

FOR SALE

4-STORY COMMERCIAL BUILDING

1100-1144 S Crocker Street | Los Angeles, CA



PROPERTY HIGHLIGHTS

- ± 58,679 SF Four-Story Commercial Building
- Located In The Fashion District
- Multi-Tenant Retail Property
- Central Business District Location
- Downtown Fashion District Synergy
- Onsite Multilevel Parking Lot
- Easy Freeway Access
- M2 Zoning Permits A Wide Range of Uses
- Walkable Area



STREET LEVEL SHOWROOMS

Matthew C. Sullivan
matthew.sullivan@lee-associates.com
213.623.0800 ext. 1
DRE License # 00848427

Sehyung Kim
skim@lee-associates.com
213.290.3599
DRE License # 01327276

All information furnished regarding property for sale, rental or financing is from sources deemed reliable, but no warranty or representation is made to the accuracy thereof and same is submitted to errors, omissions, change of price, rental or other conditions prior to sale, lease or financing or withdrawal without notice. No liability of any kind is to be imposed on the broker herein.

FOR SALE

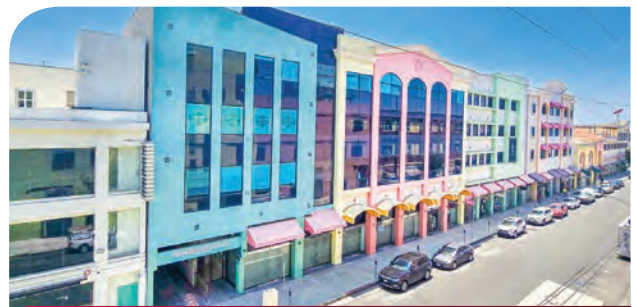
4-STORY COMMERCIAL BUILDING

1100-1144 S Crocker Street | Los Angeles, CA



PROPERTY DETAILS

SALE PRICE:	\$ 12,500,000
BLDG SF:	± 58,679 SF
PRICE/SF:	\$ 213
CAP RATE:	5.5 %
APN:	5132-010-059
YEAR BUILT:	2008
FLOORS:	Four (4)
LOT SIZE:	0.72 Acres (31,159 SF)
PARKING:	± 167 Spaces
ZONING:	M2



4-STORY BUILDING W/SIGNAGE



ONSITE PARKING

Matthew C. Sullivan
matthew.sullivan@lee-associates.com
213.623.0800 ext. 1
DRE License # 00848427

Sehyung Kim
skim@lee-associates.com
213.290.3599
DRE License # 01327276

All information furnished regarding property for sale, rental or financing is from sources deemed reliable, but no warranty or representation is made to the accuracy thereof and same is submitted to errors, omissions, change of price, rental or other conditions prior to sale, lease or financing or withdrawal without notice. No liability of any kind is to be imposed on the broker herein.