

PROPERTY INFORMATION

Property: 2758 Danley Court
Paso Robles, CA

Lease Rate: \$1.10 /SF NNN

Lease Size: ± 18,525 sq. ft.

Type: Industrial

Zoning: I (Industrial Services)

Available: 01/01/2025

APN/Parcel ID: 025-425-003

HIGHLIGHTS:

- Cutting-edge facility Includes 18,525/sf of warehouse space, including two offices and a reception space.
- Excellent 20-foot-high ceilings in the warehouse and 14, twelve foot roll up doors.
- Generous parking available on property.
- HVAC unit throughout space.
- Neighbors include JUSTIN Vineyards, San Antonio Winery, and IQMS. Close to Highways 101 and 46.

CONTACT:

ROD TRUJILLO

OWNER/BROKER

DRE #01388764

CELL: 805.703.0999

ROD@TRUJILLO-GROUP.COM

The information contained herein has been obtained from the owner of the property or from other sources deemed reliable. While we have no reason to doubt its accuracy, we do not guarantee it.

FOR LEASE

±18,525 SQ. FT.

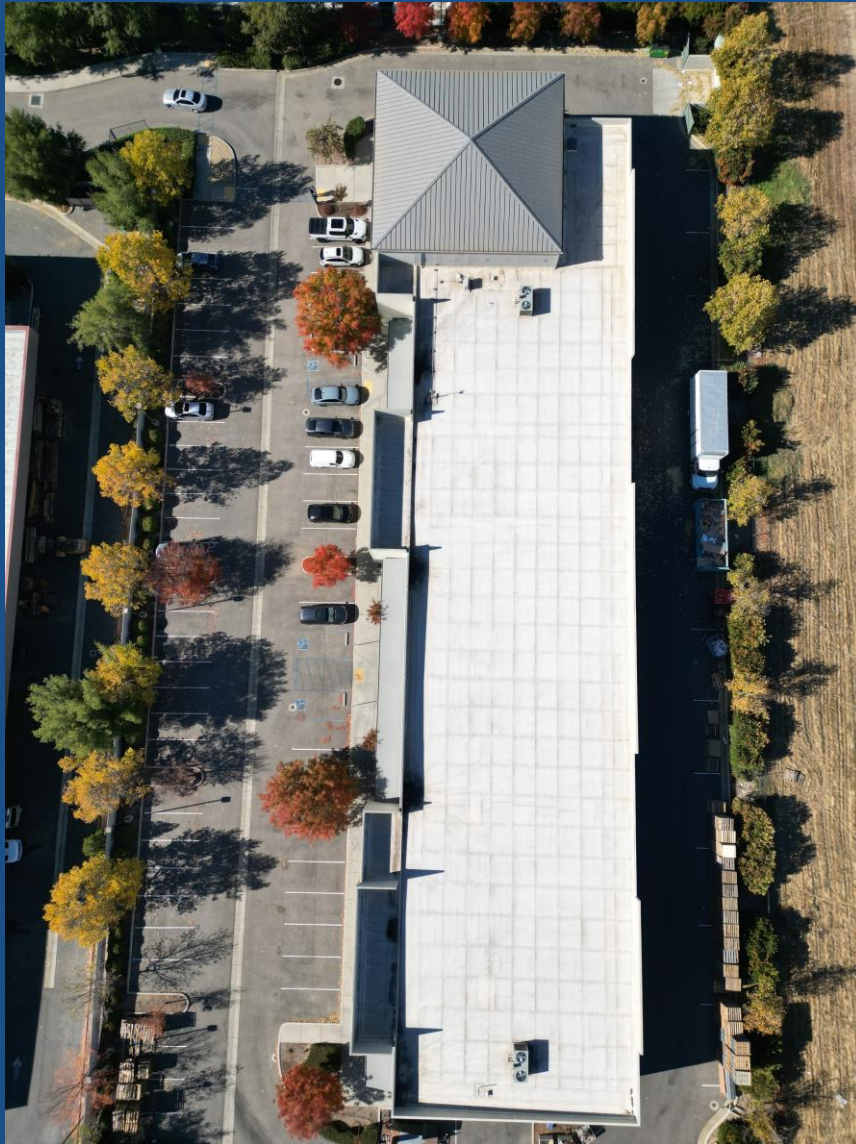
PRIME WAREHOUSE SPACE



TRUJILLO 
Commercial Real Estate
GROUP

1402 Marsh St. | San Luis Obispo, CA 93401
www.Trujillo-Group.com

PROPERTY PHOTOS



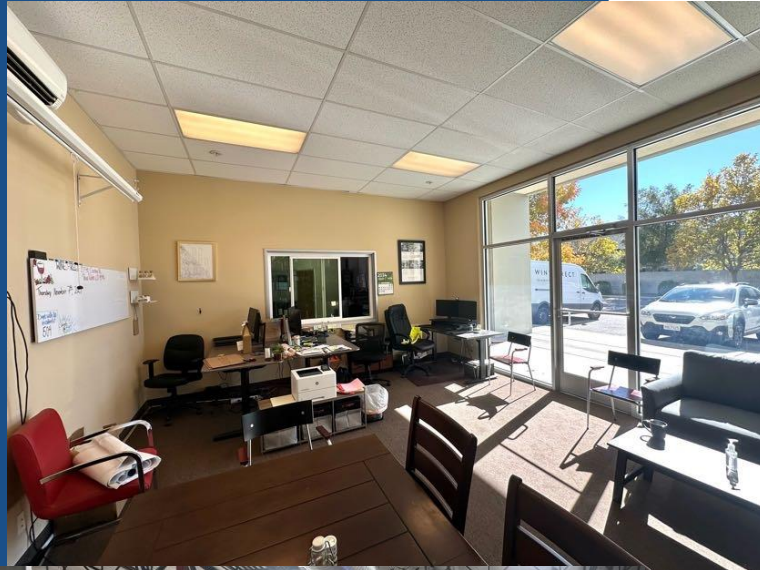
FOR LEASE
±18,525 SQ. FT.
PRIME WAREHOUSE SPACE

TRUJILLO 
Commercial Real Estate
GROUP

1402 Marsh St. | San Luis Obispo, CA 93401
www.Trujillo-Group.com

The information contained herein has been obtained from the owner of the property or from other sources deemed reliable. While we have no reason to doubt its accuracy, we do not guarantee it.

FOR LEASE
±18,525 SQ. FT.
PRIME WAREHOUSE SPACE



CONTACT:

ROD TRUJILLO

OWNER/BROKER : DRE #01388764

CELL: 805.703.0999

ROD@TRUJILLO-GROUP.COM

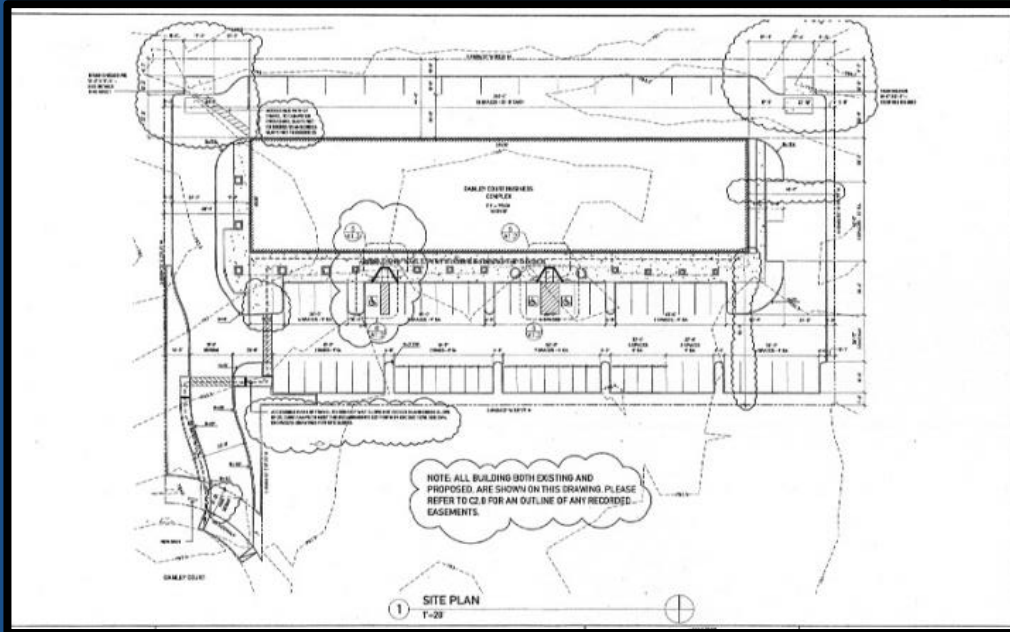
The information contained herein has been obtained from the owner of the property or from other sources deemed reliable. While we have no reason to doubt its accuracy, we do not guarantee it.

TRUJILLO 
Commercial Real Estate
GROUP

1402 Marsh St. | San Luis Obispo, CA 93401
www.Trujillo-Group.com

SITE MAP

FOR LEASE
±18,525 SQ. FT.
PRIME WAREHOUSE SPACE



CONTACT:

ROD TRUJILLO

OWNER/BROKER : DRE #01388764

CELL: 805.703.0999

ROD@TRUJILLO-GROUP.COM

TRUJILLO
Commercial Real Estate
GROUP

1402 Marsh St. | San Luis Obispo, CA 93401
www.Trujillo-Group.com