

FOR LEASE - AUTOMOTIVE (6 AUTO BAYS)

ALLY COMMERCIAL REAL ESTATE PRESENTS

 8951 Venice Blvd

Los Angeles, CA 90034

LEASE PRICE

\$UNDISCLOSED/UPON REQUEST





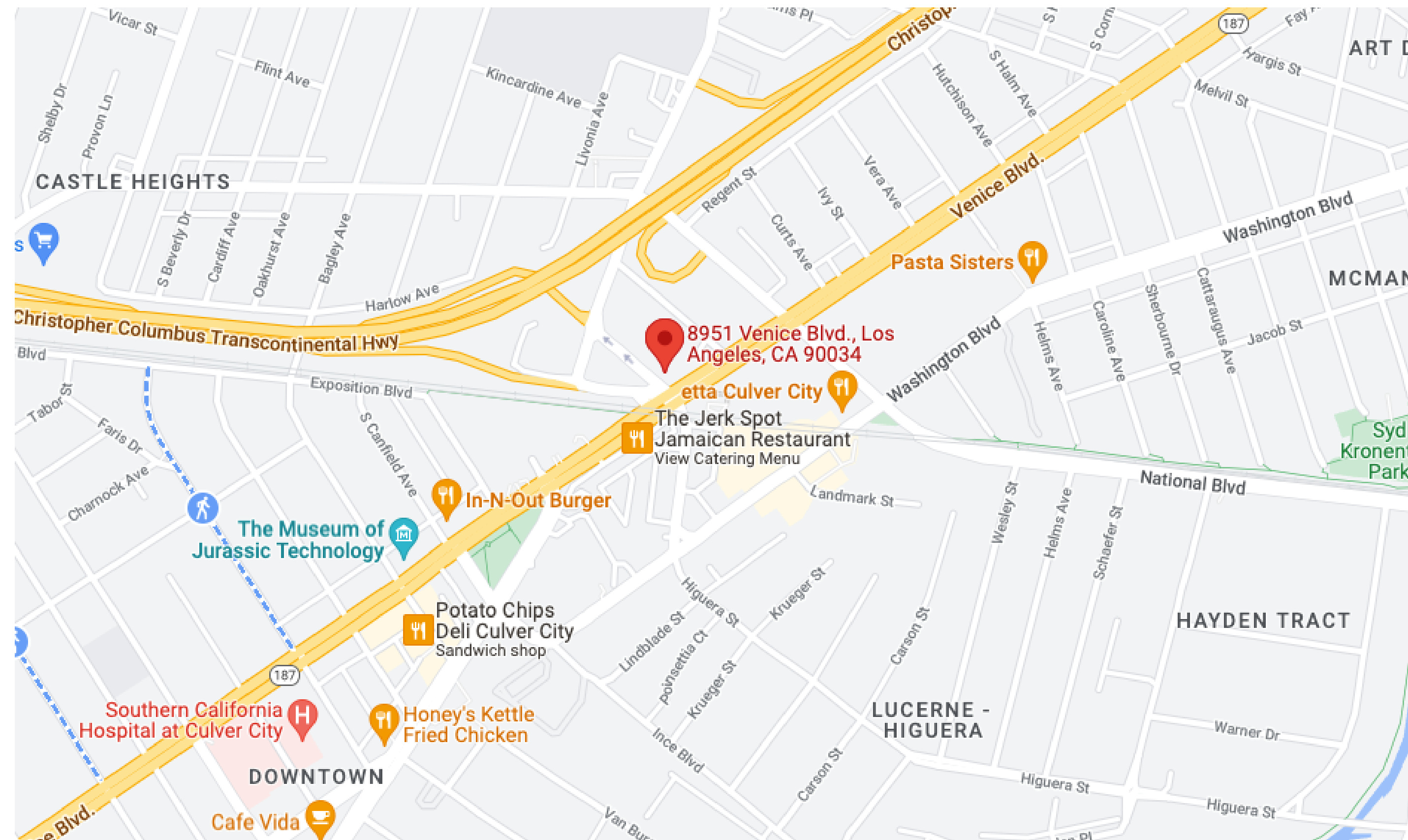
**FOR LEASE**

8951 VENICE BLVD Los Angeles, CA

**PRICE**

**\$Upon Request**

APPROXIMATE AUTO BAY SF	3,030 SF
APPROXIMATE OFFICE SF	400 SF
TOTAL APPROX. SF	3,430 SF



This information supplied herein is from sources we deem reliable. It is provided without any representation, warranty, or guarantee, expressed or implied as to its accuracy. Prospective Buyer or Tenant should conduct an independent investigation and verification of all matters deemed to be material, including, but not limited to, statements of income and expenses. Consult your attorney, accountant, or other professional advisor.



**ALLY COMMERCIAL REAL ESTATE**



**FOR LEASE**

8951 VENICE BLVD Los Angeles, CA



**Highlights**

**\$Upon Request**

- Six Auto Bay's
- Auto Lifts
- Metal bending tools, welders, metal piping materials to create exhaust pipes included
- Small Office Space
- 6 in lot parking spaces next to the auto bays included (more parking to be negotiated)

This information supplied herein is from sources we deem reliable. It is provided without any representation, warranty, or guarantee, expressed or implied as to its accuracy. Prospective Buyer or Tenant should conduct an independent investigation and verification of all matters deemed to be material, including, but not limited to, statements of income and expenses. Consult your attorney, accountant, or other professional advisor.





**FOR LEASE**

8951 VENICE BLVD Los Angeles, CA



**ADDITIONAL PHOTOS**

Eric Mandell  
424.317.0312  
Eric@allycommercialre.com  
BRE: #01904203

Jack Lawrence  
424.317.0312  
Jack@allycommercialre.com  
DRE: #02174688

This information supplied herein is from sources we deem reliable. It is provided without any representation, warranty, or guarantee, expressed or implied as to its accuracy. Prospective Buyer or Tenant should conduct an independent investigation and verification of all matters deemed to be material, including, but not limited to, statements of income and expenses. Consult your attorney, accountant, or other professional advisor.



**ALLY COMMERCIAL REAL ESTATE**



**FOR LEASE**

8951 VENICE BLVD Los Angeles, CA



This information supplied herein is from sources we deem reliable. It is provided without any representation, warranty, or guarantee, expressed or implied as to its accuracy. Prospective Buyer or Tenant should conduct an independent investigation and verification of all matters deemed to be material, including, but not limited to, statements of income and expenses. Consult your attorney, accountant, or other professional advisor.



**ALLY COMMERCIAL REAL ESTATE**



**FOR LEASE**

8951 VENICE BLVD Los Angeles, CA



**ADDITIONAL PHOTOS**

Eric Mandell  
424.317.0312  
Eric@allycommercialre.com  
BRE: #01904203

Jack Lawrence  
424.317.0312  
Jack@allycommercialre.com  
DRE: #02174688

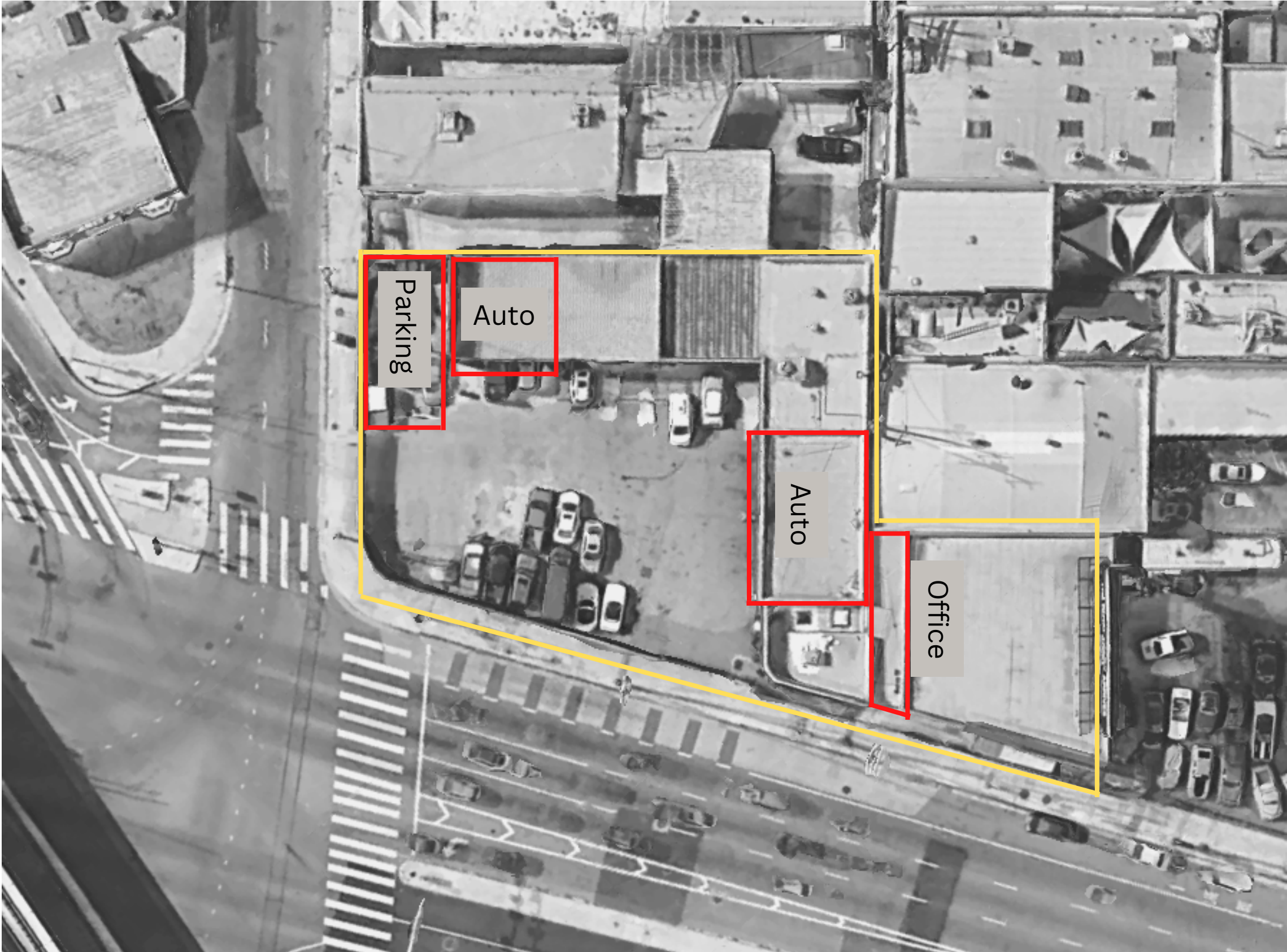
This information supplied herein is from sources we deem reliable. It is provided without any representation, warranty, or guarantee, expressed or implied as to its accuracy. Prospective Buyer or Tenant should conduct an independent investigation and verification of all matters deemed to be material, including, but not limited to, statements of income and expenses. Consult your attorney, accountant, or other professional advisor.





**FOR LEASE**

8951 VENICE BLVD Los Angeles, CA



**AVAILABILITY LAYOUT**

- Auto Bay (x6)
  - 6 Built Out Auto Bay's
- Office Space
  - Included
- Parking Spaces
  - 6+ Spaces

This information supplied herein is from sources we deem reliable. It is provided without any representation, warranty, or guarantee, expressed or implied as to its accuracy. Prospective Buyer or Tenant should conduct an independent investigation and verification of all matters deemed to be material, including, but not limited to, statements of income and expenses. Consult your attorney, accountant, or other professional advisor.





**FOR LEASE**

8951 VENICE BLVD Los Angeles, CA



**AVAILABILITY LAYOUT**

- Auto Bay (x6)
  - \$4,000 NNN / Bay
- Office Space
  - Included
- Parking Spaces
  - 6+ Spaces

This information supplied herein is from sources we deem reliable. It is provided without any representation, warranty, or guarantee, expressed or implied as to its accuracy. Prospective Buyer or Tenant should conduct an independent investigation and verification of all matters deemed to be material, including, but not limited to, statements of income and expenses. Consult your attorney, accountant, or other professional advisor.





# MEET THE TEAM

ALLY COMMERCIAL REAL ESTATE



ERIC MANDELL

President

CA BRE: 01904203

424.317.0312

Eric@allycommercialre.com



JACK LAWRENCE

Industrial Associate

CA DRE: 02174688

424.317.0312

Jack@allycommercialre.com



8951 Venice Blvd | ALLY COMMERCIAL REAL ESTATE | OFFERING MEMORANDUM

This information supplied herein is from sources we deem reliable. It is provided without any representation, warranty, or guarantee, expressed or implied as to its accuracy. Prospective Buyer or Tenant should conduct an independent investigation and verification of all matters deemed to be material, including, but not limited to, statements of income and expenses. Consult your attorney, accountant, or other professional advisor.



# CONTACT US

---

## MAILING ADDRESS

1951 Westwood Blvd. Suite A  
Los Angeles, CA 90025

## EMAIL ADDRESS

[info@allycommericalre.com](mailto:info@allycommericalre.com)

## PHONE NUMBER

424.317.0312

