



Sale Price:

\$620,000

CONTACT

Mary Winter Teaster

Senior Brokerage Associate
+1 803 401 4308
mary.teaster@colliers.com

Sydney Lanham

Brokerage Associate
+1 803 401 4284
sydney.lanham@colliers.com

Colliers | South Carolina

1301 Gervais Street, Ste 600
Columbia, SC 29201
+1 803 254 2300

FOR SALE

±2,932 SF Office Building Located
in Woodcreek Farms Development

1713 Woodcreek Farms Road | Elgin, SC 29045

Highlights

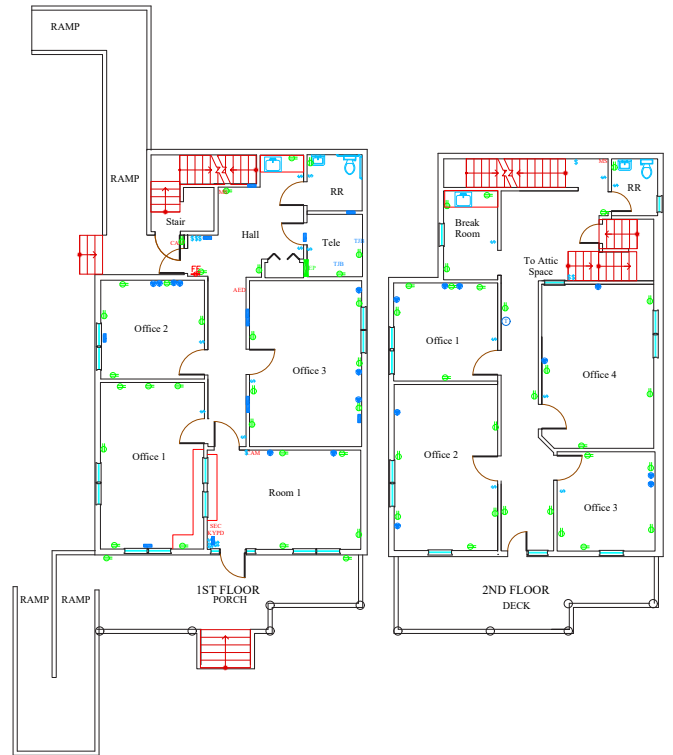
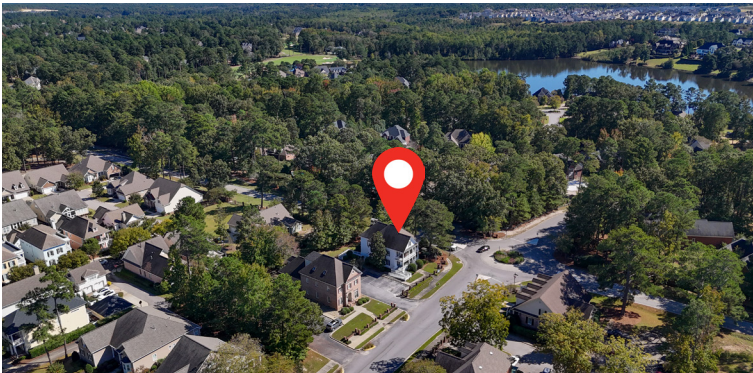
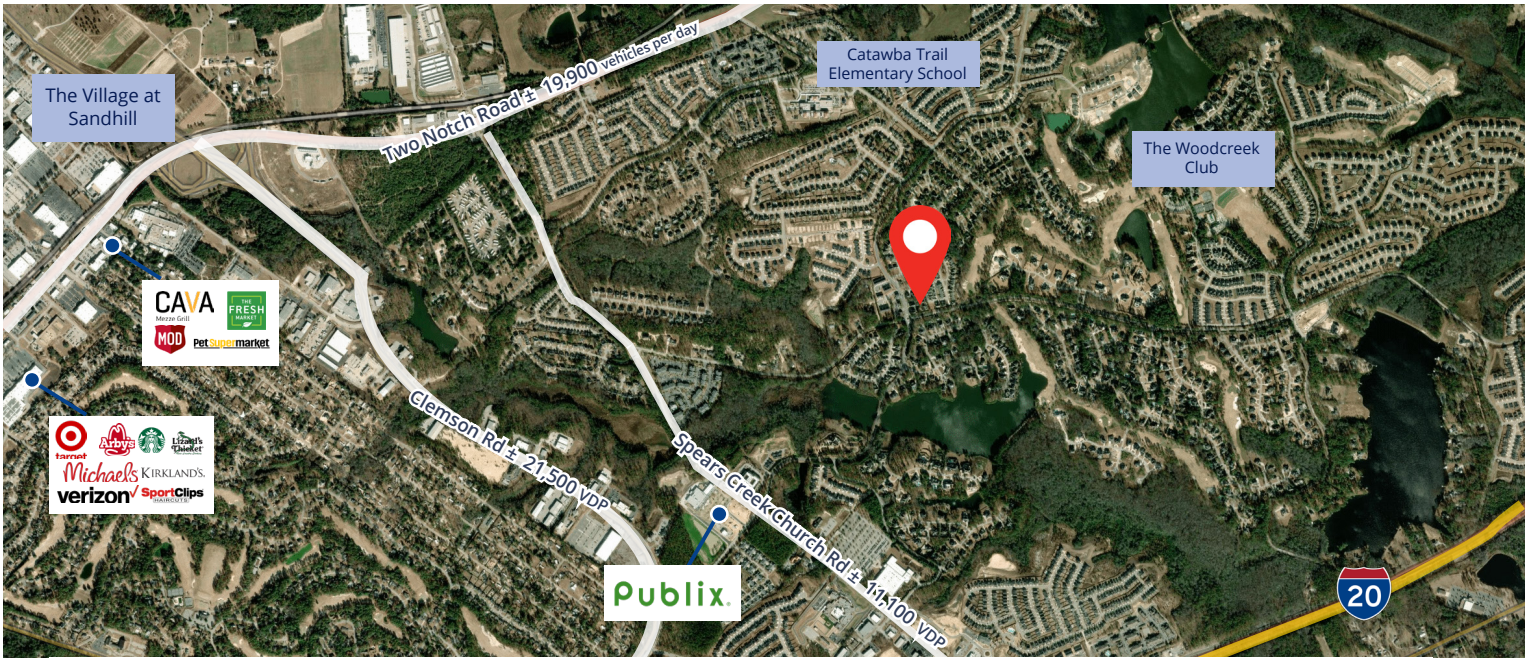
- ±2,932 SF building
- Efficient 7 office layout with restrooms on both floors, break room and reception area
- Parking on site
- Two story building, no elevator
- First floor is ADA accessible with ramp access

1713 Woodcreek Farms Road is conveniently located in the Woodcreek Farms development in Elgin, South Carolina. This office property offers excellent accessibility. It is surrounded by residential, retail and professional spaces, and just minutes from I-20.

Copyright © 2026 Colliers International. Information herein has been obtained from sources deemed reliable, however its accuracy cannot be guaranteed. The user is required to conduct their own due diligence and verification.

FOR SALE

Demographics 2025 est.	1 mile	3 miles	5 miles
Total Population	4,905	25,728	74,267
Number of Households	1,922	10,502	29,809
Avg. HH Income	\$148,310	\$120,200	\$112,914



CONTACT

Mary Winter Teaster
 Senior Brokerage Associate
 +1 803 401 4308
 mary.teaster@colliers.com

Sydney Lanham
 Brokerage Associate
 +1 803 401 4284
 sydney.lanham@colliers.com

