



4.5 Acres Commercial Development Opportunity

Google Earth

PURCHASE PRICE:

\$3,950,000.00

Land Size: 4.50 Acres

Property Size: 155,520 Sq. Ft.

4.5 Acres of Land Zoned C2, General Commercial in the City of Lake Elsinore in close proximity to the Interstate 15 Freeway and located as part of a 10 Acre Commercially zoned property in close proximity to high-density residential development. The property is located on the North East corner of Lake Street and Running Deer Road.

There is a planned commercial development in the process of final entitlement on approximately 6 acres to the South of this property at the northwest corner of Mountain Street and Lake Street. The commercial project consists of an approximately 32,000 retail center including a fuel station, and in-line retail buildings.

Allows for the uses identified in C0, C1, and the C2 General Commercial District.

COMMERCIAL DEVELOPMENT OPPORTUNITY

Contact:
TED CALIGIURI
Director
760-533-5343

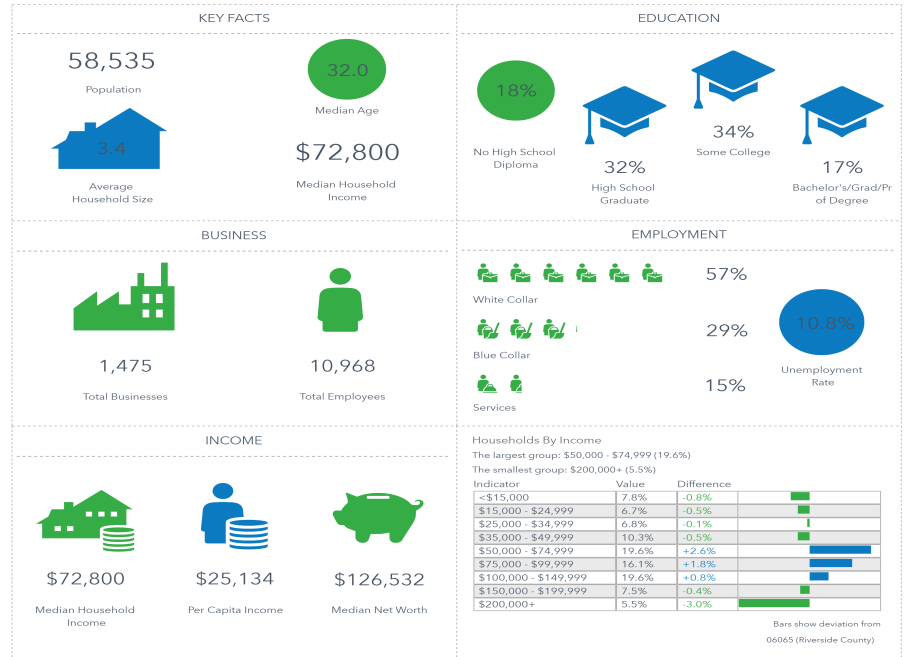
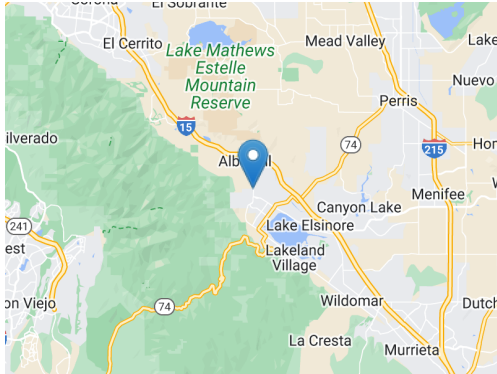
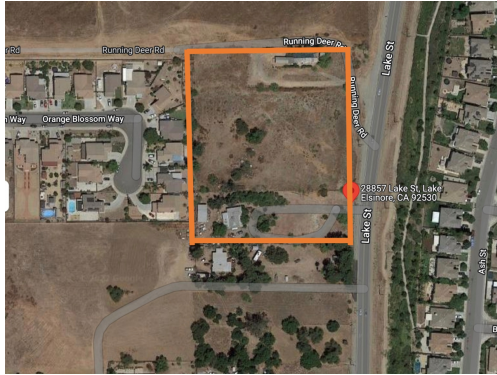
28857 Lake St.
Lake Elsinore, CA 92530

tedcaligiuri@gmail.com

PROPERTY FOR SALE



21 | COMMERCIAL



This infographic contains data provided by Esri, Esri and Data Axle. The vintage of the data is 2021, 2026.

© 2021 Esri

Contact:
TED CALIGIURI
Director
760-533-5343