

# SOUTHWEST MEDICAL PLAZA I

7100 Oakmont Blvd.  
Fort Worth, TX 76132

Healthpeak® | **DOC**  
LISTED  
NYSE



Leasing Information:  
214.461.2383

# Lincoln

<b>Banks Newton</b>	<b>Douglas Maclay</b>	<b>Elizabeth Madden</b>
214.461.2388	214.461.2371	214.461.2366
<a href="mailto:bnewton@lpc.com">bnewton@lpc.com</a>	<a href="mailto:dmaclay@lpc.com">dmaclay@lpc.com</a>	<a href="mailto:emadden@lpc.com">emadden@lpc.com</a>

8140 Walnut Hill Lane  
Suite 700  
Dallas, TX 75231

[www.lpc.com](http://www.lpc.com)

# SOUTHWEST MEDICAL PLAZA I

7100 Oakmont Blvd. | Fort Worth, TX 76132

## Outpatient Medical For Lease

1,578 - 1,752 SF



### Property Overview

This off-campus Outpatient Medical Building is ideally positioned along the Chisholm Trail growth corridor. Residing minutes away from Texas Health Harris Methodist Southwest Hospital, TCU, and the Fort Worth Medical District, Southwest Medical Plaza I offers convenience for patients and staff.

### Property Highlights

- Immediate access to the Chisholm Trail tollway and southwest Fort Worth growth corridor
- Convenient access to Texas Health Harris Methodist Southwest Hospital, Fort Worth Medical District, and TCU
- No Use Restrictions
- Free Parking for Patients & Staff
- Adjacent to Baylor Scott & White Surgicare

### Availabilities

Suite 202	1,578 SF
Suite 204	1,752 SF

**Banks Newton**    **Douglas Maclay**    **Elizabeth Madden**

214.461.2388  
bnewton@lpc.com

214.461.2371  
dmaclay@lpc.com

214.461.2366  
emadden@lpc.com

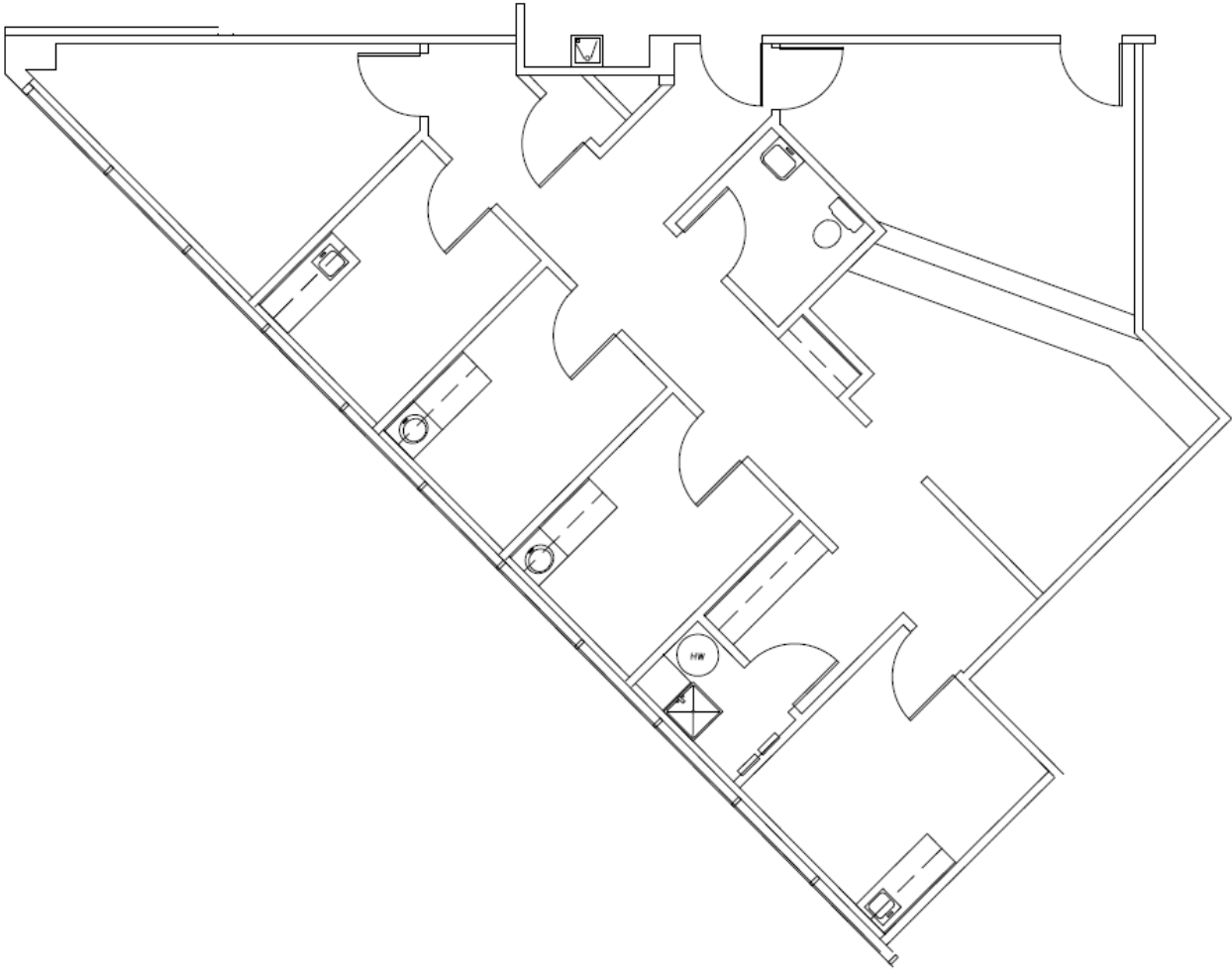
# Lincoln

# SOUTHWEST MEDICAL PLAZA I

7100 Oakmont Blvd. | Fort Worth, TX 76132

Suite 202

1,578 SF



Suite	Size
Suite 202	1,578 SF

**Banks Newton**    **Douglas Maclay**    **Elizabeth Madden**  
214.461.2388    214.461.2371    214.461.2366  
bnewton@lpc.com    dmaclay@lpc.com    emadden@lpc.com

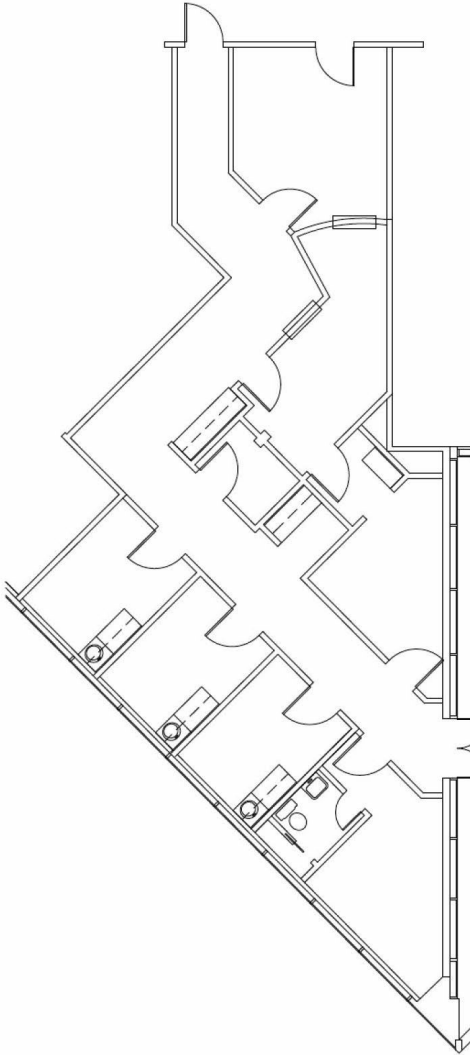
**Lincoln**

# SOUTHWEST MEDICAL PLAZA I

7100 Oakmont Blvd. | Fort Worth, TX 76132

Suite 204

1,752 SF



Suite	Size
Suite 204	1,752 SF

**Banks Newton**  
214.461.2388  
bnewton@lpc.com

**Douglas Maclay**  
214.461.2371  
dmaclay@lpc.com

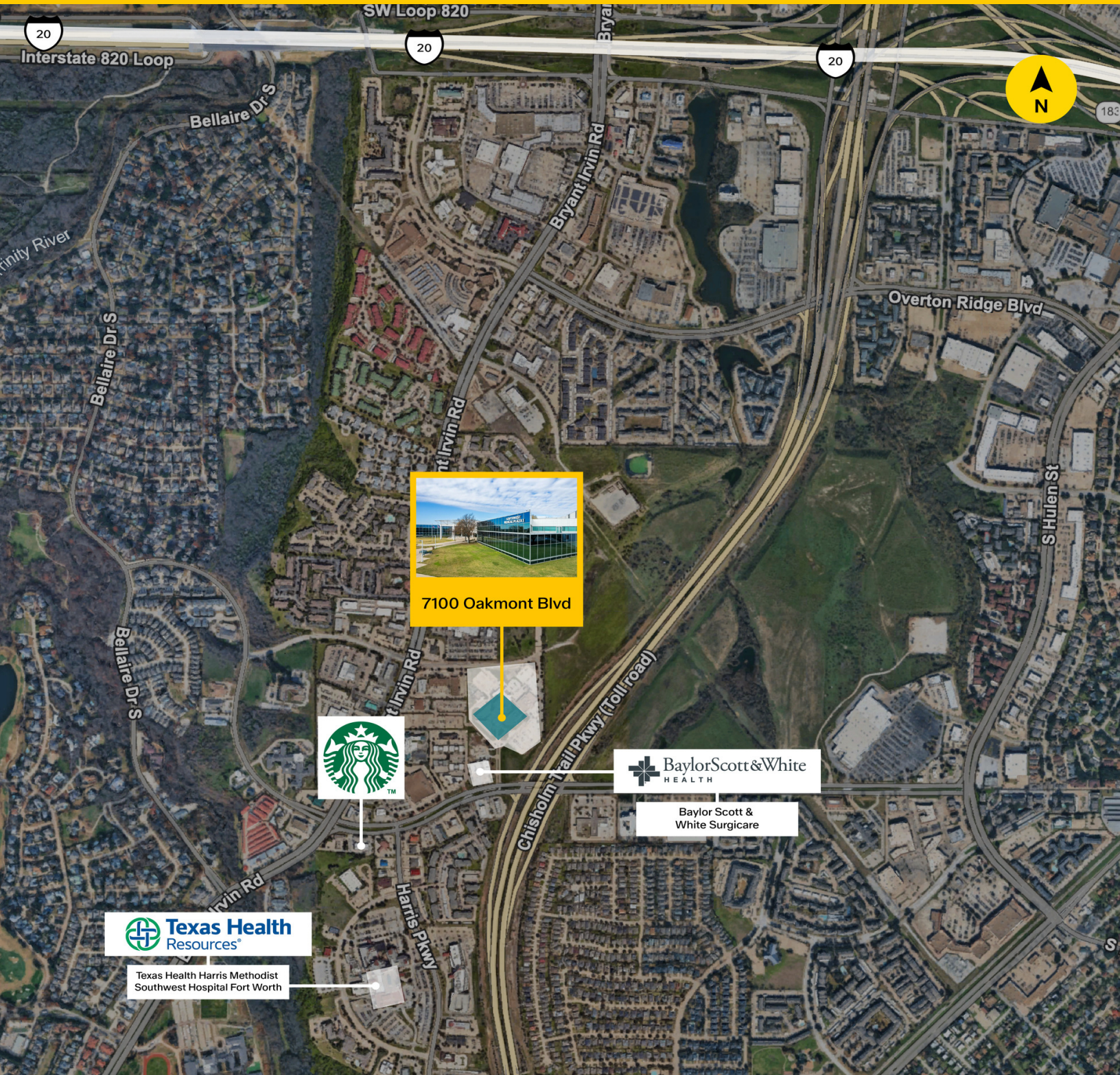
**Elizabeth Madden**  
214.461.2366  
emadden@lpc.com

**Lincoln**

# SOUTHWEST MEDICAL PLAZA I

## Nearby Amenities

7100 Oakmont Blvd. | Fort Worth, TX 76132



**Banks Newton**

214.461.2388  
bnewton@lpc.com

**Douglas Maclay**

214.461.2371  
dmaclay@lpc.com

**Elizabeth Madden**

214.461.2366  
emadden@lpc.com

# Lincoln



# SOUTHWEST MEDICAL PLAZA I

7100 Oakmont Blvd.  
Fort Worth, TX 76132

Leasing Information:  
214.461.2383

**Banks Newton**  
214.461.2388  
bnewton@lpc.com

**Douglas Maclay**  
214.461.2371  
dmaclay@lpc.com

**Elizabeth Madden**  
214.461.2366  
emadden@lpc.com

8140 Walnut Hill Lane  
Suite 700  
Dallas, TX 75231

[www.lpc.com](http://www.lpc.com)

Healthpeak® | **DOC**  
LISTE  
NYSE

# Lincoln