

EAST HENNEPIN AVE

LAND FOR SALE / INDUSTRIAL BUILD TO SUIT

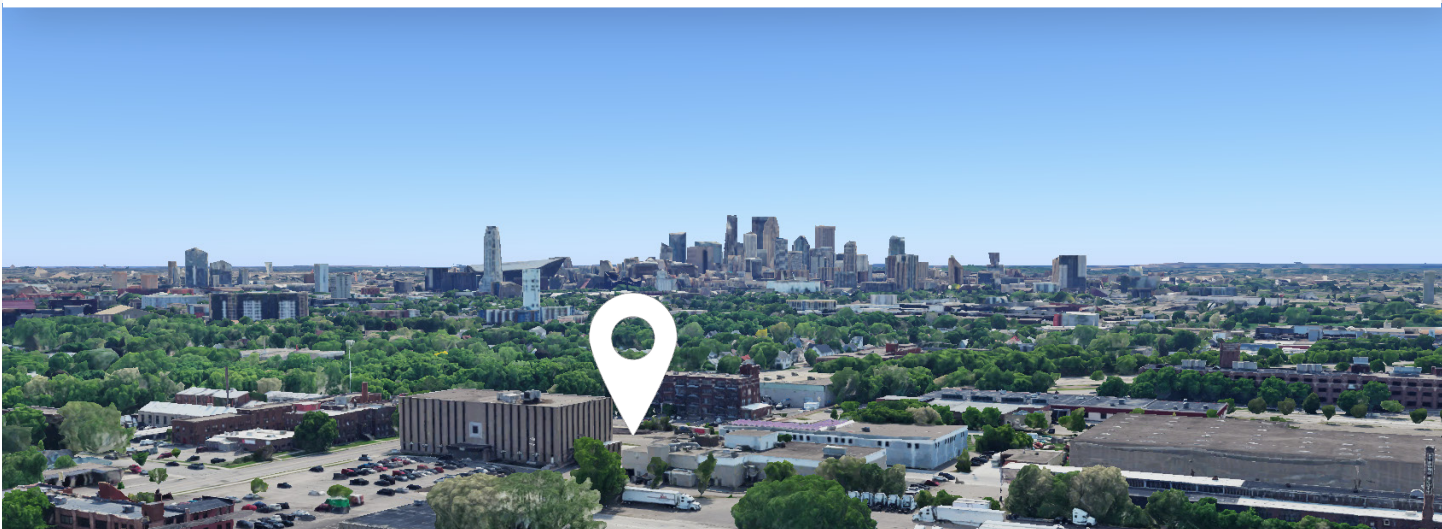
1909-1917 East Hennepin Avenue | Minneapolis, MN 55413

DETAILS

AVAILABLE	.75 acres/24,500 SF
SALE PRICE	\$657,000
ZONING	BFPR/Production Built Form Overlay District PR2 / Production and Processing District
LOT DIMENSIONS	133' wide by 245' deep
BUILD TO SUIT	7,895 RSF Building Ample Parking Lot

AMENITIES

- Currently in use as an overflow parking lot by Hennepin Square office building (located just across Taft St NE from land parcel)
- Located in the Heart of the Twin Cities, between Minneapolis and Saint Paul, with close proximity to both downtowns
- Easy access to the metro area via I-35, I-94, MN 36 and MN 280
- Short distance to independent art, dining, specialty coffee shops, micro-breweries and distilleries, and entertainment
- Close proximity to the Quarry Retail District, including Target, Cub Foods, Home Depot, PetSmart and more
- METRO Transit bus stop on East Hennepin



Local Knowledge

Allows us to uncover unique opportunities for our clients in Minneapolis | St. Paul.



Independent Advantage

We provide personalized service and take the time to fully invest in our clients.



Full-Service

From start to finish: we're directly involved every step of the way.

CONTACT US

Nils Snyder
612.240.7967

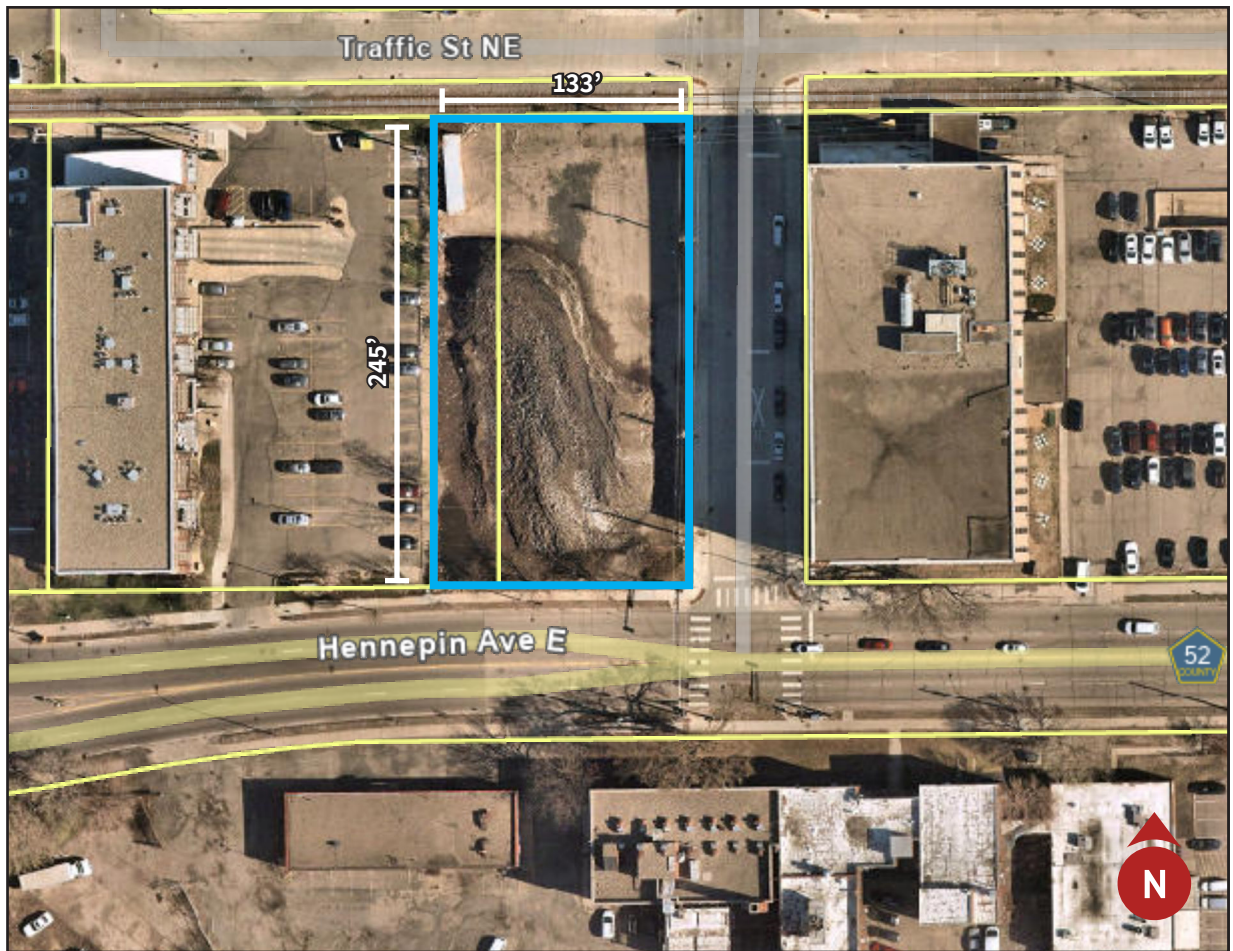
nsnyder@kenwoodcommercial.com

Mike Doyle
612.242.8820

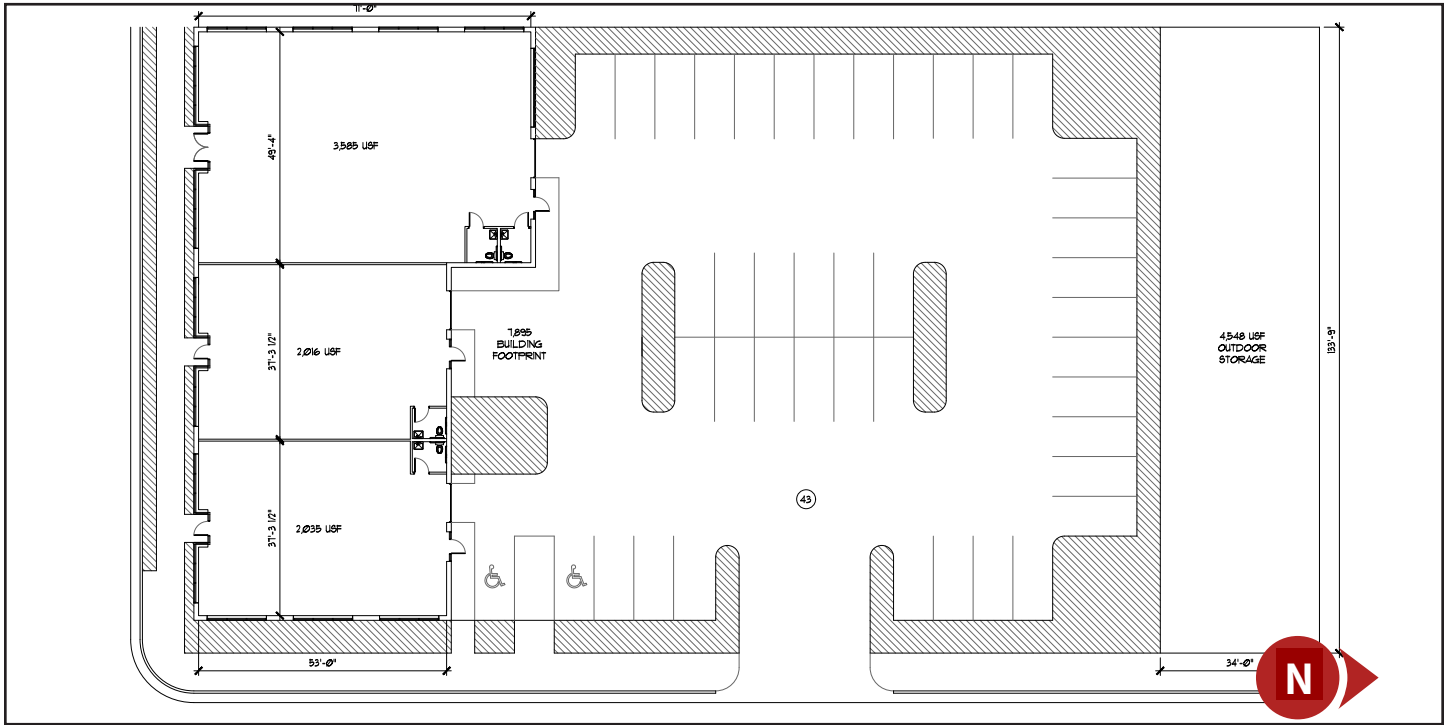
mdoyle@kenwoodcommercial.com

SITE PLAN

.75 acres, 32,856 SF



BUILD TO SUIT SITE PLAN



BUILD TO SUIT RENDERINGS



BUILD TO SUIT RENDERINGS

