

# SULLY PLACE SHOPPING CENTER

13884 Metrotech Drive, Chantilly, VA 20151  
Fairfax County



Now Open



METROTECH DR (5,798 ADT)

LEE JACKSON MEMORIAL HWY (64,032 ADT)

SULLY PLACE

## RETAIL FOR LEASE

JOIN:



- 500,000 SF Power Center located along Route 50 (Lee Jackson Memorial Hwy).
- Join At Home, Lowe's, Petsmart, Lotte and many more.
- Traffic light controlled access to both heavily trafficked Route 50 and Centreville Road.

**Dimitri Georgelakos**  
dimitri@klnb.com  
703-268-2710

**Veronica Kamara**  
vkamara@klnb.com  
703-268-2714

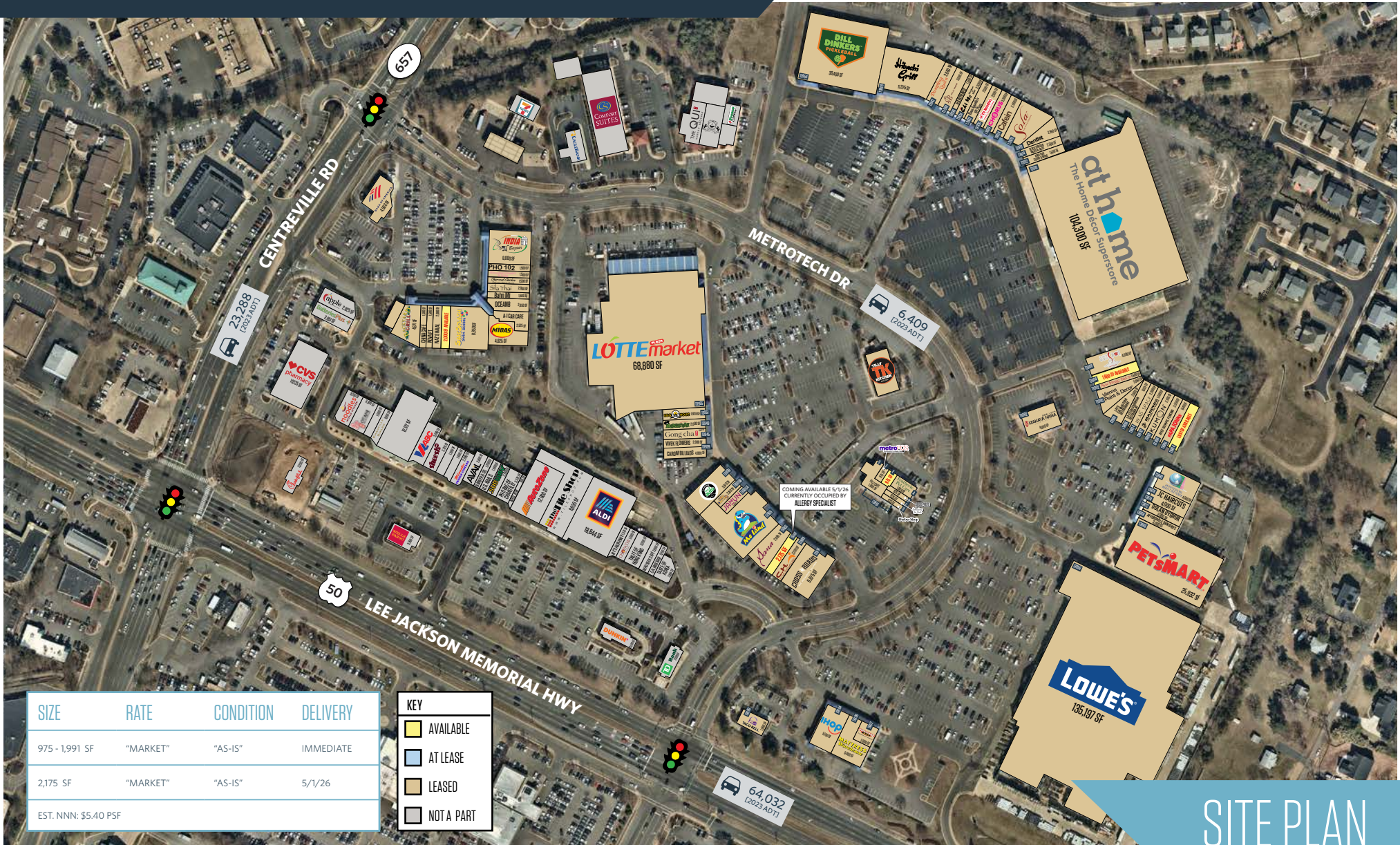
**Billy Kelly**  
bkelly@klnb.com  
703-268-2706

8065 Leesburg Pike, Suite 700  
Tysons, VA 22182  
klnb.com



# SULLY PLACE SHOPPING CENTER

13884 Metrotech Drive, Chantilly, VA 20151  
Fairfax County



SIZE	RATE	CONDITION	DELIVERY
975 - 1,991 SF	"MARKET"	"AS-IS"	IMMEDIATE
2,175 SF	"MARKET"	"AS-IS"	5/1/26
EST. NNN: \$5.40 PSF			

KEY
<span style="display: inline-block; width: 10px; height: 10px; background-color: yellow; border: 1px solid black;"></span> AVAILABLE
<span style="display: inline-block; width: 10px; height: 10px; background-color: lightblue; border: 1px solid black;"></span> AT LEASE
<span style="display: inline-block; width: 10px; height: 10px; background-color: brown; border: 1px solid black;"></span> LEASED
<span style="display: inline-block; width: 10px; height: 10px; background-color: grey; border: 1px solid black;"></span> NOT A PART

SITE PLAN

**Dimitri Georgelakos**  
dimitri@klnb.com  
703-268-2710

**Veronica Kamara**  
vkamara@klnb.com  
703-268-2714

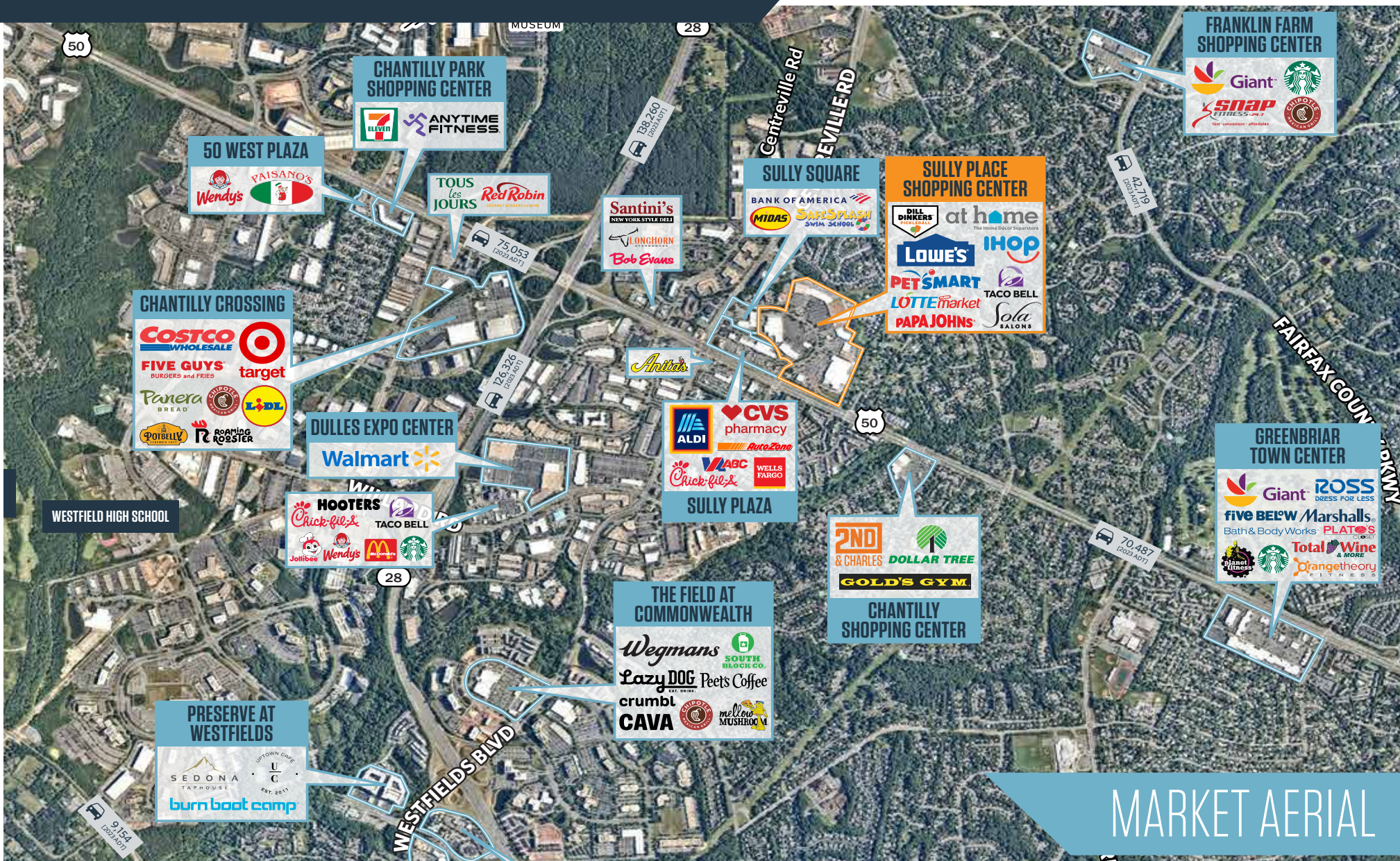
**Billy Kelly**  
bkelly@klnb.com  
703-268-2706

8065 Leesburg Pike, Suite 700  
Tysons, VA 22182  
klnb.com

**klnb**

# SULLY PLACE SHOPPING CENTER

13884 Metrotech Drive, Chantilly, VA 20151  
Fairfax County



MARKET AERIAL

**Dimitri Georgelakos**  
dimitri@klnb.com  
703-268-2710

**Veronica Kamara**  
vkamara@klnb.com  
703-268-2714

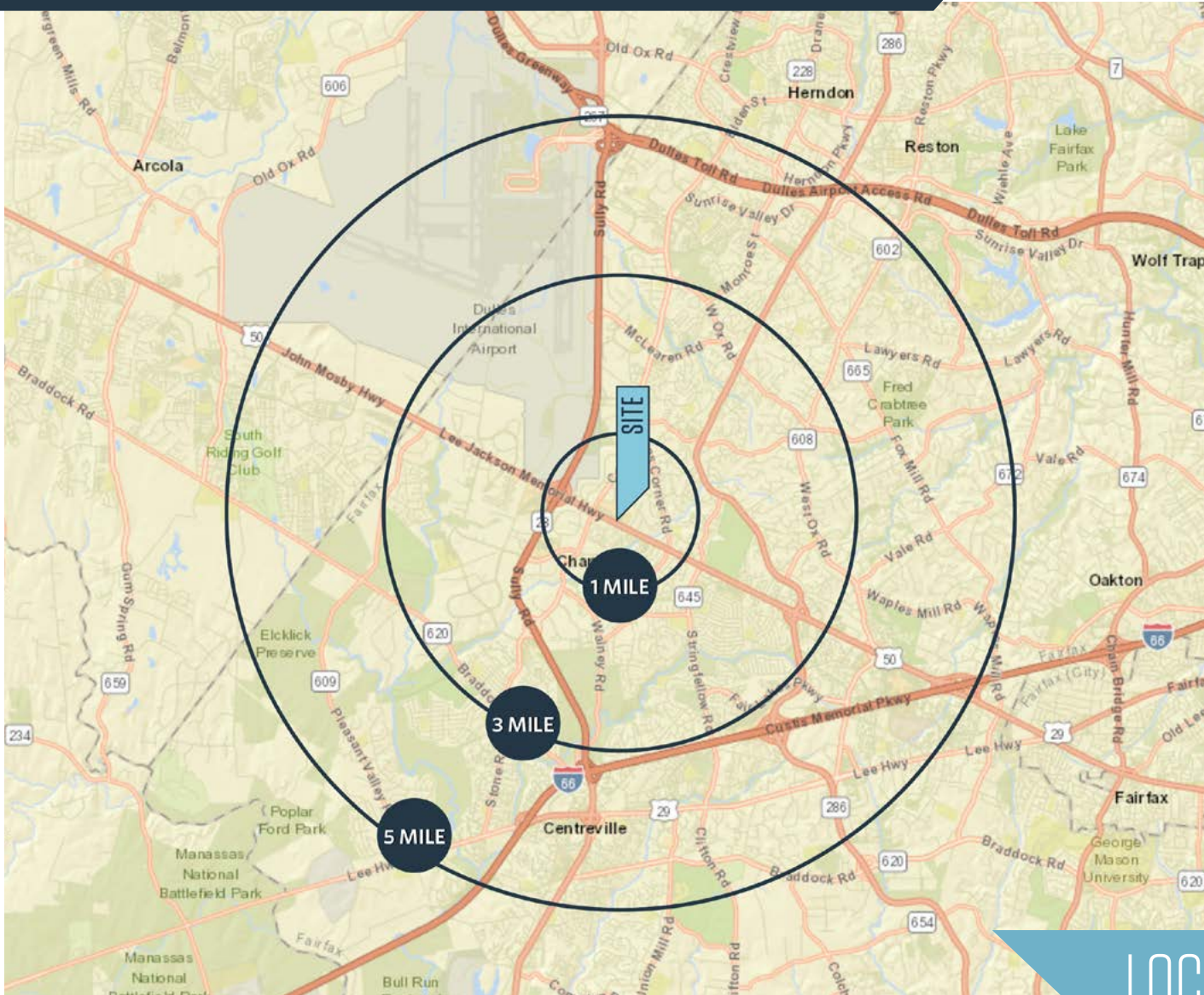
**Billy Kelly**  
bkelly@klnb.com  
703-268-2706

8065 Leesburg Pike, Suite 700  
Tysons, VA 22182  
klnb.com



# SULLY PLACE SHOPPING CENTER

13884 Metrotech Drive, Chantilly, VA 20151  
Fairfax County



## DEMOGRAPHICS | 2024:

	1-MILE	3-MILE	5-MILE
Population	14,791	80,513	254,427
Daytime Population	12,829	55,789	142,385
Households	4,729	26,877	91,773
Average HH Income	\$171,487	\$212,257	\$185,787

[CLICK TO DOWNLOAD DEMOGRAPHIC REPORT](#)

## TRAFFIC COUNTS | 2023:

Lee Jackson Memorial Hwy (Rt 50)	64,032 ADT
Centreville Road	23,288 ADT

## LOCATION & DEMOGRAPHICS

**Dimitri Georgelakos**  
dimitri@klnb.com  
703-268-2710

**Veronica Kamara**  
vkamara@klnb.com  
703-268-2714

**Billy Kelly**  
bkelly@klnb.com  
703-268-2706

8065 Leesburg Pike, Suite 700  
Tysons, VA 22182  
[klnb.com](http://klnb.com)



# SULLY PLACE SHOPPING CENTER

13884 Metrotech Drive, Chantilly, VA 20151  
Fairfax County

[CLICK TO VIEW PROPERTY WEBSITE](#)

For More Information, Please Contact:

**Dimitri Georgelakos**

dimitri@klnb.com

703-268-2710

**Veronica Kamara**

vkamara@klnb.com

703-268-2714

**Billy Kelly**

bkelly@klnb.com

703-268-2706

8065 Leesburg Pike, Suite 700  
Tysons, VA 22182

[klnb.com](http://klnb.com)



[instagram.com/klnbcre](https://www.instagram.com/klnbcre)



[linkedin.com/company/klnb](https://www.linkedin.com/company/klnb)



[facebook.com/KLNBCRE](https://www.facebook.com/KLNBCRE)

While we have no reason to doubt the accuracy of any of the information supplied, we cannot, and do not, guarantee its accuracy. All information should be independently verified prior to a purchase or lease of the property. We are not responsible for errors, omissions, misuse, or misinterpretation of information contained herein and make no warranty of any kind, express or implied, with respect to the property or any other matters.

**klnb**