



OFFICE/FLEX

1542 TAURUS COURT | LOVELAND, CO



AVAILABLE FOR SALE
IN PRIME LOVELAND LOCATION

4,778 SF Office/Flex available for sale.

This two-story building is ideally located in the heart of Loveland's Koldeway Industrial Park. Just one block west of N. Boise Ave. and a quarter mile from E. Eisenhower Blvd., this property offers unmatched accessibility and visibility in a highly desirable commercial corridor.



CBRE

Property Details



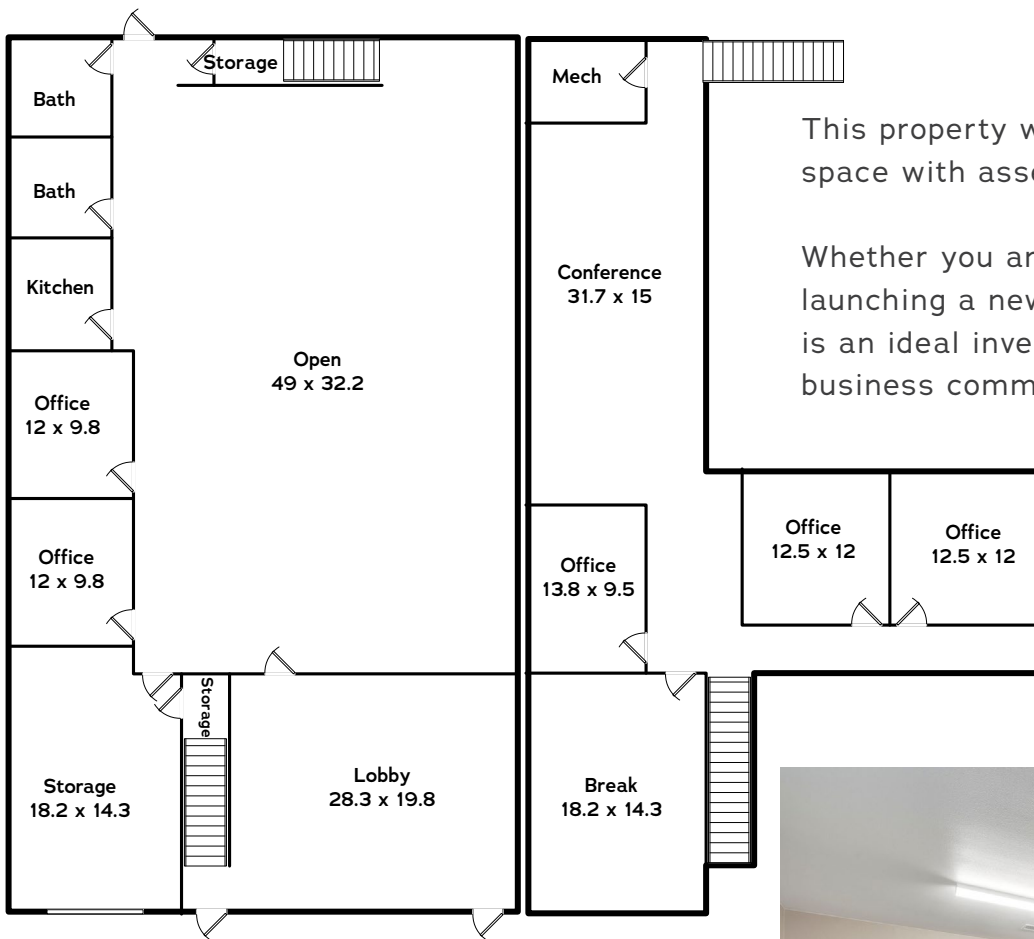
SALE PRICE	\$1,150,000
BUILDING SIZE	4,778 SF
CEILING HEIGHT	25'
GARAGE	9' Clearance
PARKING	5
ASSOCIATION DUES	\$500/Month



With a flexible layout designed to accommodate a wide range of building operations, this versatile commercial building offers 5 private offices, a welcoming lobby, a spacious open area, a mezzanine-level conference room, kitchen facilities, breakroom, two restrooms, a garage, and ample storage area.

Call Listing Broker to schedule a walk-through.

Property Details



This property was designed as a mixed use space with assembly, office and storage usage.

Whether you are expanding, relocating, or launching a new venture, this adaptable space is an ideal investment in Loveland's growing business community.

HIGHLIGHTS

- Flexible/Versatile
- High-End Finishes
- Creative Space



Property Details



DRIVE TIMES FROM LOCATION	
to I-25	4 miles
to Fort Collins	13.2 miles
to Greeley	19 miles
to Longmnt	21.5 miles
to Denver	50.9 miles
to DIA	53.9 miles



CONTACT

MIKE EYER

First Vice President
+1 970 372 3844
mike.eyer@cbre.com

MATT SHOUP

Broker Associate
+1 970 217 6060
matt@mattshoup.com

CBRE

