

AVAILABLE FOR LEASE
Lease Rate: \$1.25-\$1.65/SF NNN
(2025 estimated CAMs are \$0.80 PSF)

PECOS RUSSELL PLAZA



CAN PROVIDE T.I. ALLOWANCE AND GENEROUS LEASE INCENTIVES*

Property Description

High profile Retail Plaza on the SW corner of Pecos and Russell! Just minutes to McCarran Airport, The Las Vegas Strip and everything Las Vegas has to offer. Heavy Traffic counts! Heavy Foot traffic!

Property Features

- **FREE RENT FOR TERMS OF THREE (3) YEARS OR LONGER***
- Aggressive Ownership, Bring All Offers
- Recently Renovated Center - New Pylon, Paint, Parking Lot and Landscape
- 46,000 Average Daytime Traffic Counts
- Adjacent to Top Producing ARCO Gas Station

* Conditions apply

FOR MORE INFORMATION CONTACT:

GERI JAMESON | NV Lic # S.0190514

o: 702.787.0123 | c: 702.907.0767 | leasing@virtusco.com

2490 Paseo Verde Pkwy, Ste 115, Henderson, NV 89074 | 702.787.0123 ph | 702.463.0123 fax

This statement with the information it contains is given with the understanding that all negotiations relating to the purchase, renting or leasing of the property described above shall be conducted through this office. The above information while not guaranteed has been secured from sources we believe to be reliable.

virtus
commercial

www.virtusco.com

AVAILABLE FOR LEASE

Lease Rate: \$1.25-\$1.65/SF NNN

(2025 estimated CAMs are \$0.80 PSF)

PECOS RUSSELL PLAZA

HIGH PROFILE RETAIL PLAZA • 3380 EAST RUSSELL ROAD | LAS VEGAS, NV 89120



Russell Road - 17,000 cars/day

Pecos Road - 23,500 cars/day

FOR MORE INFORMATION CONTACT:

Site Plan is not to exact scale. It is intended for general information purposes only.

GERI JAMESON | NV Lic # S.0190514

o: 702.787.0123 | c: 702.907.0767 | leasing@virtusco.com

2490 Paseo Verde Pkwy, Ste 115, Henderson, NV 89074 | 702.787.0123 ph | 702.463.0123 fax

This statement with the information it contains is given with the understanding that all negotiations relating to the purchase, renting or leasing of the property described above shall be conducted through this office. The above information while not guaranteed has been secured from sources we believe to be reliable.



www.virtusco.com

AVAILABLE FOR LEASE
Lease Rate: \$1.25-\$1.65/SF NNN
(2025 estimated CAMs are \$0.80 PSF)

PECOS RUSSELL PLAZA

HIGH PROFILE RETAIL PLAZA • 3380 EAST RUSSELL ROAD | LAS VEGAS, NV 89120

SUITE 103 - 1,000 SF - \$1.25/SF



FOR MORE INFORMATION CONTACT:

GERI JAMESON | NV Lic # S.0190514

o: 702.787.0123 | c: 702.907.0767 | leasing@virtusco.com

2490 Paseo Verde Pkwy, Ste 115, Henderson, NV 89074 | 702.787.0123 ph | 702.463.0123 fax

This statement with the information it contains is given with the understanding that all negotiations relating to the purchase, renting or leasing of the property described above shall be conducted through this office. The above information while not guaranteed has been secured from sources we believe to be reliable.

virtus
commercial

www.virtusco.com

AVAILABLE FOR LEASE

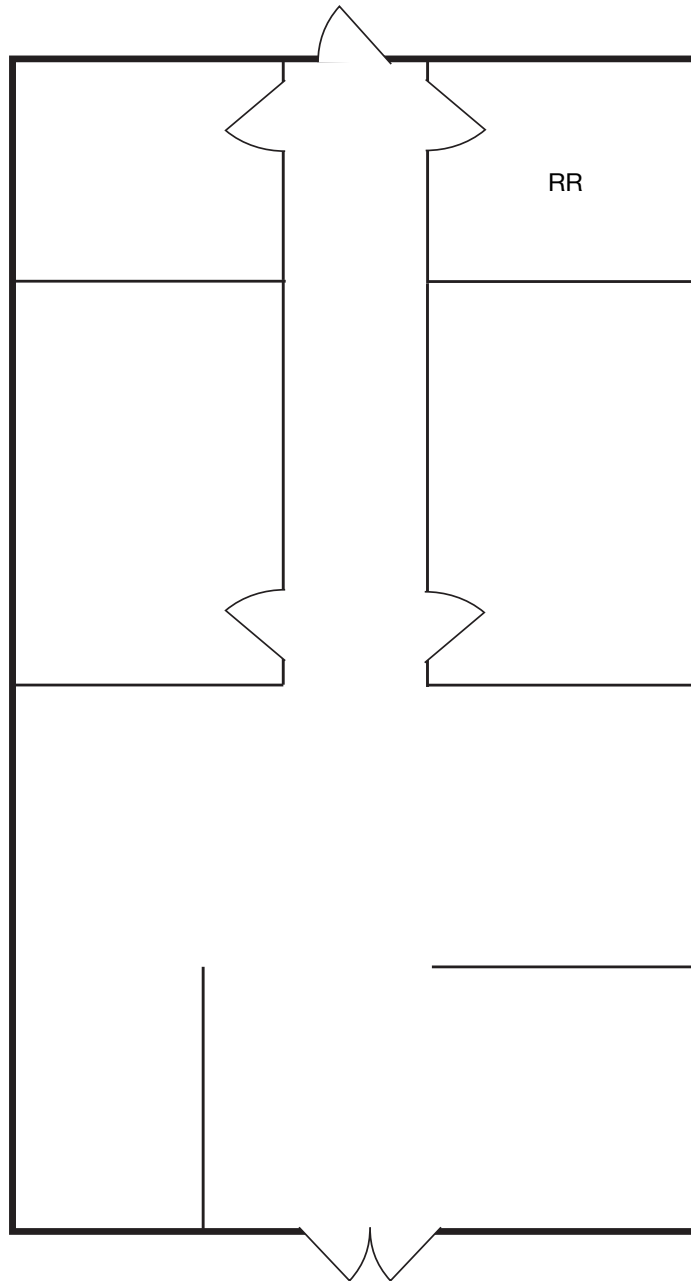
Lease Rate: \$1.25-\$1.65/SF NNN

(2025 estimated CAMs are \$0.80 PSF)

PECOS RUSSELL PLAZA

HIGH PROFILE RETAIL PLAZA • 3380 EAST RUSSELL ROAD | LAS VEGAS, NV 89120

FLOOR PLAN - SUITE 103 (1,000 SF) - \$1.25/SF



Floor Plan is not to exact scale. It is intended for general information purposes only.

FOR MORE INFORMATION CONTACT:

GERI JAMESON | NV Lic # S.0190514

o: 702.787.0123 | c: 702.907.0767 | leasing@virtusco.com

2490 Paseo Verde Pkwy, Ste 115, Henderson, NV 89074 | 702.787.0123 ph | 702.463.0123 fax

This statement with the information it contains is given with the understanding that all negotiations relating to the purchase, renting or leasing of the property described above shall be conducted through this office. The above information while not guaranteed has been secured from sources we believe to be reliable.

virtus
commercial

www.virtusco.com

AVAILABLE FOR LEASE
Lease Rate: \$1.25-\$1.65/SF NNN
(2025 estimated CAMs are \$0.80 PSF)

PECOS RUSSELL PLAZA

HIGH PROFILE RETAIL PLAZA • 3380 EAST RUSSELL ROAD | LAS VEGAS, NV 89120

SUITE 104 - 1,000 SF - \$1.25/SF



FOR MORE INFORMATION CONTACT:

GERI JAMESON | NV Lic # S.0190514

o: 702.787.0123 | c: 702.907.0767 | leasing@virtusco.com

2490 Paseo Verde Pkwy, Ste 115, Henderson, NV 89074 | 702.787.0123 ph | 702.463.0123 fax

This statement with the information it contains is given with the understanding that all negotiations relating to the purchase, renting or leasing of the property described above shall be conducted through this office. The above information while not guaranteed has been secured from sources we believe to be reliable.

virtus
commercial

www.virtusco.com

AVAILABLE FOR LEASE

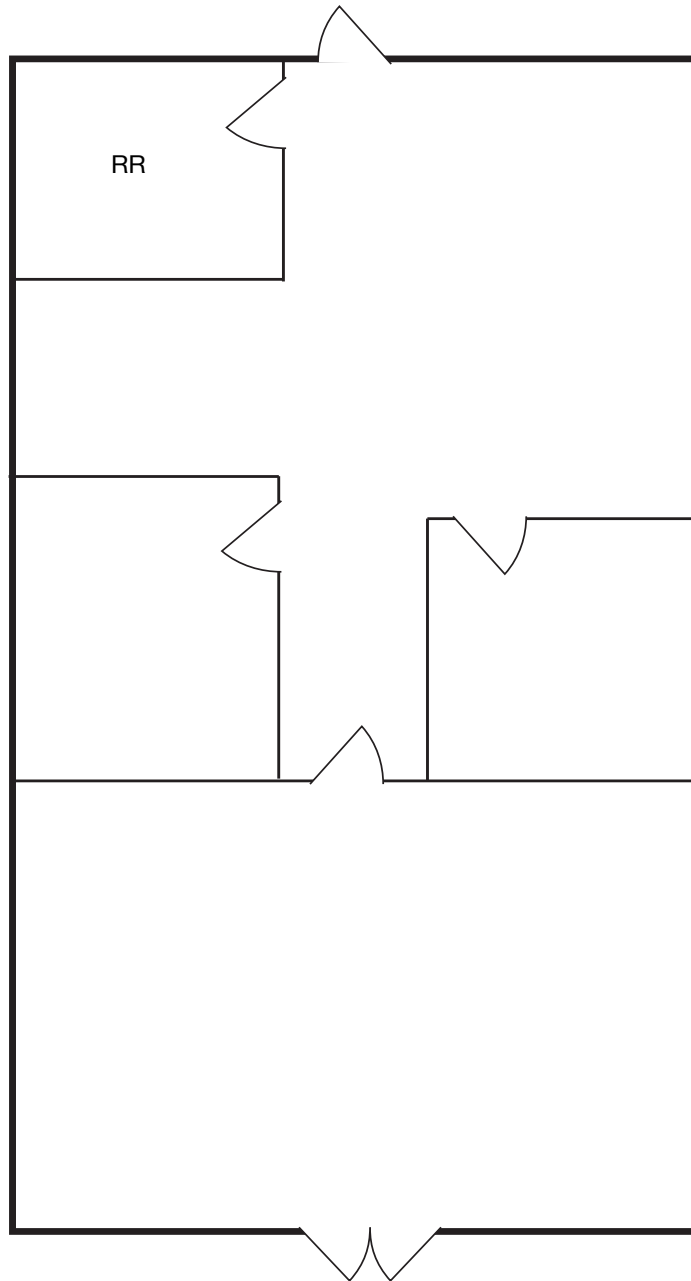
Lease Rate: \$1.25-\$1.65/SF NNN

(2025 estimated CAMs are \$0.80 PSF)

PECOS RUSSELL PLAZA

HIGH PROFILE RETAIL PLAZA • 3380 EAST RUSSELL ROAD | LAS VEGAS, NV 89120

FLOOR PLAN - SUITE 104 (1,000 SF) - \$1.25/SF



Floor Plan is not to exact scale. It is intended for general information purposes only.

FOR MORE INFORMATION CONTACT:

GERI JAMESON | NV Lic # S.0190514

o: 702.787.0123 | c: 702.907.0767 | leasing@virtusco.com

2490 Paseo Verde Pkwy, Ste 115, Henderson, NV 89074 | 702.787.0123 ph | 702.463.0123 fax

This statement with the information it contains is given with the understanding that all negotiations relating to the purchase, renting or leasing of the property described above shall be conducted through this office. The above information while not guaranteed has been secured from sources we believe to be reliable.

virtus
commercial

www.virtusco.com

AVAILABLE FOR LEASE

Lease Rate: \$1.25-\$1.65/SF NNN

(2025 estimated CAMs are \$0.80 PSF)

PECOS RUSSELL PLAZA

HIGH PROFILE RETAIL PLAZA • 3380 EAST RUSSELL ROAD | LAS VEGAS, NV 89120

SUITE 105 - 1,000 SF - \$1.25/SF



FOR MORE INFORMATION CONTACT:

GERI JAMESON | NV Lic # S.0190514

o: 702.787.0123 | c: 702.907.0767 | leasing@virtusco.com

2490 Paseo Verde Pkwy, Ste 115, Henderson, NV 89074 | 702.787.0123 ph | 702.463.0123 fax

This statement with the information it contains is given with the understanding that all negotiations relating to the purchase, renting or leasing of the property described above shall be conducted through this office. The above information while not guaranteed has been secured from sources we believe to be reliable.

virtus
commercial

www.virtusco.com

AVAILABLE FOR LEASE

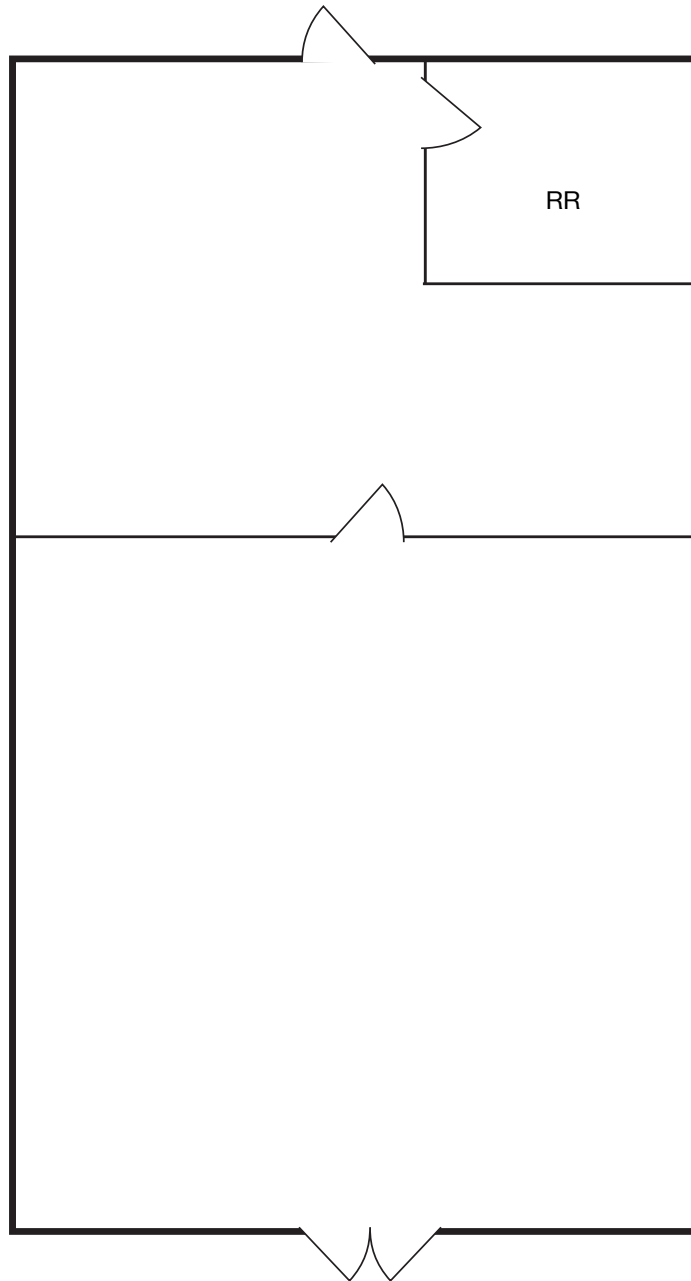
Lease Rate: \$1.25-\$1.65/SF NNN

(2025 estimated CAMs are \$0.80 PSF)

PECOS RUSSELL PLAZA

HIGH PROFILE RETAIL PLAZA • 3380 EAST RUSSELL ROAD | LAS VEGAS, NV 89120

FLOOR PLAN - SUITE 105 (1,000 SF) - \$1.25/SF



Floor Plan is not to exact scale. It is intended for general information purposes only.

FOR MORE INFORMATION CONTACT:

GERI JAMESON | NV Lic # S.0190514

o: 702.787.0123 | c: 702.907.0767 | leasing@virtusco.com

2490 Paseo Verde Pkwy, Ste 115, Henderson, NV 89074 | 702.787.0123 ph | 702.463.0123 fax

This statement with the information it contains is given with the understanding that all negotiations relating to the purchase, renting or leasing of the property described above shall be conducted through this office. The above information while not guaranteed has been secured from sources we believe to be reliable.

virtus
commercial

www.virtusco.com

AVAILABLE FOR LEASE
Lease Rate: \$1.25-\$1.65/SF NNN
(2025 estimated CAMs are \$0.80 PSF)

PECOS RUSSELL PLAZA

HIGH PROFILE RETAIL PLAZA • 3380 EAST RUSSELL ROAD | LAS VEGAS, NV 89120

SUITE 107 - 1,000 SF - \$1.65/SF



FOR MORE INFORMATION CONTACT:

GERI JAMESON | NV Lic # S.0190514

o: 702.787.0123 | c: 702.907.0767 | leasing@virtusco.com

2490 Paseo Verde Pkwy, Ste 115, Henderson, NV 89074 | 702.787.0123 ph | 702.463.0123 fax

This statement with the information it contains is given with the understanding that all negotiations relating to the purchase, renting or leasing of the property described above shall be conducted through this office. The above information while not guaranteed has been secured from sources we believe to be reliable.

virtus
commercial

www.virtusco.com

AVAILABLE FOR LEASE

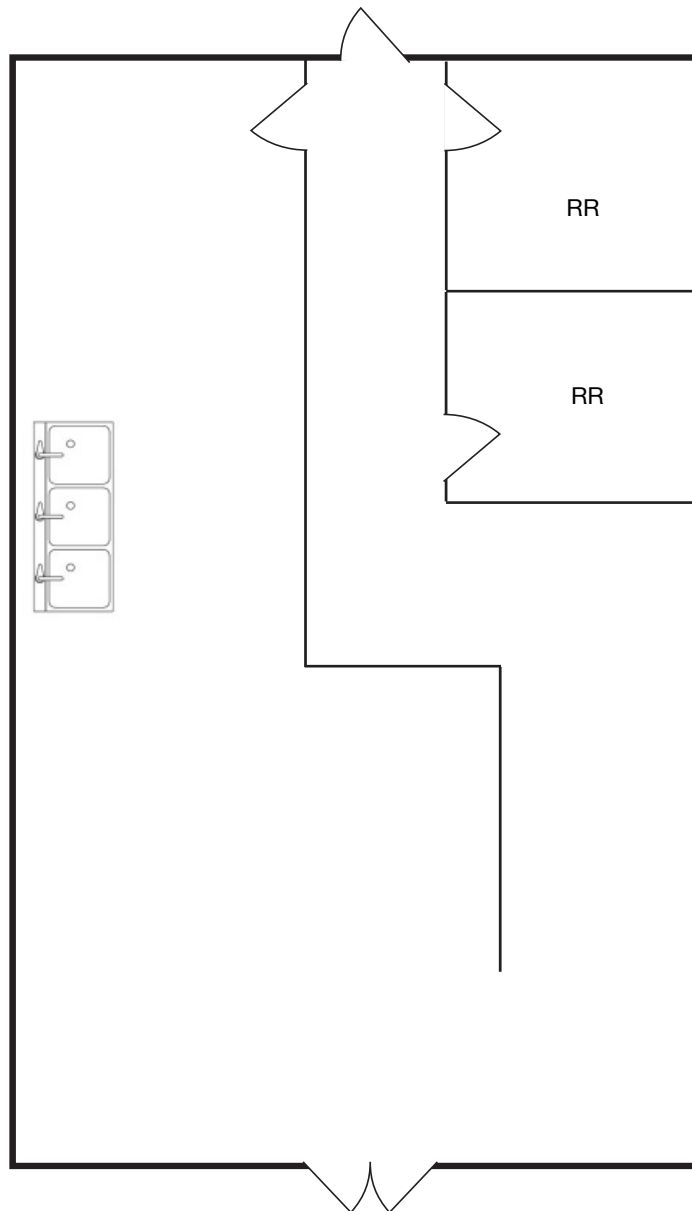
Lease Rate: \$1.25-\$1.65/SF NNN

(2025 estimated CAMs are \$0.80 PSF)

PECOS RUSSELL PLAZA

HIGH PROFILE RETAIL PLAZA • 3380 EAST RUSSELL ROAD | LAS VEGAS, NV 89120

FLOOR PLAN - SUITE 107 (1,000 SF) - \$1.65/SF



FOR MORE INFORMATION CONTACT:

Floor Plan is not to exact scale. It is intended for general information purposes only.

GERI JAMESON | NV Lic # S.0190514

o: 702.787.0123 | c: 702.907.0767 | leasing@virtusco.com

2490 Paseo Verde Pkwy, Ste 115, Henderson, NV 89074 | 702.787.0123 ph | 702.463.0123 fax

This statement with the information it contains is given with the understanding that all negotiations relating to the purchase, renting or leasing of the property described above shall be conducted through this office. The above information while not guaranteed has been secured from sources we believe to be reliable.

virtus
commercial

www.virtusco.com

AVAILABLE FOR LEASE
Lease Rate: \$1.25-\$1.65/SF NNN
(2025 estimated CAMs are \$0.80 PSF)

PECOS RUSSELL PLAZA

HIGH PROFILE RETAIL PLAZA • 3380 EAST RUSSELL ROAD | LAS VEGAS, NV 89120

SUITE 109 - 1,000 SF - \$1.25/SF



FOR MORE INFORMATION CONTACT:

GERI JAMESON | NV Lic # S.0190514

o: 702.787.0123 | c: 702.907.0767 | leasing@virtusco.com

2490 Paseo Verde Pkwy, Ste 115, Henderson, NV 89074 | 702.787.0123 ph | 702.463.0123 fax

This statement with the information it contains is given with the understanding that all negotiations relating to the purchase, renting or leasing of the property described above shall be conducted through this office. The above information while not guaranteed has been secured from sources we believe to be reliable.

virtus
commercial

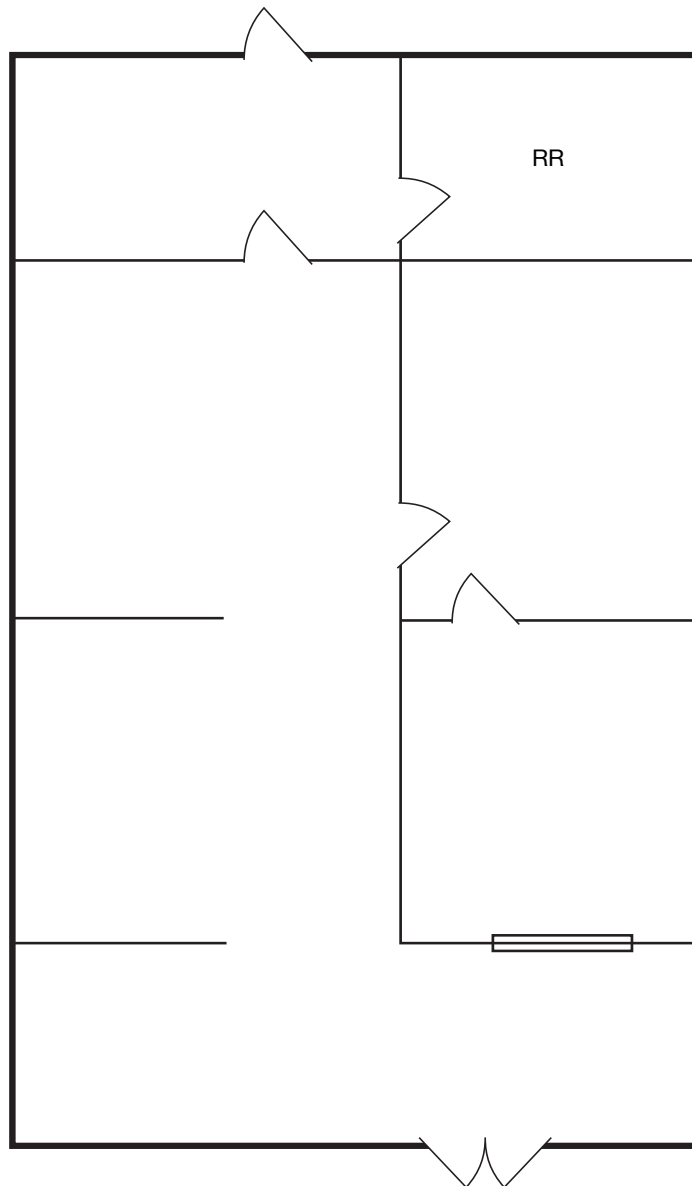
www.virtusco.com

AVAILABLE FOR LEASE
Lease Rate: \$1.25-\$1.65/SF NNN
(2025 estimated CAMs are \$0.80 PSF)

PECOS RUSSELL PLAZA

HIGH PROFILE RETAIL PLAZA • 3380 EAST RUSSELL ROAD | LAS VEGAS, NV 89120

FLOOR PLAN - SUITE 109 (1,000 SF) - \$1.25/SF



FOR MORE INFORMATION CONTACT:

Floor Plan is not to exact scale. It is intended for general information purposes only.

GERI JAMESON | NV Lic # S.0190514

o: 702.787.0123 | c: 702.907.0767 | leasing@virtusco.com

2490 Paseo Verde Pkwy, Ste 115, Henderson, NV 89074 | 702.787.0123 ph | 702.463.0123 fax

This statement with the information it contains is given with the understanding that all negotiations relating to the purchase, renting or leasing of the property described above shall be conducted through this office. The above information while not guaranteed has been secured from sources we believe to be reliable.

virtus
commercial

www.virtusco.com

AVAILABLE FOR LEASE

Lease Rate: \$1.25-\$1.65/SF NNN

(2025 estimated CAMs are \$0.80 PSF)

PECOS RUSSELL PLAZA

HIGH PROFILE RETAIL PLAZA • 3380 EAST RUSSELL ROAD | LAS VEGAS, NV 89120

AERIAL OVERVIEW



FOR MORE INFORMATION CONTACT:

These maps are intended for general information purposes only. It is not to exact scale, and exact boundaries of areas may differ.

GERI JAMESON | NV Lic # S.0190514

o: 702.787.0123 | c: 702.907.0767 | leasing@virtusco.com

2490 Paseo Verde Pkwy, Ste 115, Henderson, NV 89074 | 702.787.0123 ph | 702.463.0123 fax

This statement with the information it contains is given with the understanding that all negotiations relating to the purchase, renting or leasing of the property described above shall be conducted through this office. The above information while not guaranteed has been secured from sources we believe to be reliable.



www.virtusco.com