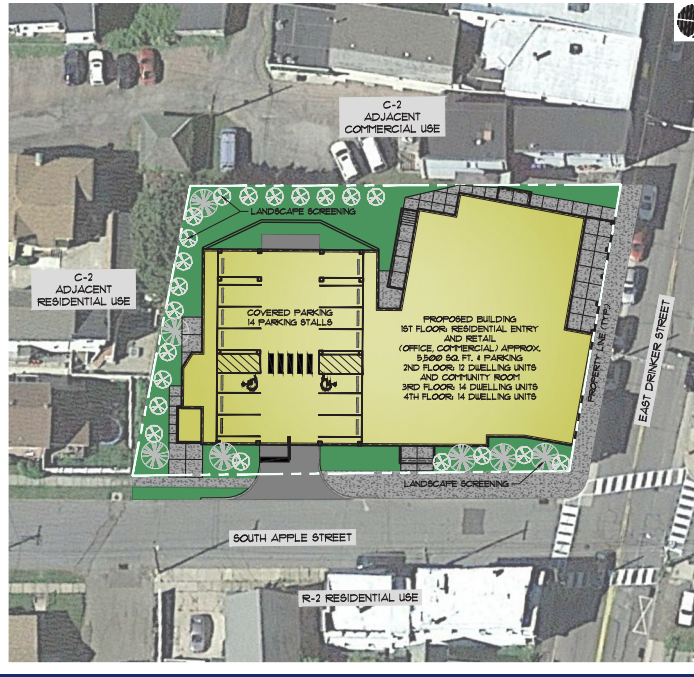




222 Drinker Street, Scranton, Pennsylvania

Buy as a Condo or Lease what you need!

- New construction 5,396 SF Commercial space for Sale (condominium) or lease
- Divisible to three separate units
- Commercial unit at street level with great visibility
- Faces high traffic roadway with traffic count 9,752 AADT (PennDOT Tire 2023)
- Zoned C-2 Central Business District. Many uses include retail, financial services, medical/professional offices, etc.)
- 40 senior housing units situated above the commercial space, built in consumers.

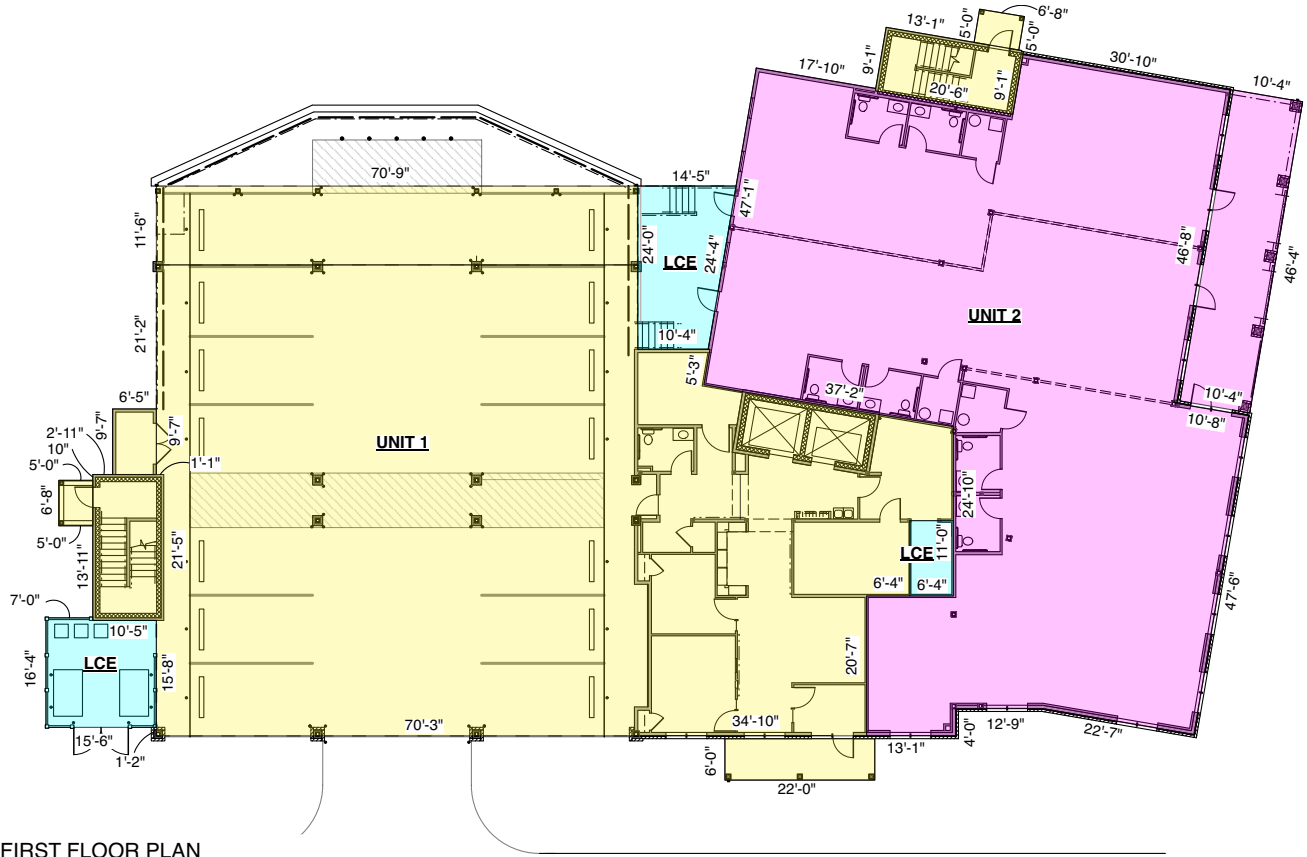


769 Keystone Industrial Park Road
Throop, PA 18512
info@hinerfeldcommercial.com

IREM INSTITUTE OF REAL ESTATE MANAGEMENT
BOMA International
SIOR
CCIM
ICSC MEMBER

570-207-4100
www.hinerfeldcommercial.com

REALTORS
1934
SINCE 1934



FIRST FLOOR PLAN
SCALE: 1/16" = 1'-0"
0 8 16 FT

DRAFT CONDOMINIUM AREA SUMMARY	RESIDENTIAL CONTRACT	COMMON ELEMENTS	COMMERCIAL CONTRACT	FLOOR TOTALS
	UNIT 1 RESIDENTIAL	SHARED BY UNITS 1 & 2	UNIT 2 COMMERCIAL	
PORCHES / ENCLOSURES +	1,556 S.F.	554 S.F.	480 S.F.	2,590 S.F.
FIRST FLOOR +	7,280 S.F.	71 S.F.	5396 S.F.	12,747 S.F.
SECOND FLOOR +	12,712 S.F.	0 S.F.	0 S.F.	12,712 S.F.
THIRD FLOOR +	12,712 S.F.	0 S.F.	0 S.F.	12,712 S.F.
FOURTH FLOOR +	12,712 S.F.	0 S.F.	0 S.F.	12,712 S.F.
Total Unit Square Feet	45416 S.F.	71 S.F.	5396 S.F.	50,883 S.F.
Percentage of Total Space	89.26%	0.14%	10.60%	



1 EAST DRINKER STREET ELEVATION
SCALE: 1/16" = 1'-0"
0 8 16 FT



2 SOUTH APPLE STREET ELEVATION
SCALE: 1/16" = 1'-0"
0 8 16 FT

- New construction mixed use center located at 222 Drinker Street Dunmore.
- First floor retail available for Sale
- Possibility to lease up to 3 retail/commercial suites.
- 40 Senior Housing units will be situated on 3 floors above commercial spaces.

769 Keystone Industrial Park Road
Throop, PA 18512
info@hinerfeldcommercial.com

IREM INSTITUTE OF REAL ESTATE MANAGEMENT
SIOR
BOMA International
CCIM
ICSC MEMBER

570-207-4100
www.hinerfeldcommercial.com
REALTORS
1934
SINCE 1934