

1111 Concord Street S

South St. Paul, MN 55075

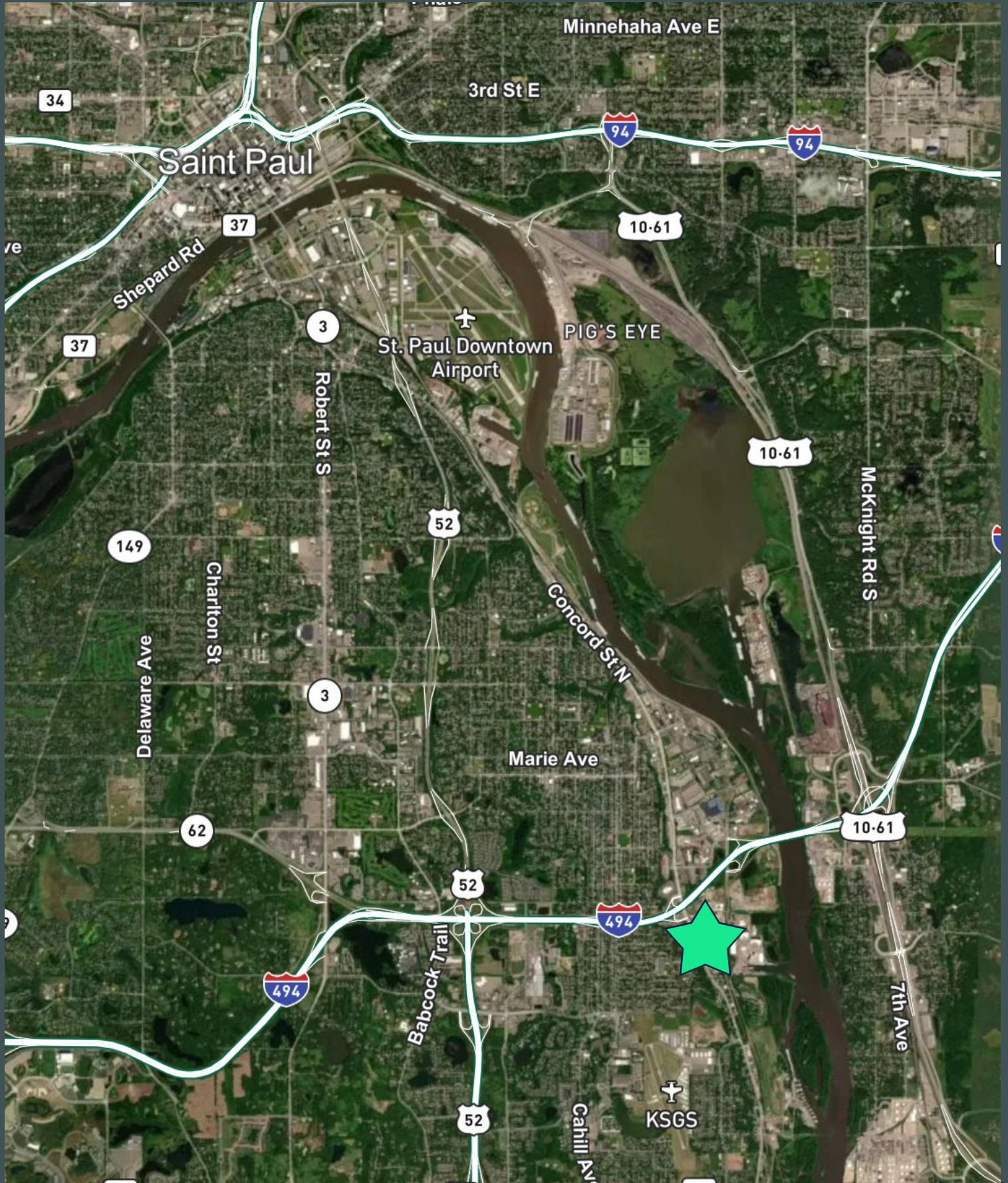


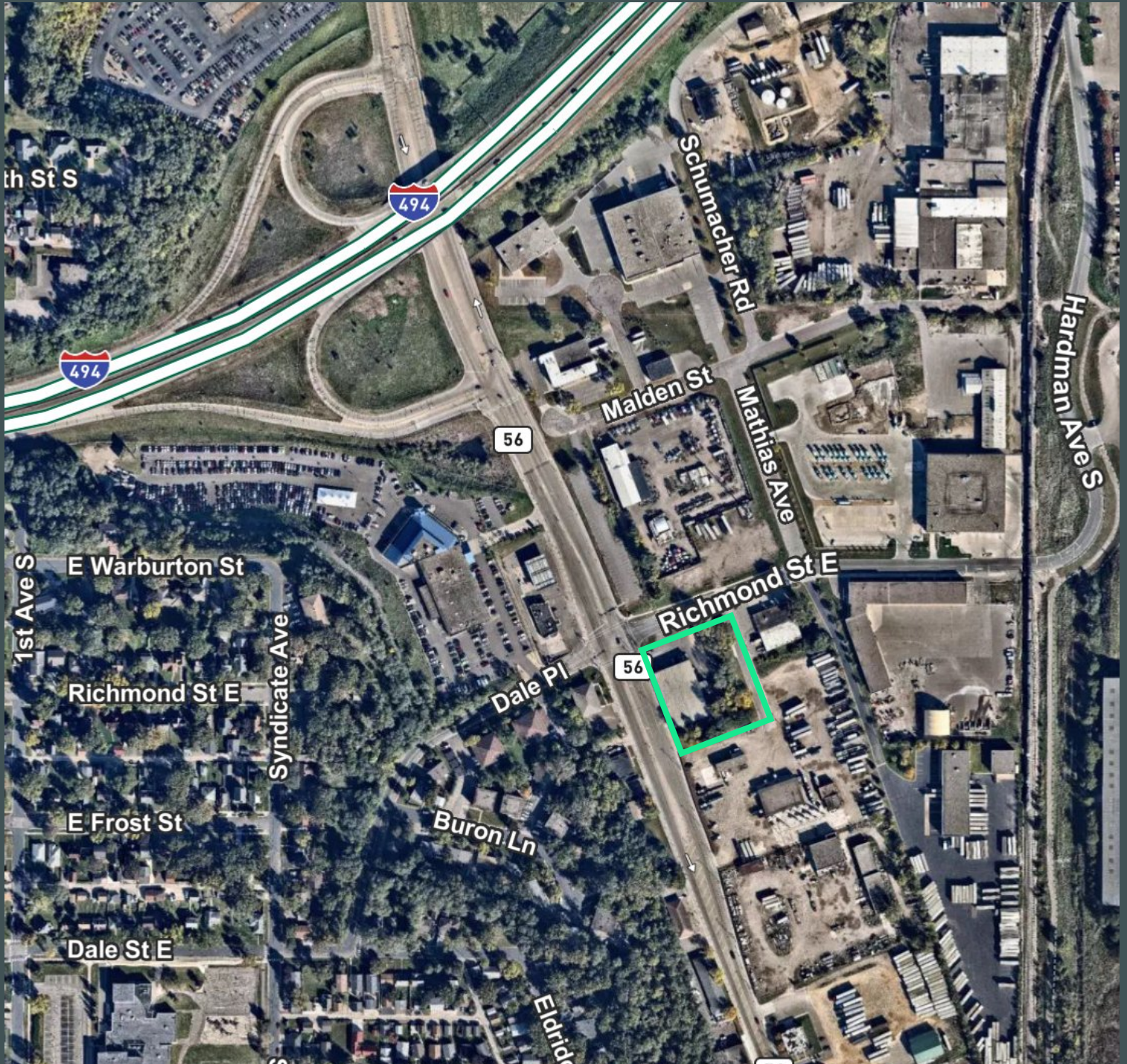
- 15,300 SF stand alone building in South St. Paul
- Great access to major Interstates and Highways
- Visibility to Concord Street South



Building Specifications

- Building Size: 15,300 SF Total
- Office/Showroom: 3,300 SF
- Warehouse: 12,000 SF
- Clear Height: 17'
- Loading:
 - (1) Dock
 - (2) drive-ins
 - 10'W x 10'H with glass panels
 - 12'W x 12'H
- Year Built: 1974
- PID: 36.71500.17.291
- Parcel Size: 1.75
- Zoning: GB - General Business District
- Rates: Negotiable
- 2024 Tax: \$31,046
- Lease Expiration: August 14, 2027





Contact Us

Bryan Van Hoof
Senior Vice President
+1 952 924 4624
bryan.vanhoof@cbre.com

Jeff Przytarski
First Vice President
+1 952 924 4895
jeff.przytarski@cbre.com

Sam Manke
Senior Associate
+1 763 398 9047
sam.manke@cbre.com