



## *20 8th Avenue Carbondale, Pennsylvania*

29,259± SF Industrial warehouse for sale in Carbondale Pennsylvania. Property includes 3 parcels, lot with the warehouse, and two vacant lot in the rear of building that can be used for extra parking. Located approximately 2.5 miles from U.S. Route 6 provides access to other Interstate Routes including Interstate 81, Interstate 84, and Interstate 476. M-1 zoning allows many different manufacturing and commercial uses including food processing, clothing manufacturing, warehousing, packaging, and office uses. 3 Phase electric powers the building with public utilities including water, sewer, and natural gas.

- +/- 29,259 SF Building
- Zoned M-1 Light Industrial
- Concrete Construction
- Wet Sprinkler System
- Public Gas, Water, & Sewer
- Rear Dock with Freight Elevator



769 Keystone Industrial Park Road

Throop, PA 18512

info@hinerfeldcommercial.com

IREM  
INSTITUTE OF REAL ESTATE MANAGEMENT

BOMA  
International



SIOR

CCIM

ICSC  
MEMBER

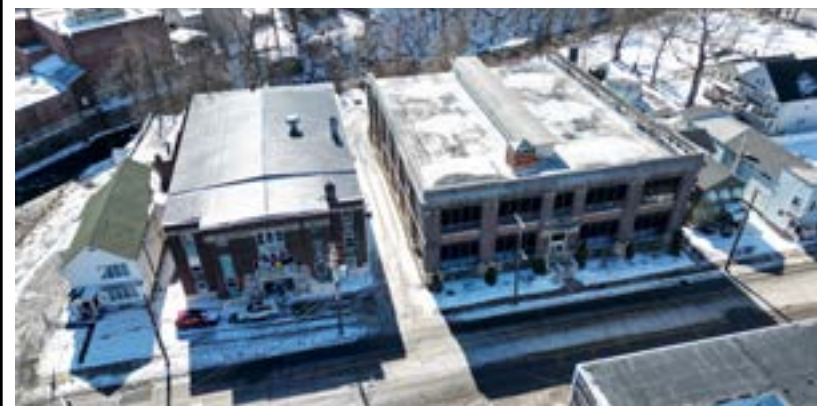
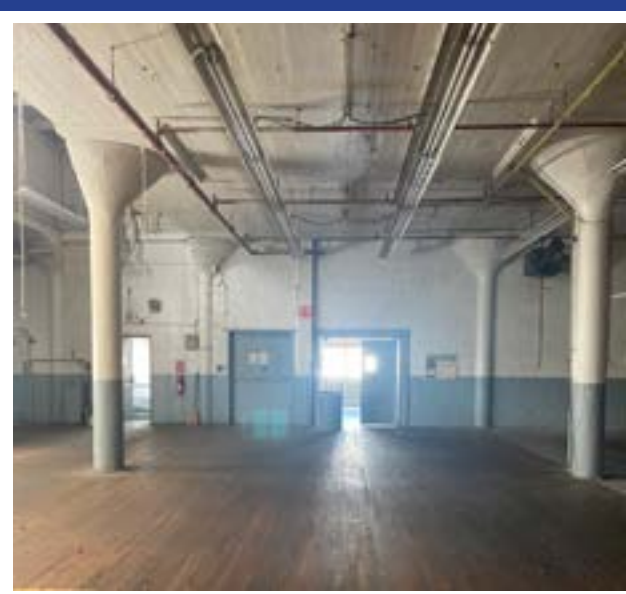
570-207-4100

www.hinerfeldcommercial.com

REALTORS

1934

SINCE 1934



769 Keystone Industrial Park Road  
Throop, PA 18512  
info@hinerfeldcommercial.com

**IREM** INSTITUTE OF REAL ESTATE MANAGEMENT  
**SIOR**  
**BOMA** International  
**CCIM**  
**ICSC** MEMBER

570-207-4100  
www.hinerfeldcommercial.com

REALTORS  
**1934**  
SINCE 1934