

378 Broome Street



Prime NoLita Opportunity

Located between Mulberry St & Mott St

B/H REALTY

378 Broome Street

SPACE DETAILS

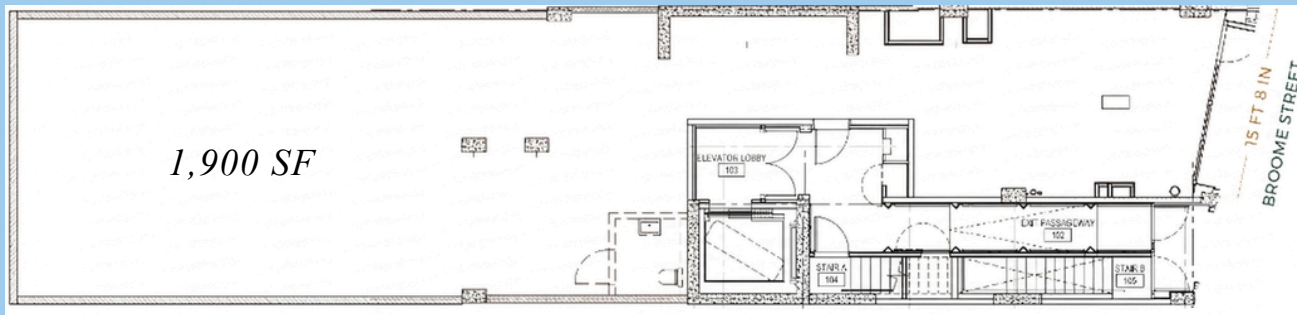
Ground Floor : 1,900 SF

Frontage : 16 FT

Ceiling Height : 12 FT

Term : Negotiable

FLOORPLAN



*Delivered in white box condition with HVAC, gas,
and venting in place.*



378 Broome Street



B
H
REALTY

FOR MORE INFORMATION PLEASE CONTACT:



Max Maleh

✉ MAX@BHR.NYC

📱 917.952.3670

WWW.BHR.NYC