



**Available for Lease**

**±919 - ±5,370 SF**

# Ramona Business Park

## Sacramento

**3443-3473 Ramona Avenue | Sacramento, CA**

### Description

3443, 3453, 3463, and 3473 Ramona Avenue are located off of Power Inn Road less than one quarter (1/4) mile South of Highway 50, approximately ten minutes from downtown Sacramento. This property is perfect for office and industrial tenants alike with ample parking in a quiet, well landscaped business park setting.



**JACKSON**  
PROPERTIES

**For further information please contact us at (916) 381-8113 or [jacksonprop.com](http://jacksonprop.com)**

Broker participation is invited.

The information herein is provided from reliable sources; however, Jackson Properties, Inc. assumes no liability for accuracy. The individual broker or user should confirm the physical information for themselves. Prices subject to change without notice.

### Property Features

- Professional & Attractive Business Park
- Immediate Occupancy
- Excellent Freeway Access
- 100% Office/Tech Available
- Warehouse Space Available
- Abundant On-Site Parking
- Close to Light Rail, Granite Regional Park, and many food services



# 3443-3473 Ramona Avenue Sacramento

Available Units	Total Size	Office Size	Monthly Rent
3463 Ramona Avenue, Suite 16*	±919 SF	±919 SF	\$1,011.00 NNN
3453 Ramona Avenue, Suite 10	±1,393 SF	±1,393 SF	\$1,465.00 NNN
3453 Ramona Avenue, Suite 3*	±1,956 SF	±361 SF	\$1,515.00 NNN
3453 Ramona Avenue, Suite 2	±2,090 SF	±646 SF	\$1,720.00 NNN
3463 Ramona Avenue, Suite 20	±4,137 SF	±2,223 SF	\$3,435.00 NNN
3443 Ramona Avenue, Suite 21^	±5,370 SF	±1,175 SF	\$4,565.00 NNN

^Includes 10,680 SF of fenced yard.



**JACKSON**  
PROPERTIES

For further information please contact us at (916) 381-8113 or [jacksonprop.com](http://jacksonprop.com)

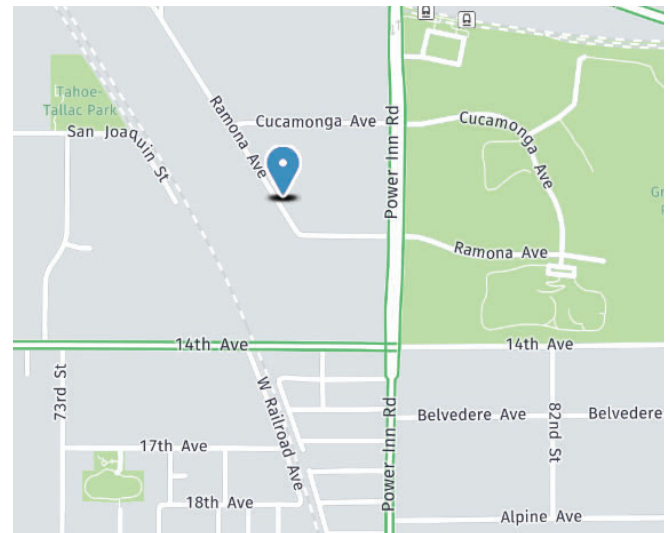
Broker participation is invited.

The information herein is provided from reliable sources; however, Jackson Properties, Inc. assumes no liability for accuracy. The individual broker or user should confirm the physical information for themselves. Prices subject to change without notice. Disclaimer for 3-5 lease rate.



# Sacramento Office

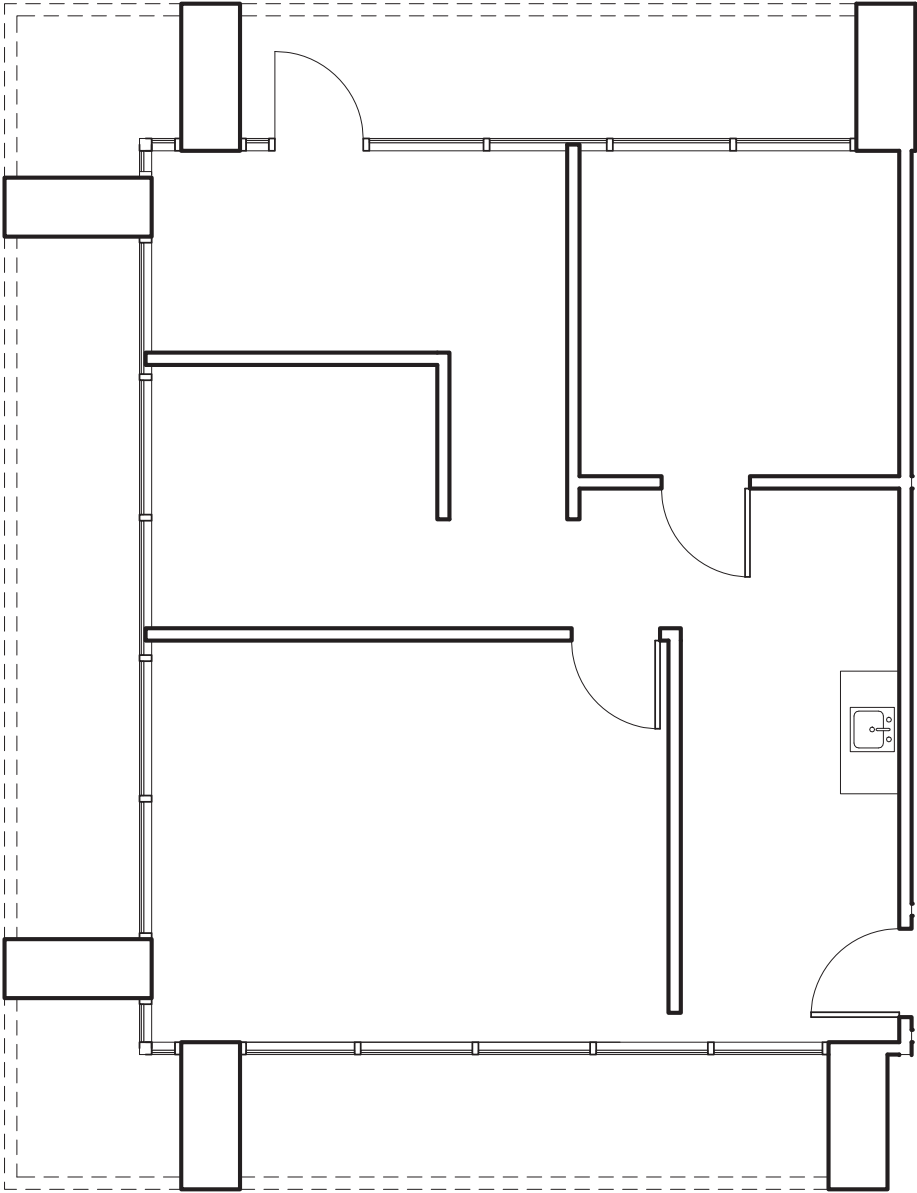
Ramona Ave at Power Inn Rd



For further information please contact us at (916) 381-8113 or [jacksonprop.com](http://jacksonprop.com)

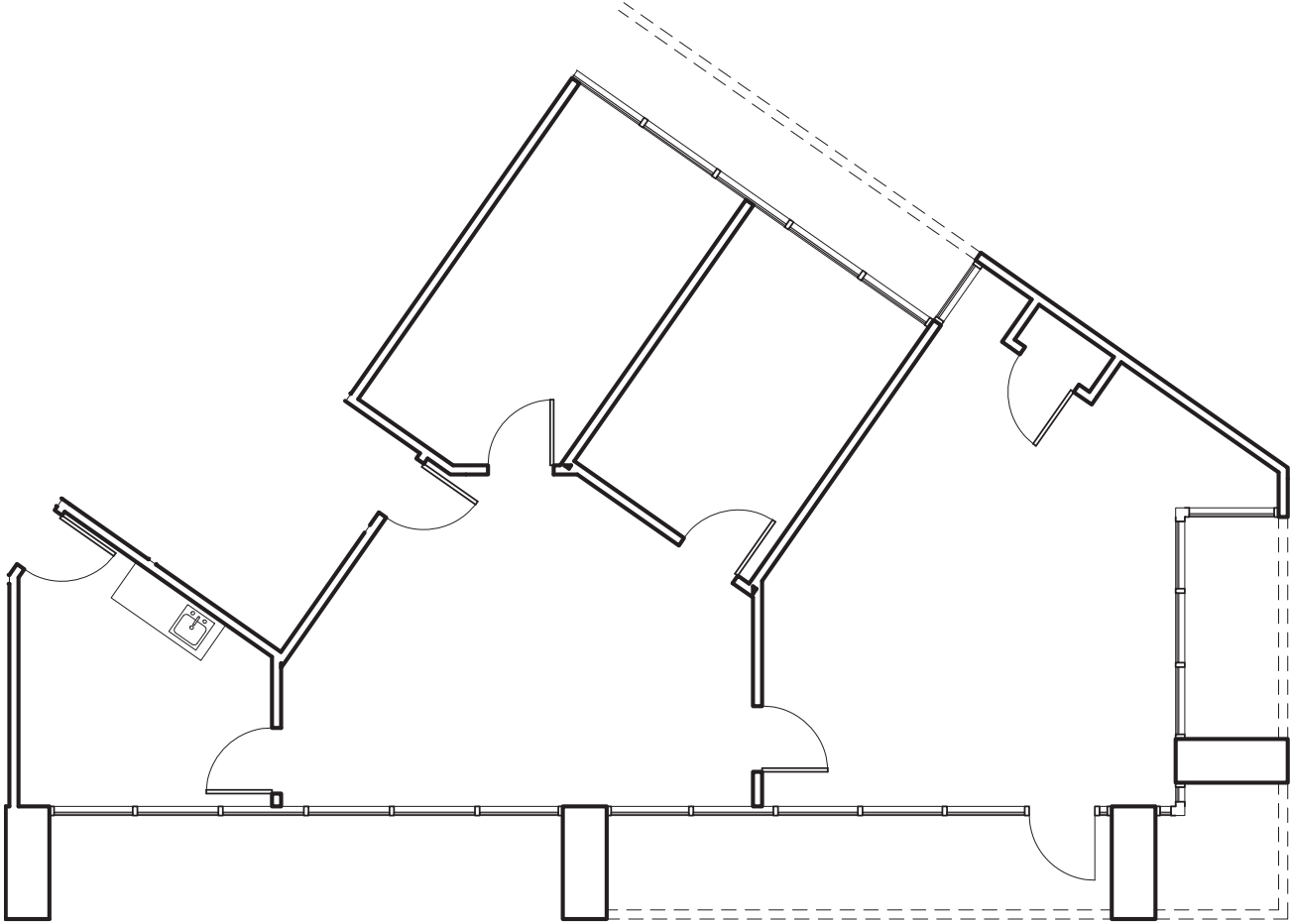
# 3463 Ramona Avenue

Suite 16 ±919 SF Office



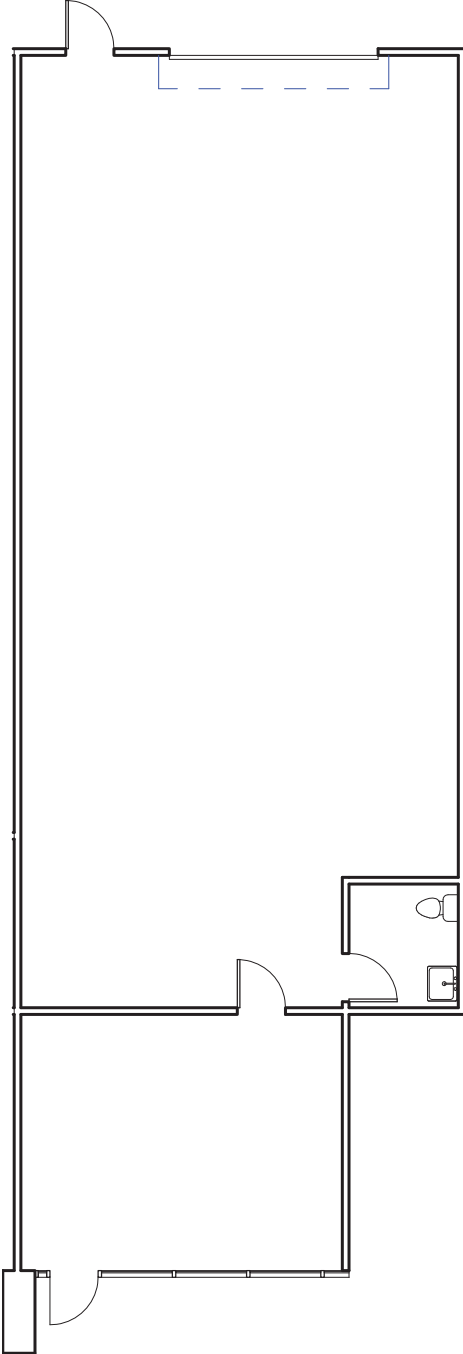
# 3453 Ramona Avenue

## Suite 10 ±1,393 SF Office



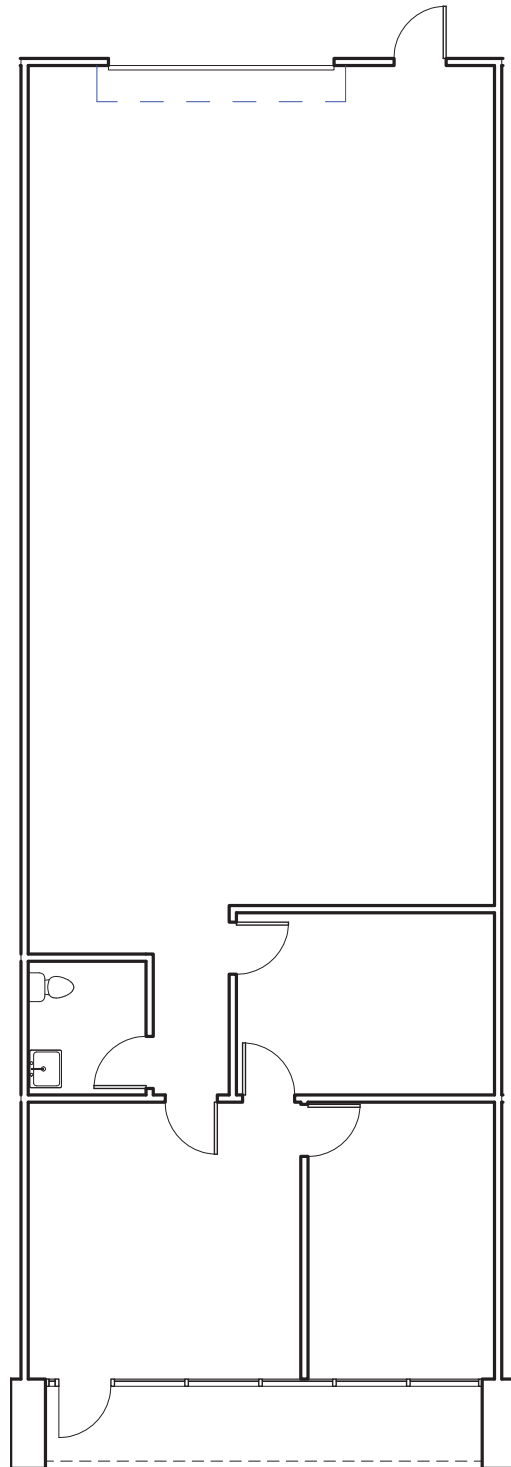
# 3453 Ramona Avenue

Suite 3 ±1,956 SF w/361 SF Office



# 3453 Ramona Avenue

Suite 2 ±2,090 SF w/646 SF Office

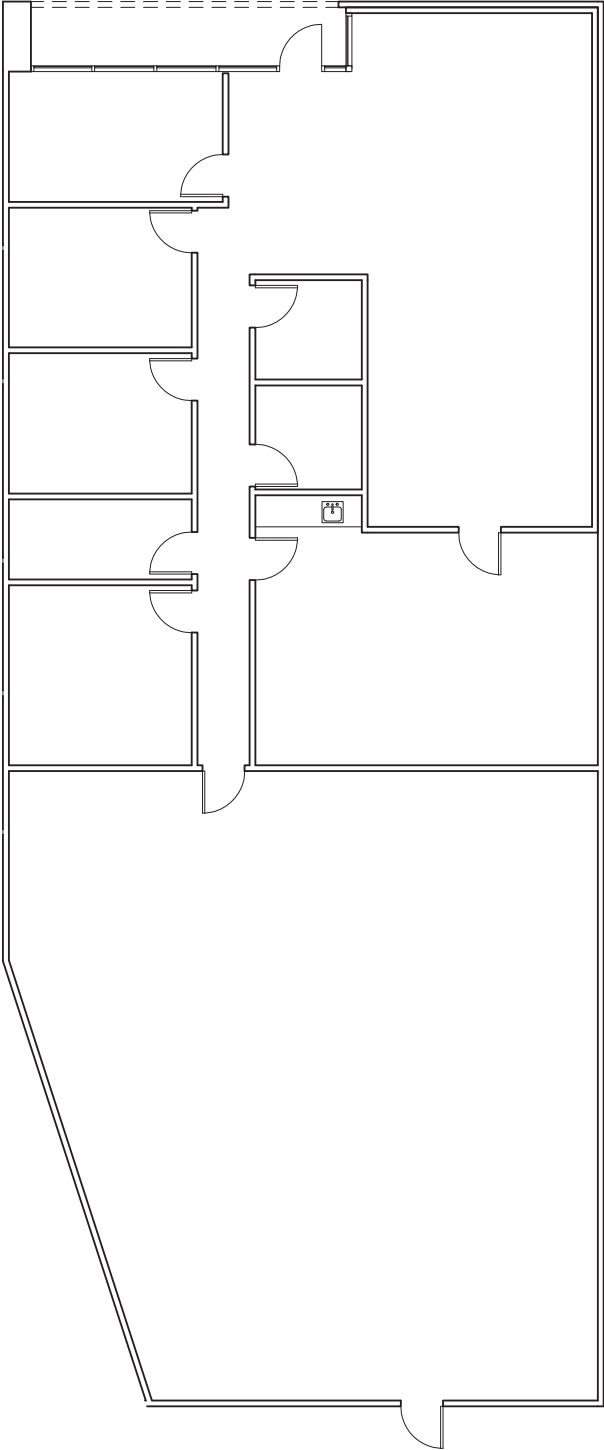


**JACKSON**  
PROPERTIES

Disclaimer: For reference only. Not to scale.

# 3463 Ramona Avenue

Suite 20 ±4,137 SF w/2,223 SF Office





# 3443 Ramona Avenue

Suite 21 ±5,370 SF w/1,175 SF Office

