



Approved 62 ± Acre Development Site

Offering Summary

Sale Price:	Contact Broker
Lot Size:	62.17 Acres
Zoning:	Proposed Medium Density of R3 (4 units/Acre)

Get more information

Will White
Senior Vice President
D 770 532 9911
will.white@avisonyoung.com



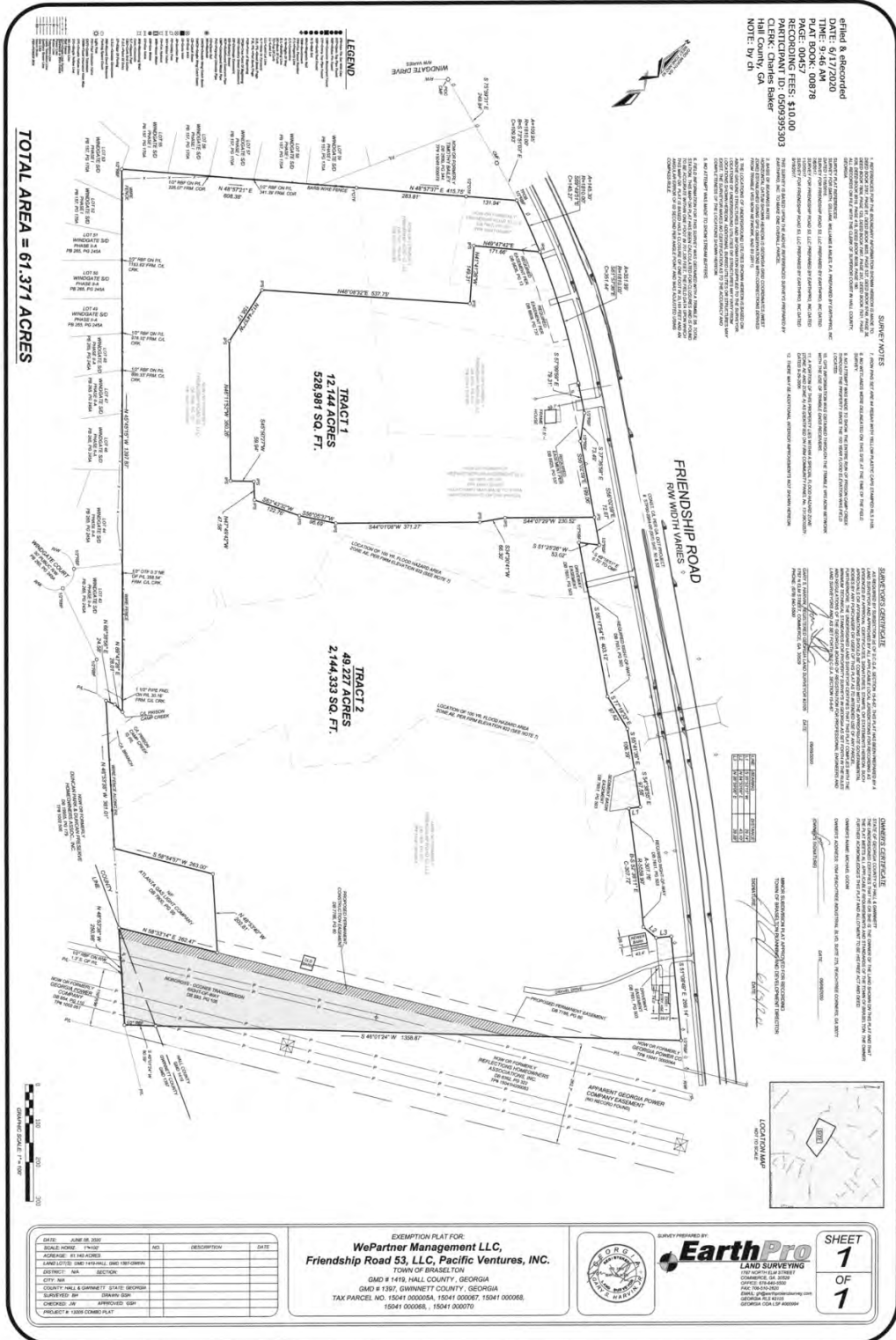
Property Highlights

- Proximity to Northeast Georgia Medical Center
- Approximately 62.17 ± Acres
- Annexed into The City of Braselton, Hall County
- All utilities nearby
- High exposure location

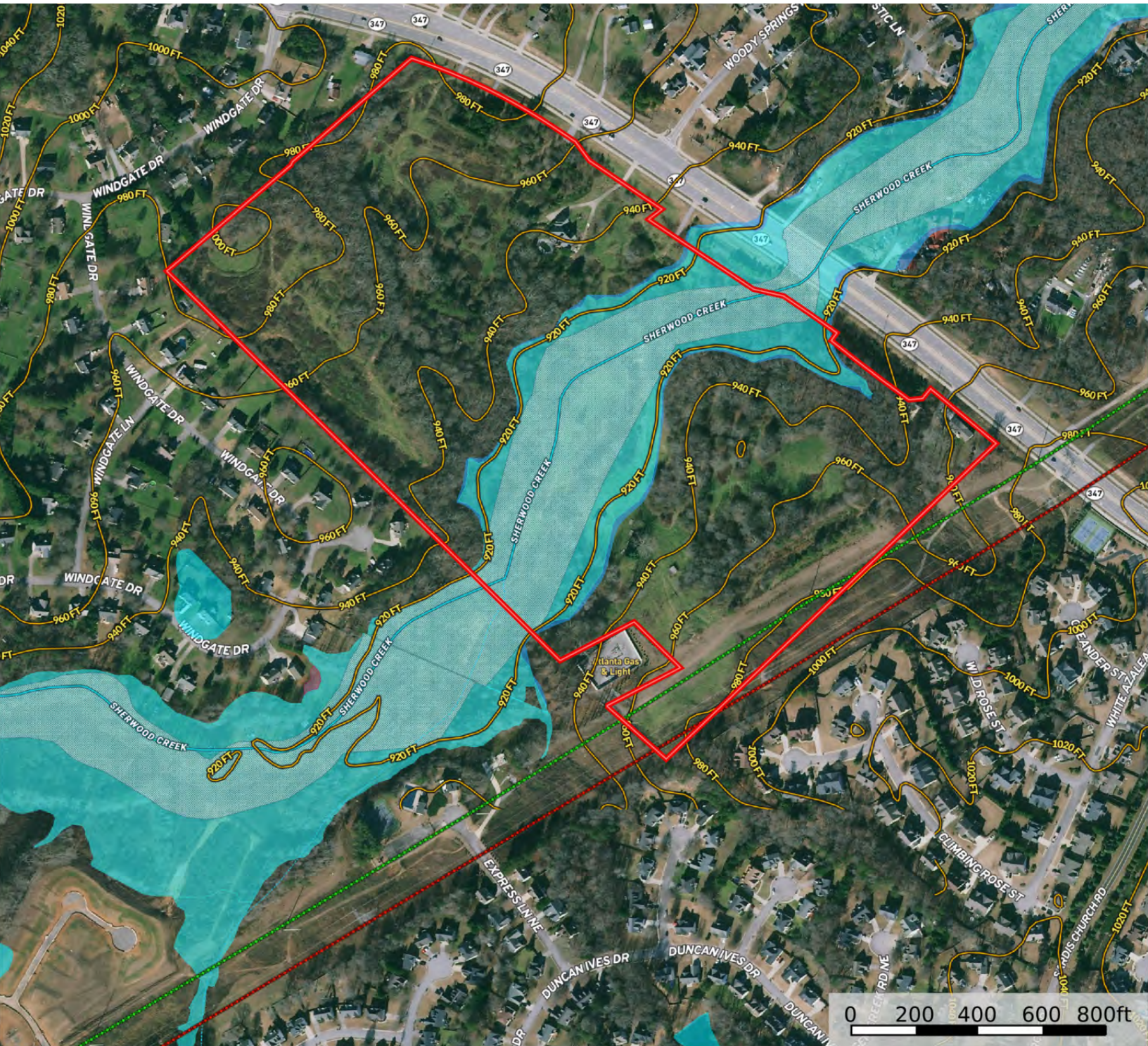
Demographics	1 Mile	5 Miles	10 Miles
Total Households	942	30,169	100,282
Total Population	3,349	94,526	302,597
Average HH Income	\$138,652	\$121,018	\$100,529



Will White
 Senior Vice President
 D 770 532 9911
 will.white@avisonyoung.com



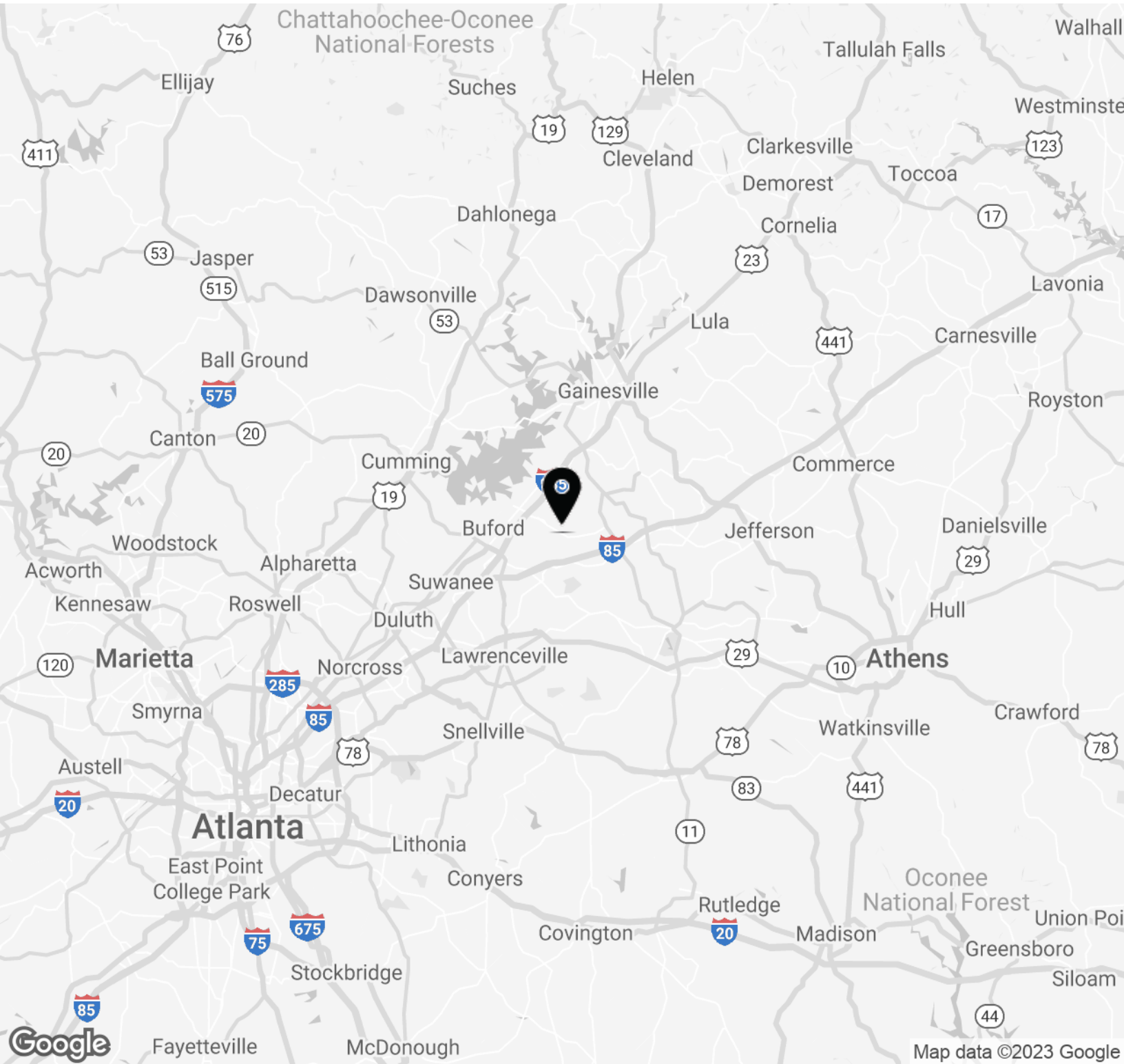
Will White
 Senior Vice President
 D 770 532 9911
 will.white@avisonyoung.com



AVISON YOUNG
Will White
 Senior Vice President
 D 770 532 9911
will.white@avisonyoung.com

Location Map

3036 Friendship Road



**AVISON
YOUNG**

Will White
Senior Vice President
D 770 532 9911
will.white@avisonyoung.com

Avison Young - Gainesville | 425 Spring Street SE, Suite 200 | Gainesville, GA 30501

© 2023. Avison Young - Gainesville. Information contained herein was obtained from sources deemed reliable and, while thought to be correct, have not been verified. Avison Young - Gainesville does not guarantee the accuracy or completeness of the information presented, nor assumes any responsibility or liability for any errors or omissions therein.



for more information, please contact

Will White

Senior Vice President

D 770 532 9911

will.white@avisonyoung.com

Avison Young - Gainesville | 425 Spring Street SE, Suite 200 | Gainesville, GA 30501

© 2023. Avison Young - Gainesville. Information contained herein was obtained from sources deemed reliable and, while thought to be correct, have not been verified. Avison Young - Gainesville does not guarantee the accuracy or completeness of the information presented, nor assumes any responsibility or liability for any errors or omissions therein.