

Retail Space for Lease

22 Frost Street

Williamsburg, Brooklyn, NY

Location:

Entrance on Frost Street

Retail Space:

Ground Floor: 3,518 SF

Frontage:

25 FT on Frost Street

Ceiling Heights:

13 FT

Price:

Upon request

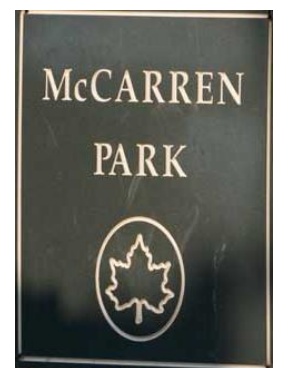
Highlights:

- Newly developed Retail Space available in a mixed-use building with luxury residences above
- Strong Foot Traffic
- Close proximity to McCarren Park
- Located 5 minutes walking distance from the Bedford Avenue L-train & Metropolitan Ave G-train subway stops
- Landlord can deliver a custom build-out for Tenant



Local Attractions:

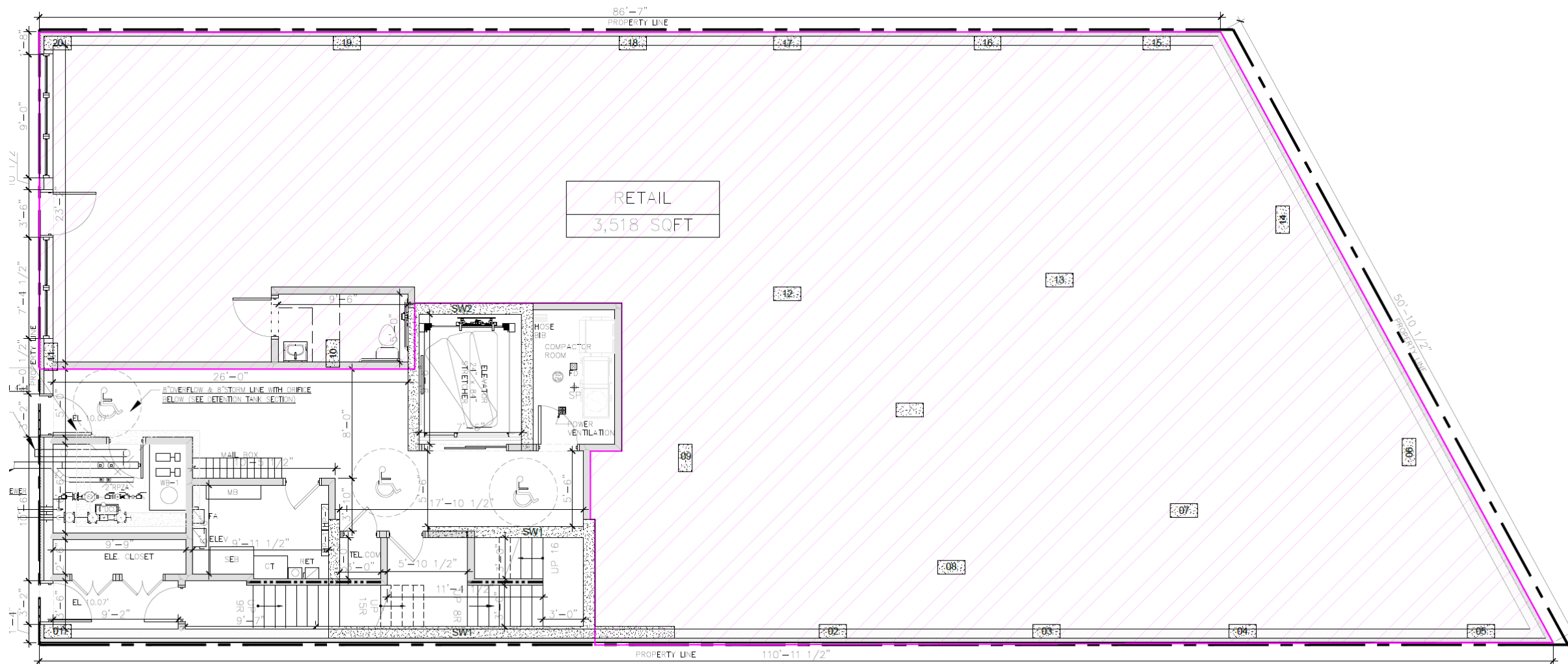
חסידי



Call/Text:
516 350 2621

Williamsburg, Brooklyn, NY

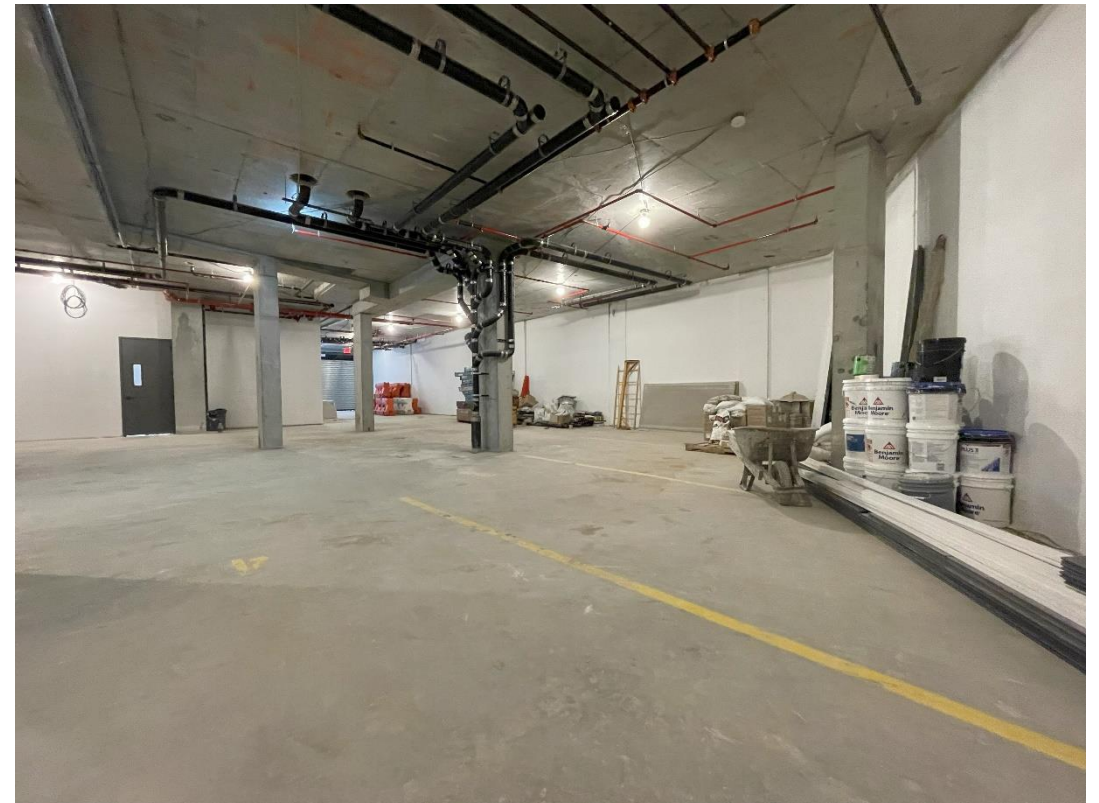
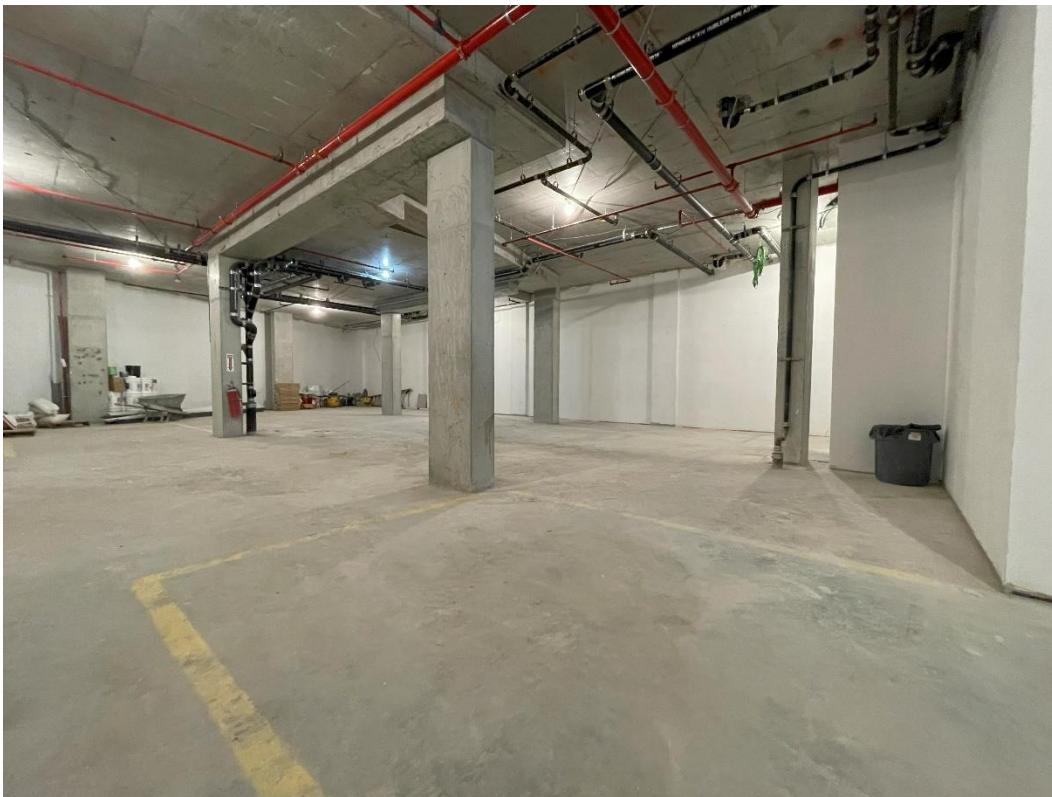
Frost Street



22 Frost Street

Interior Photos

Williamsburg, Brooklyn, NY



CONTACT

JOSH SLOAN

516-350-2621

JS@SLOAN-RE.COM