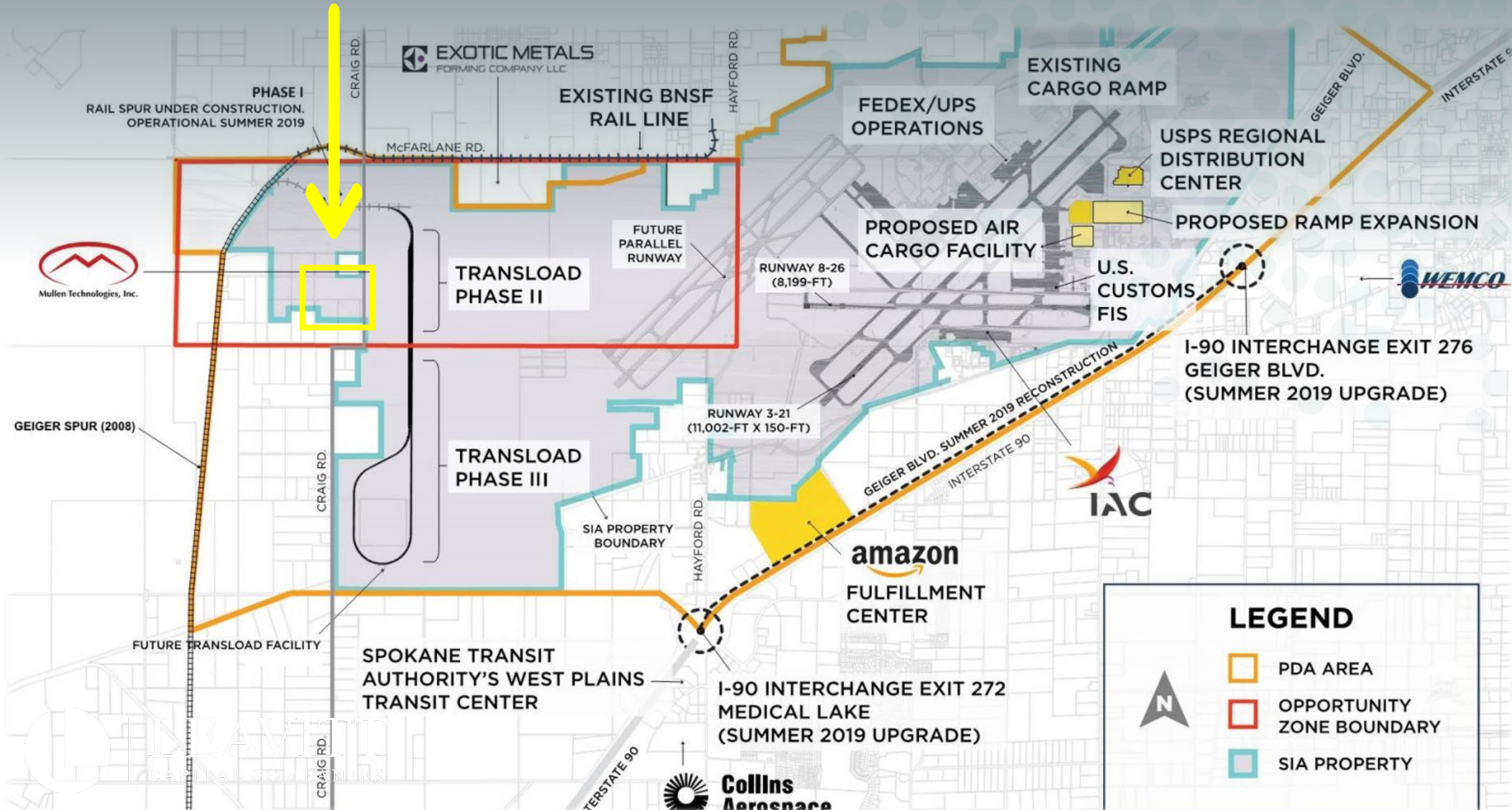









# Craig Road Opportunity

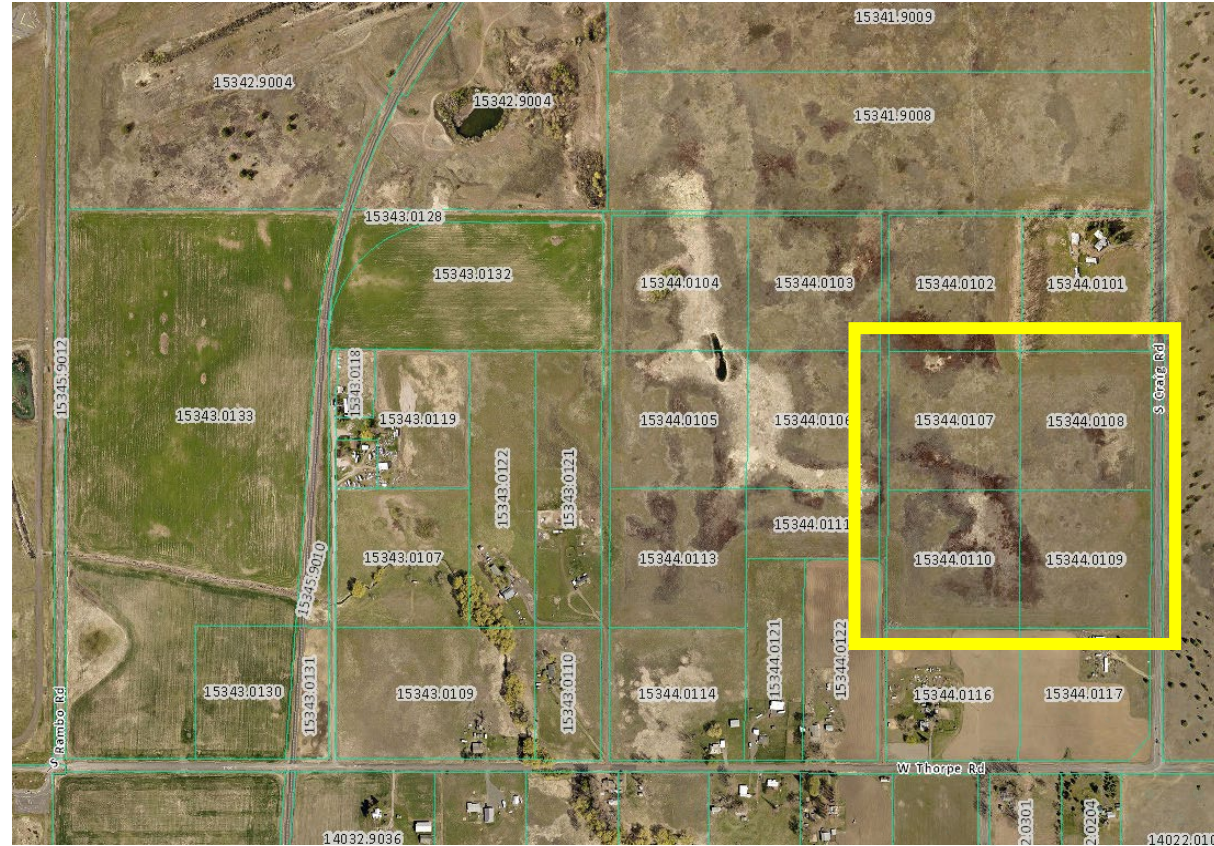
# BTS and Land Lease Opportunity



# Craig Road Opportunity

## PROPERTY DETAILS

 <b>RATE</b>	Contact Broker
 <b>ZONE</b>	LI - Light Industrial
 <b>SIZE</b>	38.46 Acres
 <b>ADDRESS</b>	S. Craig Rd, Medical Lake, WA 99022
 <b>PARCELS</b>	15344.0107 (9.49 ac), 0108 (9.54 ac), 0109 (9.54 ac), 0110 (9.69 ac)
 <b>WETLANDS ASSESSMENT</b>	No wetlands detected per report
 <b>UTILITIES</b>	Utilities stubbed to site



All information furnished regarding this property for sale or lease is from sources deemed reliable, but no warranty or representation is made to the accuracy thereof and same is submitted subject to errors, omissions, change of price, rental or other conditions prior to sale, lease or withdrawal without notice.

# Craig Road Opportunity

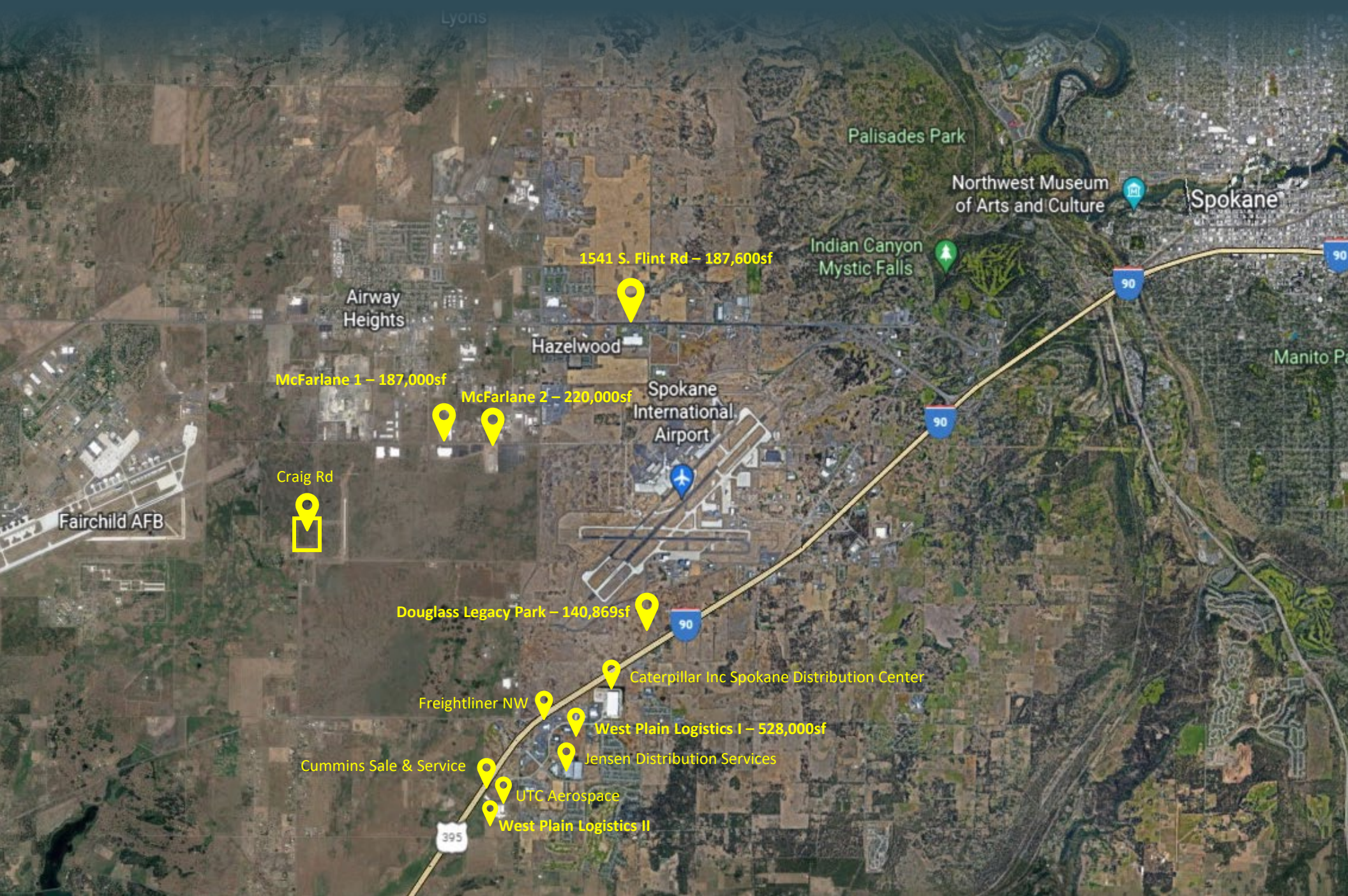
- COEUR D'ALENE, ID +/- 40 MILES
- MISSOULA, MT +/- 200 MILES
- SEATTLE, WA +/- 275 MILES
- BOISE, ID +/- 400 MILES



**LOCATION INFORMATION**

Spokane is a growing industrial hub servicing Eastern Washington, North Idaho, and Western Montana. The property is located east of downtown next to the Spokane International Airport, within the Spokane Qualified Opportunity Zone.

# Craig Road Opportunity



- 1541 S. Flint Rd – 187,600sf
- McFarlane 1 – 187,000sf
- McFarlane 2 – 220,000sf
- Craig Rd
- Douglass Legacy Park – 140,869sf
- Caterpillar Inc Spokane Distribution Center
- Freightliner NW
- West Plain Logistics I – 528,000sf
- Jensen Distribution Services
- Cummins Sale & Service
- UTC Aerospace
- West Plain Logistics II