

**GENERAL NOTES - PLAN**

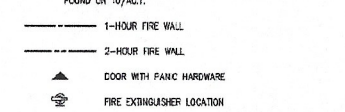
1. REFER TO SHEET A0.1 FOR PROJECT INFORMATION
2. REFER TO SHEET A0.2 FOR CODE ANALYSIS AND ADDITIONAL LIFE SAFETY GENERAL NOTES
3. REFER TO SHEET A0.3 FOR ACCESSIBILITY STANDARDS
4. REFER TO SHEET A0.4 FOR STAIRWAY MOUNTING HEIGHTS
5. REFER TO SHEET A0.5 FOR PARTITION TYPES
6. REFER TO SHEET A0.6 FOR FINISH SCHEDULES, MATERIALS AND LEGEND
7. REFER TO SHEET A0.7 FOR DOOR SCHEDULES, HARDWARE, TYPES, SCHEDULES AND ELEVATIONS
8. REFER TO SHEET A0.8 FOR WINDOW AND LOUVER TYPES, AND ELEVATIONS
9. REFER TO SHEET A0.9 FOR SIGNAGE STANDARDS
10. REFER TO SHEET A1.1 FOR SITE PLANS AND DETAILS
11. REFER TO SHEET A2.1 FOR FLOOR PLAN
12. REFER TO SHEET A3.1 FOR BUILDING ELEVATIONS
13. REFER TO SHEET A5.2.4 FOR DETAILS
14. REFER TO SHEET A6.1 FOR INTERIOR ELEVATIONS
15. REFER TO SHEET A6.1 FOR RECALCULATED JOIST PLAN
16. REFER TO SHEET A9.1 FOR FURTHER INFORMATION AND OUTLINE SPECIFICATIONS
17. ALL DIMENSIONS ARE TO FACE OF G.P., B.C., O.M.L. OR CENTERLINE OF COLUMN UNLESS OTHERWISE NOTED
18. REFER TO ARCHITECTURAL ELEVATIONS, DETAILS, AND SPECIFICATIONS FOR WALL FINISHES, LOCATION AND ARRANGEMENT
19. REFER TO ARCHITECTURAL AND STRUCTURAL DRAWINGS AND SPEC. FOR ALL FLOOR OPENINGS, DEPRESSIONS, WALL FRAMING, SUSPENSION SYSTEMS, ETC. TO APPLY MATERIAL FINISHES CALLED FOR IN SCHEDULE OR DETAILS
20. COORDINATE SIZE AND LOCATION OF ALL FLOOR OPENINGS WITH EQUIPMENT MANUFACTURER REQUIREMENTS
21. REFER TO ARCHITECTURAL INTERIOR ELEVATIONS AND RECALCULATED CEILING PLANS, AND FINISH SCHEDULE FOR CEILING HEIGHTS AND FINISHES
22. PROVIDE TREATED WOOD BLOCKING AT ALL MILLWORK & TOILET ACCESSIBLES AS REQUIRED
23. VERIFY ALL MECHANICAL, ELECTRICAL, LIGHTING AND PLUMBING FITTINGS, LOCATIONS WITH ALL ARCHITECTURAL, STRUCTURAL, & MECHANICAL/ELECTRICAL PLUMBING DRAWINGS AND SPECIFICATIONS
24. ALL PENETRATIONS THROUGH INTER PARTITIONS AND CEILING ABOVE MECHANICAL SHALL RECEIVE APPROPRIATE TAPE, ETC.

**TOILET ACCESSORIES LEGEND**

- TA-1 GLASS MIRROR WITH STAINLESS STEEL ANGLE FRAME RE: ELEV. FOR SIZE
- TA-2 GRAB BAR 42" NOTE: THE GRAB BARS STRUCTURAL STRENGTH AND MOUNTING DEVICE SHALL WITHSTAND MIN. 250 LBS FORCE
- TA-3 GRAB BAR 36" NOTE: THE GRAB BARS STRUCTURAL STRENGTH AND MOUNTING DEVICE SHALL WITHSTAND MIN. 250 LBS FORCE
- TA-4 SURFACE MOUNTED REEL TOILET TISSUE DISPENSER
- TA-5 ALL NET WALLS SHALL BE SHEATHED IN A 45' A.F.F. WATERPROOF WANSKOTT PER ELEVATIONS, FINISH SCHEDULE AND SPECIFICATIONS

**LIFE SAFETY NOTES & LEGEND**

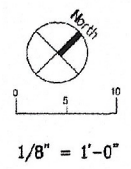
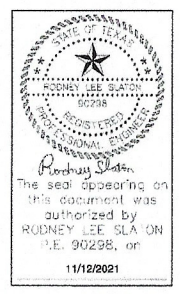
1. REFERENCE CODES: ALL WORK SHALL CONFORM TO ALL APPLICABLE BUILDING CODES, STANDARDS, REGULATIONS, AND OTHER SUPPLEMENTAL AMENDMENTS RELATED TO THE JURISDICTIONS OF THE PROJECT IN THEIR LATEST AND MOST RECENT ADOPTED EDITIONS, AND EFFECTIVE DATES.
2. MAXIMUM EXPOSURE PATH AND TOTAL EXIT DISTANCE CAN BE FOUND ON 02/AC/L1.



**TRINITY BAY ENGINEERING**  
 PLANNING-ENGINEERING-MANAGEMENT  
 911 S. 8th STREET  
 LA PORTE, TEXAS 77571  
 CELL 281-827-3929  
 E-MAIL: rodney@trinitybayengineering.com

TBPE # 18351

REVISIONS	DATE



**01 FIRST FLOOR PLAN, LIFE STAFETY and SCHEMATIC ROOF PLAN**

PROJECT TITLE  
**PROGRESSIVE DIESEL**  
 320 EAST OLIVE STREET  
 LEANOR CITY, TEXAS

PROJECT NO.  
 2009PROGRESSIVE

SCALE  
 AS SHOWN

DATE  
**A2.1**