



7650 McEwen Road

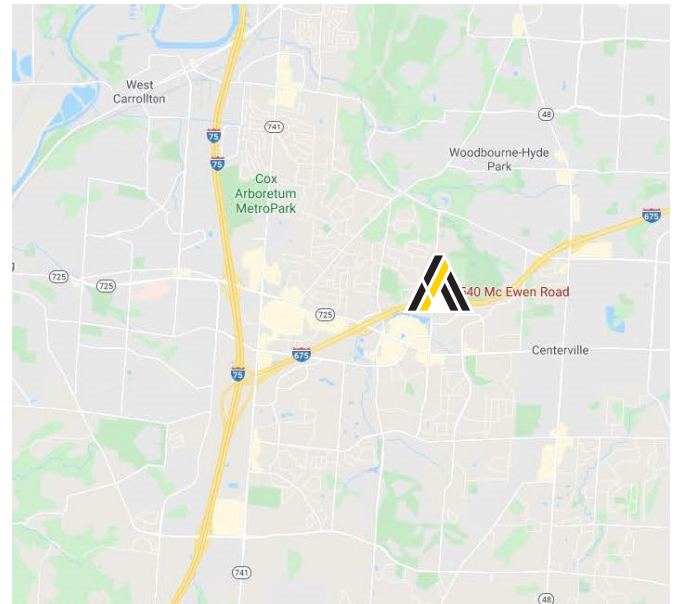
Washington Township, Ohio 45459

LEASE RATE:

\$6.95 PSF NNN

Property Highlights

- 5,480± SF Total
- 1,488± SF Office
- 3,992± SF Warehouse
- 1 Drive-in ramp (9' x 10')
- 1 Platform dock
- 100% Air conditioned
- LED lights
- Kitchenette
- Park like setting property located near I-675
- No city income tax!



Wade Elliott, SIOR

Vice President

937.469.8270

Wade.Elliott@ApexCommercialGroup.com



Alex Nikolai

Senior Associate

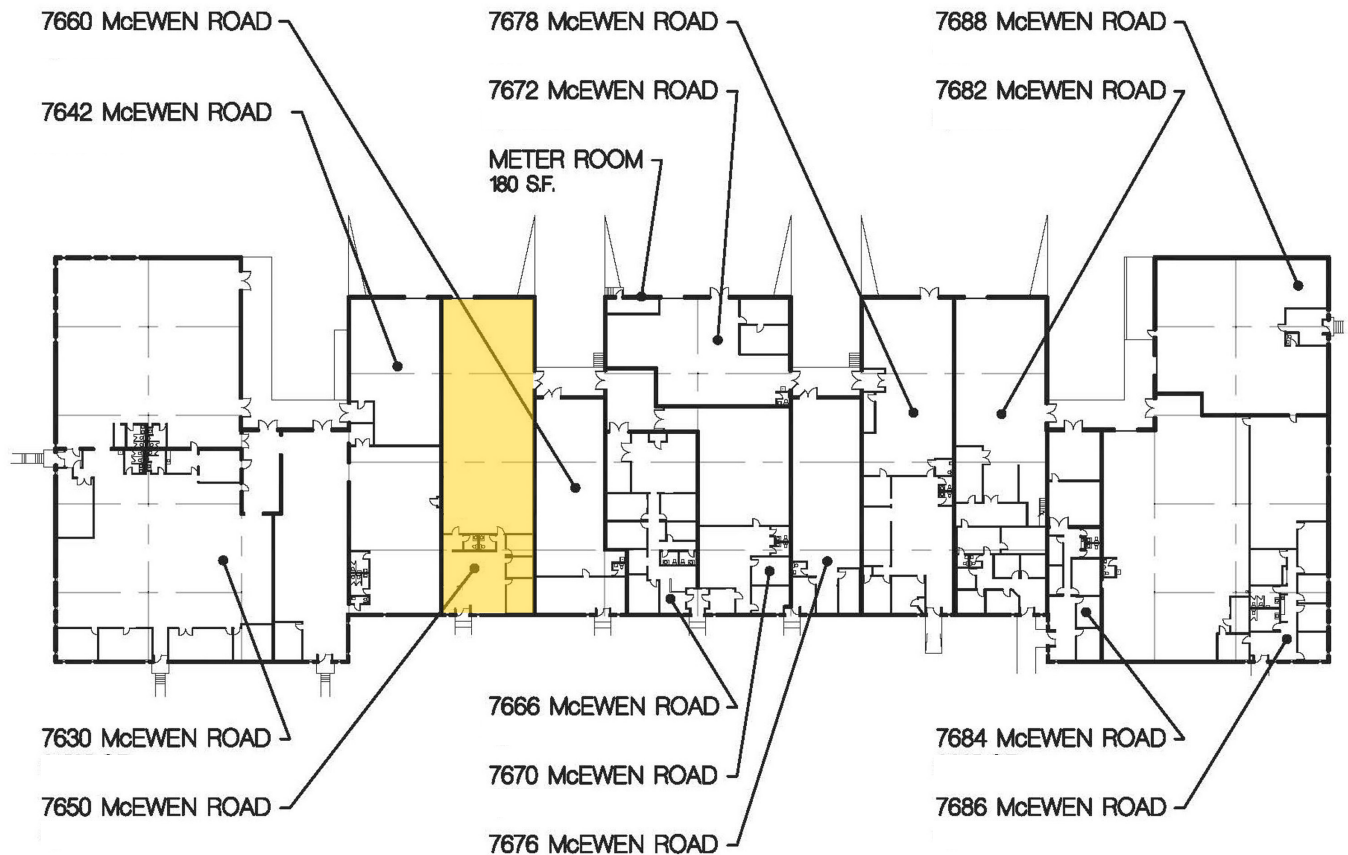
937.222.7884

Alex.Nikolai@ApexCommercialGroup.com

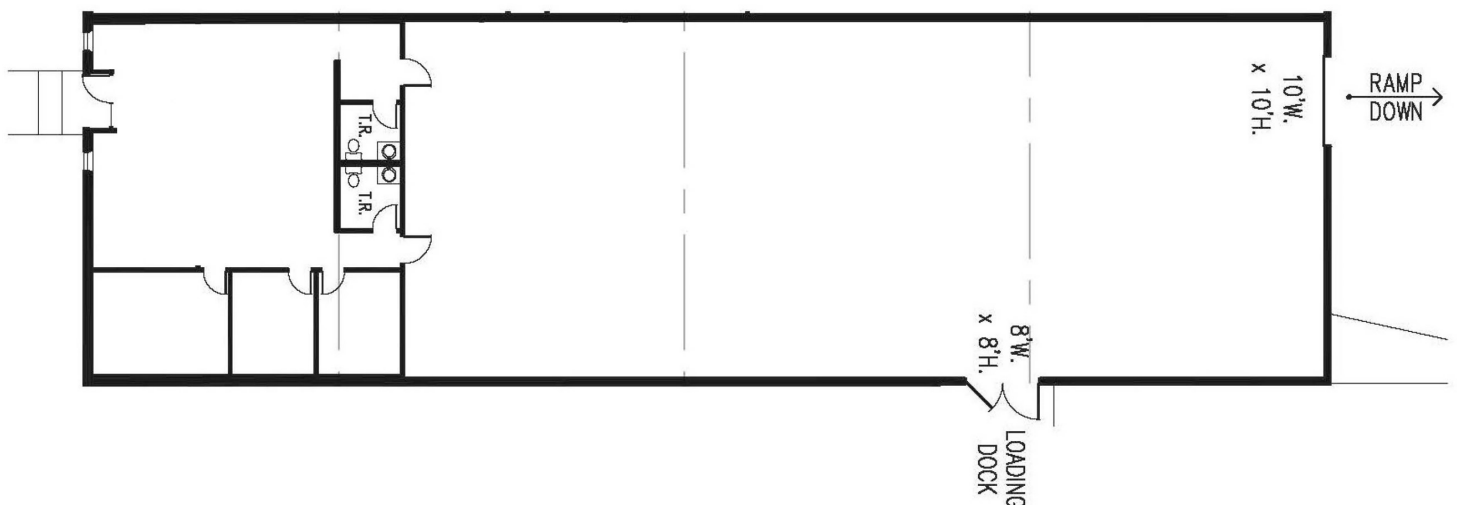
7650 McEwen Road

Washington Township, Ohio 45459

Building Plan



Floor Plan



ApexCommercialGroup.com