

# FOR LEASE Front Office / Engineering Space

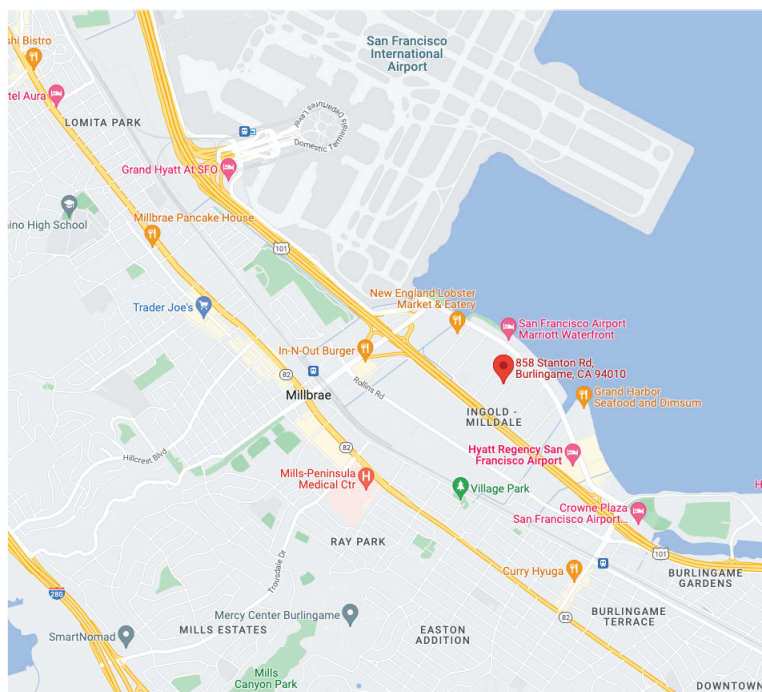
**AVAILABLE NOW!**

858 Stanton Road, Burlingame, CA 94010



## Building Details

- Available Area: ±6,443 SF
  - ±4,000 Ground Floor
  - ±2,443 Upstairs
- Asking Rent: \$1.90 NNN PSF Per Month
- \$0.50 PSF/MO Estimated OPEX
- Building Size: ±15,708 SF
- Lot Size: ±30,492
- 2 Stories
- New HVAC
- 12 Parking Spaces
- 4 Bathrooms (1 with shower)
- Power: 400AMP 3-Phase, 110V and 220V, up to 600AMP
- Kitchen with Refrigerator, Dishwasher and Sink
- Quick Access to Highway 101, about 10 minutes to San Francisco International Airport, Millbrae and Downtown Burlingame.
- [Zoning: I/I \(Innovation Industrial\)](#)



## Contact Agents for More Details



### ANDREW PECEIMER

Senior Commercial Real Estate Advisor

DRE # 00993289

M: 650.208.4971

O: 650.344.4300

[apeceimer@cbc Burlingame.com](mailto:apeceimer@cbc Burlingame.com)



### GARRETT SWARTZ

Commercial Real Estate Advisor

DRE # 02178894

M: 925.222-0933

O: 650.352.3302

[gswartz@cbc Burlingame.com](mailto:gswartz@cbc Burlingame.com)



**COLDWELL BANKER  
COMMERCIAL**  
WESTBAY REAL ESTATE  
GROUP

1575 Bayshore Highway, Suite 100,  
Burlingame CA 94010

# FOR LEASE Front Office / Engineering Space

**AVAILABLE NOW!**

858 Stanton Road, Burlingame, CA 94010

## Interior Photos:



## Contact Agents for More Details



### ANDREW PECEIMER

Senior Commercial Real Estate Advisor

DRE # 00993289

M: 650.208.4971

O: 650.344.4300

[apeceimer@cbcburlingame.com](mailto:apeceimer@cbcburlingame.com)



### GARRETT SWARTZ

Commercial Real Estate Advisor

DRE # 02178894

M: 925.222-0933

O: 650.352.3302

[gswartz@cbcburlingame.com](mailto:gswartz@cbcburlingame.com)



**COLDWELL BANKER  
COMMERCIAL**  
WESTBAY REAL ESTATE  
GROUP

1575 Bayshore Highway, Suite 100,  
Burlingame CA 94010

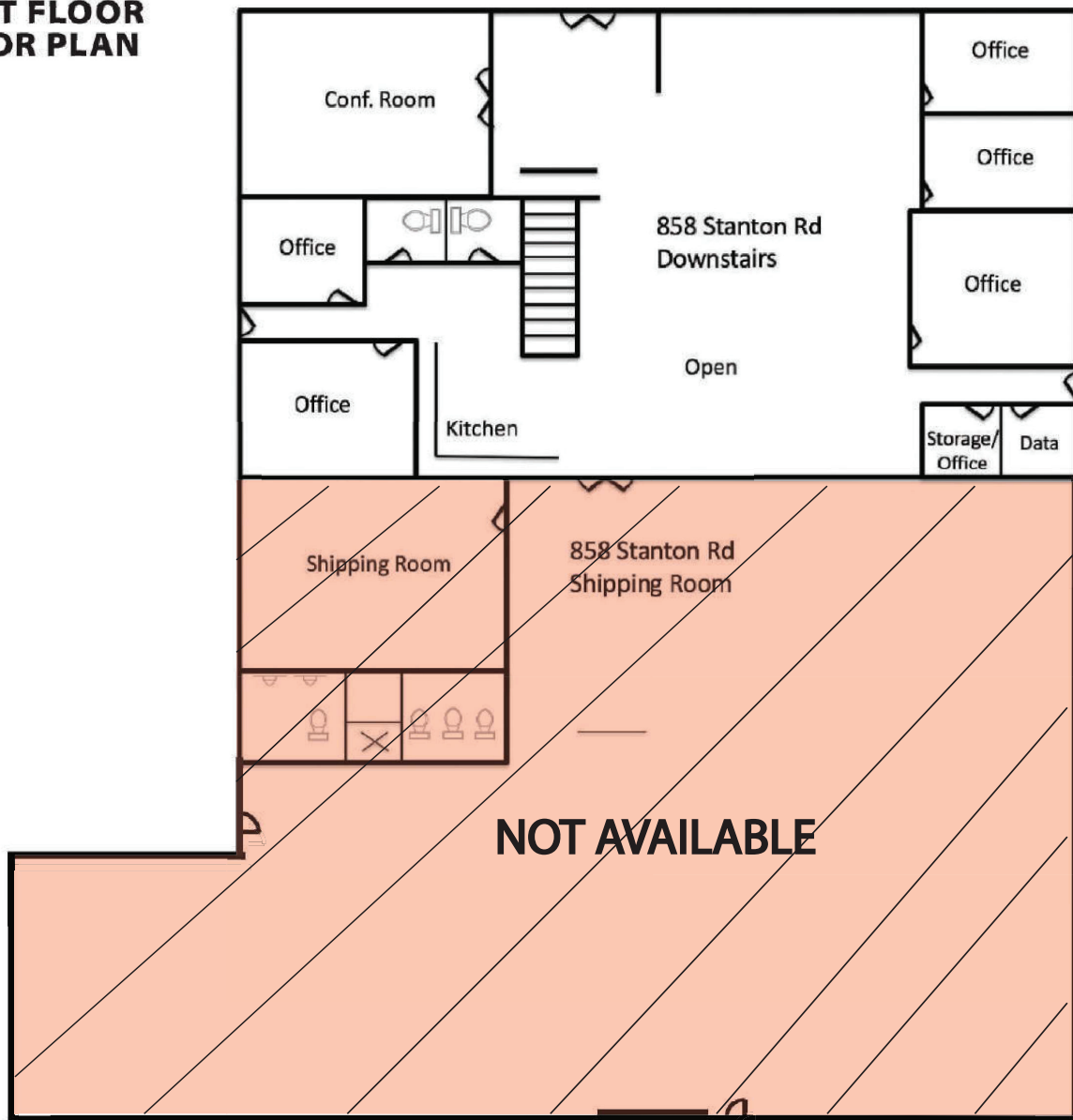


# FOR LEASE Front Office / Engineering Space

**AVAILABLE NOW!**

858 Stanton Road, Burlingame, CA 94010

## FIRST FLOOR FLOOR PLAN



\*Floor Plan Not To Scale

## Contact Agents for More Details



### ANDREW PECEIMER

Senior Commercial Real Estate Advisor

DRE # 00993289

M: 650.208.4971

O: 650.344.4300

apeceimer@cbcburlingame.com



### GARRETT SWARTZ

Commercial Real Estate Advisor

DRE # 02178894

M: 925.222-0933

O: 650.352.3302

gswartz@cbcburlingame.com



**COLDWELL BANKER  
COMMERCIAL**  
WESTBAY REAL ESTATE  
GROUP

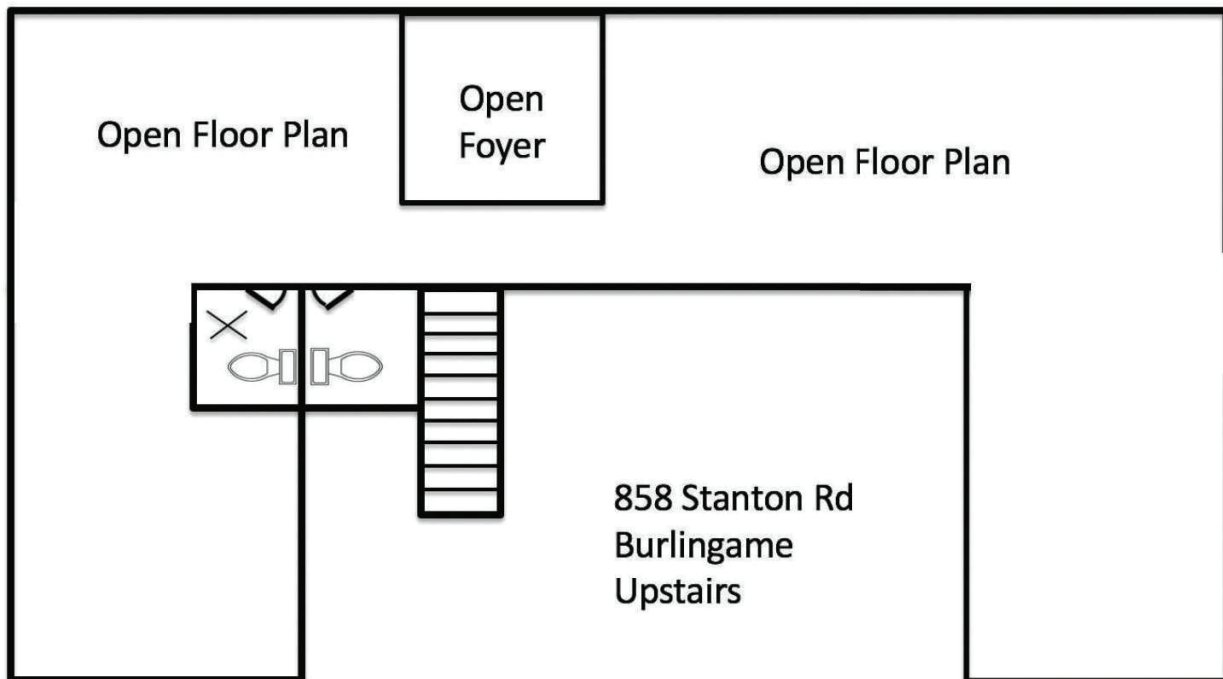
1575 Bayshore Highway, Suite 100,  
Burlingame CA 94010

# FOR LEASE Front Office / Engineering Space

**AVAILABLE NOW!**

858 Stanton Road, Burlingame, CA 94010

## SECOND FLOOR FLOOR PLAN & PHOTOS



\*Floor Plan Not To Scale

## Contact Agents for More Details



### ANDREW PECEIMER

Senior Commercial Real Estate Advisor

DRE # 00993289

M: 650.208.4971

O: 650.344.4300

[apecaimer@cbcburlingame.com](mailto:apecaimer@cbcburlingame.com)



### GARRETT SWARTZ

Commercial Real Estate Advisor

DRE # 02178894

M: 925.222-0933

O: 650.352.3302

[gswartz@cbcburlingame.com](mailto:gswartz@cbcburlingame.com)



**COLDWELL BANKER  
COMMERCIAL**  
WESTBAY REAL ESTATE  
GROUP

1575 Bayshore Highway, Suite 100,  
Burlingame CA 94010