

# VACANT LAND FOR SALE

1520 N. Haverhill Road • West Palm Beach • FL



## PROPERTY HIGHLIGHTS

- ±0.67 acres (29,214 sf) on Haverhill Road just South of Okeechobee Boulevard
- Previous Site Plan approved for a medical facility up to 2,999 sf (see Page 2 and 3)
- Previous Site Plan approved for five (5) 2,400 sf townhomes (see Page 4)
- Land use – Multi-family, Medical, Daycare and Veterinary
- Zoning – CLO (office), formerly RH (multi-family)
- All clean and waste water underground utilities completed onto property including fire hydrant and manholes
- Sale Price: \$500,000.00

## PARCEL BOUNDARY MAP

PCN: 00-42-43-25-35-001-0000



Murray Brown, Broker Assoc.  
561.776.9300  
MB@assetspecialists.com



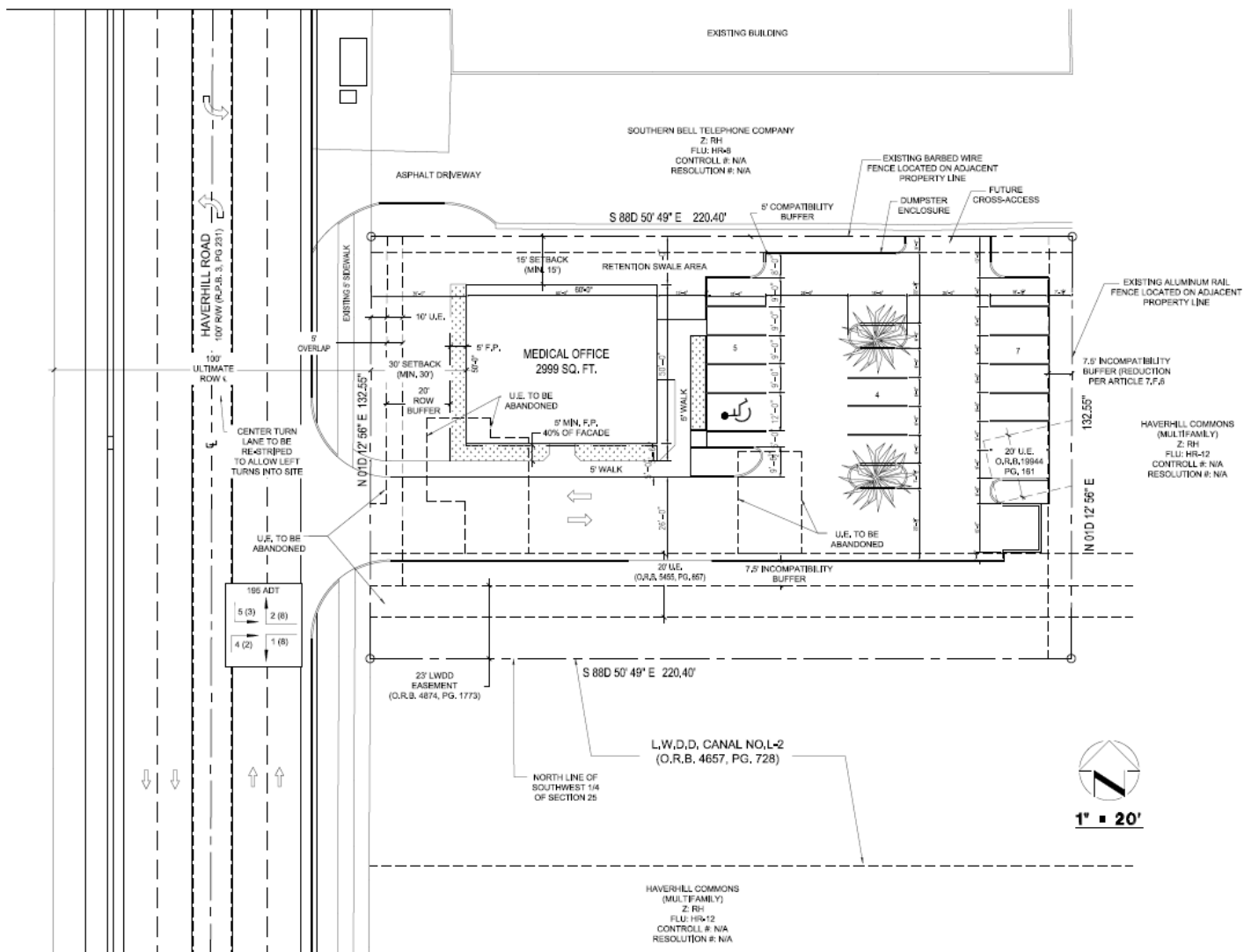
ASSET  
SPECIALISTS, INC.

Asset Specialists, Inc.  
3710 Buckeye Street • Suite 100  
Palm Beach Gardens, FL 33410



# MEDICAL SITE PLAN

## 2,999 Square Foot Medical Office

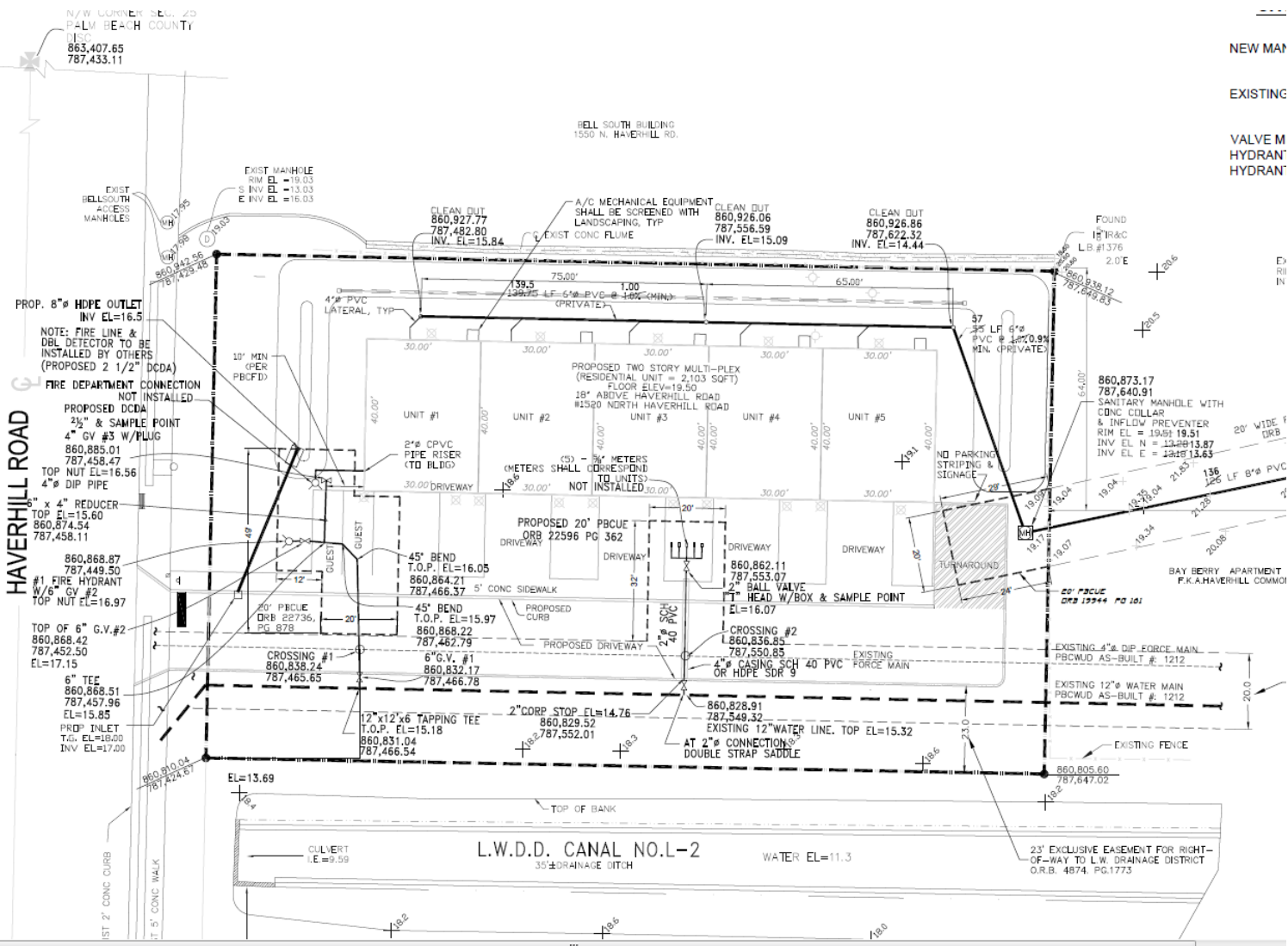






# TOWNHOME SITE PLAN

## Five (5) 2,400 sf, two-story townhomes with 3ba/2.5br/2 car garage



# COMMERCIAL REAL ESTATE SERVICES



BRINGING THE  
**RIGHT PEOPLE TOGETHER**  
AT THE **RIGHT TIME.**

EXCEPTIONALLY  
**NETWORKED.**  
A **UNIQUE ADVANTAGE.**



**ASSET**  
SPECIALISTS, INC.

3710 Buckeye Street • Suite 100 • Palm Beach Gardens • FL • 33410  
Murray Brown, Broker Associate • 561.776.9300 • MB@assetspecialists.com  
www.AssetSpecialists.com