

FOR LEASE

# TRENTON BUSINESS CENTER

6105

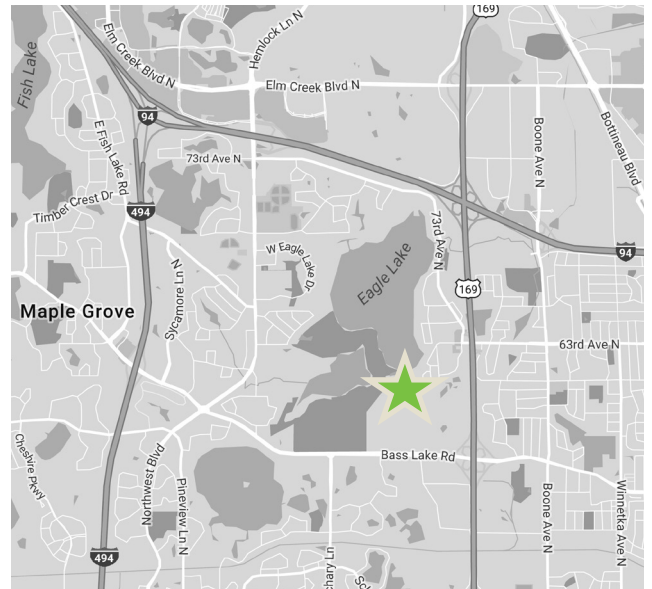
TRENTON LANE NORTH

Plymouth, MN



## PROPERTY FEATURES

- + Single tenant office/warehouse building located in Bass Creek business park in Plymouth
- + Amenities include conference and training rooms, passenger elevator, cafeteria, and employee fitness center
- + Built in 1994; situated on 12 acres
- + Quick, direct access from Hwy 169, west on Bass Lake Road and just blocks north on Nathan Lane North



## CONTACT US

### JOHN RYDEN

Senior Vice President  
+1 952 924 4641  
john.ryden@cbre.com

### MATT OELSCHLAGER

Senior Vice President  
+1 952 924 4848  
matt.oelschlager@cbre.com

### MIKE BOWEN

Vice President  
+1 952 924 4885  
mike.bowen@cbre.com

### JP MALONEY

Associate  
+1 612 336 4288  
jp.maloney@cbre.com

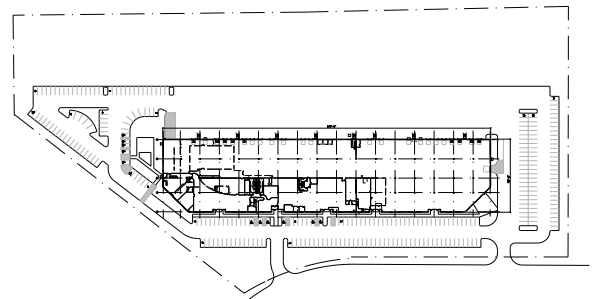
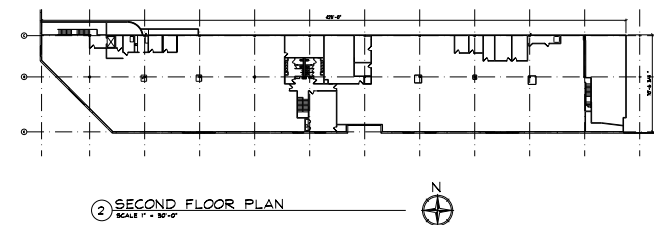
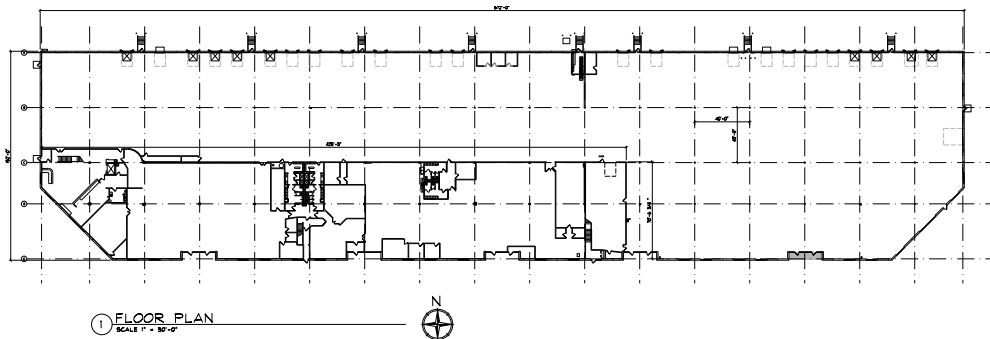
[www.cbre.com/minneapolis](http://www.cbre.com/minneapolis)

**CBRE**

# FOR LEASE TRENTON BUSINESS CENTER

6105  
TRENTON LANE  
NORTH  
Plymouth, MN

<b>Total Building SF</b>	122,032 SF	<b>Lighting</b>	LED
<b>Office SF</b>	54,158 SF 27,405 SF Main Level 26,753 SF 2nd Floor	<b>Power</b>	1200A, 480V, 3PH
<b>Warehouse SF</b>	67,874 SF (100% A/C)	<b>Sprinklered</b>	ESFR
<b>Loading</b>	23 dock doors (8'x10') 1-(10x10) 1 drive-in door (14'x12')	<b>Parking</b>	281 (2.3/1000)
<b>Clear Height</b>	24'	<b>Lease Rates</b>	\$4.75/\$8.75 PSF
<b>Column Spacing</b>	40' x 40'	<b>2019 Est. Expenses</b>	\$2.99 Total (\$1.93 PSF Taxes/\$1.06 PSF CAM)



© 2019 CBRE, Inc. All rights reserved. This information has been obtained from sources believed reliable, but has not been verified for accuracy or completeness. You should conduct a careful, independent investigation of the property and verify all information. Any reliance on this information is solely at your own risk. CBRE and the CBRE logo are service marks of CBRE, Inc. All other marks displayed on this document are the property of their respective owners, and the use of such logos does not imply any affiliation with or endorsement of CBRE. Photos herein are the property of their respective owners. Use of these images without the express written consent of the owner is prohibited.