

# RARE MEDICAL / OFFICE SUBLEASE

7,915 SF | Available Now

- Move-in ready space
- Former chiropractic suite
- Term through 2/28/27

**1 Baltimore Pl NW, Suite 100**







## OVERVIEW



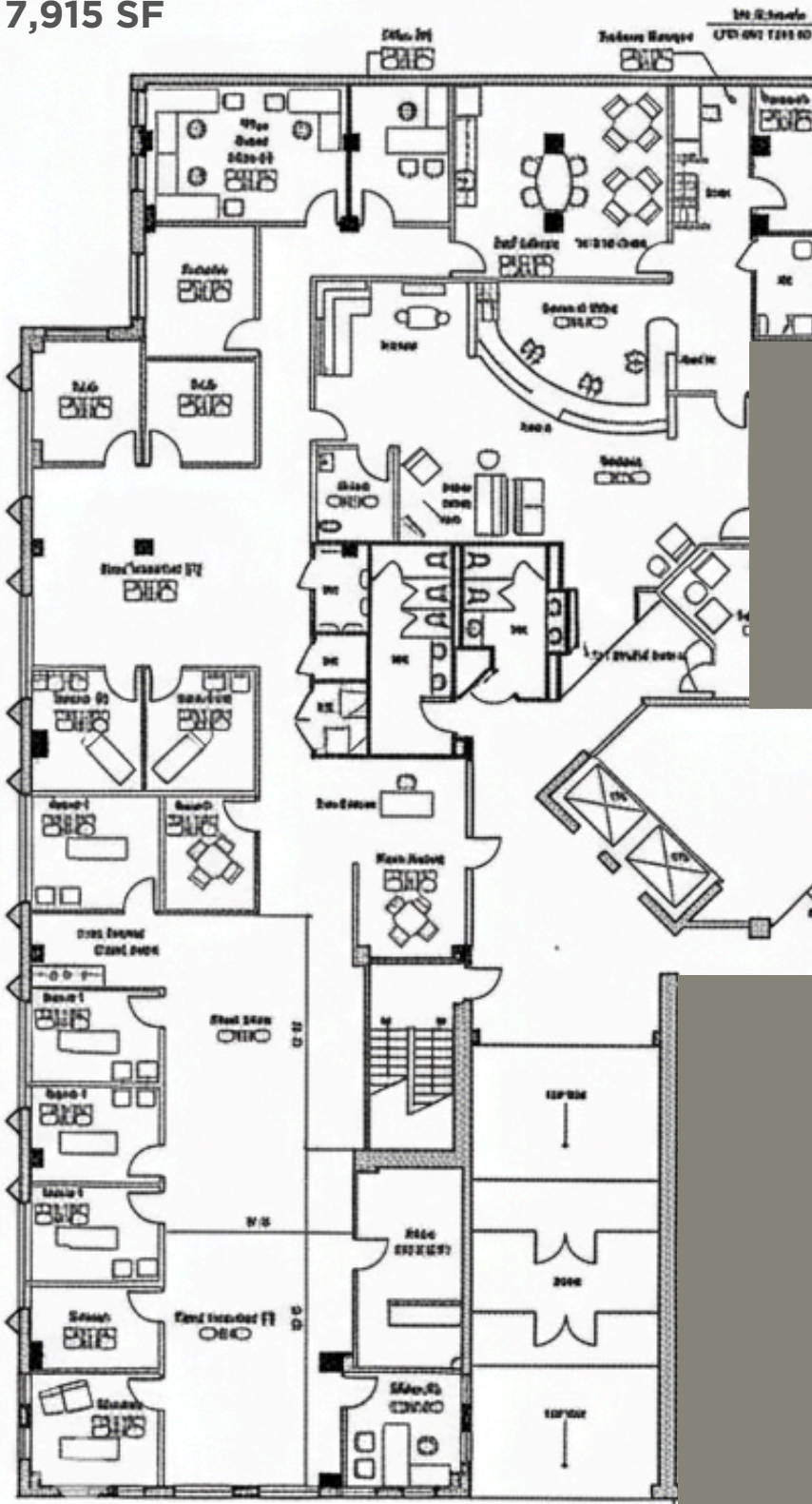
## FEATURES

- ✓ Modern medical/office space in a historic building
- ✓ Immediate access to I-75/I-85
- ✓ Move-in ready 2<sup>nd</sup> gen condition
- ✓ On-site property management and 24-hour security

## INQUIRE NOW

-  (404) 400-6633   
  [ellis.murray@capitalre.com](mailto:ellis.murray@capitalre.com)  
 (404) 668-2881   
  [garrett.utt@capitalre.com](mailto:garrett.utt@capitalre.com)

7,915 SF



## SPACE DETAILS

- **Former chiropractic** and holistic health suite
- Move-in ready **medical** or **office** space
- Up to **8 exam rooms** and **5 provider offices**
- Large **reception and waiting** area
- Medical features include **handwashing station** and **lead-lined X-ray room**
- Updated with **2 large conference or procedure** rooms
- Equipped with **2 break areas**

## INQUIRE NOW

(404) 400-6633    ellis.murray@capitalre.com

(404) 668-2881    garrett.utt@capitalre.com

