

Meadows & Ohly

*Medical
Space
Available*



Buckhead's Healthcare Hub

371 East Paces | Atlanta, GA

EXECUTIVE SUMMARY

Buckhead's Healthcare Hub

The Ultimate Boutique-Styled Medical/Office Space

Designed to emulate the lifestyle and affluence of Buckhead Atlanta—the city's most elite host for fine dining, shopping and entertainment. 371 boasts highly-efficient spaces and performance-driven services

- 7 floors of medical offices above 2 floors of retail & lobby areas
- 4.3/1,000 parking ratio
- Direct access from garage to first five floors
- 4 elevators: 3 passenger and 1 service



LOCATION HIGHLIGHTS

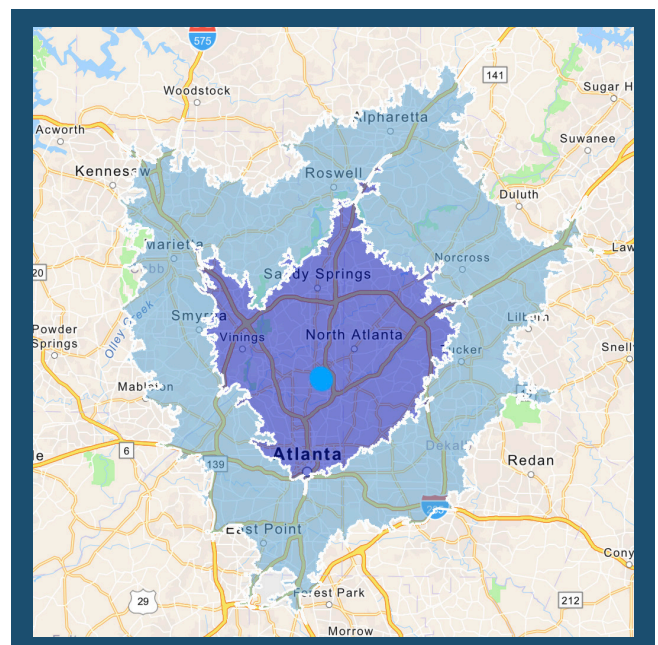
Diverse Tenancy With Two Ambulatory Surgery Centers

18 tenants with 12 different specialties including:

- Dermatology,
- Plastic Surgery,
- Primary Care,
- Oncology,
- OB/GYN,
- Orthopedics,
- Urology

On Site Amenities:

- Street-Level Retail
- 7 Level Parking Deck
- 4 Elevators
- Unmatched Accessibility Within The Amenity-Rich Buckhead Area

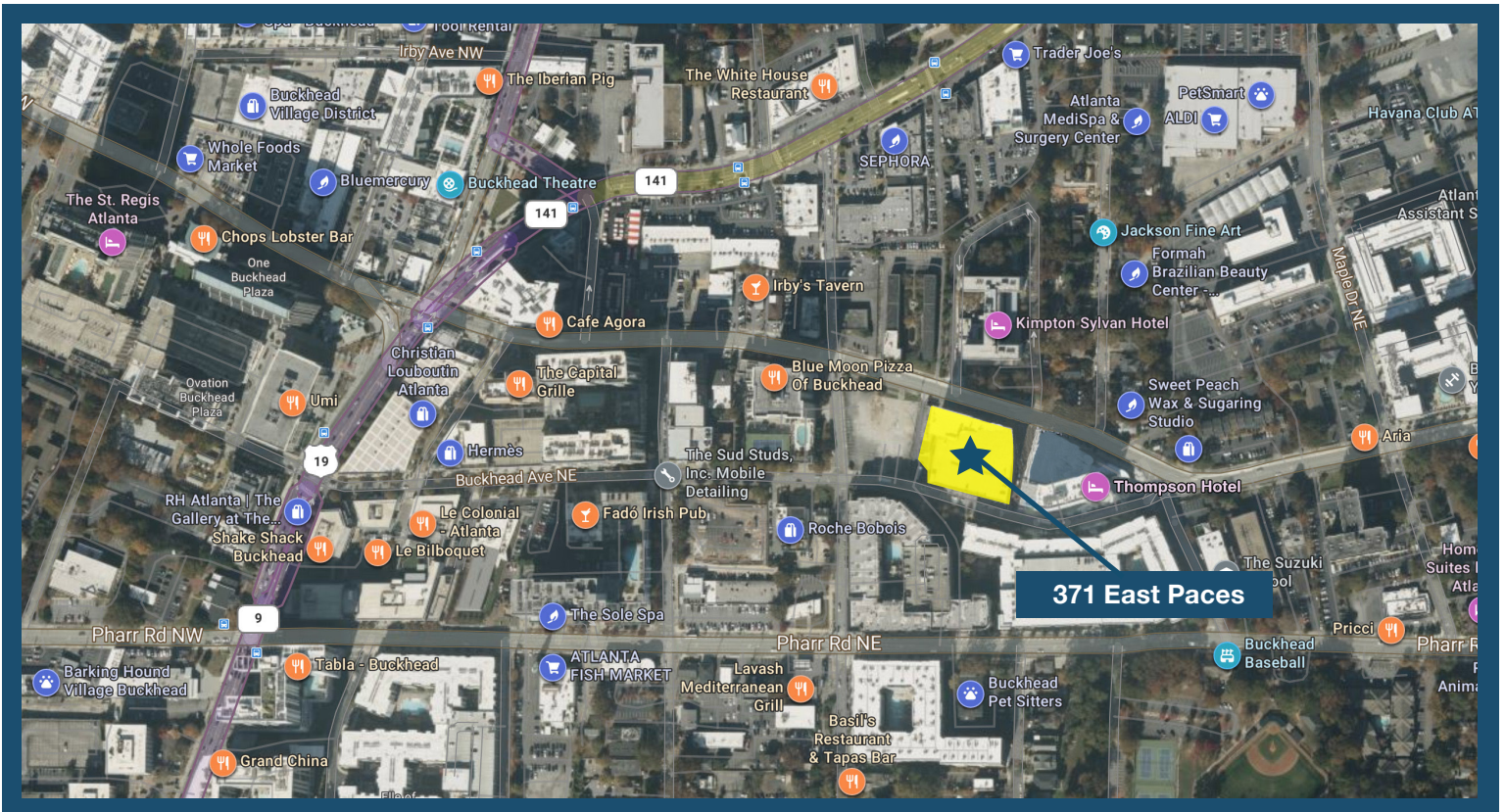


0 - 20 Minutes

20- 30 Minutes



LOCATION HIGHLIGHTS



Notable Points of Interest:

-  St. Regis Hotel
-  Buckhead Village District



Walkscore
92



New Units
9,000+



Amenities
350



Daytime Population
290,000+



Average HH Income
\$124,513



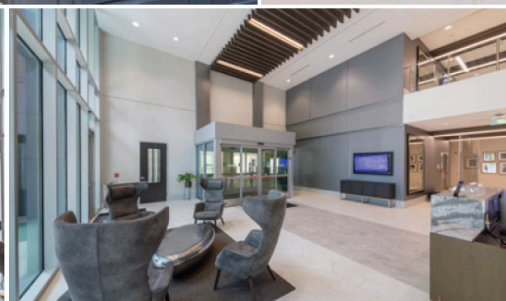
STACKING PLAN



- LEASED RETAIL
- AVAILABLE
- LEASED OFFICE



ADDITIONAL PHOTOS



Meadows & Ohly

For more information on the Buckhead Healthcare Hub opportunity, please contact:

George Olmstead

Senior Vice President, Brokerage Services

(470)-740-2791

george.olmstead@meadowsandohly.com

