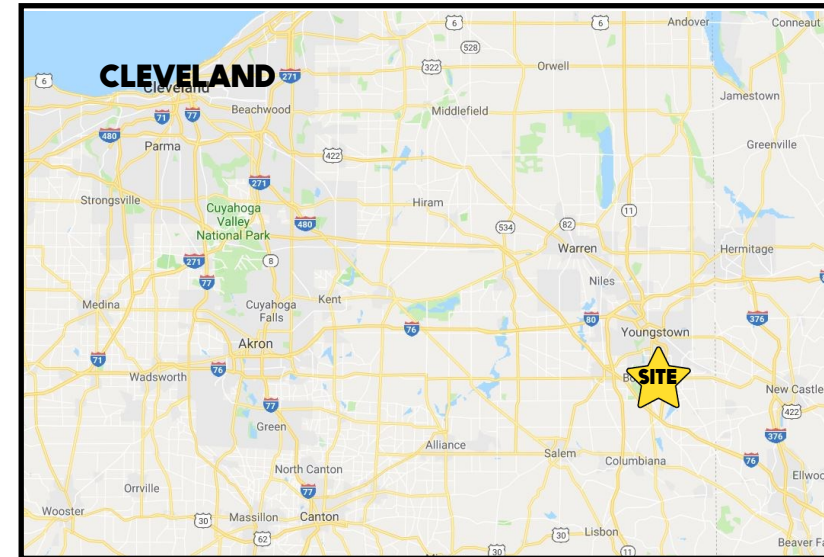


## LOCATION

112 Boardman Poland Rd, Boardman, OH 44512



## TRAFFIC

Boardman Poland Rd = 29,795 VPD

## HIGHLIGHTS

- Retail space on US 224, across from Southern Park Mall
- Glass storefront with front door parking
- High traffic counts, close to Market St (SR 7)
- Low vacancy with a good tenant mix
- Building and street signage

## CONTACT

### BILL KUTLICK

330.565.5701

bkutlick@platzrealtygroup.com

### MATT WILSON

330.347.9677

mwilson@platzrealtygroup.com

Office: 330.757.4889 | Fax: 330.294.5622 | 3830 Starr Centre Dr, Suite 2, Canfield, OH 44406

[www.PLATZREALTYGROUP.com](http://www.PLATZREALTYGROUP.com)





Office: 330.757.4889 | Fax: 330.294.5622 | 3830 Starr Centre Dr, Suite 2, Canfield, OH 44406

**[www.PLATZREALTYGROUP.com](http://www.PLATZREALTYGROUP.com)**

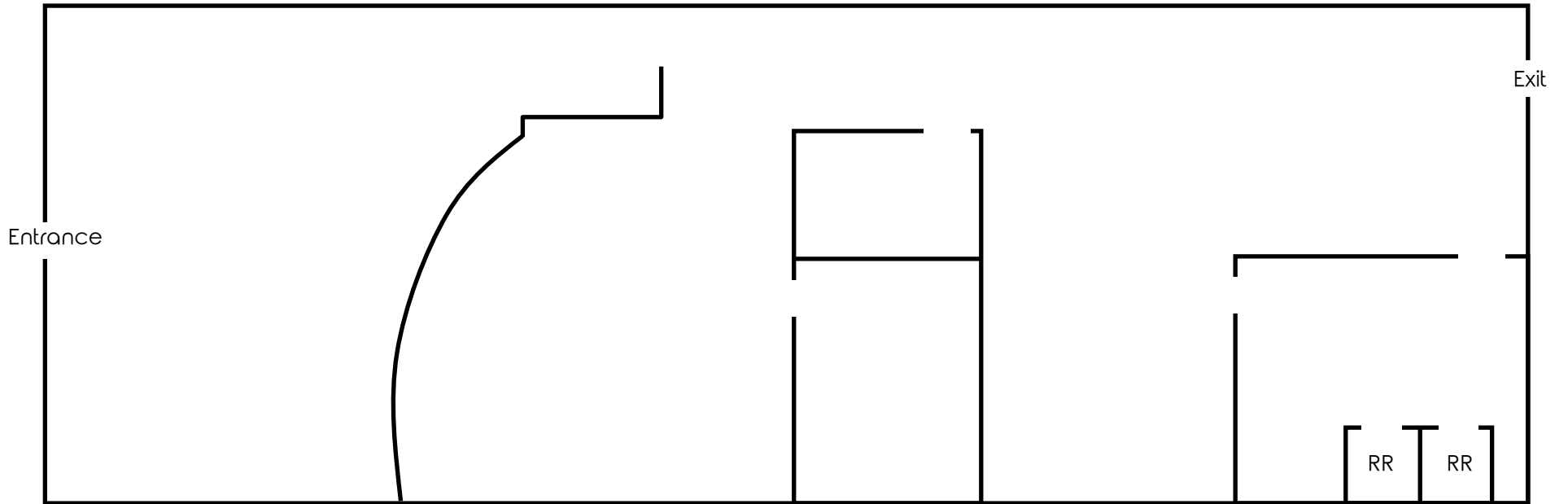
The information presented was obtained from sources believed to be true and reliable. The Platz Realty Group makes no warranties or guarantees to the accuracy of the information.





Office: 330.757.4889 | Fax: 330.294.5622 | 3830 Starr Centre Dr, Suite 2, Canfield, OH 44406

[www.PLATZREALTYGROUP.com](http://www.PLATZREALTYGROUP.com)



Office: 330.757.4889 | Fax: 330.294.5622 | 3830 Starr Centre Dr, Suite 2, Canfield, OH 44406

**[www.PLATZREALTYGROUP.com](http://www.PLATZREALTYGROUP.com)**

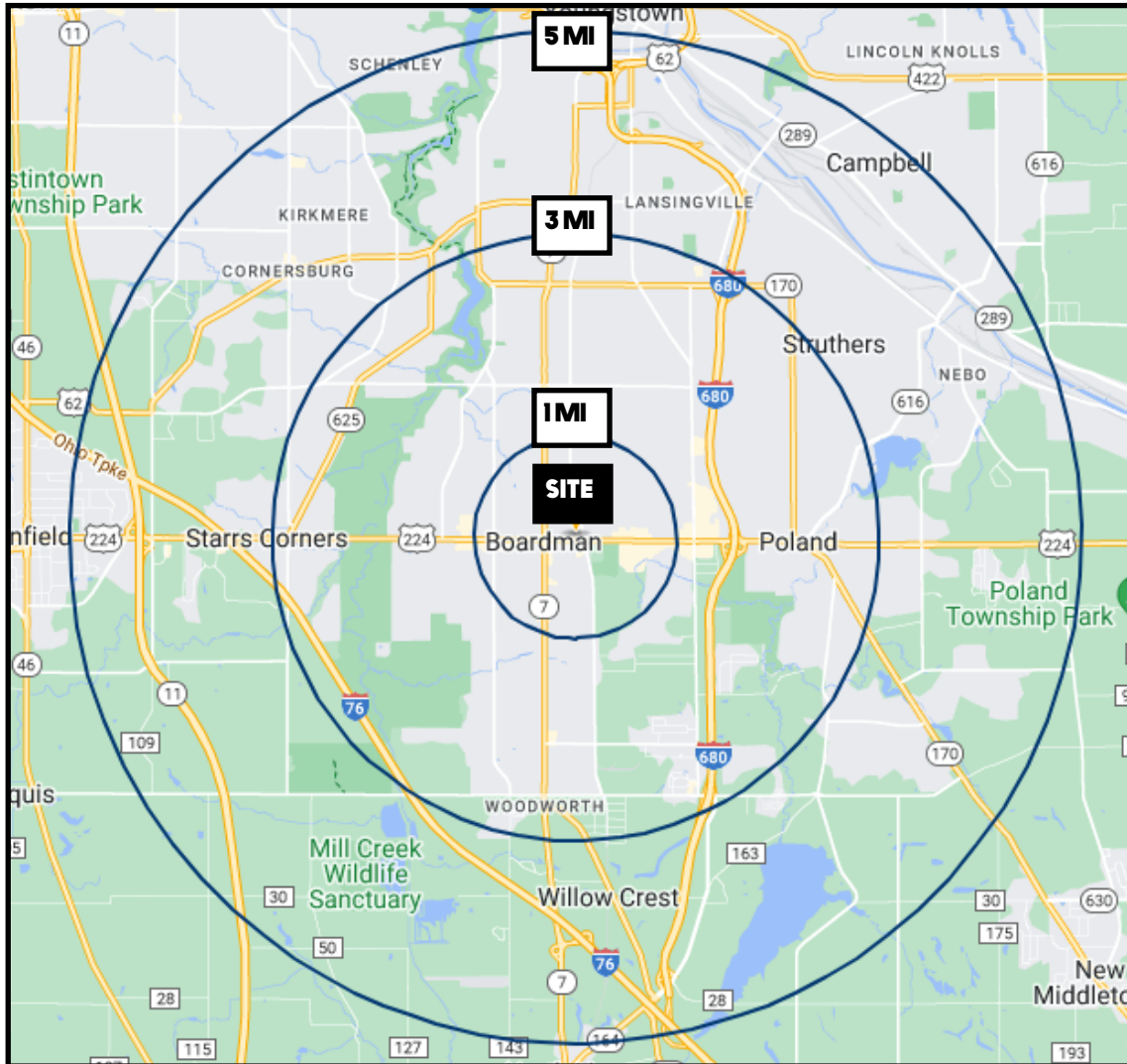




Office: 330.757.4889 | Fax: 330.294.5622 | 3830 Starr Centre Dr, Suite 2, Canfield, OH 44406

[www.PLATZREALTYGROUP.com](http://www.PLATZREALTYGROUP.com)





DEMOGRAPHICS	1 MI	3 MI	5 MI
<b>POPULATION</b>	6,874	55,104	111,157
<b>HOUSEHOLDS</b>	3,007	23,885	46,857
<b>MEDIAN AGE</b>	44	44	44
<b>AVERAGE HH INCOME</b>	\$68,825	\$70,092	\$67,840

**SITE INFORMATION**

<b>LOCATION</b>	Boardman Township Mahoning County
<b>SIZE</b>	Unit 112: 3,400 SF
<b>PROPERTY TYPE</b>	Retail
<b>ZONING</b>	GB
<b>YEAR BUILT</b>	1979
<b>UTILITIES</b>	Separately metered
<b>RENT</b>	\$11.00/SF
<b>NNN CHARGES</b>	\$3.00/SF

Office: 330.757.4889 | Fax: 330.294.5622 | 3830 Starr Centre Dr, Suite 2, Canfield, OH 44406