

For Sale

CBRE

# 415 South 200 East

Springville, UT

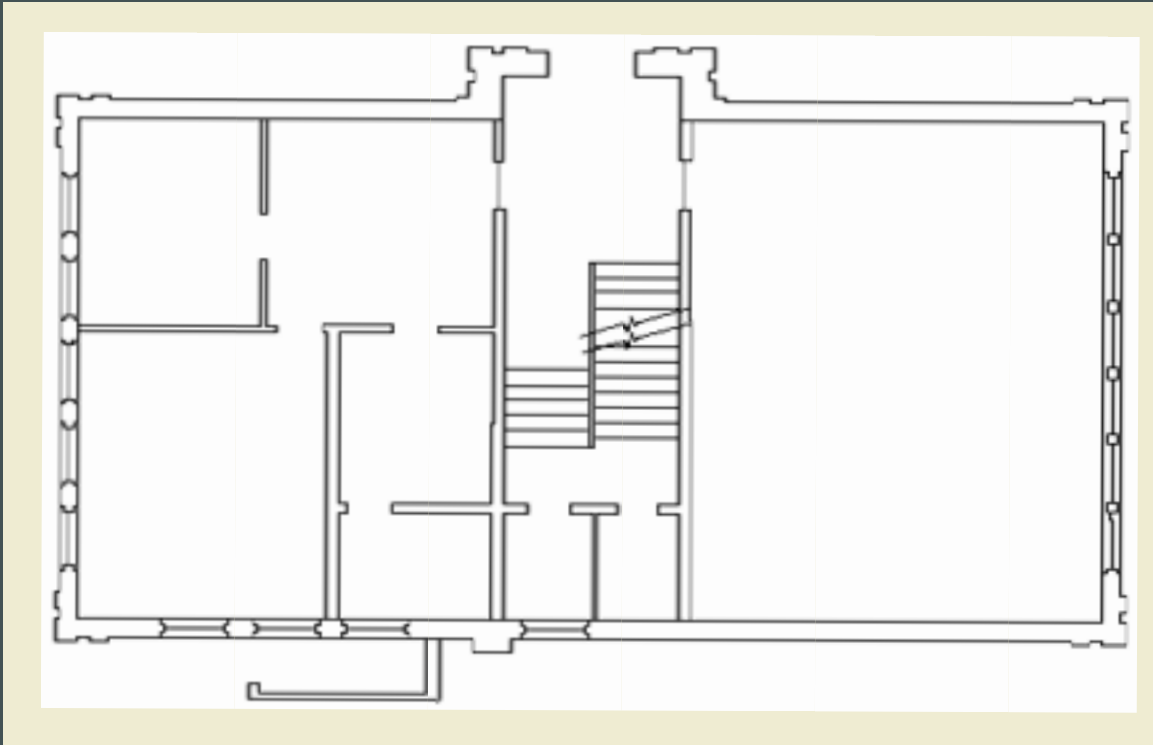
415 South 200 East  
Springville, Utah  
[www.cbre.com/slc](http://www.cbre.com/slc)

Historic Site Available

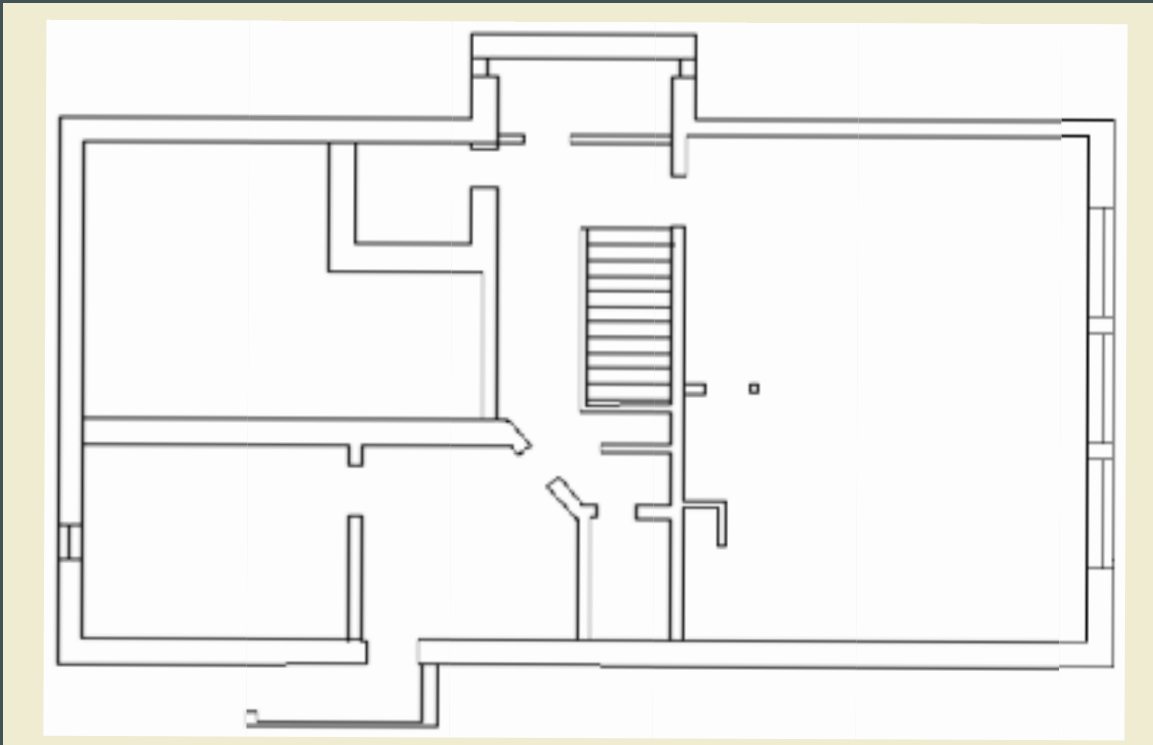


# Floorplans

## Main Floor



## Basement Level



# SP City

Special Zoning

# 0.12

Acres

# 1928

Year Built

## Property Information

Specifications	
Property Address	415 South 200 East
Municipality	Springville, Utah
List Price	\$425,000
Building Square Feet	3,384 approximate SF
Marketing Period	Mandatory Marketing Period Ends July 31, 2025
Zoning Code	SP City - Special Use, Historic Preservation
Zoning Description	Sale of this property is conditional to Seller's agreement to record historical preservation easement.
	<a href="#">VIEW EASMENT AGREEMENT</a>
Zoning and allowed uses must be confirmed with city.	

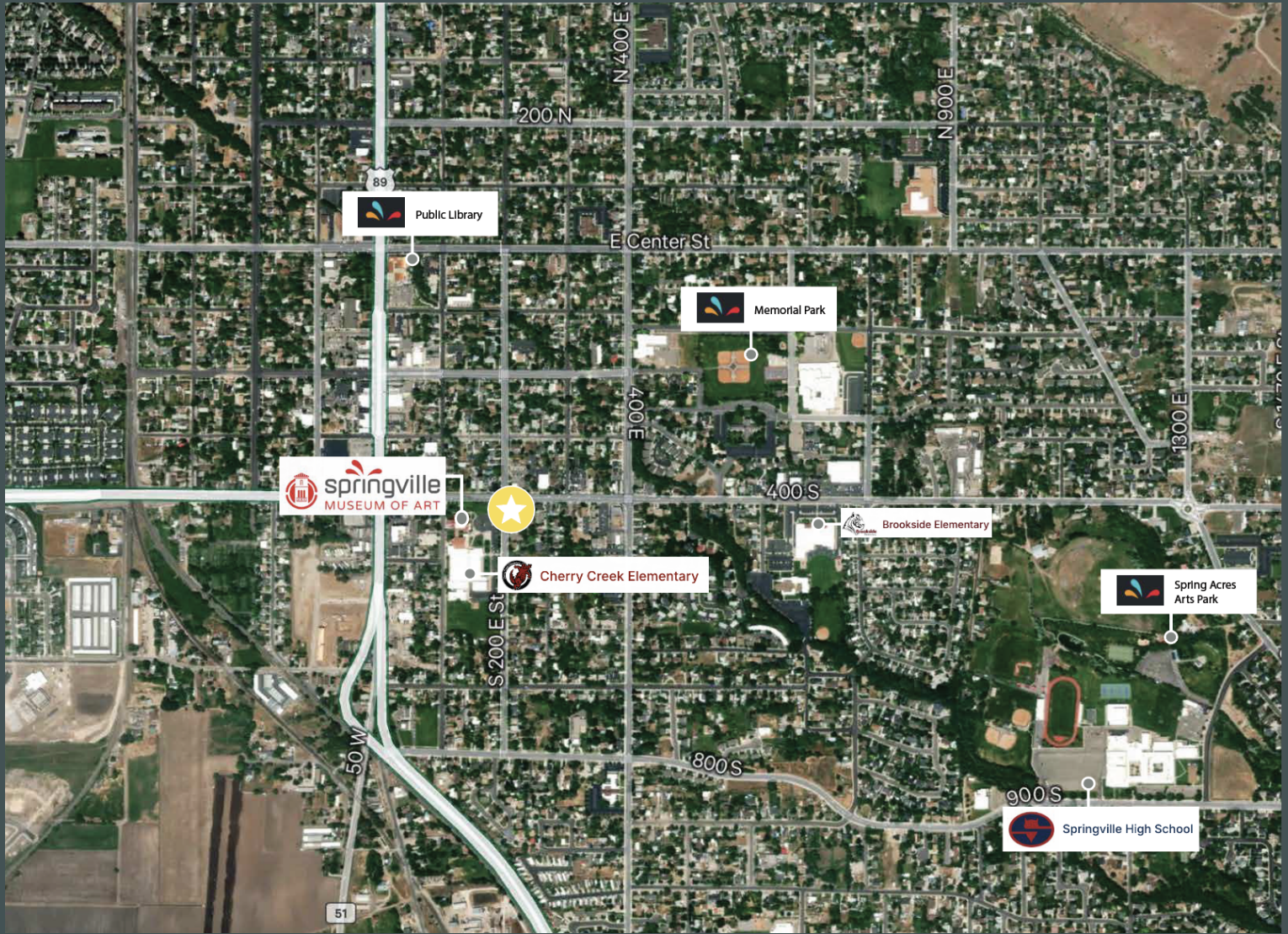




For Sale

415 South 200 East | Springville, Utah

# Area Map



## Contact Us

### Kreg Peterson

First Vice President

+1 801 869 8092

kreg.peterson@cbre.com

### Cole Bennee

Associate

+1 801 913 4010

cole.bennee@cbre.com

### Erik Simper

Transaction Management Director

+1 801 869 8016

erik.simper@cbre.com

© 2025 CBRE, Inc. All rights reserved. This information has been obtained from sources believed reliable, but has not been verified for accuracy or completeness. You should conduct a careful, independent investigation of the property and verify all information. Any reliance on this information is solely at your own risk. CBRE and the CBRE logo are service marks of CBRE, Inc. All other marks displayed on this document are the property of their respective owners, and the use of such logos does not imply any affiliation with or endorsement of CBRE. Photos herein are the property of their respective owners. Use of these images without the express written consent of the owner is prohibited.