

3 STORY HIGH IMAGE OFFICE BUILDING

A photograph of a modern, multi-story building with a prominent cylindrical tower. The building's facade is made of dark, textured brick or stone. Large, dark-framed glass windows are visible on the upper floors. The address number "8141" is displayed in white on the upper left corner of the building. In the foreground, there is a well-maintained lawn with a large, leafy tree on the left and a white pickup truck parked on the right. A red fire hydrant is visible near the truck. The sky is clear and blue.

- A 3-Story Office Building with approximately ±37,987 SF.
- The building was built utilizing “Class A” construction with high fire brick fascade and reflective bronze glass.
- The office building is located within walking distance to the Anaheim Hills Festival Shopping Center with over ±600,000 square feet of retail and restaurants.

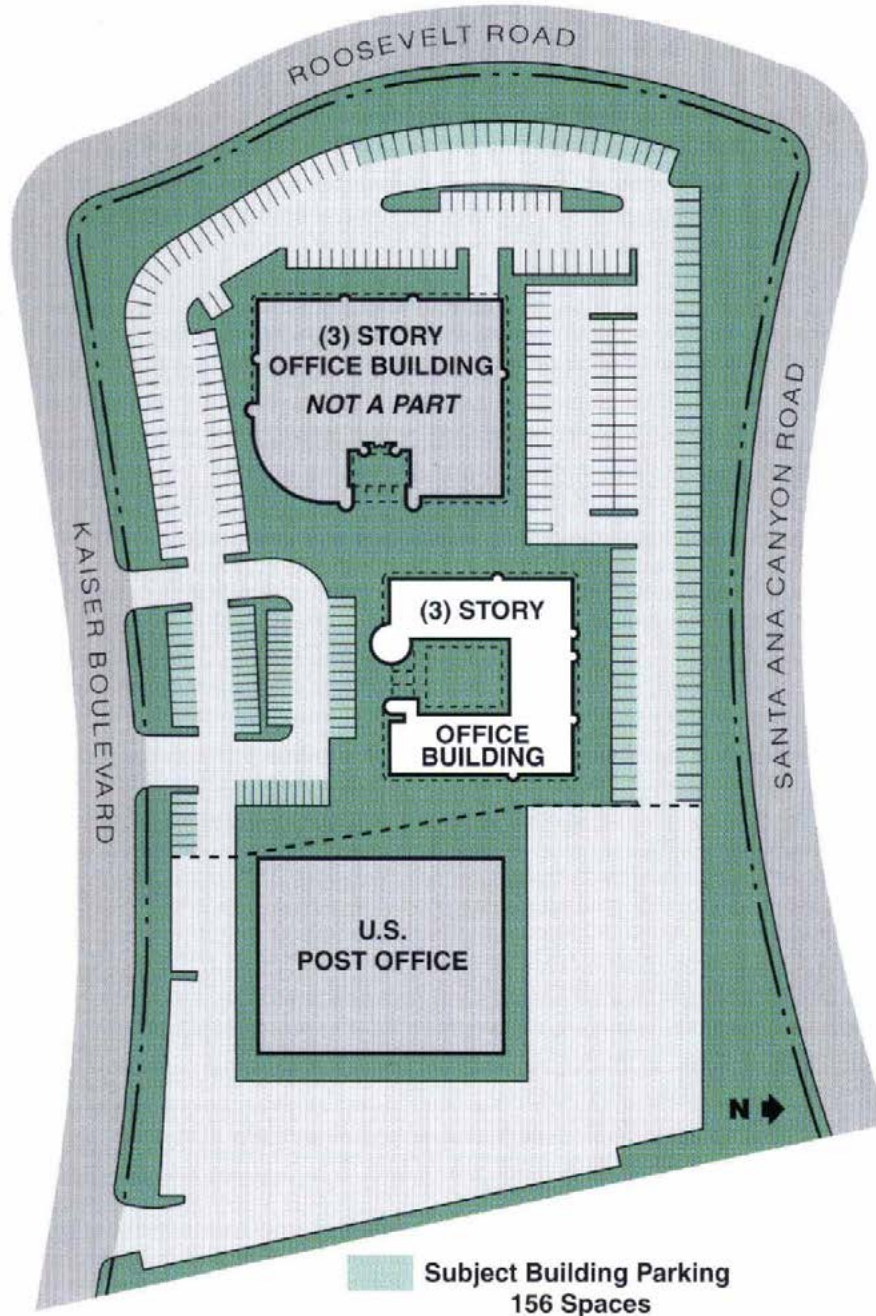


Licensed as Real Estate Salespersons by the DRE. The information contained herein has been obtained from sources we deem reliable. While we have no reason to doubt its accuracy, we do not guarantee it. ©2025 Voit Real Estate Services, Inc. All Rights Reserved. License #01991785

FOR LEASE

3 STORY HIGH IMAGE OFFICE BUILDING

8141 E. Kaiser Blvd., Anaheim Hills, CA



BARRY WALSH
Vice President
714.935.2309
Lic. #01213417
bwalshe@voitco.com

Voit
REAL ESTATE SERVICES

2400 E. Katella Avenue, Suite 750, Anaheim, CA 92806
714.978.7800 • 714.978.9431 Fax www.VoitCo.com

Licensed as Real Estate Salespersons by the DRE. The information contained herein has been obtained from sources we deem reliable. While we have no reason to doubt its accuracy, we do not guarantee it. ©2025 Voit Real Estate Services, Inc. All Rights Reserved. License #01991785

FOR LEASE

3 STORY HIGH IMAGE OFFICE BUILDING

8141 E. Kaiser Blvd., Anaheim Hills, CA

AVAILABILITY

Floor	Suite	Rentable Area SF	Lease Rate PSF	Comments
1	106	± 1,758	\$2.40 FSG	6 Private Offices
1	112	± 1,106	\$2.40 FSG	3 Private Offices

Lease Rate:	Full Service Gross
Expense Stop:	Base Year
Tenant Improvements:	Negotiable
Parking:	4:1,000
To Show Space:	Call Voit to set time to tour
Amenities:	Adjacent to Anaheim Hills Festival Center

As of 2-11-2025

BARRY WALSH
Vice President
714.935.2309
Lic. #01213417
bwalshe@voitco.com

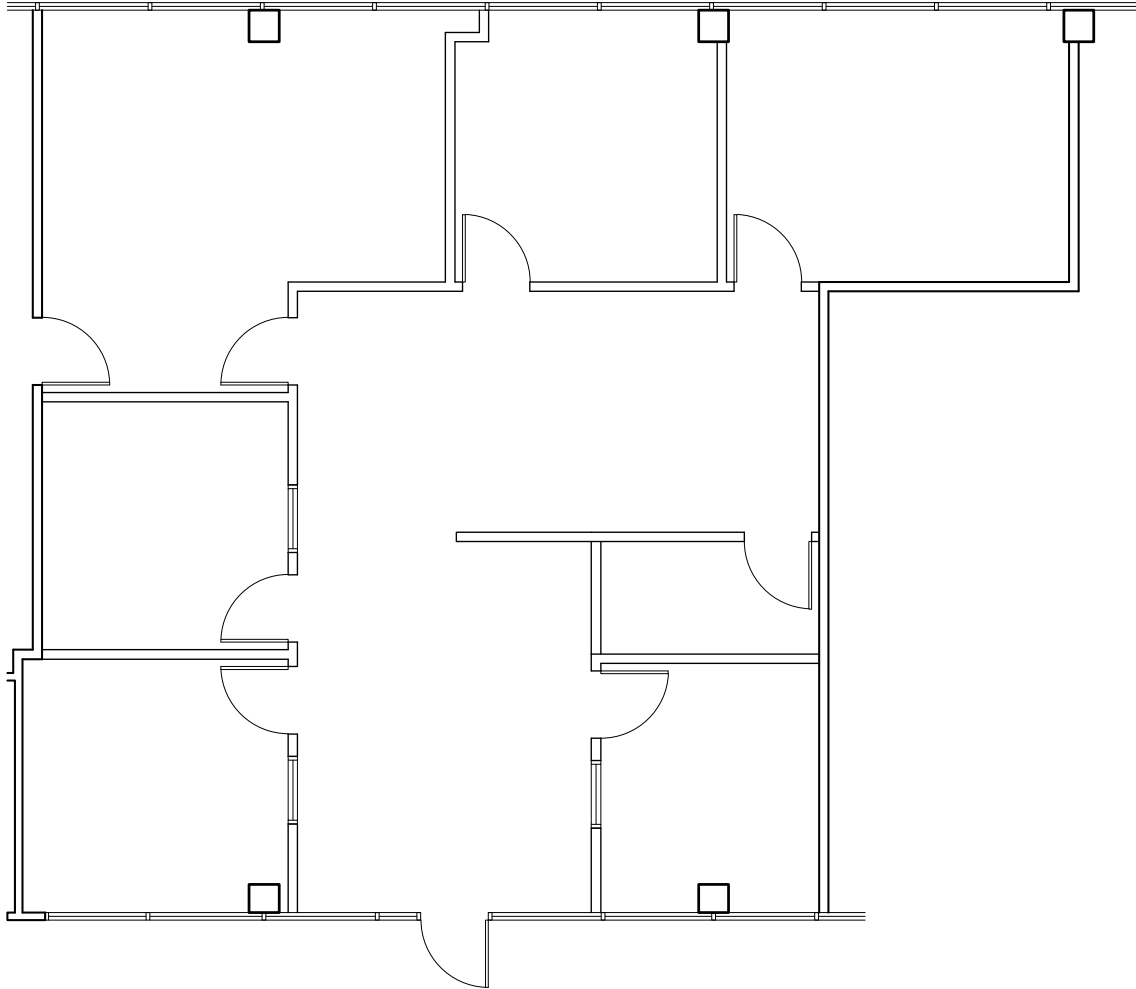
Voit
REAL ESTATE SERVICES

2400 E. Katella Avenue, Suite 750, Anaheim, CA 92806
714.978.7800 • 714.978.9431 Fax www.VoitCo.com

Licensed as Real Estate Salespersons by the DRE. The information contained herein has been obtained from sources we deem reliable. While we have no reason to doubt its accuracy, we do not guarantee it. ©2025 Voit Real Estate Services, Inc. All Rights Reserved. License #01991785

8141 E. KAISER BLVD., ANAHEIM HILLS

Suite 106 - ±1,758 SF



BARRY WALSH
Vice President
714.935.2309
Lic. #01213417
bwalsh@voitco.com

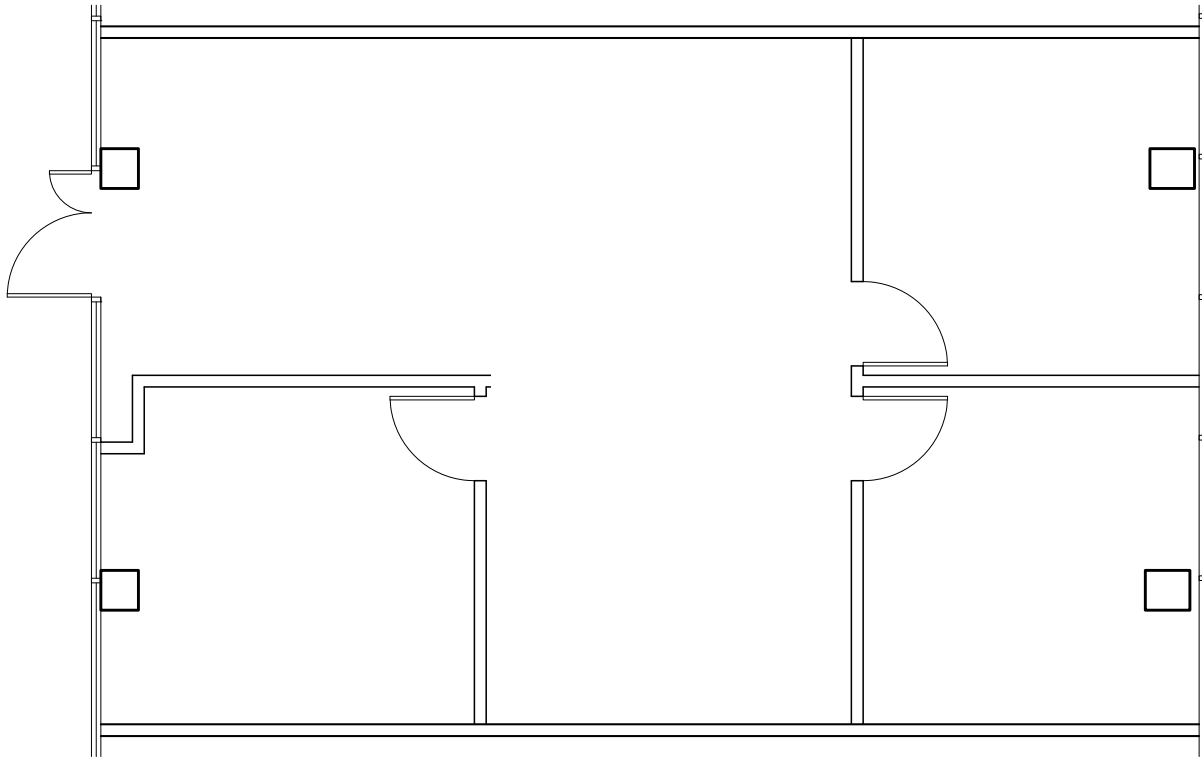
Voit
REAL ESTATE SERVICES

2400 E. Katella Avenue, Suite 750, Anaheim, CA 92806
714.978.7800 • 714.978.9431 Fax www.VoitCo.com

Licensed as Real Estate Salespersons by the DRE. The information contained herein has been obtained from sources we deem reliable. While we have no reason to doubt its accuracy, we do not guarantee it. ©2025 Voit Real Estate Services, Inc. All Rights Reserved. License #01991785

8141 E. KAISER BLVD., ANAHEIM HILLS

Suite 112 - ±1,106 SF



BARRY WALSH
Vice President
714.935.2309
Lic. #01213417
bwalshe@voitco.com

Voit
REAL ESTATE SERVICES

2400 E. Katella Avenue, Suite 750, Anaheim, CA 92806
714.978.7800 • 714.978.9431 Fax www.VoitCo.com

Licensed as Real Estate Salespersons by the DRE. The information contained herein has been obtained from sources we deem reliable. While we have no reason to doubt its accuracy, we do not guarantee it. ©2025 Voit Real Estate Services, Inc. All Rights Reserved. License #01991785