

SOCIAL DISTRICT

SOCIAL DISTRICT

- ✓ Sitting on **10 acres**
- ✓ 37 Flex Condos **2,300 up to 11,980 sq ft**
- ✓ 15 Retail Spaces **760 sq ft**
- ✓ 2 Restaurant building **13,500 sq ft**
- ✓ **+ 2600 sq ft** rooftops



AVAILABLE FOR SALE, PRICES FROM **\$370 TO \$580**
FLEXIBLE LEASING AGREEMENTS STARTING AT **\$19.80 SQ FT/YEAR**



PARKING LOTS

309

PARKING SPACES
(9'X19')

FACILITIES

- 2 Outdoor 5x5 Soccer Fields:
13,127 sqft
- 5 Indoor Pickleball Courts
- 4 Indoor Paddle Tennis Courts
- 2 Outdoor Paddle Tennis Courts
- **10,744 sqft** Turf Social Area
- Splash park
- Jogging trails
- 4 EV Charging Stations
- ATMs, Vending Machines, and more



Facilities & Businesses | Pickleball Courts | Paddle Tennis Courts | Pet zone | Food Hall | Retail Kiosks | EV Charging Stations | ATMs

COMING
MARCH 2026
SOON



POWERED BY:
**FLEX
BUSINESS
PARK**



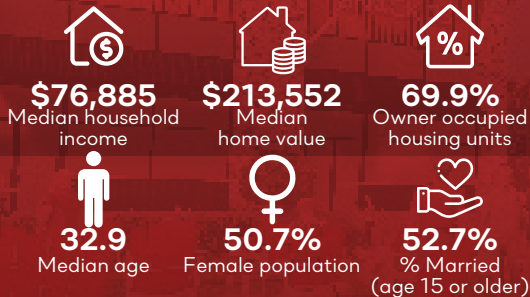
1 Hall Rd, Houston,
TX 77075,
Estados Unidos

LOCATION

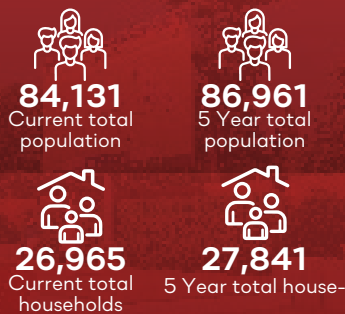




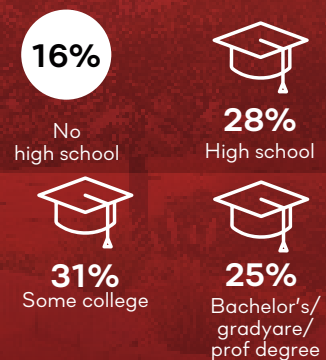
HOUSEHOLD & POPULATION CHARACTERISTICS



HOUSEHOLDS & POPULATION



EDUCATION



SPACES FOR SALE

A SPACE BUILT TO CONNECT & THRIVE

A 10-acre hub of energy, flavor, and connection in the heart of Houston. Here, every square foot is designed for living fully, playing hard, and enjoying life with your people.

Social District boasts top-notch 2 soccer fields, 5 indoor pickleball courts, 6 paddle tennis courts. High-class flex spaces for office, health and beauty, retail, food, sports, services and more.
+10,000 sq/ft Social Turf and Splash Zone Aeronautical-themed restaurant, a high-level dining experience

CONTACT



+52 33 3814 6256
+1 713 437 2040



arnold@flexbusinesspark.com



www.socialdistrict.us