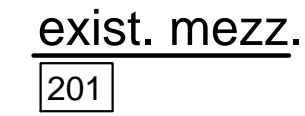


ROOM FINISH SCHEDULE						
No.	Room Name	Floor	Base	Wall	Ceiling	Ctg Ht.
101	OPEN OFFICE	CARPET	CARPET BASE	GYP. BD. (PRIME 4 PAINT)	2 x 4 ACOUSTICAL TILE	9'-0"
102	OFFICE 1	CARPET	CARPET BASE	GYP. BD. (PRIME 4 PAINT)	2 x 4 ACOUSTICAL TILE	9'-0"
103	OFFICE 2	CARPET	CARPET BASE	GYP. BD. (PRIME 4 PAINT)	2 x 4 ACOUSTICAL TILE	9'-0"
104	UNISEX B.F. LAVATORY	CERAMIC TILE	VINYL BASE	GYP. BD. (PRIME 4 PAINT)	2 x 4 ACOUSTICAL TILE	9'-0"
105	SHOP B.F. LAVATORY	CERAMIC TILE	VINYL BASE	GYP. BD. (PRIME 4 PAINT)	2 x 4 ACOUSTICAL TILE	9'-0"
106	SHOP AREA	SEALED CONC.	VINYL BASE	GYP. BD. (PRIME 4 PAINT)	EXPOSED	EXPOSED
201	MECHANICAL	PLYWOOD	VINYL BASE	GYP. BD. (PRIME 4 PAINT)	EXPOSED	EXPOSED

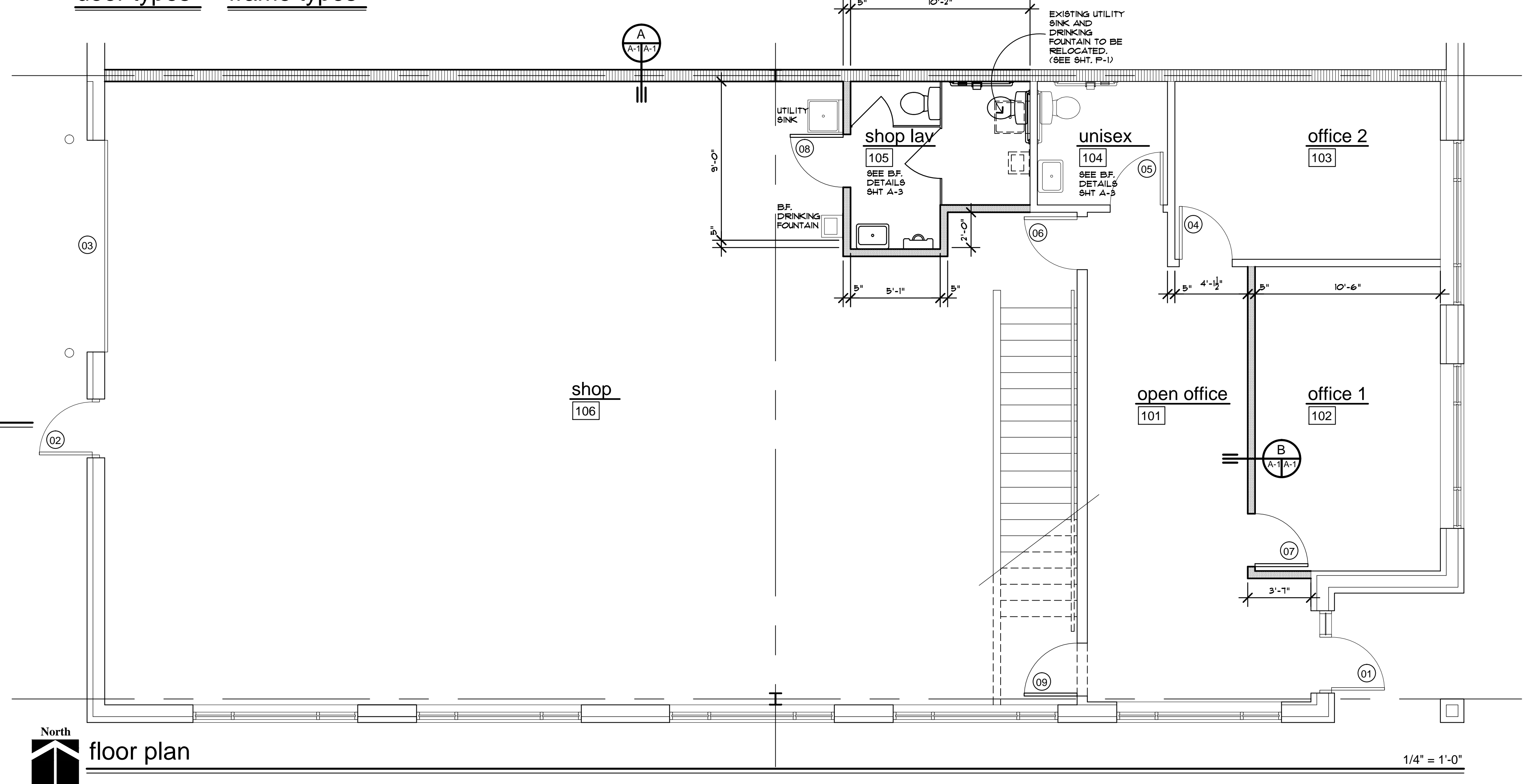
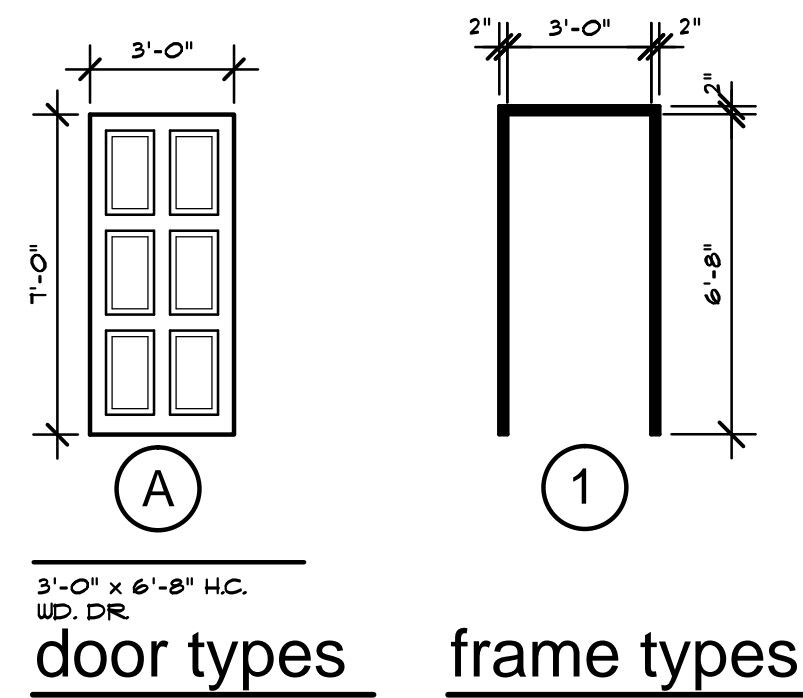
DOOR SCHEDULE															
Door No.	Door						Framing						Fire Rating		Remarks
	Type	Mat.	Glass	Details			Type	Mat.	Details						
				Width	Height	Thick.			Jamb	Head	Sill	Label	Hour		
01															1, 3, 9
02															1, 3, 9
03															12
04															1, 10
05															1, 3, 4, 5
06															1, 3, 10
07	A	WOOD		3'-0"	7'-0"	1 1/2"	1	RED	1	2					1, 10
08	A	WOOD		3'-0"	7'-0"	1 1/2"	1	RED	1	2					1, 3, 4, 5
09	A	WOOD		3'-0"	7'-0"	1 1/2"	1	RED	1	2					1, 3, 10

1. WALL OR FLOOR STOP
2. LOCK SET
3. DOOR CLOSER & HOLD OPEN
4. PUSH BUTTON LOCKSET
5. BARRIER FREE SIGNAGE AND SYMBOL OF COMPLIANCE
6. LOUVERED VENT
7. 18" WIDE SIDE LITE w/ 1/4" TEMP. GLASS
8. 24" WIDE SIDE LITE w/ 1/4" TEMP. GLASS
9. ENTRY LOCKSET - THUMBBLATCH
10. PASSAGE LOCKSET
11. LEAD LINED
12. MOTORIZED OPENER
13. PROVIDE AIR TIGHT SEAL
14. STANDARD BI-FOLD HARDWARE

REFERENCE CODE:	2015 MICHIGAN BUILDING CODE WITH STATE AMENDMENTS
	2015 MICHIGAN PLUMBING CODE WITH STATE AMENDMENTS
	2015 MICHIGAN MECHANICAL CODE WITH STATE AMENDMENTS
	2015 NATIONAL ELECTRICAL CODE WITH STATE AMENDMENTS
	MICHIGAN ENERGY CODE ASHRAE 90.1 - 2013
BUILDING AREA:	OFFICE: 110 SQUARE FEET SHOP: 2,035 SQUARE FEET MEZZANINE: 138 SQUARE FEET TOTAL: 3,543 SQUARE FEET
USE GROUP:	(8-1) MODERATE HAZARDOUS STORAGE (B) BUSINESS
CONSTRUCTION TYPE:	VB (COMBUSTIBLE, UNPROTECTED)
PROPOSED USE:	INDUSTRIAL OFFICE
OCCUPANT LOAD: (TABLE 1004.1.2)	SHOP AREA: 1 PER 500 SF. GROSS = 2113 / 500 = 4 OCCUPANTS OFFICE AREA: 1 PER 100 SF. GROSS = 110 / 100 = 1 OCCUPANT TOTAL = 14 OCCUPANTS



NOTE:
EXISTING CONSTRUCTION THIS
AREA TO REMAIN



701 hayes road
nelby, mi 48315
586.532.0091

© 1988 - FRANK SALAMONE ARCHITECT INC. ALL RIGHTS RESERVED. THESE PLANS AND DRAWINGS OWNED BY AND THE SOLE PROPERTY OF FRANK SALAMONE ARCHITECT INC. ANY REPRODUCTION, COPYING, REUSE OR DISTRIBUTION OF THESE PLANS AND DRAWINGS IS STRICTLY PROHIBITED WITHOUT THE PRIOR WRITTEN CONSENT OF FRANK SALAMONE ARCHITECT INC.

[illegible]

Revised:	09/19/20
Issued & Permit:	08/14/20

Project: _____
Proposed Industrial
Facility for:

M-5 Engineering
041 Leone Drive
Lacomb Twp., MI 48042

Quadrat
Condo Park L.L.C.
801 23 Mile Road
Farmington Hills, MI 48042

Sheet Title: FLOOR PLAN

Project Number: 0-179

Drawn By: _____

Checked By: _____
S.



ue:

preliminary

construction

record

Sheet Number: _____