



5004 NE LAKEWOOD WAY

Lee's Summit, MO 64064

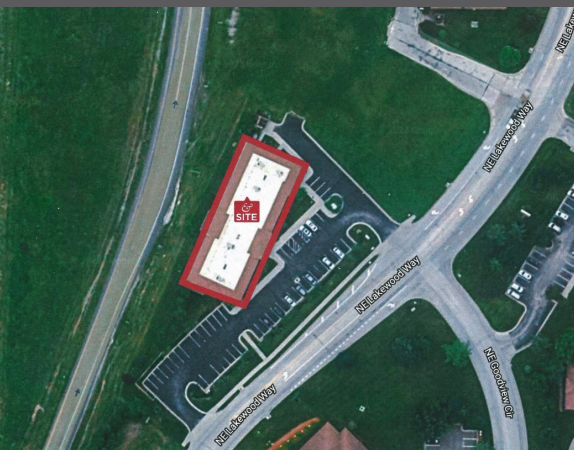


LEASE AVAILABLE

- Class A Office Space
- Former ReeceNichols Office
- Fabulous visibility from I-470 & located in the upscaled Lakewood Community.
- Tenants include a law firm and Southern Bank

HIGHLIGHTS

- ✓ 2,012 SqFt-Available Immediately
- ✓ Upscaled Community
- ✓ \$23/SqFt
- ✓ Class A
- ✓ Newer Construction
- ✓ Visibility from I-470



LANCE DILLENSCHNEIDER

816-591-0570

816-524-7272

Lance@ReeceCommercial.com

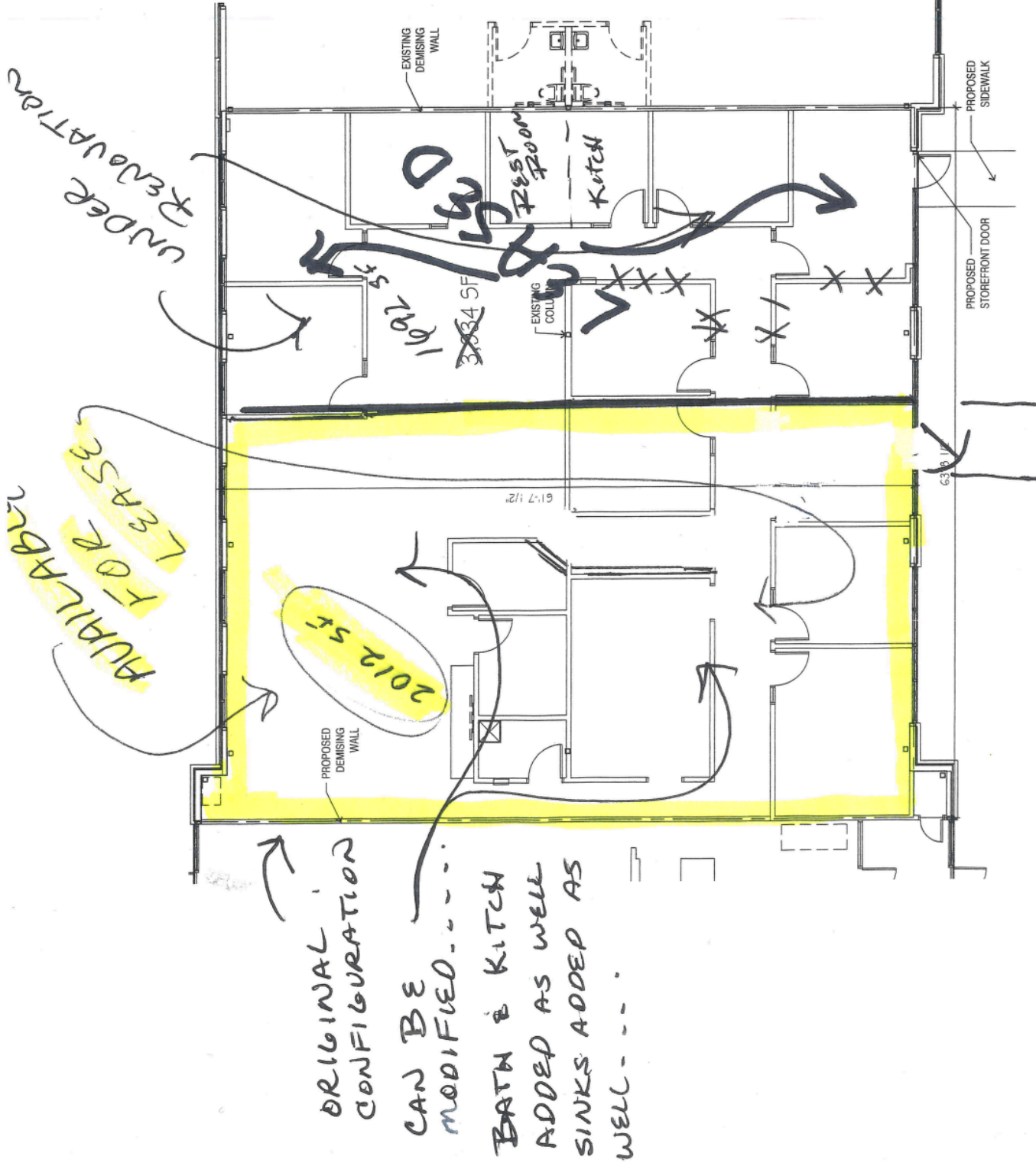


David Eskov
Architect
21466 w 120th st
Olathe, KS 66061
eskovarch@outlook.com
913-284-3660

Drawings and/or Specifications
are original proprietary work and
property of the Architect intended
for the specifically titled project.
Use of items contained herein
without consent of Architect for
other projects is
prohibited. Drawings illustrate
best information available to
Architect.

LOD
APRIL 17, 2023

VACANT SPACE
5006 NE LAKEWOOD WAY
LEES SUMMIT, MO



LOD 2

SCALE: 1/8" = 1'-0"

LAKEWOOD WAY