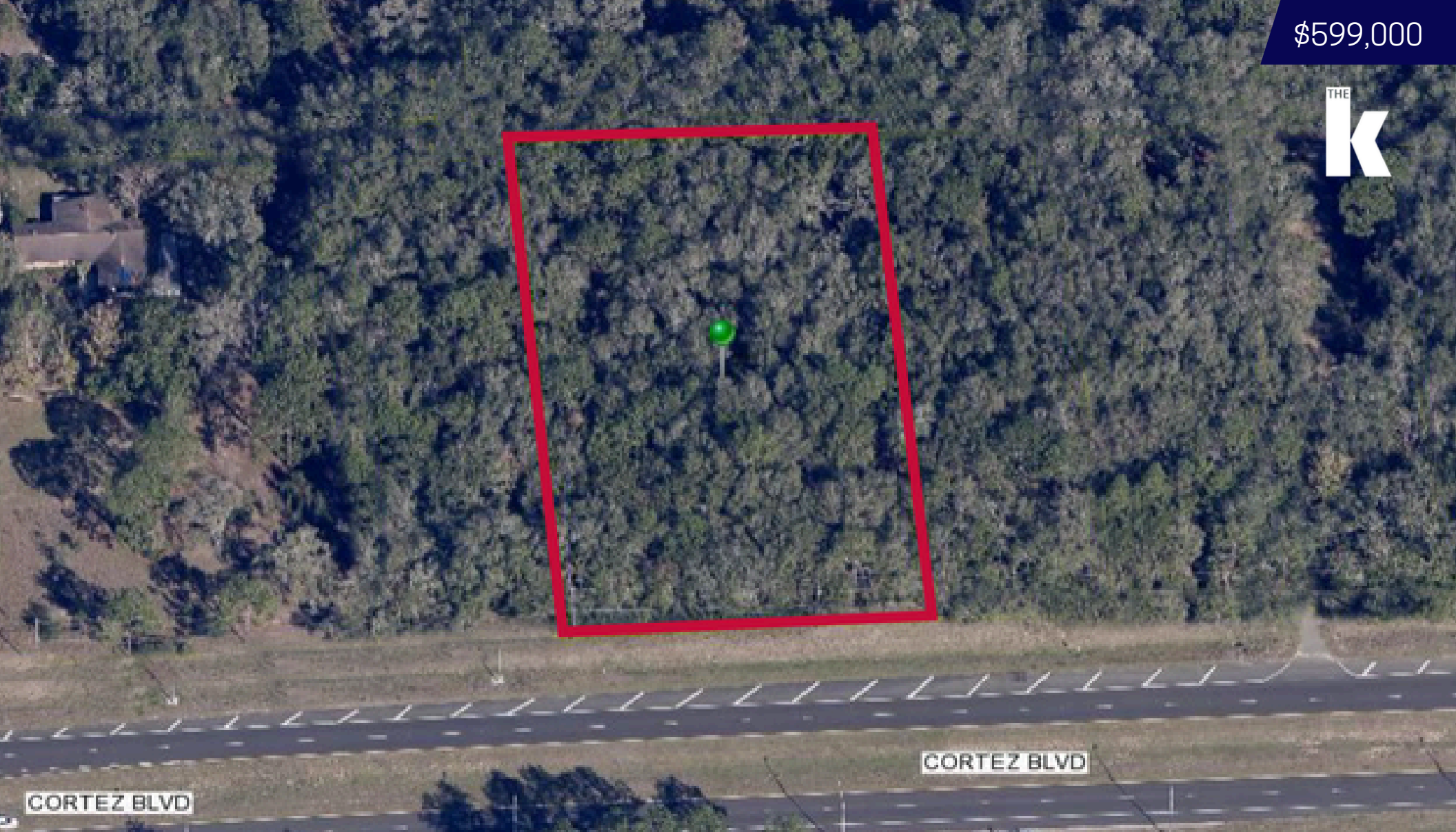


\$599,000



For Sale

± 2 AC Vacant Commercial Land Near Major Routes

SR 50 - 1 Mile West of I-75, Brooksville, FL 34601

Dave Sarich
O: 813-885-5656
C: 813-505-0695
dsarich@thekraussorg.com

THE KRAUSS ORGANIZATION, INC.
Commercial Real Estate Services • Since 1952
711 N Sherrill St. Tampa, FL 33609

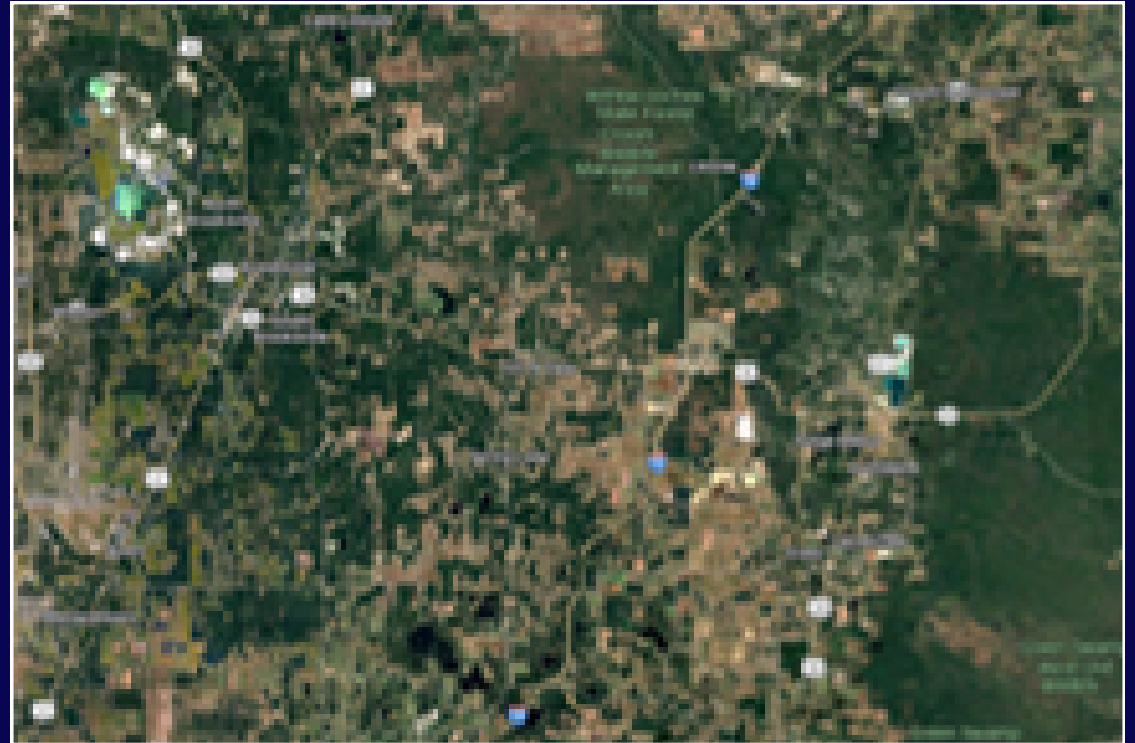
Property Highlights

- Total Acreage: ± 2 AC
- 200' Frontage on SR 50
- C-2 Zoning
- 1 Mile West of I75
- 100% Usable
- Water & Sewer Available

Property Description

Approximately 2 acres of high, dry, and fully usable land with 200 feet of frontage on State Road 50, just 1 mile west of I-75. Zoned PDH – Highway Commercial (C-2), this site is ideal for a range of commercial uses. Water and sewer are available, making development straightforward. Situated in a rapidly growing corridor west of I-75 in Brooksville, this property offers excellent visibility, accessibility, and future growth potential.

Area Map



For Additional Information:

Dave Sarich

O: 813-885-5656

C: 813-505-0695

dsarich@thekraussorg.com

THE KRAUSS ORGANIZATION, INC.
Commercial Real Estate Services • Since 1952

711 N Sherrill St. Tampa, FL 33609

NOTICE TO BROKERS AND PROSPECTIVE PURCHASERS/TENANTS: THE MATERIAL CONTAINED IN THIS OFFERING IS FURNISHED SOLELY FOR THE PURPOSE OF YOUR CONSIDERATION TO PURCHASE/LEASE THE PROPERTY CONTAINED HEREIN, AND IS NOT TO BE USED FOR ANY OTHER PURPOSE WITHOUT THE EXPRESS WRITTEN CONSENT OF THE KRAUSS ORGANIZATION OR THE OWNER. THE MATERIAL IS BASED ON INFORMATION OBTAINED BY OWNER AND ON INFORMATION OBTAINED BY THE KRAUSS ORGANIZATION FROM SOURCES THEY DEEM RELIABLE. THIS IS A SUMMARY OF PERTINENT FACTS ON THE PROPERTY AND IS NOT INTENDED TO CONTAIN ALL OF THE INFORMATION DESIRED BY A PROSPECTIVE PURCHASER/TENANT. PROSPECTIVE PURCHASERS/TENANTS SHOULD MAKE THEIR OWN INVESTIGATION AND CONCLUSIONS WITHOUT RELIANCE UPON THE MATERIAL CONTAINED HEREIN. NEITHER OWNER NOR THE KRAUSS ORGANIZATION, NOR ANY OF THEIR OFFICERS, EMPLOYEES OR AGENTS MAKE ANY REPRESENTATION OR WARRANTY EXPRESSED OR IMPLIED AS TO THE ACCURACY OR COMPLETENESS OF THIS OFFERING.