

Truck Maintenance & Trailer Parking Now Available For Lease Jan 1



25,000/15,000/10,000 Sq. Ft. For Lease
On 5 Acres



Brad Bullington: 630-674-6989 brad@gcrealtyinc.com

Bryan Sonn: 847-207-2108 bryan@gcrealtyinc.com

GC Realty & Development LLC 219 E. Irving Pk. Rd. Roselle IL 60172

All information deemed accurate but not guaranteed.

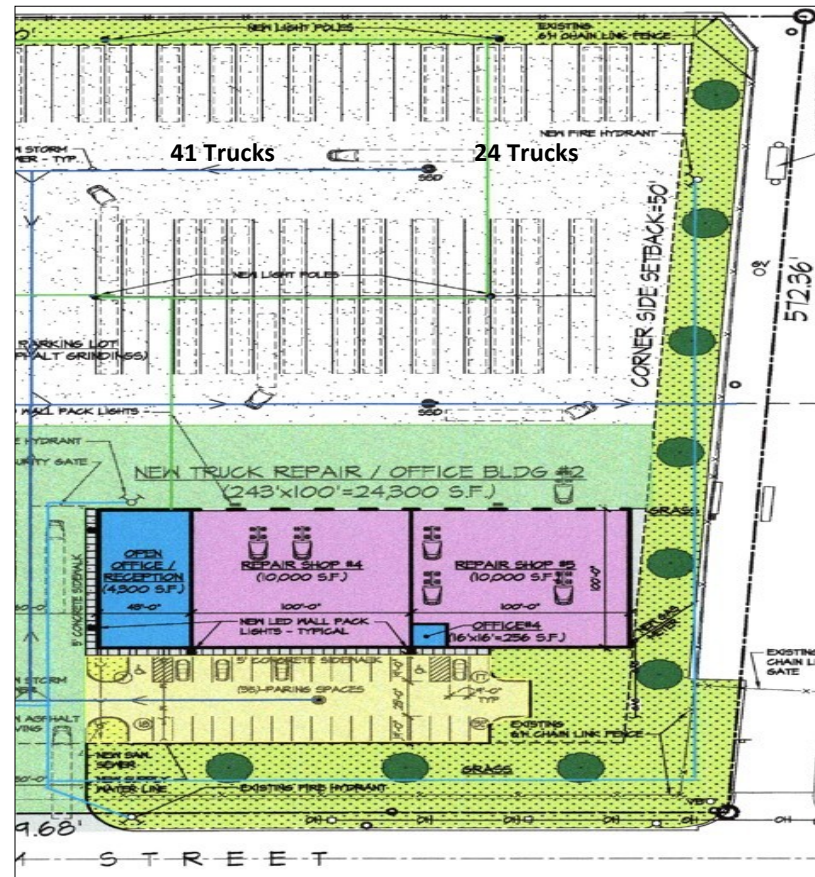
For Lease: \$53,000 Net Per Month



25,000 SF For Lease With 65 Trailer Spots

PROPERTY INFORMATION

- ◆ Building Size: 25,000 SF
- ◆ Land Area: 217,800 SF
- ◆ Office Size: Tenant Responsibility
- ◆ Clear Height: 19-24 FT
- ◆ Loading: 10 Drive In's
- ◆ Power: 400 Amps
- ◆ Parking: 35 Cars/65 Trucks
- ◆ Year Built: 2024
- ◆ Sprinklers: Yes
- ◆ Taxes: 6B TBD



PROPERTY SUMMARY

25,000 SF available for lease with 10 bays and 65 trucks. Space includes 5 truck stalls free of charge then \$225 per stall per month additionally. Offices to be built out by the tenants at their sole cost.

Brad Bullington

630-674-6989

brad@gcrealtyinc.com

Bryan Sonn

847-207-2108

bryan@gcrealtyinc.com

GC Realty & Development LLC

219 E. Irving Pk. Rd. Roselle IL 60172

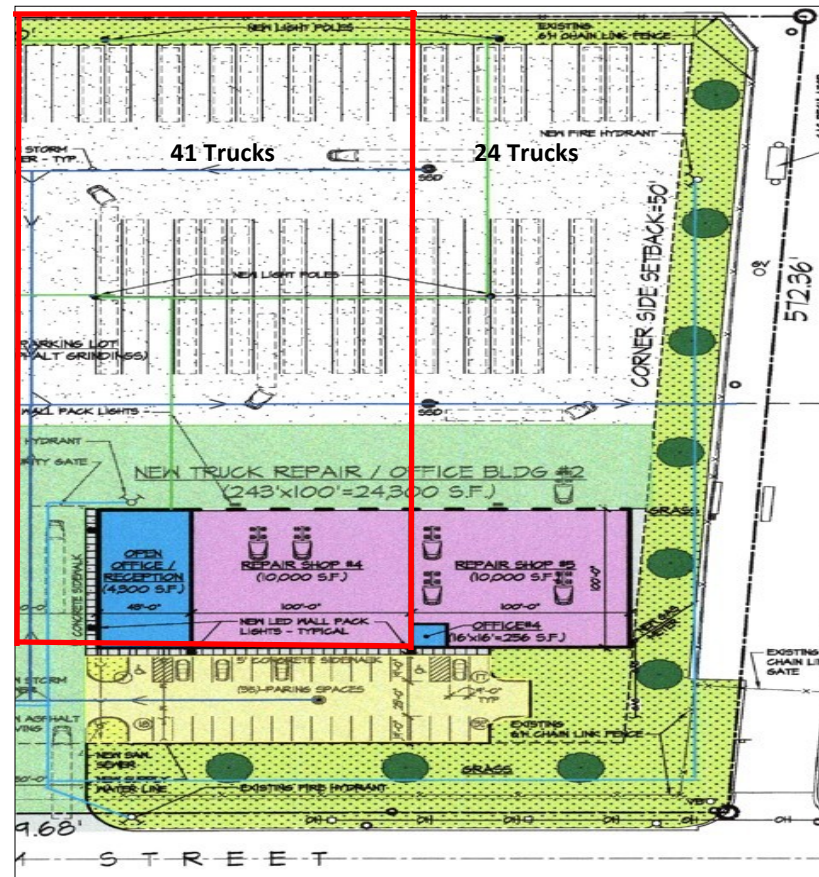
For Lease: \$32,000 Net Per Month



15,000 SF For Lease With 41 Trailer Spots

PROPERTY INFORMATION

- ◆ Building Size: 15,000 SF
- ◆ Land Area: 217,800 SF
- ◆ Office Size: Tenant Responsibility
- ◆ Clear Height: 19-24 FT
- ◆ Loading: 5 Drive In's
- ◆ Power: 400 Amps
- ◆ Parking: 25 Cars/41 Trucks
- ◆ Year Built: 2024
- ◆ Sprinklers: Yes
- ◆ Taxes: 6B TBD



PROPERTY SUMMARY

15,000 SF available for lease with 5 bays and 41 trucks. Space includes 5 truck stalls free of charge then \$225 per stall per month additionally. Offices to be built out by the tenants at their sole cost.

Brad Bullington

630-674-6989

brad@gcrealtyinc.com

Bryan Sonn

847-207-2108

bryan@gcrealtyinc.com

GCR Realty & Development LLC

219 E. Irving Pk. Rd. Roselle IL 60172

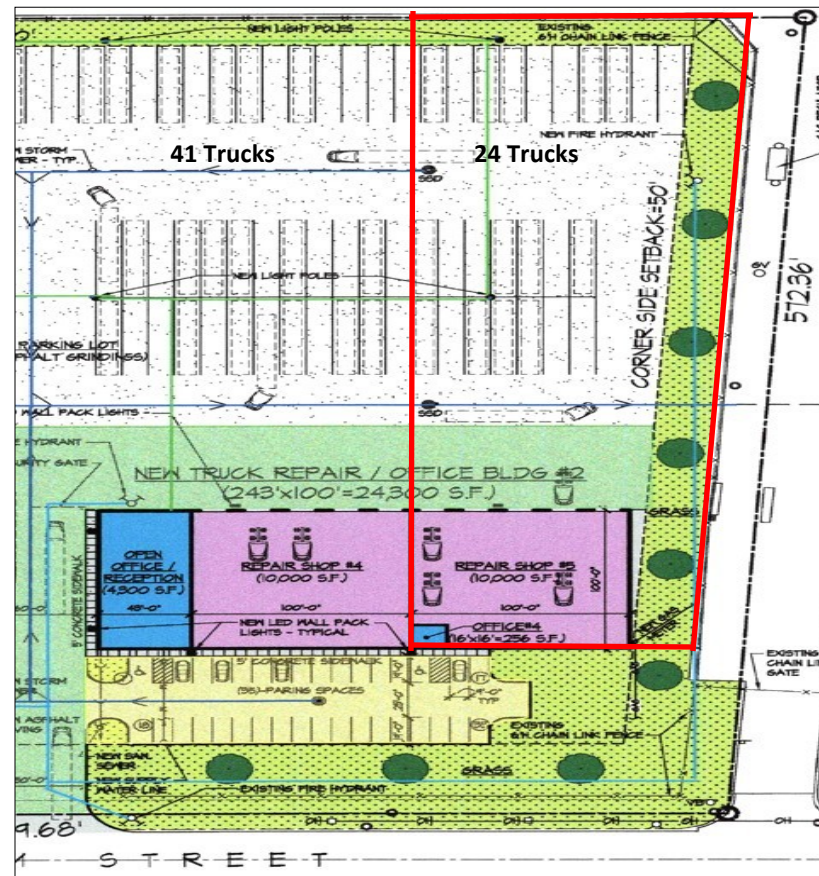
For Lease: \$22,000 Net Per Month



10,000 SF For Lease With 24 Trailer Spots

PROPERTY INFORMATION

- ◆ Building Size: 10,000 SF
- ◆ Land Area: 217,800 SF
- ◆ Office Size: Tenant Responsibility
- ◆ Clear Height: 19-24 FT
- ◆ Loading: 5 Drive In's
- ◆ Power: 400 Amps
- ◆ Parking: 10 Cars/24 Trucks
- ◆ Year Built: 2024
- ◆ Sprinklers: Yes
- ◆ Taxes: 6B TBD



PROPERTY SUMMARY

10,000 SF available for lease with 5 bays and 24 trucks. Space includes 5 truck stalls free of charge then \$225 per stall per month additionally. Offices to be built out by the tenants at their sole cost.

Brad Bullington

630-674-6989

brad@gcrealtyinc.com

Bryan Sonn

847-207-2108

bryan@gcrealtyinc.com

GC Realty & Development LLC

219 E. Irving Pk. Rd. Roselle IL 60172

