

5309 E PINE ST

TULSA, OK 74115



PROPERTY DESCRIPTION

- 26,000± SF Total
- 2,370± SF Office
- 5,000± SF Climate Controlled Food Grade Production Warehouse
- 18,630± SF Concrete Warehouse
- 4.43± Acre Site
- (1) 12' x 14' Dock High Door w/Pit Leveler
- (1) 12' x 14' Drive-In Door
- 14' - 15' Clear Height
- 3 Phase, 240v, 1000 Amp Electric Service
- Built in 1970
- Zoned IL
- Fenced Yard
- Convenient Highway Access

OFFERING SUMMARY

Lease Rate:	\$7.00 SF/yr (NNN)
Available SF:	26,000 SF
Lot Size:	193,021 SF
Building Size:	37,948 SF

DEMOGRAPHICS	0.5 MILES	1 MILE	2 MILES
Total Households	825	3,501	11,527
Total Population	2,432	9,949	31,568
Average HH Income	\$48,925	\$47,244	\$52,142

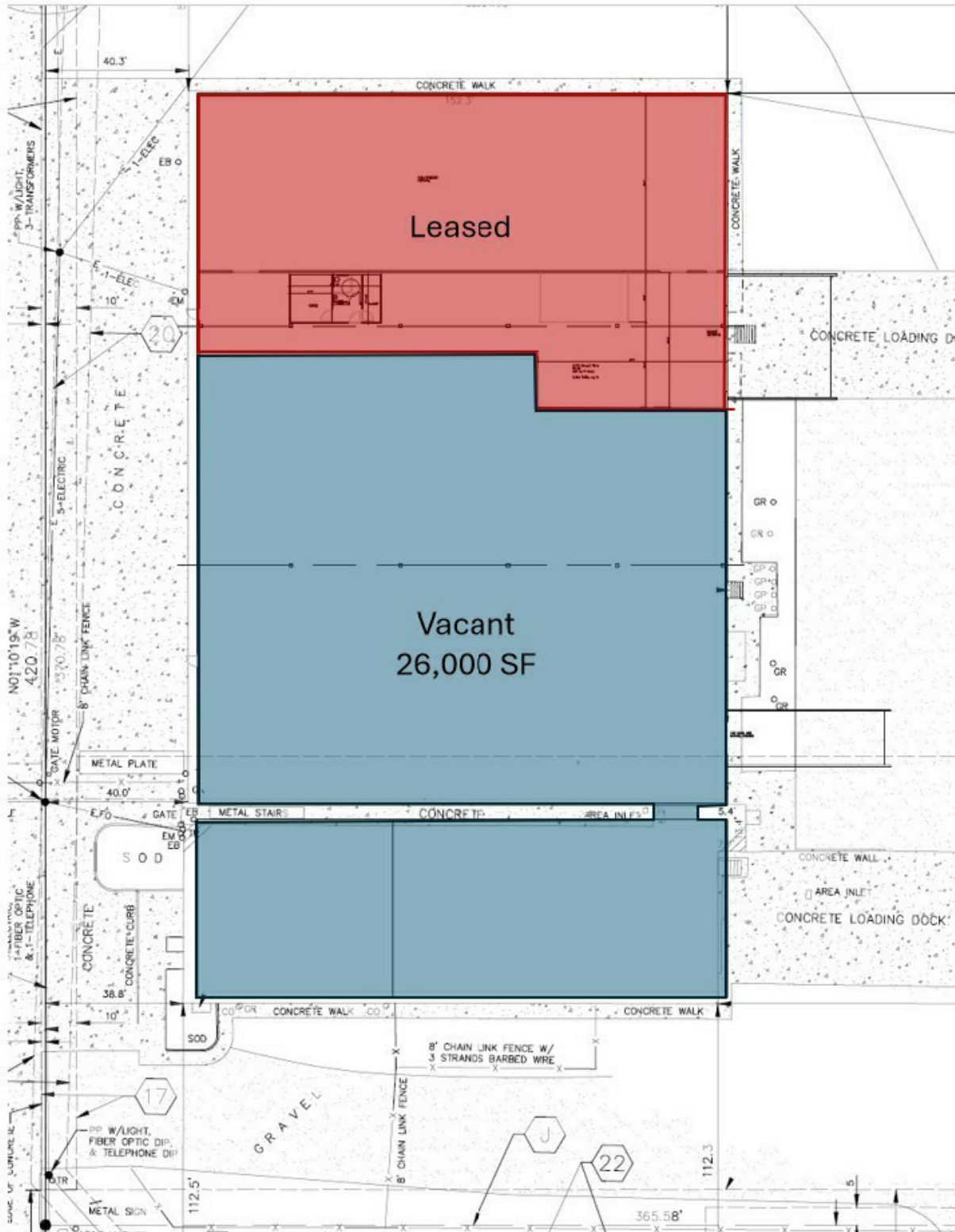
JOSH LOVE

jlove@priceedwards.com

O: 918.394.1000 C: 918.978.2428

5309 E PINE ST

TULSA, OK 74115



JOSH LOVE

jlove@priceedwards.com

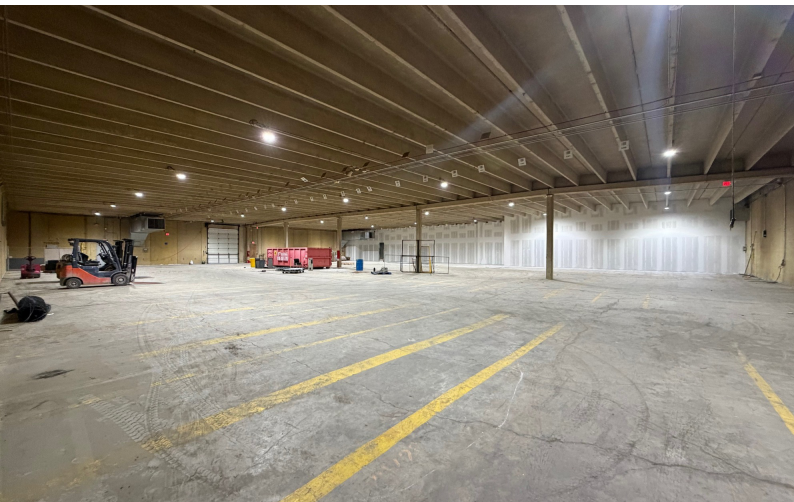
O: 918.394.1000 C: 918.978.2428

PRICE EDWARDS AND CO.

FOR LEASE

5309 E PINE ST

TULSA, OK 74115



JOSH LOVE

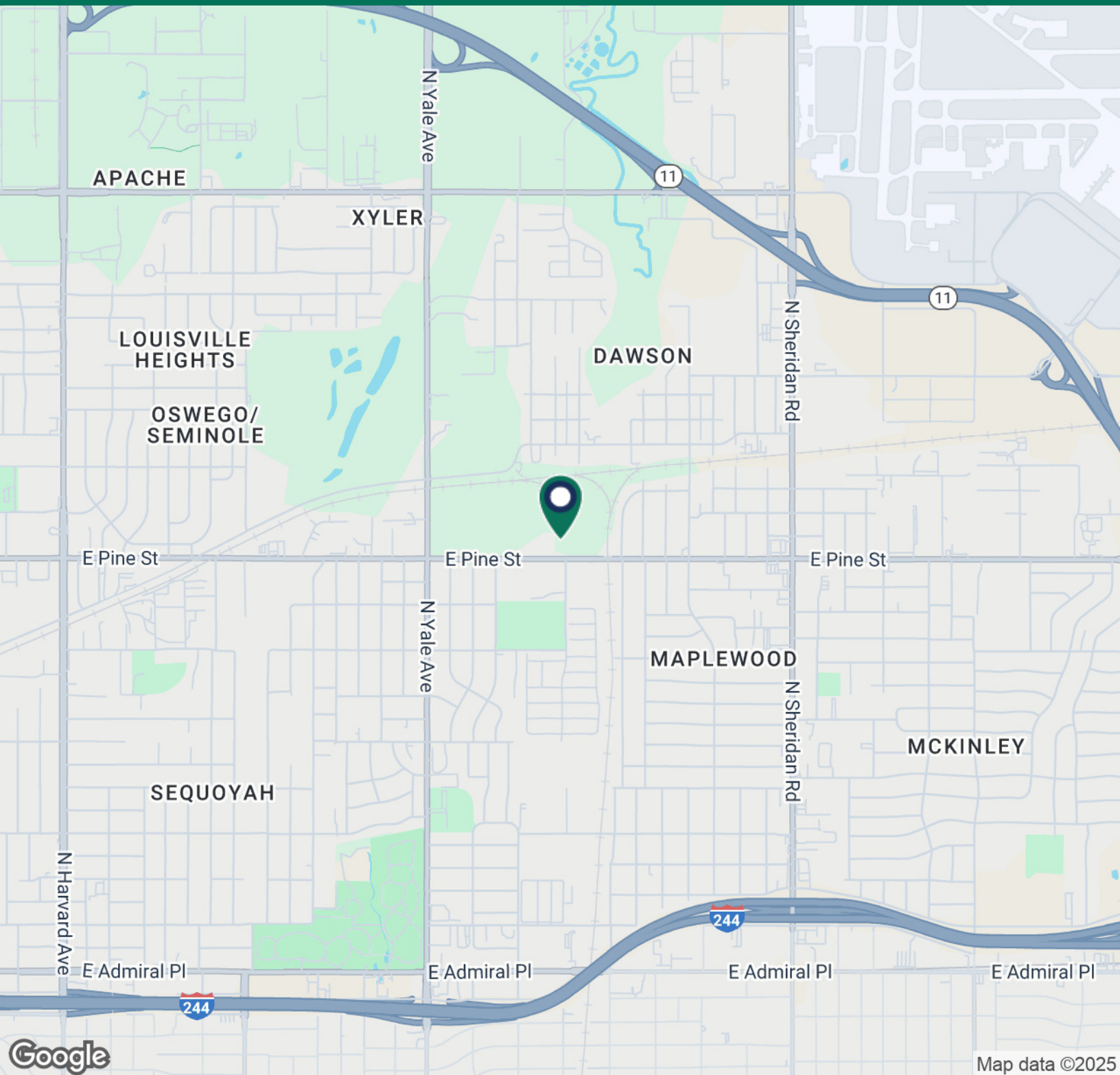
jlove@priceedwards.com

O: 918.394.1000 C: 918.978.2428

The information contained herein is from sources deemed reliable. No representation is made to the accuracy herein. Photos herein are the property of their respective owners, and use of them without express written consent of the owner is prohibited.

5309 E PINE ST

TULSA, OK 74115



JOSH LOVE

jlove@priceedwards.com

O: 918.394.1000 C: 918.978.2428