

2113 WELLS BRANCH
AUSTIN, TX 78728

NORTH AUSTIN



2113 WELLS BRANCH

7,944 SF – 11,383 SF

AVAILABLE



2113 WELLS BRANCH

2113 WELLS BRANCH PKWY
AUSTIN, TX 78728

2113 Wells Branch is a 110,088 SF four building industrial/flex value office property located in North Central Austin near the intersection of Howard Lane and Mopac Expressway. The project is perfect for small office users requiring warehouse space and dock door access.



MITCHELL BECKER | mitchell.becker@streamrealty.com | 512.481.3012

LUKE WATSON | luke.watson@streamrealty.com | 512.481.3056

2113 WELLS BRANCH

2113 WELLS BRANCH PKWY
AUSTIN, TX 78728

SUITE 3000

11,383 SF

Available Now

Class A Spec Office Finishes Complete

100% Office

Grade level Loading

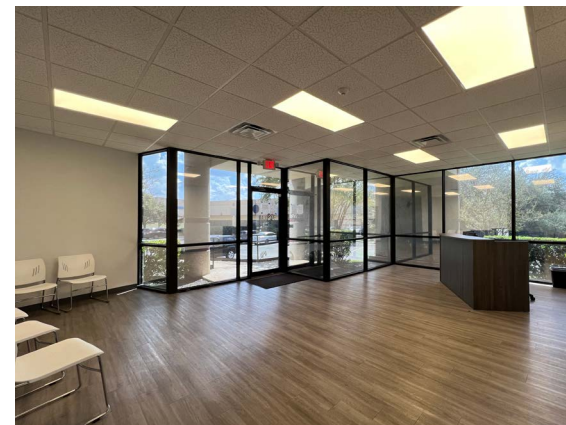
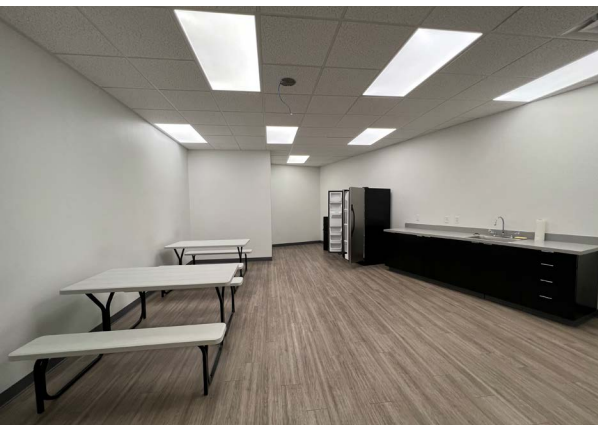
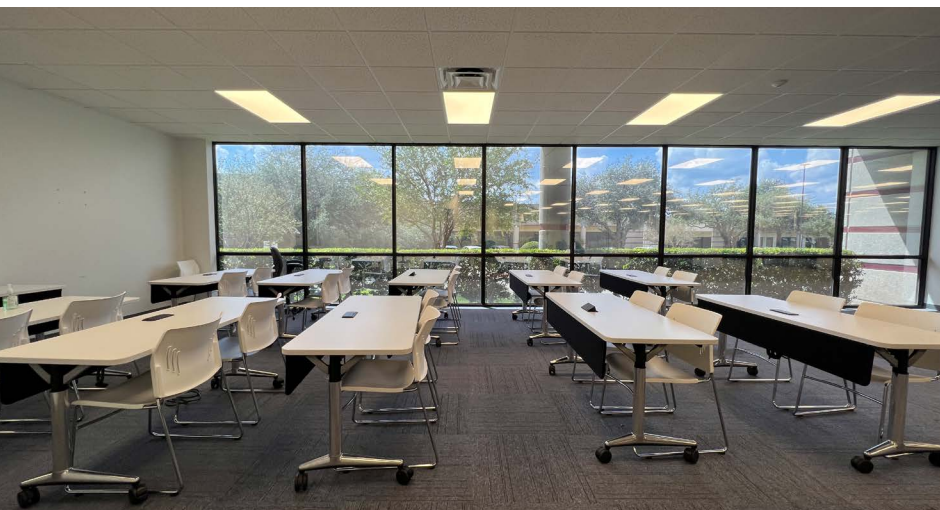
Heavy Power: 2,000 amp, 480v, 3-phase

Pictured furniture available

or can be removed



360° Click to View
Virtual Tour



MITCHELL BECKER | mitchell.becker@streamrealty.com | 512.481.3012

LUKE WATSON | luke.watson@streamrealty.com | 512.481.3056

2113 WELLS BRANCH

2113 WELLS BRANCH PKWY
AUSTIN, TX 78728

SUITE 6500

7,944 SF

Available Now

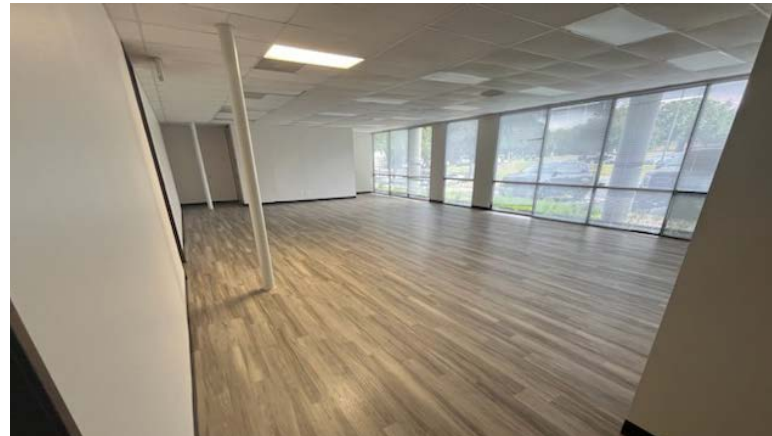
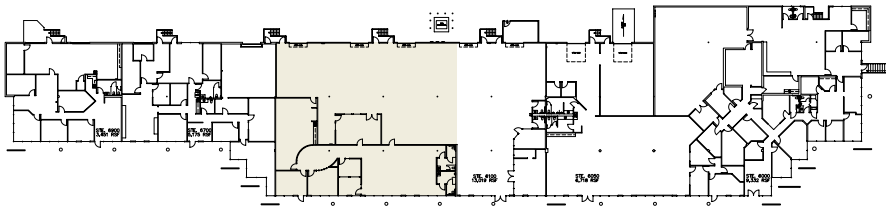
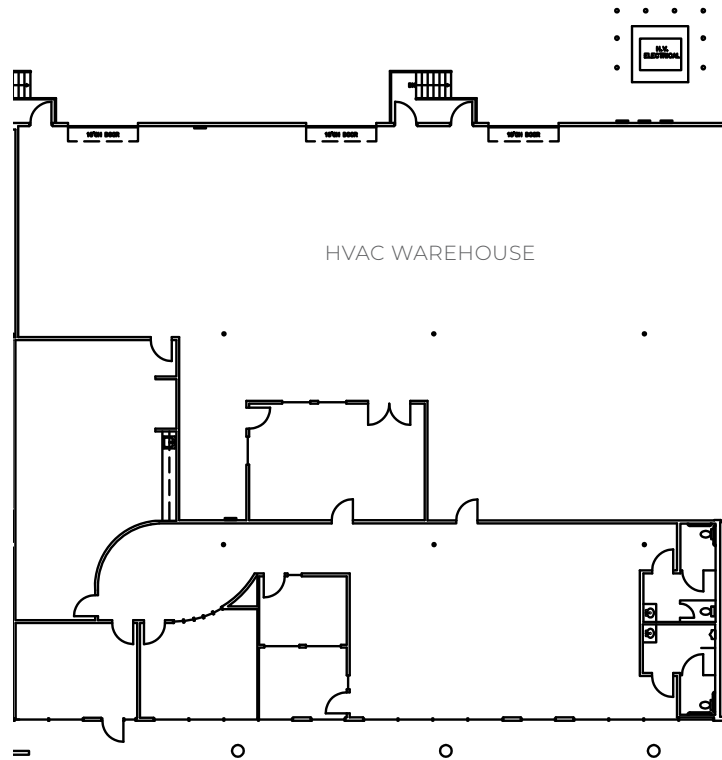
65% Warehouse / 35% Office

100% HVAC

3 Dock High

+/- 16' Clear Height

Heavy Power: 800 amp, 208v, 3-phase

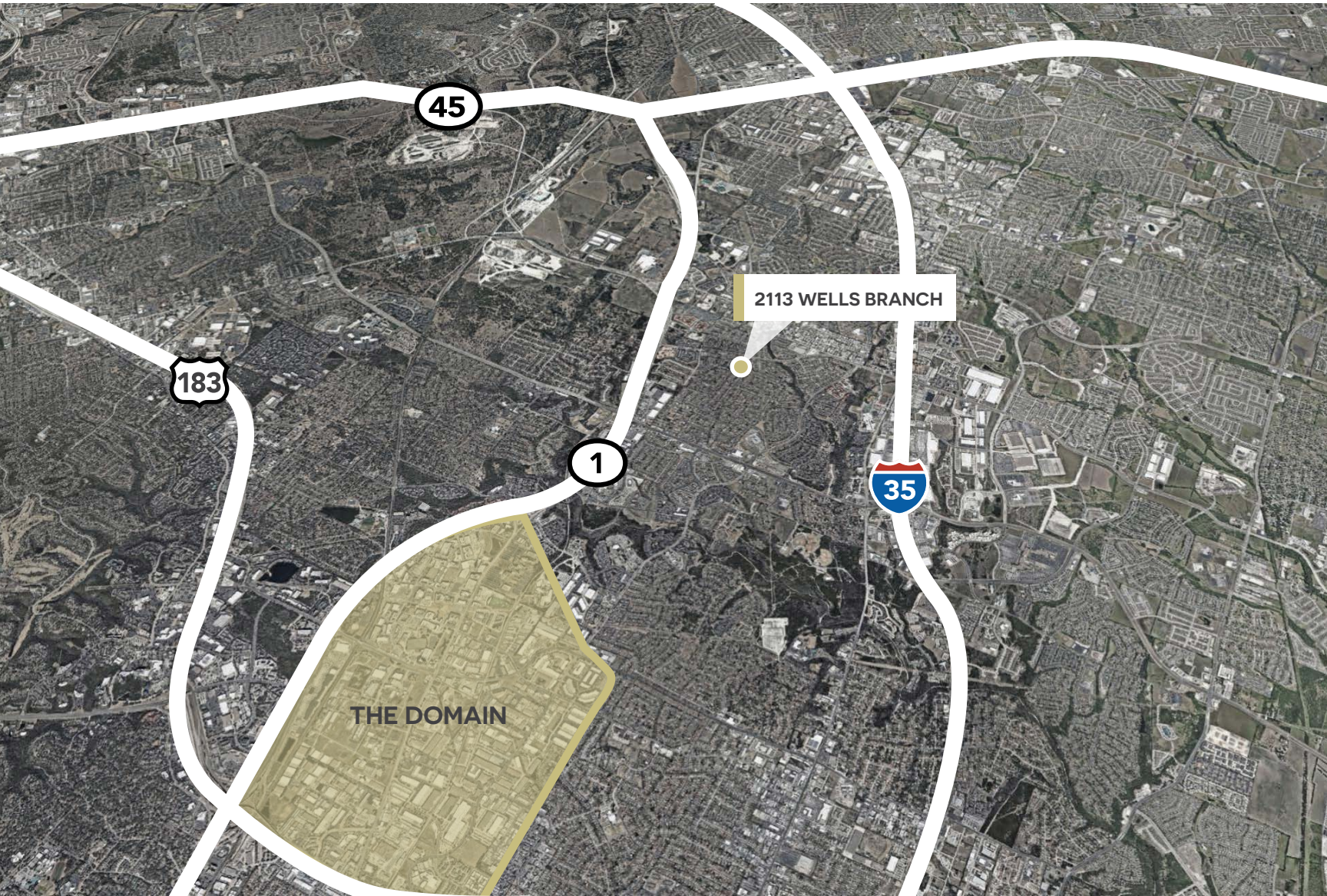


MITCHELL BECKER | mitchell.becker@streamrealty.com | 512.481.3012

LUKE WATSON | luke.watson@streamrealty.com | 512.481.3056

2113 WELLS BRANCH

2113 WELLS BRANCH PKWY
AUSTIN, TX 78728



DRIVE TIMES

Austin-Bergstrom International Airport	22 Minutes
Downtown Austin	17 Minutes
Rollingwood	18 Minutes

The Domain	10 Minutes
The Arboretum	10 Minutes
San Antonio	1.5 Hours



MITCHELL BECKER | mitchell.becker@streamrealty.com | 512.481.3012
LUKE WATSON | luke.watson@streamrealty.com | 512.481.3056



MITCHELL BECKER | mitchell.becker@streamrealty.com | 512.481.3012

LUKE WATSON | luke.watson@streamrealty.com | 512.481.3056