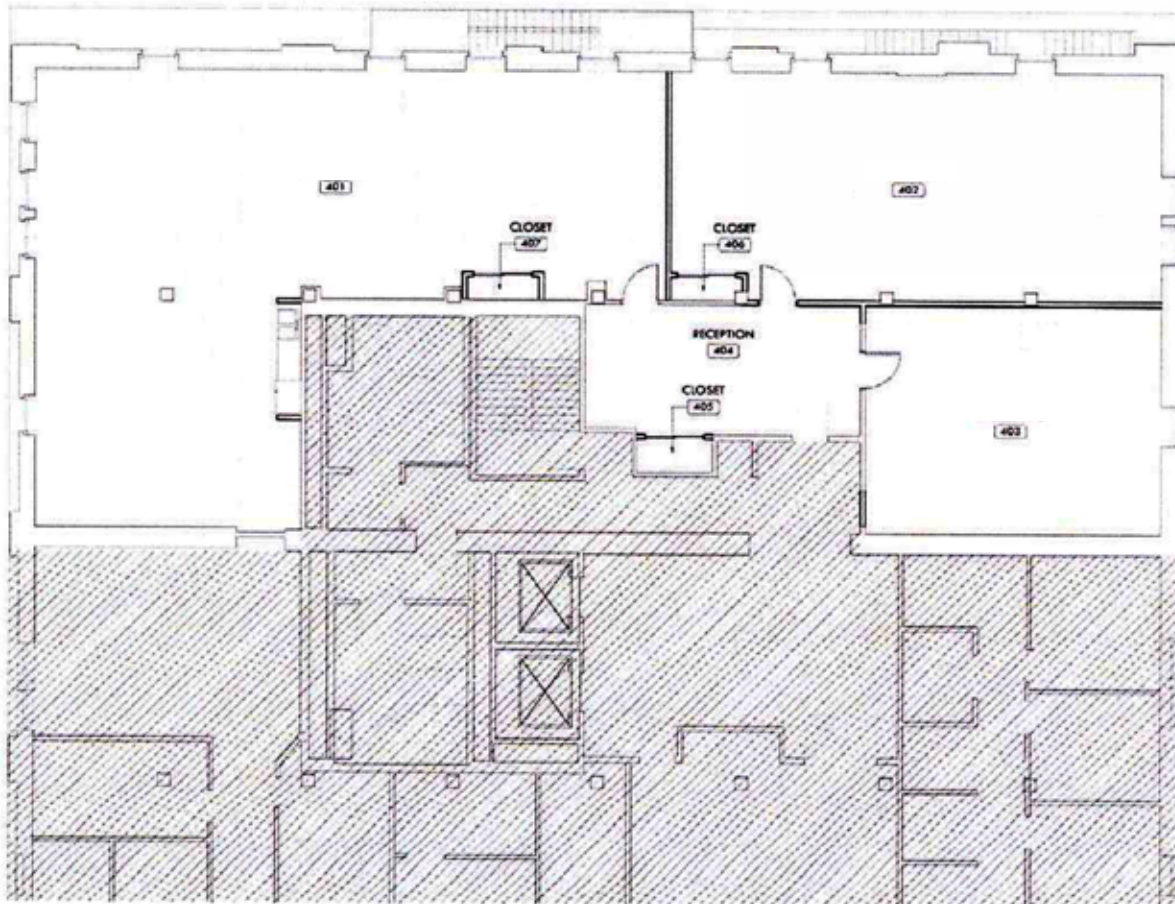


313 CONGRESS

PART OF THE BRICKS AT FORT POINT

4TH FLOOR 3,995 SF



LEASING CONTACT INFORMATION

SUZANNE BROWN

+1 617 912 6931

suzanne.brown@cbre.com

KEVIN KENNEDY

+1 617 912 7058

kevin.kennedy@cbre.com

JON FRENI

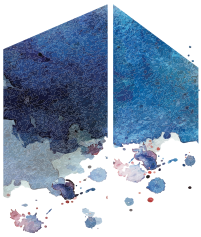
+1 617 912 7044

jonathan.freni@cbre.com

© 2021 CBRE, Inc. This information has been obtained from sources believed reliable. We have not verified it and make no guarantee, warranty or representation about it. Any projections, opinions, assumptions or estimates used are for example only and do not represent the current or future performance of the property. You and your advisors should conduct a careful, independent investigation of the property to determine to your satisfaction the suitability of the property for your needs. Photos herein are the property of their respective owners and use of these images without the express written consent of the owner is prohibited.

CBRE and the CBRE logo are service marks of CBRE, Inc. and/or its affiliated or related companies in the United States and other countries. All other marks displayed on this document are the property of their respective owners.

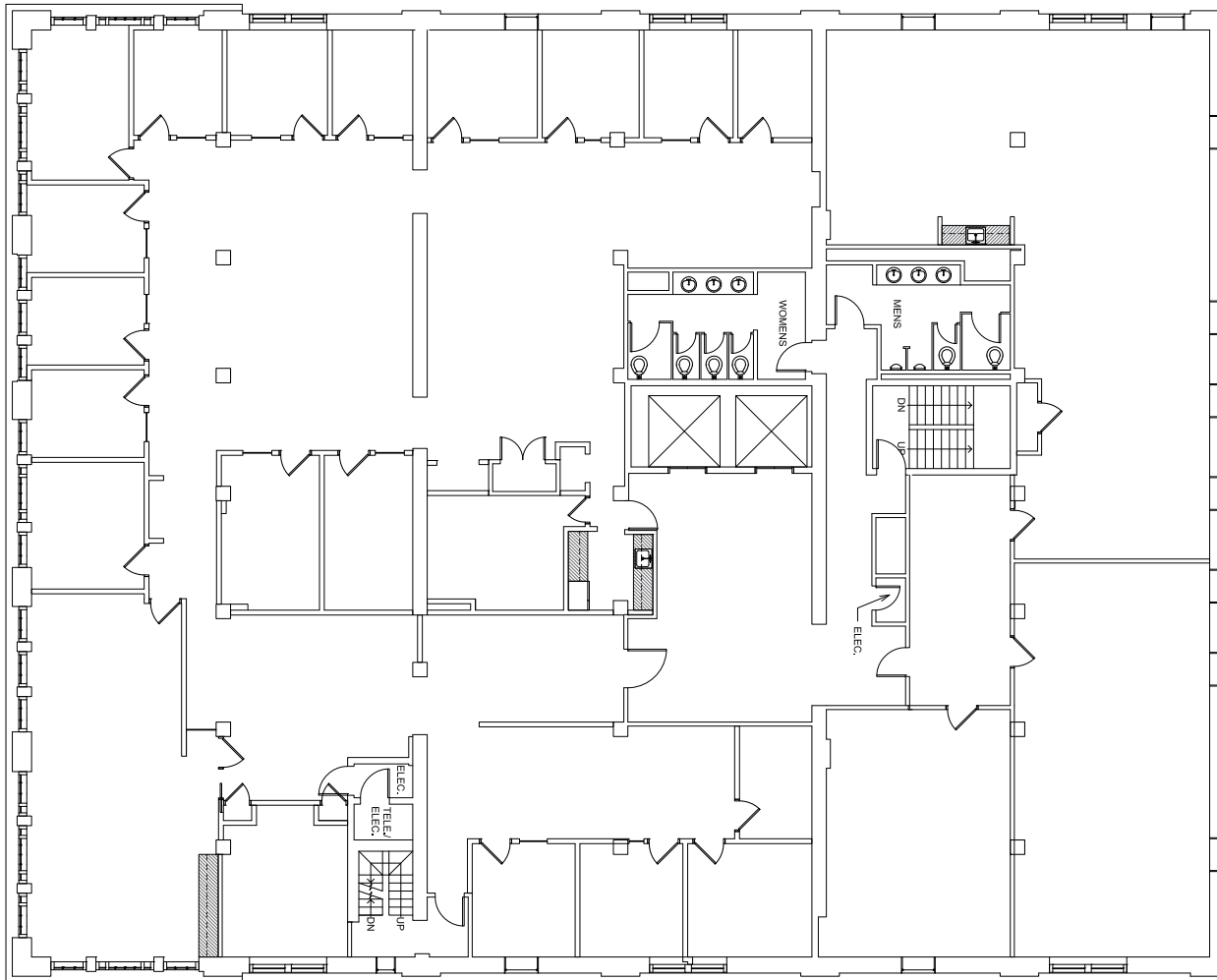
CBRE



313 CONGRESS

PART OF THE BRICKS AT FORT POINT

4TH FLOOR 12,353 SF



LEASING CONTACT INFORMATION

SUZANNE BROWN

+1 617 912 6931

suzanne.brown@cbre.com

KEVIN KENNEDY

+1 617 912 7058

kevin.kennedy@cbre.com

JON FRENI

+1 617 912 7044

jonathan.freni@cbre.com

© 2021 CBRE, Inc. This information has been obtained from sources believed reliable. We have not verified it and make no guarantee, warranty or representation about it. Any projections, opinions, assumptions or estimates used are for example only and do not represent the current or future performance of the property. You and your advisors should conduct a careful, independent investigation of the property to determine to your satisfaction the suitability of the property for your needs. Photos herein are the property of their respective owners and use of these images without the express written consent of the owner is prohibited.

CBRE and the CBRE logo are service marks of CBRE, Inc. and/or its affiliated or related companies in the United States and other countries. All other marks displayed on this document are the property of their respective owners.

CBRE