

Fully conditioned flex space in the heart of West Ashley

Move-in ready, ±2,000 sf warehouse/office space

FOR LEASE

7 Amy Elsey Drive | Charleston, SC 29407

For more
information

Bryse Ranniello
Associate
+1 215 595 5139
bryse.ranniello@avisonyoung.com

**AVISON
YOUNG**

Property overview

7 Amy Elsey Dr | Charleston, SC

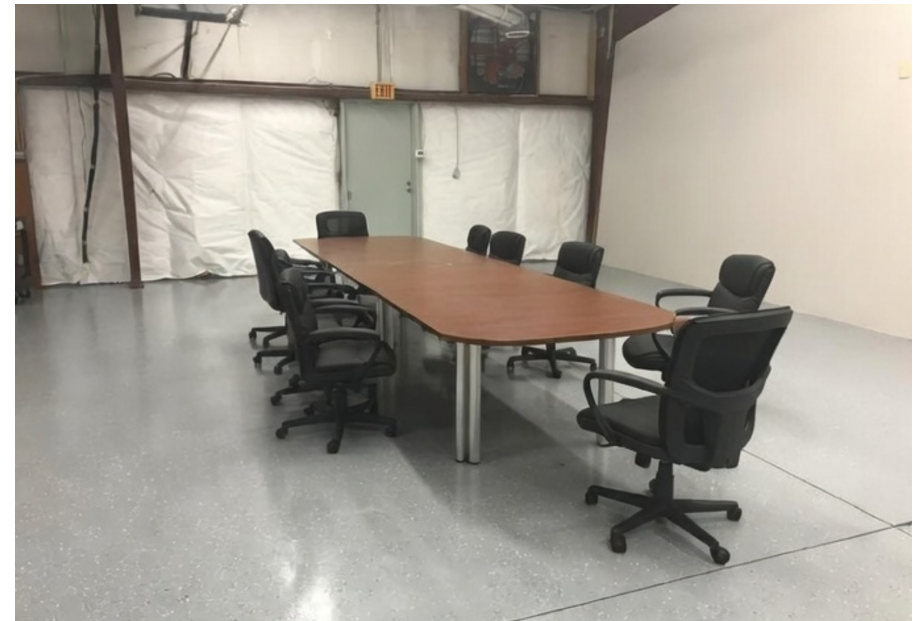
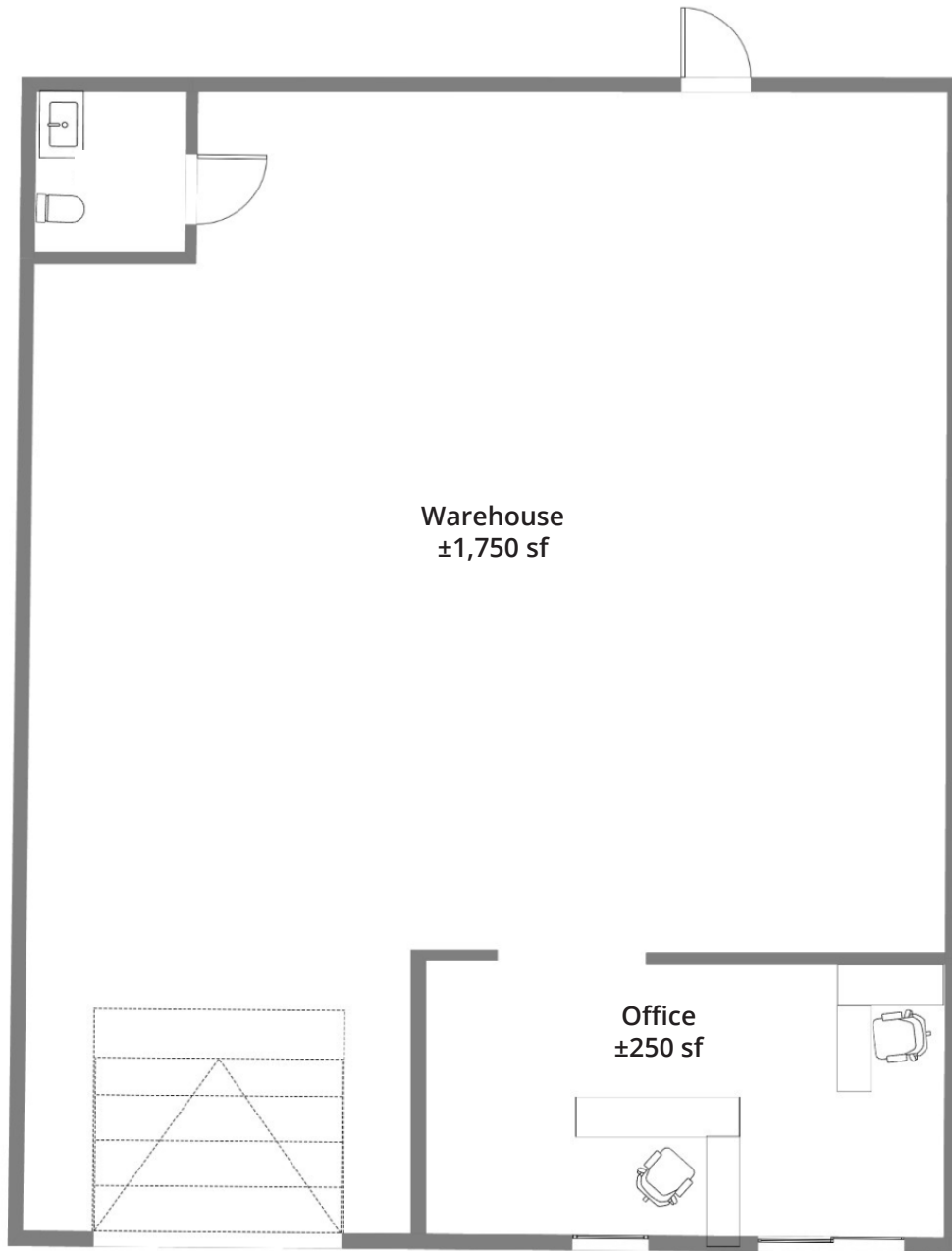
Total building size	±10,050 sf
Available suite	C
Available size	±2,000 sf
Warehouse space	±1,750 sf
Office space	±250 sf
Lease rate	\$20/sf/year
Lease type	Modified gross
Year built	1992
TMS	3511500057
Zoning	General Business
County	Charleston
Municipality	West Ashley
Drive-in doors	(1) 10' x 12'
Heating/cooling	Fully conditioned
Power	Single phase
Ventilation type	Exhaust fans

Highlights

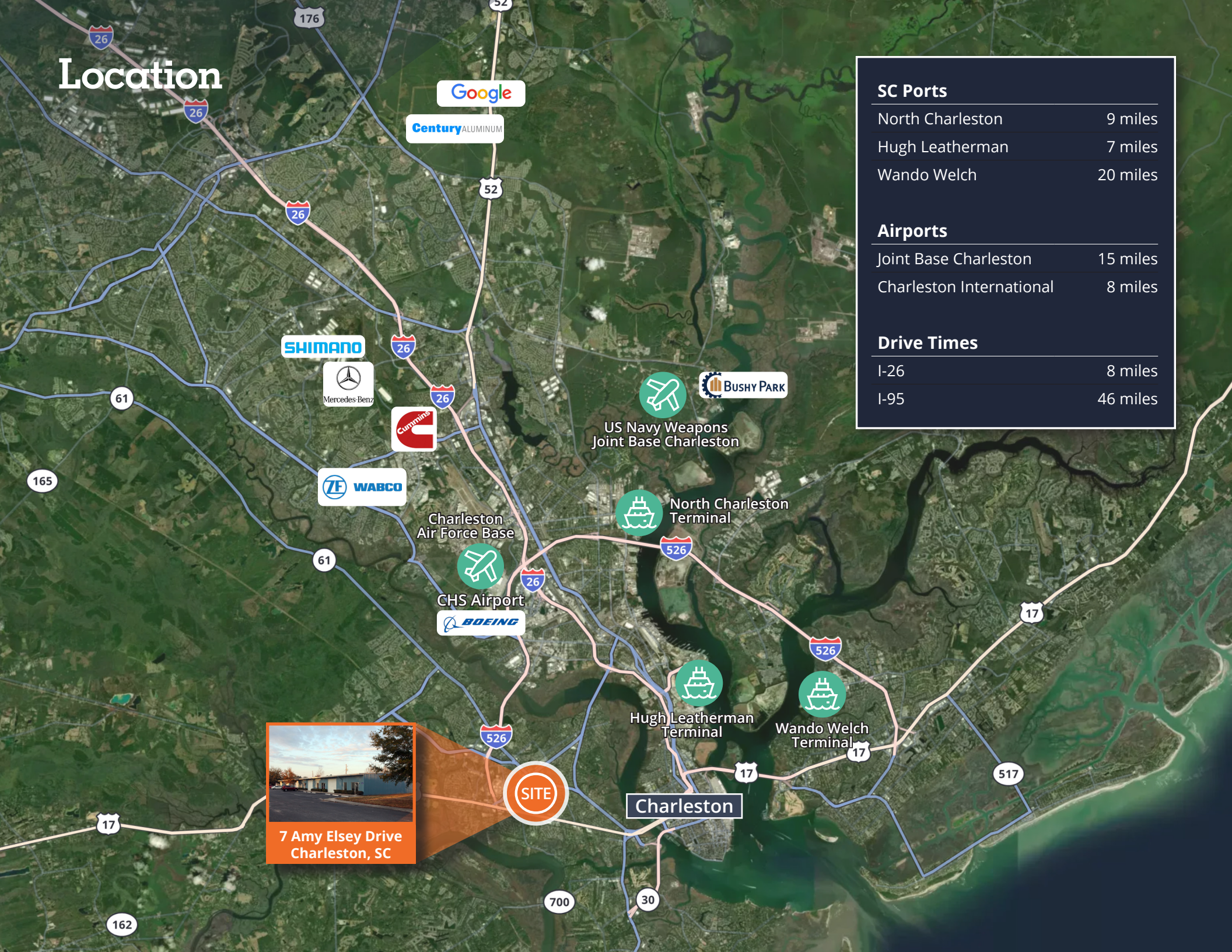
- Fully conditioned warehouse/office space features a private office, private restroom, and drive-in access via 12- x 10' roll-up door
- Functional & flexible layout suitable for a variety of light industrial, storage or contractor uses
- Prime West Ashley location, situated off Sam Rittenberg Blvd
- Easy access to I-526 and Savannah Highway
- 8 miles from Downtown Charleston
- 6 miles from North Charleston



Floorplan & photos



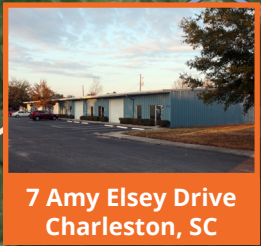
Location



SC Ports	
North Charleston	9 miles
Hugh Leatherman	7 miles
Wando Welch	20 miles

Airports	
Joint Base Charleston	15 miles
Charleston International	8 miles

Drive Times	
I-26	8 miles
I-95	46 miles



7 Amy Elsey Drive
Charleston, SC

SITE

Charleston

**AVISON
YOUNG**



Get in touch

Bryse Ranniello

Associate

+1 215 595 5139

bryse.ranniello@avisonyoung.com

Avison Young - South Carolina, Inc. | 40 Calhoun Steet, Suite 350 | Charleston, SC 29401

© 2026. Avison Young. Information contained herein was obtained from sources deemed reliable and, while thought to be correct, have not been verified. Avison Young does not guarantee the accuracy or completeness of the information presented, nor assumes any responsibility or liability for any errors or omissions therein.