

FOR LEASE



260 E 15th AVENUE - EUGENE, OREGON 97401

## PROFESSIONAL OFFICE SPACE

- **Central Eugene Location** between downtown, campus, and South Eugene
- **Quiet Garden-Style Setting** in a professional office complex
- **Ample On-Site Parking** and building signage available
- **Suite A:** Reception area, 3 private offices, conference room with coffee bar, and private restroom  
**Lease Rate: \$1,407 per month, gross**
- **2nd Floor Walk-Up Creative Loft:** 2 open offices, creative space, kitchenette and private restroom  
**Lease Rate: \$1,100 per month, gross**

**SUZANNE KINTZLEY**  
suzannek@campbellre.com  
(541) 915-6009

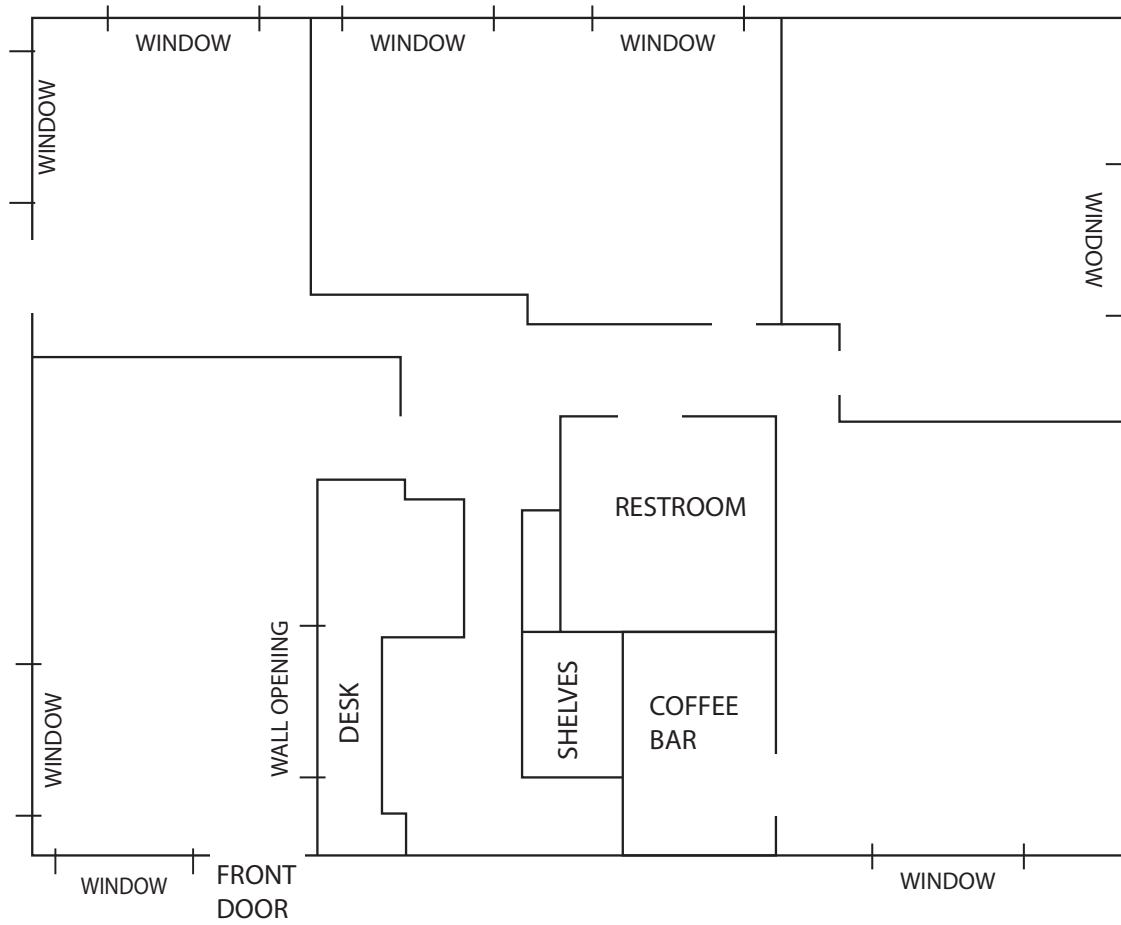
Licensed in the State of Oregon



**ABBY HYLAND-SCOTT**  
abby@campbellre.com  
(541) 556-4813

Licensed in the State of Oregon

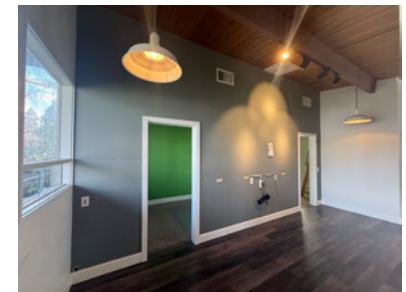
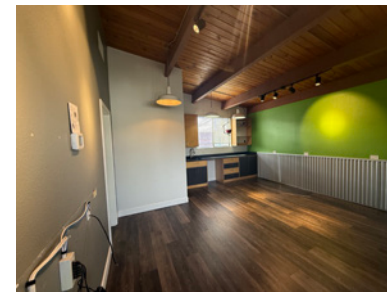
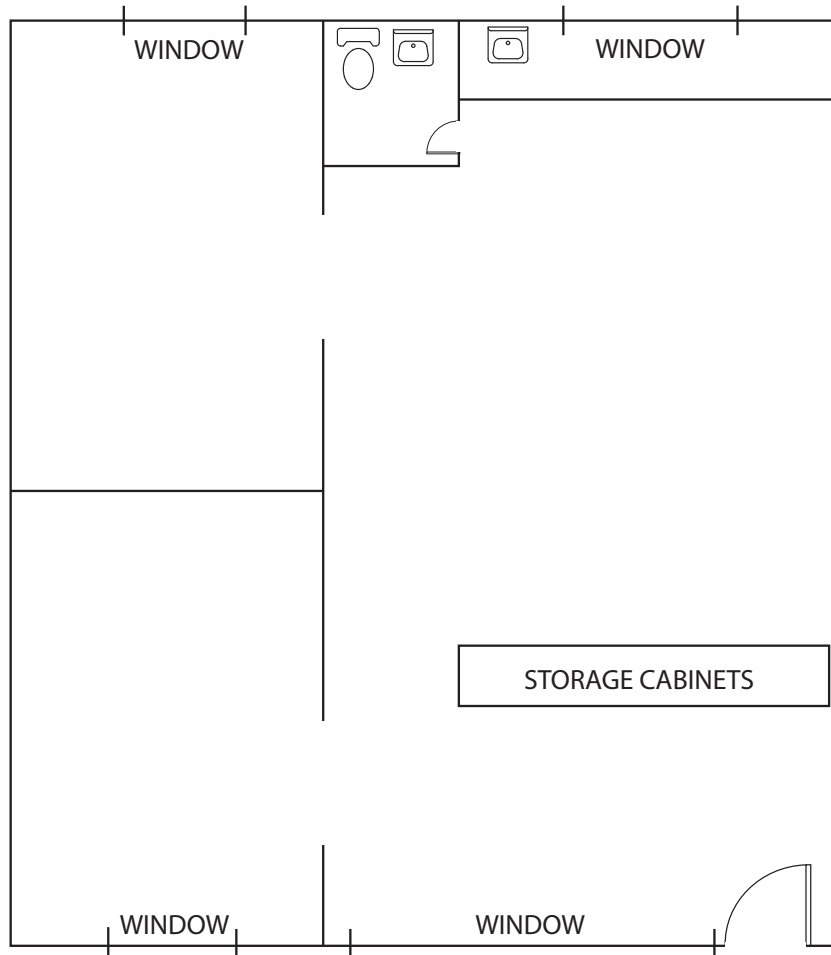
# 1ST FLOOR SUITE A



The information in this package was obtained from sources deemed reliable, and is not guaranteed by agent. Package is subject to change, error or omission, prior sale or lease, correction or withdrawal. Any party contemplating purchase is urged to conduct their own independent study and inspection.

## 2ND FLOOR WALK-UP

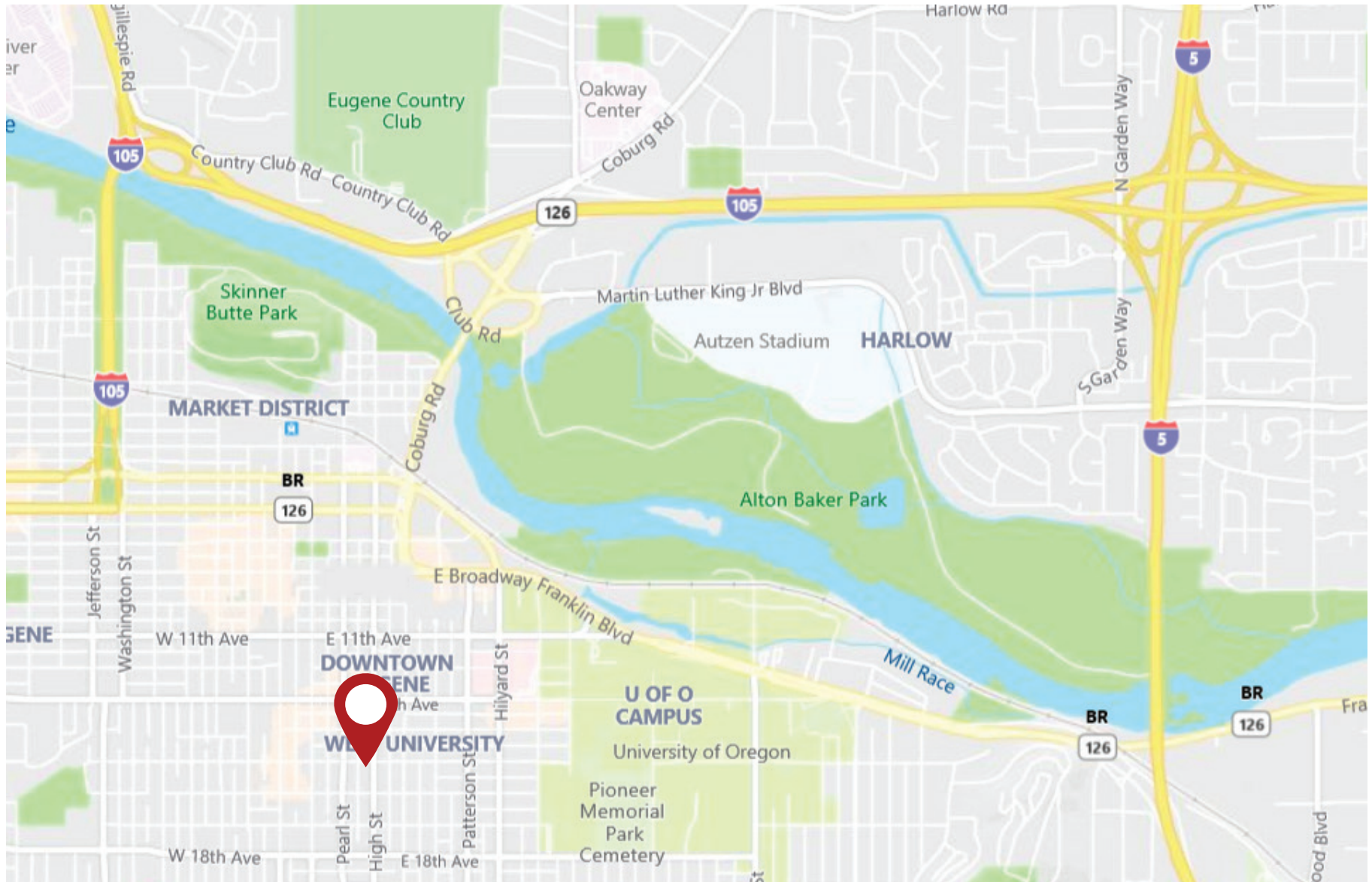
---



The information in this package was obtained from sources deemed reliable, and is not guaranteed by agent. Package is subject to change, error or omission, prior sale or lease, correction or withdrawal. Any party contemplating purchase is urged to conduct their own independent study and inspection.

# PROPERTY LOCATION

---



The information in this package was obtained from sources deemed reliable, and is not guaranteed by agent. Package is subject to change, error or omission, prior sale or lease, correction or withdrawal. Any party contemplating purchase is urged to conduct their own independent study and inspection.