

FOR LEASE

132 NELL DEANE BLVD, SCHERTZ, TX 78154



5,400 SF Office/Warehouse

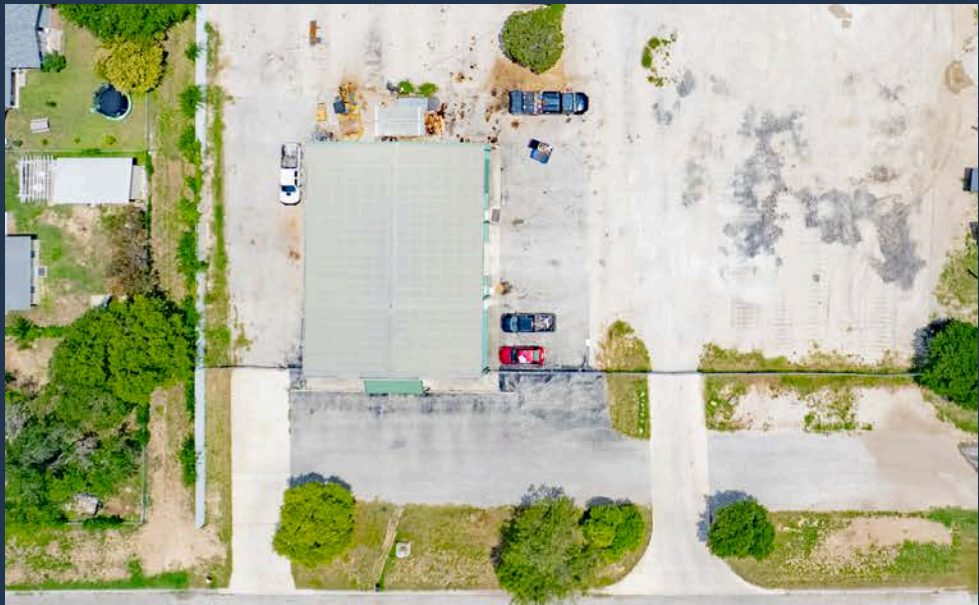
ABOUT THE PROPERTY:

132 Nell Deane Blvd is a 5,400 SF industrial warehouse project on a 2.980 site in the Guadalupe County Submarket of Schertz, TX. Tenants benefit from a fully fenced and secure site, 1,600 SF of office, 3,200 SF of warehouse, four (4) grade-level doors, and close proximity to FM-1518, FM-78, Loop 1604, IH-35, and Randolph Air Force Base.

FEATURES:

- 5,400 SF (incl. 1,600 SF office)
- 2.980-acre site
- Four (4) grade-level doors (10'x12')
- Fenced and secure site
- Proximity to FM-1518, FM-78, Loop 1604, IH-35, and Randolph Air Force Base

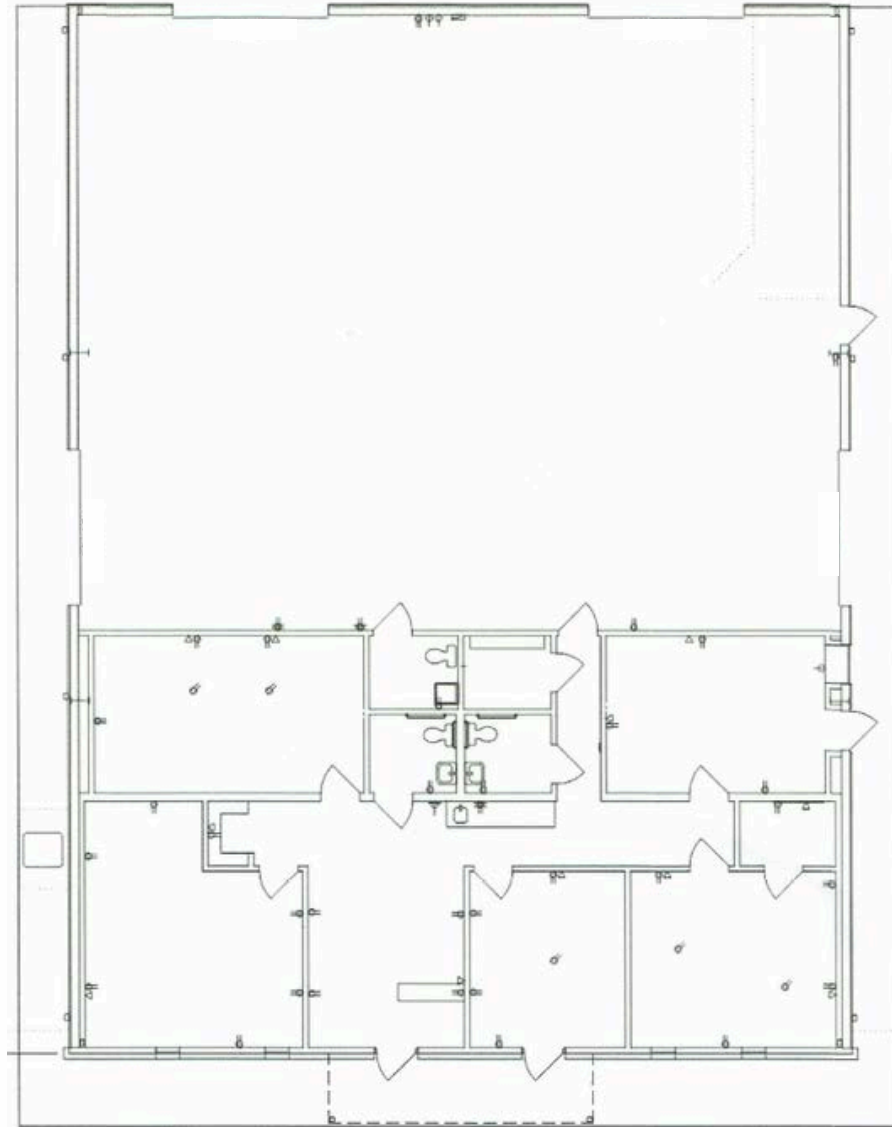
EXTERIOR PHOTOS



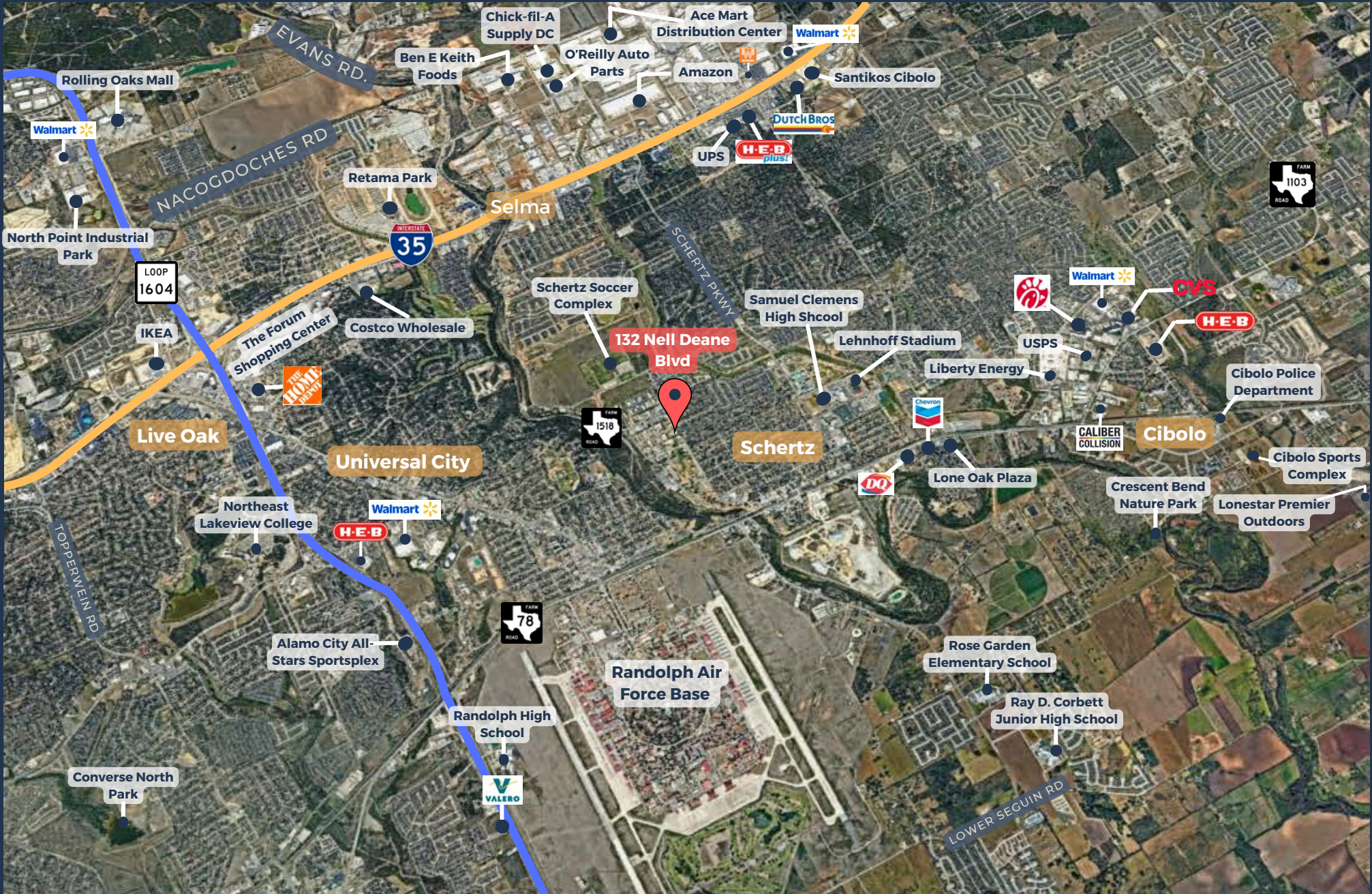
INTERIOR PHOTOS



FLOOR PLAN



AREA DETAILS & OVERVIEW





CONTACT OUR TEAM



Colin McLellan

Partner

cmclellan@llanorealty.com

(210) 908-6345



Carson Byrd

Associate

cbyrd@llanorealty.com

(210) 941-0289



Jake Esparza

Associate

jesparza@llanorealty.com

(210) 874-5314