

204 Maple Drive
WYCKOFF, NJ 07481

5.6 Acres For Sale
Zoned for 61 Multi-Family Units



1 RENDERED FRONT ELEVATION
4-2009 SCALE: NTS.



2 RENDERED REAR ELEVATION
4-2009 SCALE: NTS.

Reduced
Price!

Outstanding Developer Opportunity!

Discover 5.6 acres in one of Bergen County's most sought-after communities, offering the rare chance to develop 61 luxury residential condominiums—51 of which are market-rate. Perfectly suited for empty nesters looking to stay close to home, this prime location combines upscale living with small-town charm. Zoning is in place. This is an opportunity for visionary developers.

Price/Details Upon Request
NDA Required (click here)

📍 For more information
John J. Schilp, Senior Vice President
973 463 1011 x174 | jschilp@naihanson.com

NAI James E. Hanson
COMMERCIAL REAL ESTATE SERVICES, WORLDWIDE

FOLLOW US!     | Offices: Teterboro | Parsippany | Allentown • naihanson.com | naisummit.com • Member of NAI Global with 325+ Offices Worldwide

SERVICES OFFERED

Brokerage • Property Management • Corporate Services • Financing • Logistics • Healthcare • Tenant Representation • Cold Storage • Investment Services

THE INFORMATION CONTAINED HEREIN HAS BEEN OBTAINED FROM SOURCES CONSIDERED TO BE RELIABLE, BUT NO GUARANTEE OF ITS ACCURACY IS MADE BY NAI JAMES E. HANSON.

204 Maple Drive WYCKOFF, NJ 07481

Rendered Elevations

1 RENDERED FRONT
SCALE: NTS.

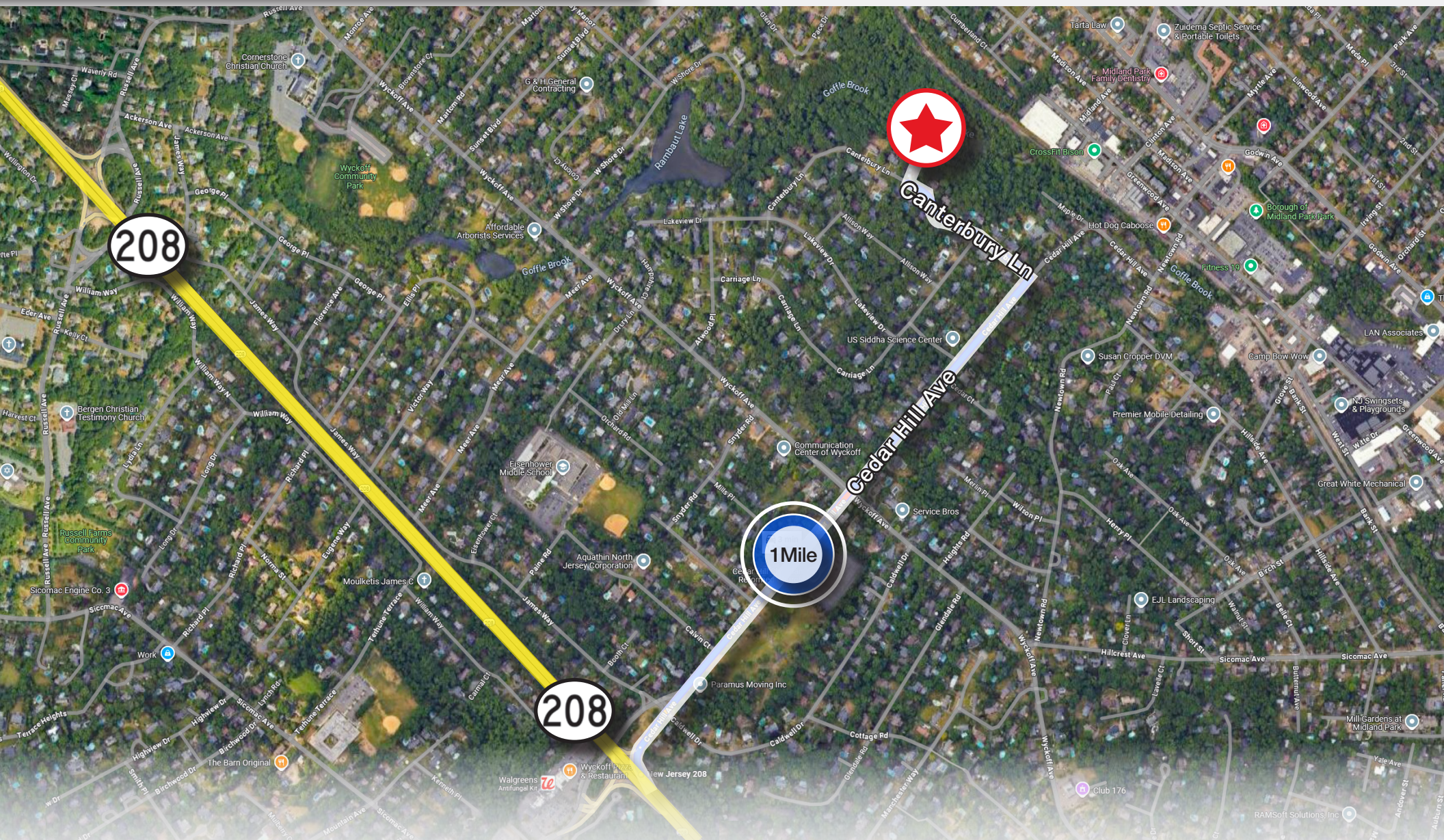


2 RENDERED REAR ELEVATION
SCALE: NTS.



204 Maple Drive WYCKOFF, NJ 07481

Local
Aerial



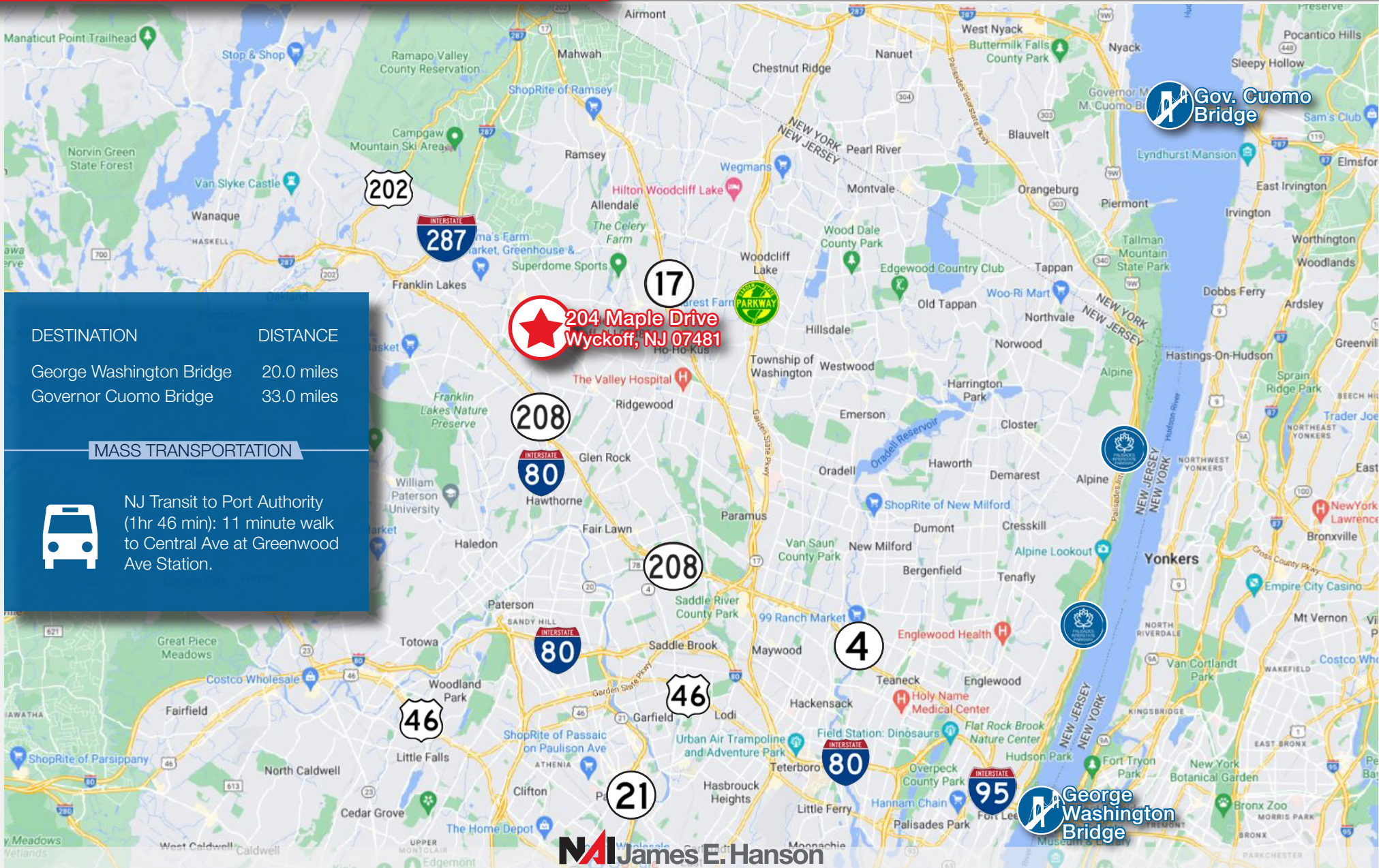
204 Maple Drive
WYCKOFF, NJ 07481

Aerial
Parcel Overlay



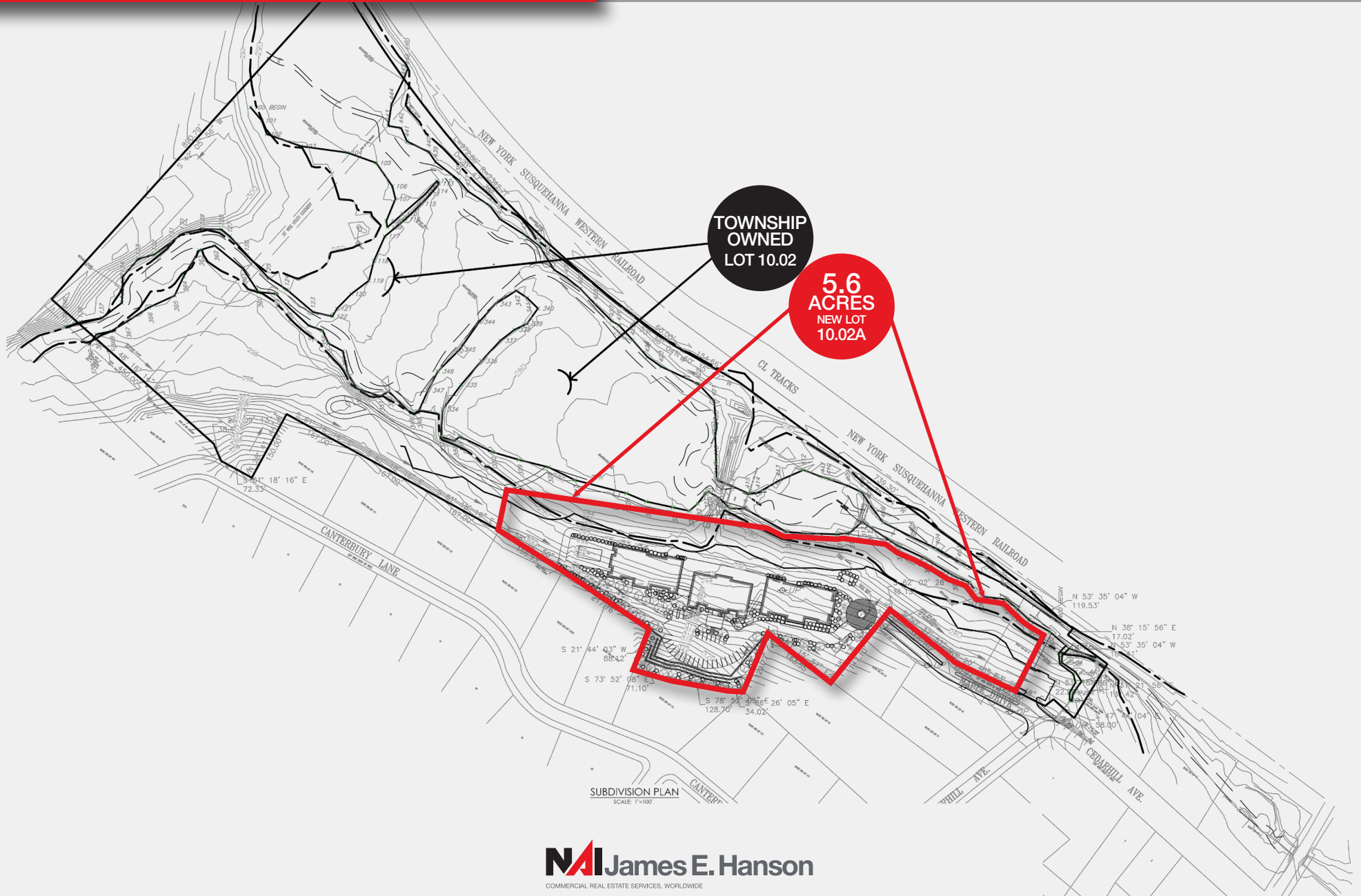
204 Maple Drive WYCKOFF, NJ 07481

Road Map



204 Maple Drive WYCKOFF, NJ 07481

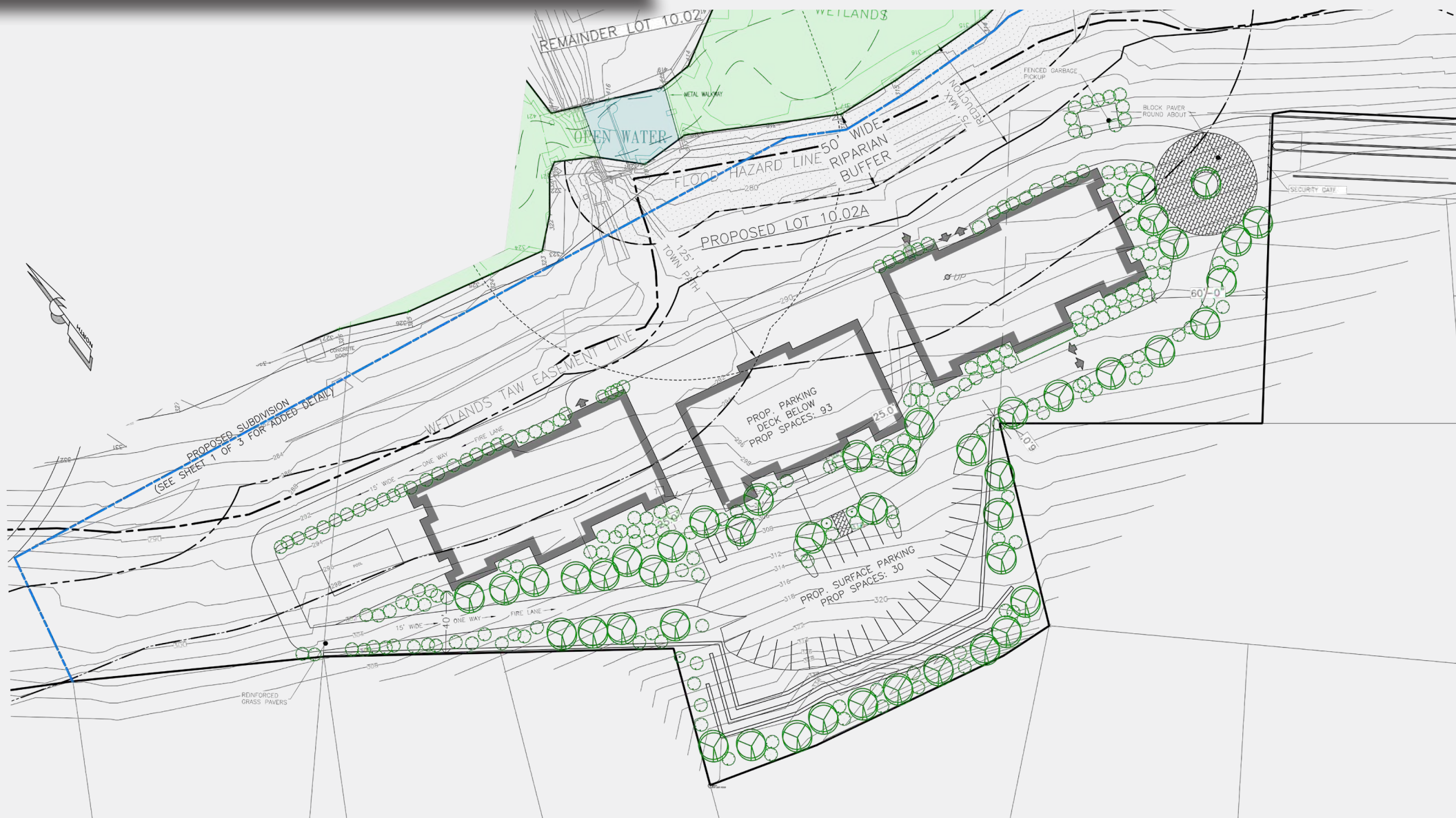
Site Plan



THE INFORMATION CONTAINED HEREIN HAS BEEN OBTAINED FROM SOURCES CONSIDERED TO BE RELIABLE, BUT NO GUARANTEE OF ITS ACCURACY IS MADE BY NAI JAMES E. HANSON.

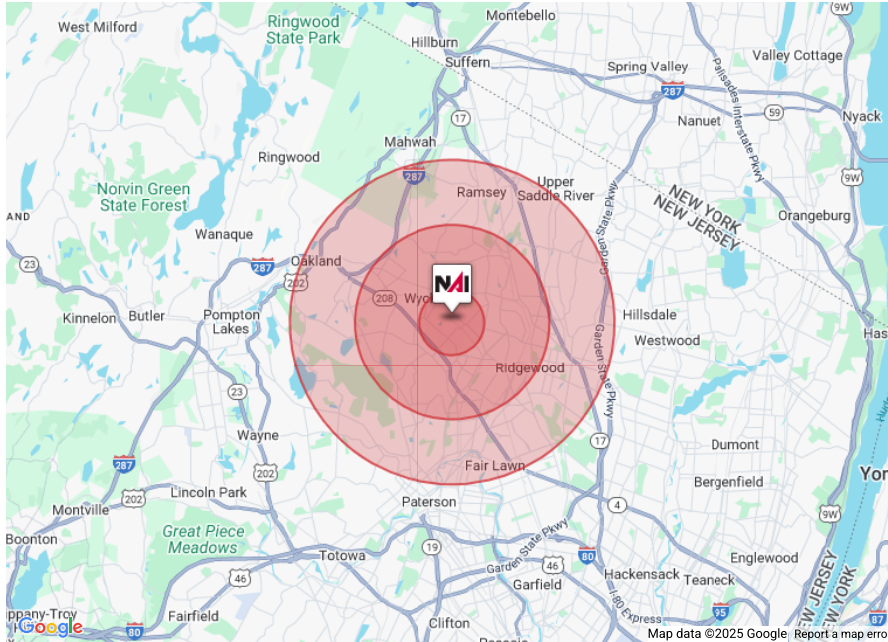
204 Maple Drive WYCKOFF, NJ 07481

Concept Development Plan



204 Maple Drive WYCKOFF, NJ 07481

Demographics 1-3-5 Miles



	1 Miles	3 Miles	5 Miles
Total households	3,378	29,654	76,876
Total population	9,309	84,045	221,811
Population white	83.9%	77.4%	68.5%
Population black	0.6%	1.6%	3.4%
Population hispanic	8.9%	11.5%	18.0%
Population asian	5.2%	8.3%	10.0%
Population pacific islander	0.0%	0.0%	0.0%

	1 Miles	3 Miles	5 Miles
Population american indian	0.1%	0.2%	0.4%
Population other	2.0%	3.1%	7.8%
Persons per household	2.8	2.8	2.9
Average household income	\$199,403	\$221,748	\$205,170
Average house value	\$884,421	\$920,737	\$808,074
Average age	43	43	42
Average age male	42	41	41
Average age female	44	44	43

Demographics data derived from AlphaMap

