



LEFAVI FINANCIAL CENTER

2319 - 2323 South Foothill Blvd, Salt Lake City, UT 84109

PROPERTY DESCRIPTION:

- Amazing Freeway Access
- Fantastic Valley Views
- 4 / 1,000 SF Parking
- Located on Bonneville Trail for Biking and Hiking
- Building Upgrades Planned

LEASE RATE:

\$19.95 - \$21.95 SF/YR
(Full Service)

PROPERTY DETAILS:

Suite 285: 2,195 SF

SCOTT INGHAM, MBA

801.243.9999
swi@xmission.com

51 East 400 South Suite 210
Salt Lake City, UT 84111
801.355.0600 | iproperties.com



PROPERTY DESCRIPTION

Landlord seeking longer term deals - Several size suites and configurations.

SPACES	LEASE RATE	SPACE SIZE
Suite 285	\$19.95 - 21.95 SF/yr	2,195 SF

OFFERING SUMMARY

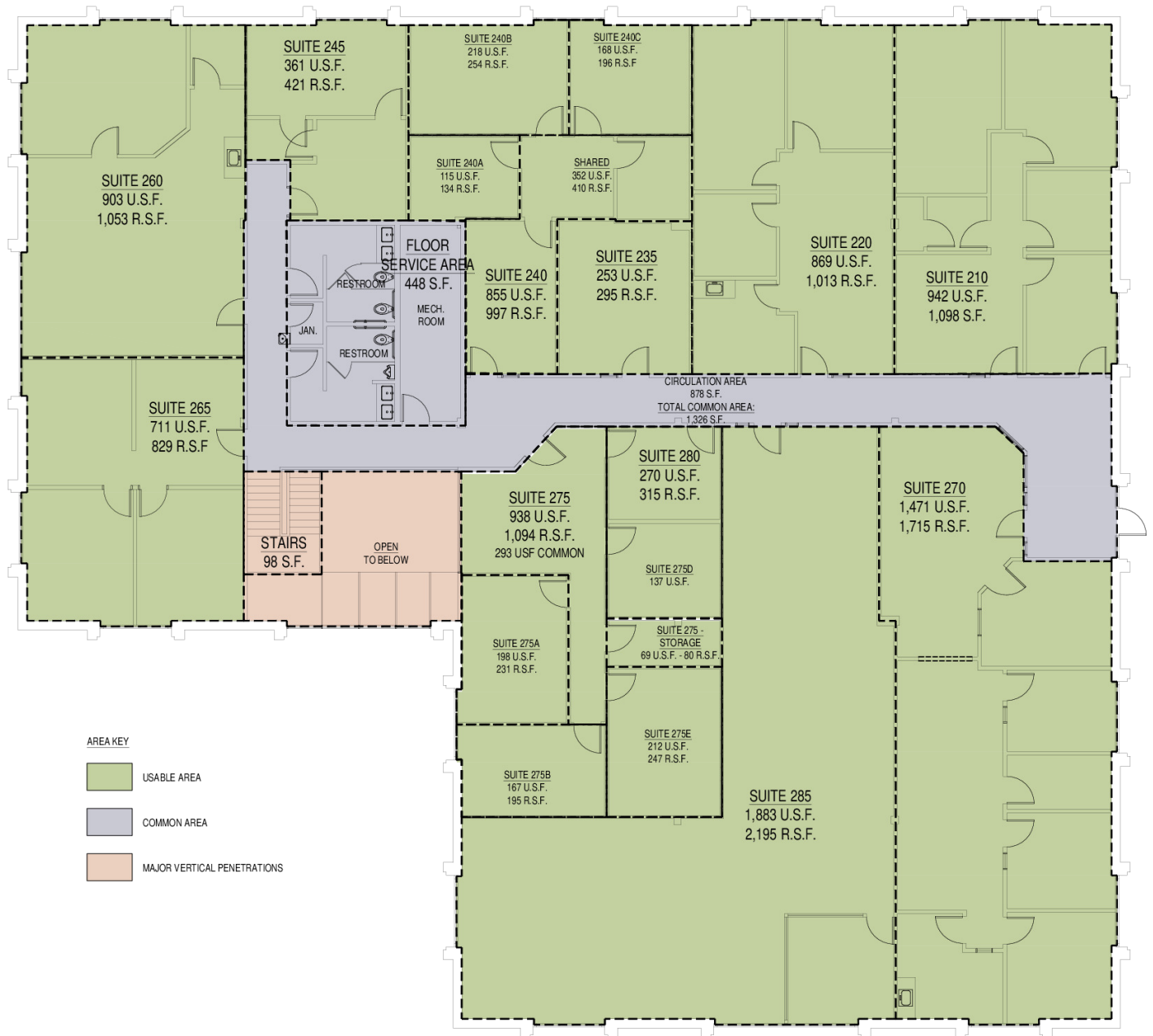
Lease Rate:	\$19.95-21.95 SF/yr (Full Service)
Available SF:	2,195 SF
Lot Size:	2.65 Acres
Building Size:	21,390 SF

DEMOGRAPHICS	1 MILE	3 MILES	5 MILES
Total Households	3,739	31,280	84,883
Total Population	9,933	82,579	209,217
Average HH Income	\$98,901	\$88,825	\$74,452

SCOTT INGHAM, MBA

801.243.9999
swi@xmission.com

51 East 400 South Suite 210
Salt Lake City, UT 84111
801.355.0600 | iproperties.com



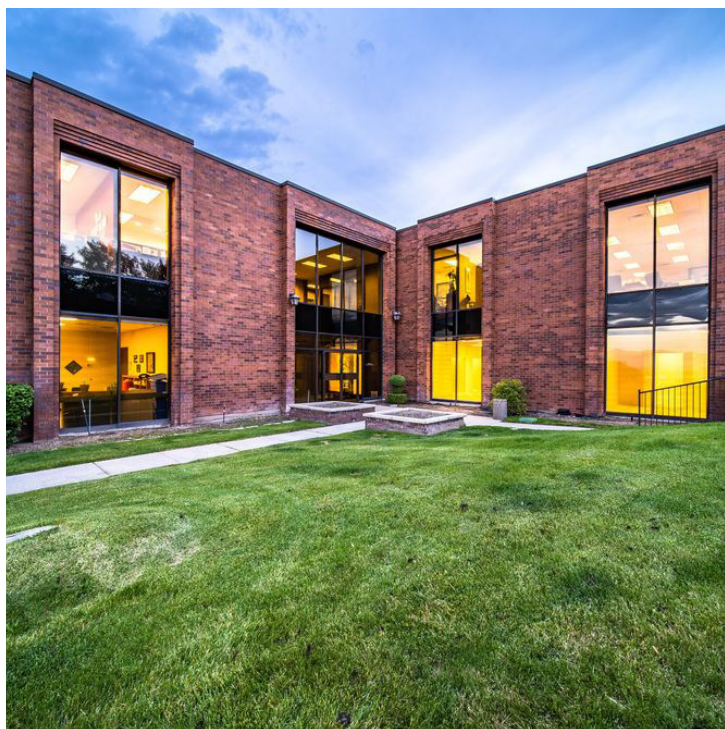
LEFAVI NORTH BUILDING - 2ND FLOOR PLAN

SCALE: 1/8"=1'-0"

SCOTT INGHAM, MBA

801.243.9999
swi@xmission.com

51 East 400 South Suite 210
Salt Lake City, UT 84111
801.355.0600 | iproperties.com



SCOTT INGHAM, MBA

801.243.9999
swi@xmission.com

51 East 400 South Suite 210
Salt Lake City, UT 84111
801.355.0600 | iproPERTIES.com



FOR LEASE



Map data ©2024 Google Imagery ©2024 Airbus, Landsat / Copernicus, Maxar Technologies, USDA/FPAC/GEO

801.243.9999
swi@xmission.com

51 East 400 South Suite 210
Salt Lake City, UT 84111
801.355.0600 | iproperties.com

*This information is provided with the understanding that any negotiations relating to the property will be conducted through InterNet Properties, Inc. This description is based on information we believe to be reliable but cannot guarantee.