

**FOR LEASE**  
629-639 J Street  
San Diego, CA 92101



# Creative Office Space For Lease

**EMMETT CAHILL**  
619.243.8470  
ecahill@qfcre.com  
BRE #02033604

**PETER WRIGHT**  
619.243.8450  
pwright@qfcre.com  
BRE #01846272

**DOMINICK MARTINEZ**  
619.243.8468  
dmartinez@qfcre.com  
BRE #02191570

The information contained here has been obtained from sources considered to be reliable, but no guarantee of its accuracy is made by this company. In addition, no representation is made respecting zoning, condition of title, dimensions or any matters of a legal or environmental nature. Such matters should be referred to legal counsel for determination. Terms and conditions are subject to change without prior notice. Subject to errors and omissions.





## SPACE AVAILABLE

3,650 SF

## LEASE RATE

\$2.00 + Electric

## PROPERTY HIGHLIGHTS

- Three private offices
- Conference room
- Two kitchens/break areas
- Reception & waiting area
- Rich hardwood floors
- 10' ceilings & operable windows



**EMMETT CAHILL**  
619.243.8470  
ecahill@qfcre.com  
BRE #02033604

**PETER WRIGHT**  
619.243.8450  
pwright@qfcre.com  
BRE #01846272

**DOMINICK MARTINEZ**  
619.243.8468  
dmartinez@qfcre.com  
BRE #02191570

The information contained here has been obtained from sources considered to be reliable, but no guarantee of its accuracy is made by this company. In addition, no representation is made respecting zoning, condition of title, dimensions or any matters of a legal or environmental nature. Such matters should be referred to legal counsel for determination. Terms and conditions are subject to change without prior notice. Subject to errors and omissions.





## PHOTOS



**EMMETT CAHILL**  
619.243.8470  
ecahill@qfcre.com  
BRE #02033604

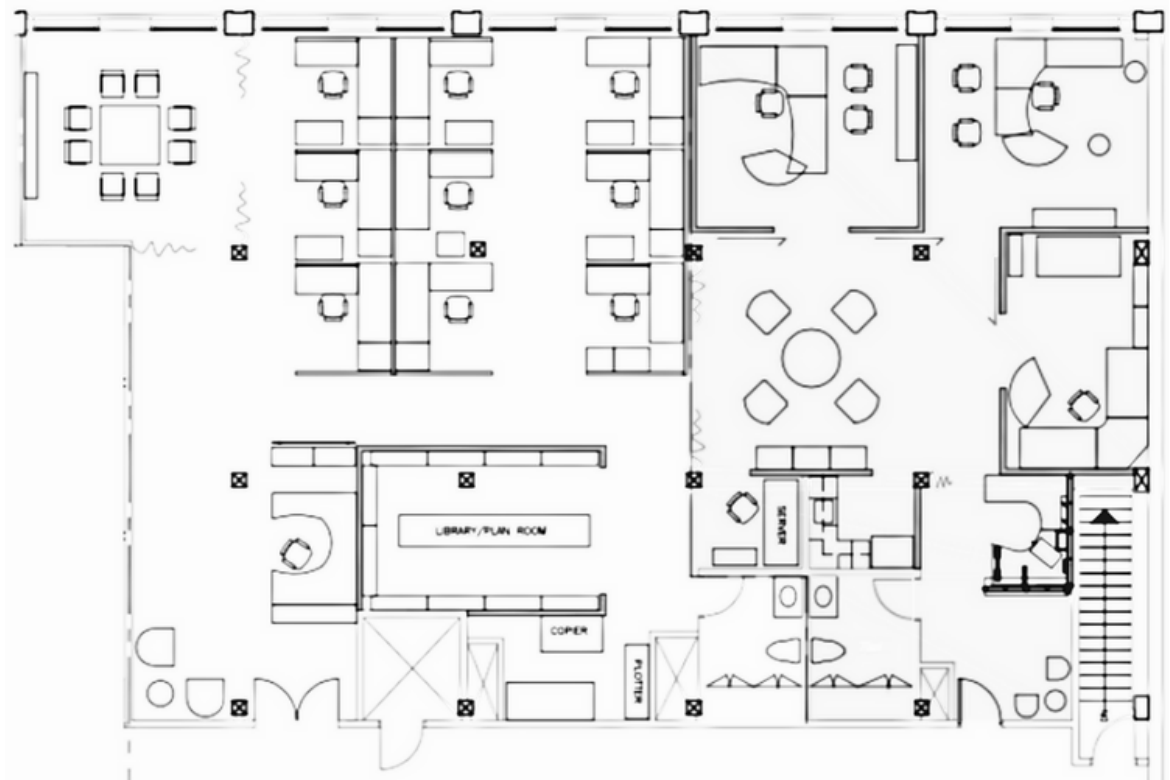
**PETER WRIGHT**  
619.243.8450  
pwright@qfcre.com  
BRE #01846272

**DOMINICK MARTINEZ**  
619.243.8468  
dmartinez@qfcre.com  
BRE #02191570

*The information contained here has been obtained from sources considered to be reliable, but no guarantee of its accuracy is made by this company. In addition, no representation is made respecting zoning, condition of title, dimensions or any matters of a legal or environmental nature. Such matters should be referred to legal counsel for determination. Terms and conditions are subject to change without prior notice. Subject to errors and omissions.*



# FLOOR PLAN



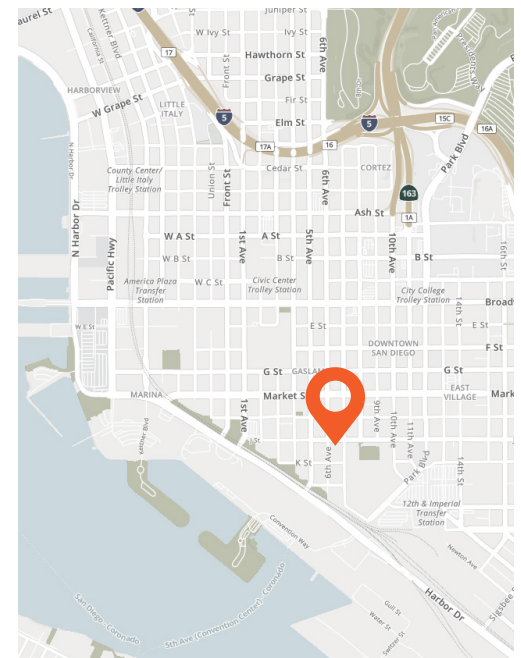
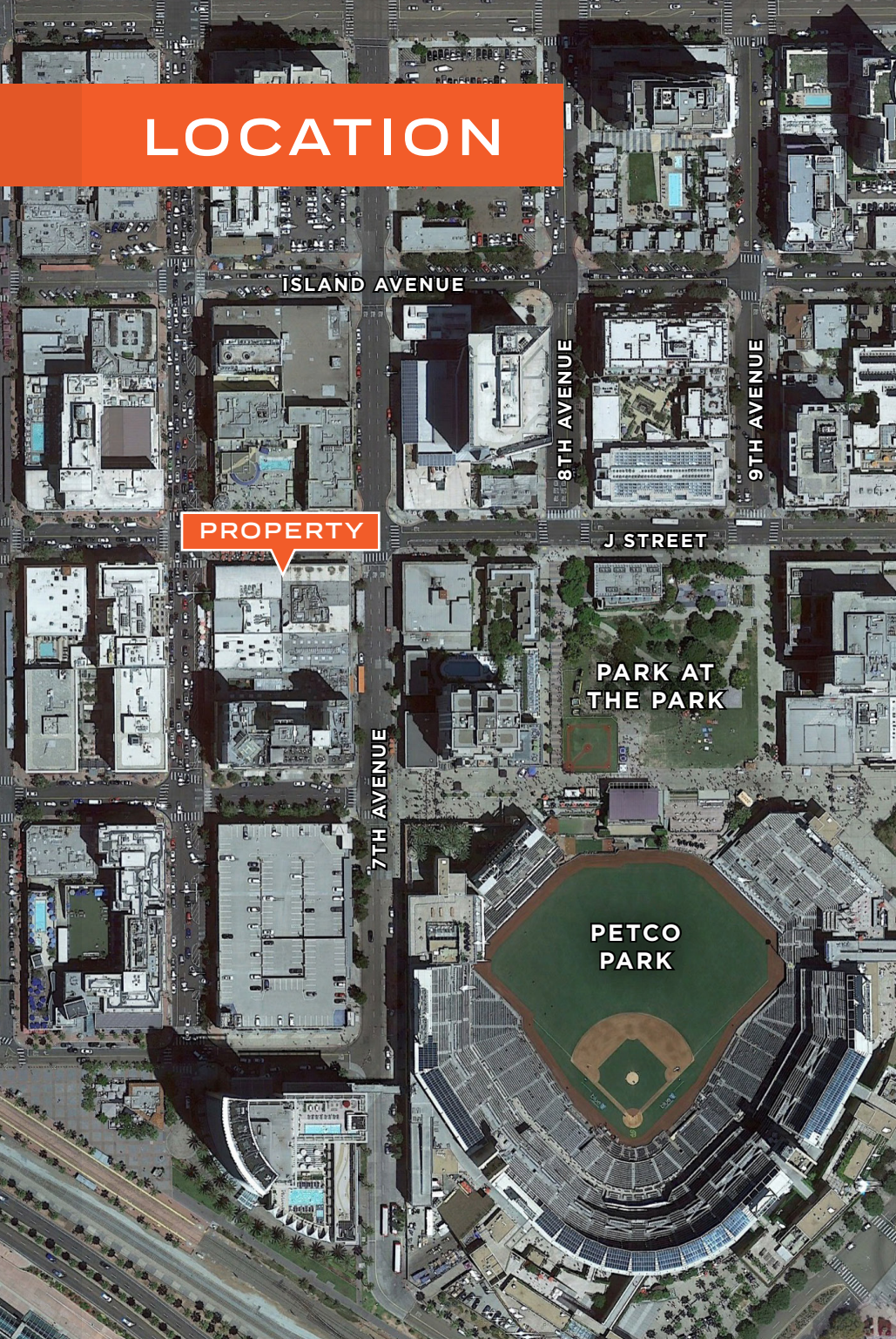
**EMMETT CAHILL**  
619.243.8470  
ecahill@qfcre.com  
BRE #02033604

**PETER WRIGHT**  
619.243.8450  
pwright@qfcre.com  
BRE #01846272

**DOMINICK MARTINEZ**  
619.243.8468  
dmartinez@qfcre.com  
BRE #02191570

*The information contained here has been obtained from sources considered to be reliable, but no guarantee of its accuracy is made by this company. In addition, no representation is made respecting zoning, condition of title, dimensions or any matters of a legal or environmental nature. Such matters should be referred to legal counsel for determination. Terms and conditions are subject to change without prior notice. Subject to errors and omissions.*

# LOCATION



## LOCATION HIGHLIGHTS

- One block from Petco Park, and close proximity to San Diego Convention Center, and the Rady Band Shell.
- Located in the Heart of Gaslamp Quarter, the property is within walking distance of the finest restaurants, shops and venues in the city.

## WALKING DISTANCE

to Numerous Restaurants & Retail

## STEPS TO

Petco Park & Trolley Station

**EMMETT CAHILL**  
619.243.8470  
ecahill@qfcre.com  
BRE #02033604

**PETER WRIGHT**  
619.243.8450  
pwright@qfcre.com  
BRE #01846272

**DOMINICK MARTINEZ**  
619.243.8468  
dmartinez@qfcre.com  
BRE #02191570

The information contained here has been obtained from sources considered to be reliable, but no guarantee of its accuracy is made by this company. In addition, no representation is made respecting zoning, condition of title, dimensions or any matters of a legal or environmental nature. Such matters should be referred to legal counsel for determination. Terms and conditions are subject to change without prior notice. Subject to errors and omissions.



**FOR LEASE**  
629-639 J Street  
San Diego, CA 92101



# Contact Information

**QFC REAL ESTATE**  
1495 Pacific Highway, Suite 450  
San Diego, CA 92101  
619.243.8454 • [qfcre.com](http://qfcre.com)

**EMMETT CAHILL**

619.243.8470  
[ecahill@qfcre.com](mailto:ecahill@qfcre.com)  
BRE #02033604

**PETER WRIGHT**

619.243.8450  
[pwright@qfcre.com](mailto:pwright@qfcre.com)  
BRE #01846272

**DOMINICK MARTINEZ**

619.243.8468  
[dmartinez@qfcre.com](mailto:dmartinez@qfcre.com)  
BRE #02191570

The information contained here has been obtained from sources considered to be reliable, but no guarantee of its accuracy is made by this company. In addition, no representation is made respecting zoning, condition of title, dimensions or any matters of a legal or environmental nature. Such matters should be referred to legal counsel for determination. Terms and conditions are subject to change without prior notice. Subject to errors and omissions.