



15894 HIGHWAY 17  
P.O. BOX 56  
HAMPSTEAD, NC 28443  
910/270-5100 FAX: 910/270-5110

# FOR LEASE

## INDUSTRIAL FLEX SPACE



**423 SHIPYARD BOULEVARD - UNIT C  
WILMINGTON, NORTH CAROLINA**

**This 2,462 square foot office/warehouse is move-in ready. Just down the street from the NC Ports, this location also provides ready access to the rest of New Hanover County. Zoned CS (Commercial Services), this property can be used for most commercial and industrial purposes.**

**CALL  
BRIAN NADEAU  
(910) 622-6258**

***Commercial & Investment Real Estate Specialists***

email: [info@creativecommercial.biz](mailto:info@creativecommercial.biz)  
[www.creativecommercial.biz](http://www.creativecommercial.biz)



# 423 SHIPYARD BOULEVARD - UNIT C

## UNIT C

- 2,462 Square Feet
  - 1,592 Square Foot Warehouse
  - 870 Square Foot Office
- Two Restrooms
- 10' x 10' Overhead Door
- New Flooring in Offices
- Commercial Services (CS) Zoning
- Municipal Water & Sewer - Individually Metered



## THE BUILDING

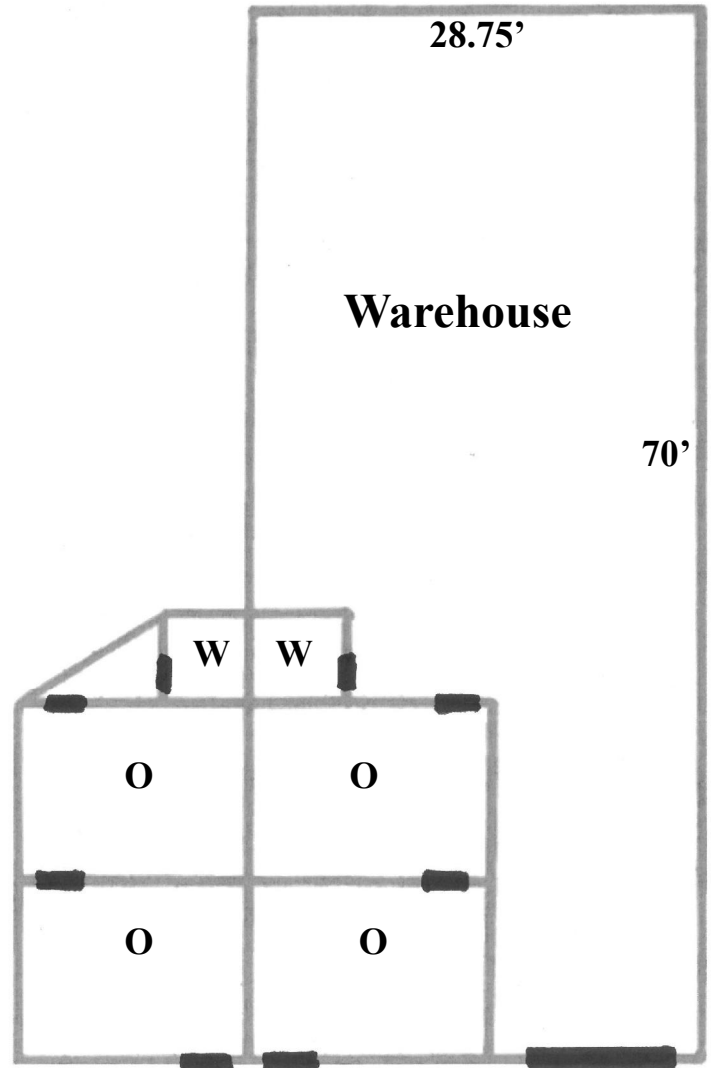
- Located Within City Of Wilmington
- .1 Miles From The Intersection Of Carolina Beach Road And Shipyard Boulevard
- 2/3 Mile From NC Ports
- Available Immediately

## THE OFFERING

**\$4,100/Month**

**Rent Includes Property Taxes,  
Insurance And Common Area  
Maintenance**

**Tenant Pays Utilities**



CREATIVE COMMERCIAL PROPERTIES, INC.

**CALL**

**BRIAN NADEAU**

**(910) 622-6258**

Email: [brian@creativecommercial.biz](mailto:brian@creativecommercial.biz)

[www.creativecommercial.biz](http://www.creativecommercial.biz)



Creative Commercial Properties, Inc. reasonably believes the information in this brochure is fairly and accurately stated. However, any prospective purchaser is urged to independently confirm its accuracy and completeness.