

162-04 Jamaica Avenue, Jamaica, NY

Property Features

- ❖ Immediate availability
- ❖ Long term leases
- ❖ Build-to-suit
- ❖ Passenger elevator
- ❖ Three private ADA restrooms
- ❖ Fantastic signage
- ❖ New lobby renovation
- ❖ **One block to municipal parking**
- ❖ Perimeter windows facing Jamaica Avenue

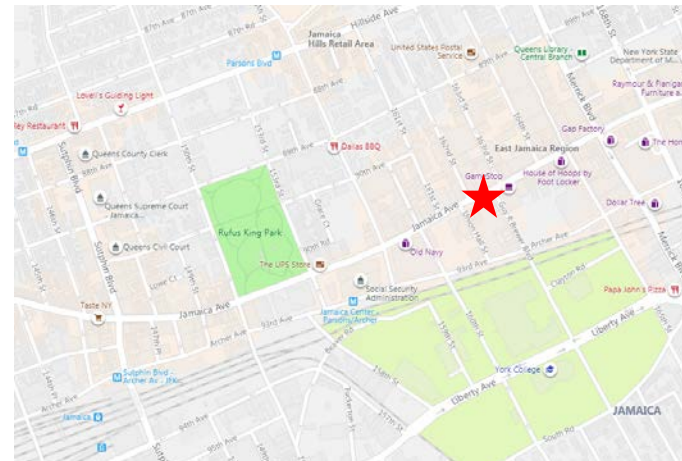
Location

Heavy pedestrian traffic
Easy access to Van Wyck Expressway
and Grand Central Parkway

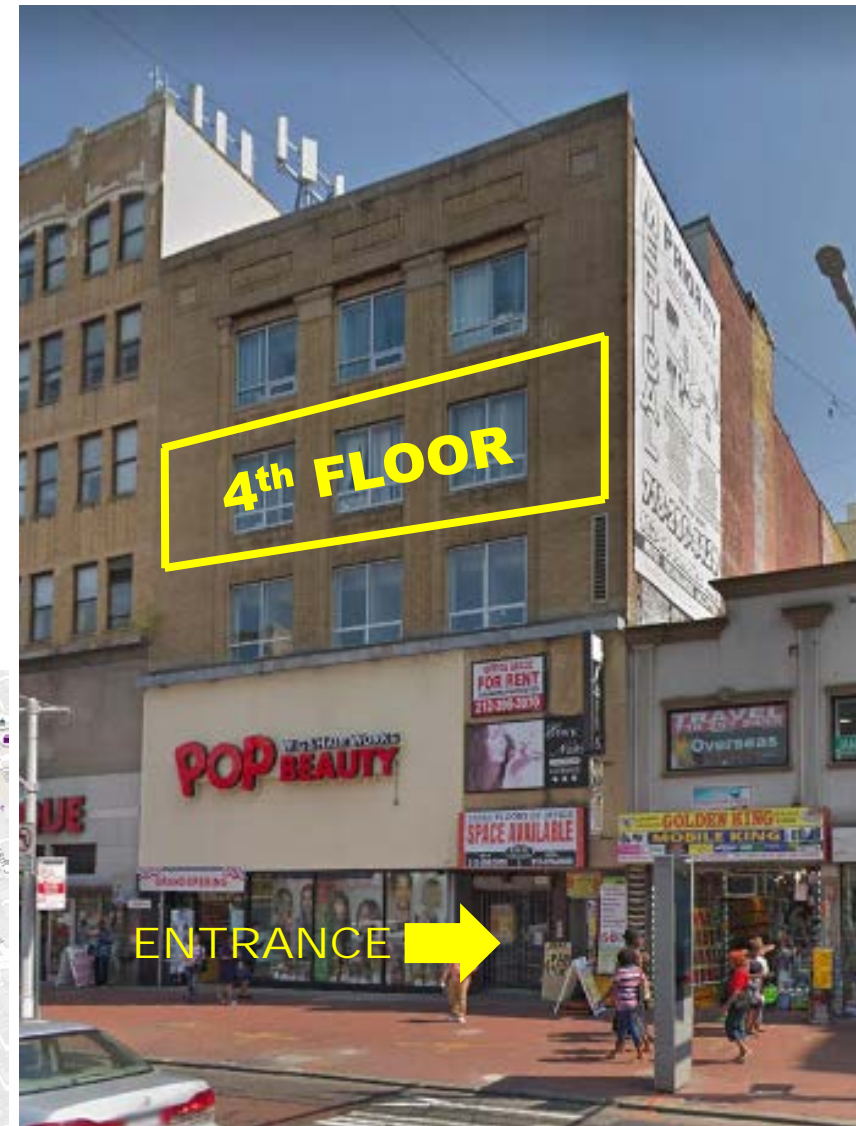
Transportation

Several bus lines at door and near
E J Z subways, LIRR & AirTrain

CALL FOR PRICING



**Full Floor
Opportunity
4,700 Sq. Ft.
4th Floor**
*~ Ideal for General
Office, Non-Profit,
Medical, Use ~*



*For Further Information and Inspection, Please Contact Exclusive Agent:
Melissa Grasso • Salesperson • (718) 371-0127 • mgrasso@s-z.com*

**Kaufman Astoria Studios 35-11 35th Avenue, Long Island City, NY 11106 • (718) 392-5959 • Fax (718) 937-6546
www.s-z.com**