



CORAL CREEK CENTER

AT GENTRY BUSINESS PARK - EWA



Fee Simple Lots For-Sale Industrial Mixed-Use Zoning

Scott L. Mitchell (B), SIOR

Executive Vice President
Land Services Division
Lic# RB-15492
Direct: 808 523 9702
Mobile: 808 223 1564
scott.mitchell@colliers.com

Guy V. Kidder (B), SIOR

Executive Vice President
Land Services Division
Lic# RB-20319
Direct: 808 523 9735
Mobile: 808 754 3337
guy.kidder@colliers.com

220 S. King Street, Suite 1800
Honolulu, Hawaii 96813
808 524 2666
colliers.com

Starting at:
\$85 PSF

Avalon Development is pleased to offer fee simple industrial/commercial zoned lots for sale at Coral Creek Center (CCC) located in Ewa Beach adjacent to the Coral Creek Golf Course. The project will contain 10-lots ranging in size from 15,160 to 110,750 square feet and will be delivered under a condominium property regime (CPR). The remaining 4 Lots can be combined for a maximum contiguous space of 197,779 square feet. The project's IMX-1 zoning allows for a wide variety of industrial, commercial and retail uses and boasts extensive frontage along both Geiger Road and Kamakana Street.

CCC is located adjacent to the established and expanding residential community of Ewa by Gentry with a robust in-place workforce. The University of Hawaii West Oahu campus is a short 4.5 miles away. The Ka Makana Ali'i open-air mall, home to many local, regional and national retailers is less than 2-miles away and offers a wide variety of dining, shopping and entertainment.



Land Services
Division



Copyright © 2025 Colliers International. Information herein has been obtained from sources deemed reliable, however its accuracy cannot be guaranteed. The user is required to conduct their own due diligence and verification.

Property Details



- IMX-1 zoning with expanded uses for industrial, retail, and commercial buyers/users
- Underground utility infrastructure stub-outs to each lot: Hawaiian Electric [HECO] electric, Board of Water Supply [BWS] water, the Department of Environmental Services [ENV] sewer, Hawaiian Telcom and Spectrum communications and fiber optics
- **Build-to-Suit:** For credit worthy occupants, the developer will consider Build-to-Suit to lease, or Build-to-Suit to own on a negotiated cost-plus basis allowing the occupant to focus on running its business, rather than developing. Minimum lease term for a Build-to-Suit to lease is 10-years.

 [Interest Form](#)

 [CoralCreekCenter.com](#)

TMK	(1) 9-1-069:045 (a portion of)
Address	Corner of Geiger Rd and Kamakana St
Zoning	IMX-1, Industrial Mixed Use
Available Sizes	15,160 to 110,750 SF
Lot Assemblage	Up to 197,779 SF
Purchase Price	\$85 - \$95 PSF

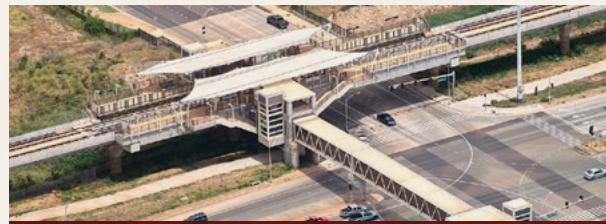
Lot 101	70,428 SF	Sold
Lot 102	53,300 SF	In Escrow
Lot 201	19,811 SF	Sold
Lot 202	19,755 SF	Sold
Lot 203	15,160 SF	In Escrow
Lot 204	110,750 SF	In Escrow
Lot 205	26,252 SF	\$2,231,420
Lot 301	53,717 SF	\$5,103,115
Lot 302	53,910 SF	\$5,121,450
Lot 303	63,900 SF	\$6,070,500
Four Lot Assemblage	197,779 SF	\$18,526,485

Location Highlights

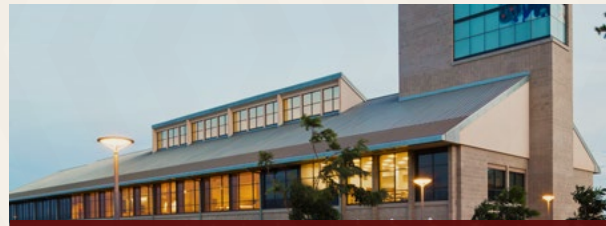
- Located next to the Coral Creek Golf Course
- Direct access to Kalaeloa master planned community, new Daniel K. Akaka VA Clinic, and the City of Kapolei
- 4 miles to Interstate H-1 via Geiger Rd, Kapolei Parkway, and Kualakakai Parkway
- 3.5 miles to Keono'ae HART Rail Station
- 3.4 miles to Kalaeloa Airport (JRF)
- 7.5 miles to Kalaeloa Barbers Point Harbor
- 2 miles to Ka Makana Ali'i
- 4.5 miles to University of Hawai'i West Oahu



Coral Ridge by Gentry



Keone'ae Rail Station



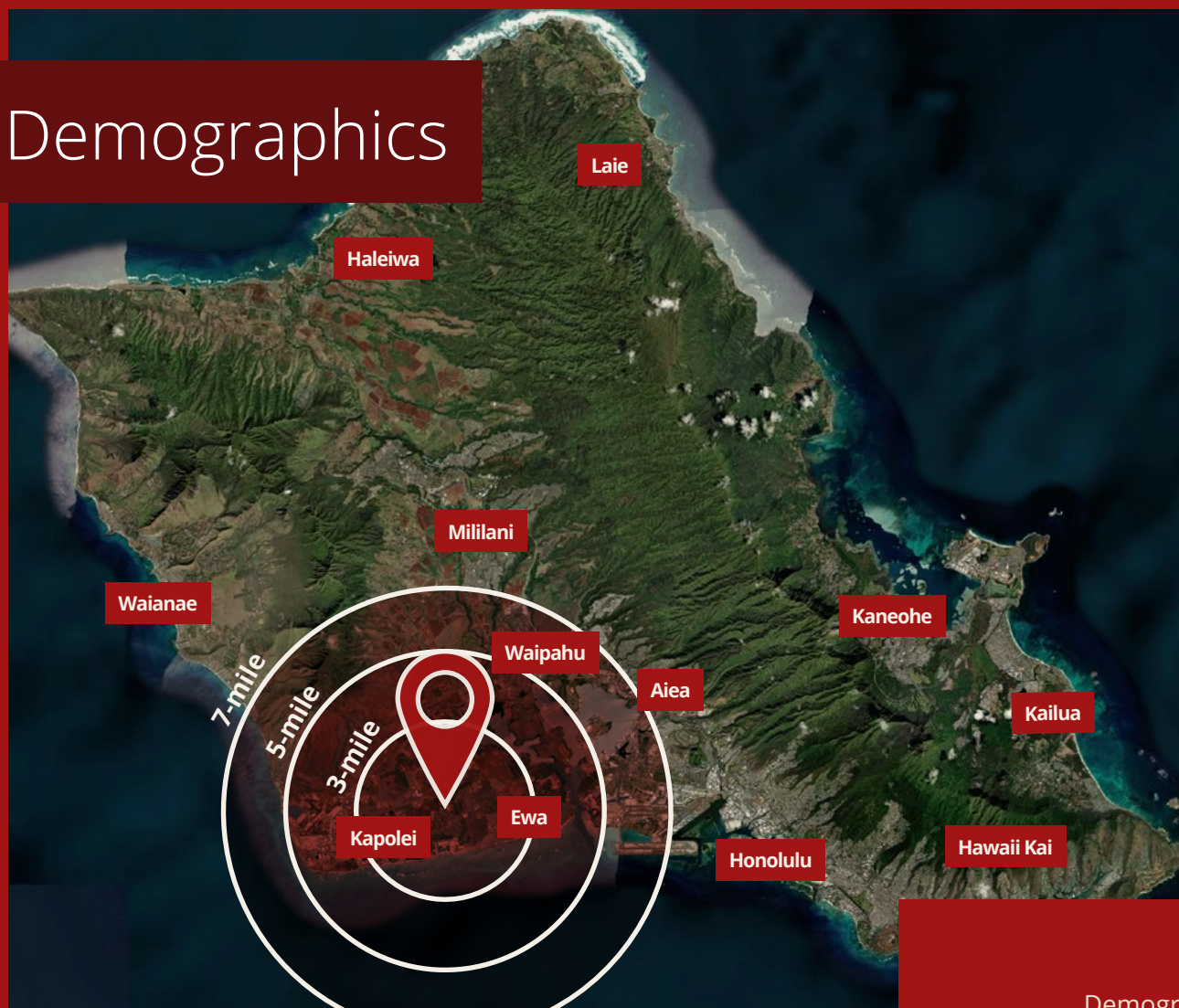
University of Hawai'i - West O'ahu



Ka Makana Ali'i



Demographics



Demographics at a Glance

Daytime Population (7-mile)

207,151



Household Families (7-mile)

54,405



Median Age (7-mile)

34.8



Bachelor's Degree + (7-mile)

21.9%



Contact Us



Scott L. Mitchell (B), SIOR

Executive Vice President
Lic# RB-15492
Direct: 808 523 9702
Mobile: 808 223 1564
scott.mitchell@colliers.com



Guy V. Kidder (B), SIOR

Executive Vice President
Lic# RB-20319
Direct: 808 523 9735
Mobile: 808 754 3337
guy.kidder@colliers.com



Land Services
Division

This document/email has been prepared by Colliers for advertising and general information only. Colliers makes no guarantees, representations or warranties of any kind, expressed or implied, regarding the information including, but not limited to, warranties of content, accuracy and reliability. Any interested party should undertake their own inquiries as to the accuracy of the information. Colliers excludes unequivocally all inferred or implied terms, conditions and warranties arising out of this document and excludes all liability for loss and damages arising there from. This publication is the copyrighted property of Colliers and /or its licensor(s). © 2024. All rights reserved. This communication is not intended to cause or induce breach of an existing listing agreement.