

# HIGH - VISIBILITY RETAIL SPACE IN THE HEART OF DOWNTOWN ASHEVILLE



6  
EAGLE STREET

ASHEVILLE, NC

RETAIL LEASE

1,048 SF  
\$25/SF NNN

JASON BURK | CCIM  
COMMERCIAL BROKER  
C: 828.674.2120  
JBURK@WHITNEYCRE.COM

All information herein obtained from sources deemed reliable but not guaranteed, and may change or be updated without notice.

# Surrounded by restaurants & retailers

RETAIL SPACE FOR LEASE LOCATED IN THE HEART OF DOWNTOWN ON THE CORNER OF BILTMORE AVENUE AND EAGLE STREET.

PREVIOUSLY USED BY CRAFTED EDGE - HIGH END KITCHEN RETAILER.

SURROUNDED BY SOUGHT-AFTER RESTAURANTS AND RETAILERS. CONVENIENTLY SITUATED IN AN AREA

SURROUNDED BY EXCELLENT PARKING. POSITIONED IN A POPULAR TOURIST AREA WITH HEAVY FOOT TRAFFIC,

THIS SPACE HAS LARGE STORE-FRONT WINDOWS WITH ENDLESS POSSIBILITIES.

## FEATURES

- Inviting retail space
- Large windows
- Open layout

## LOCATION DESCRIPTION

- Located in the heart of downtown Asheville
- Walkable to Pack Square
- Multiple parking garages and street parking
- In close proximity to popular restaurants and retailers



6 EAGLE STREET - FOR LEASE | WHITNEY COMMERCIAL REAL ESTATE

All information herein obtained from sources deemed reliable but not guaranteed, and may change or be updated without notice.

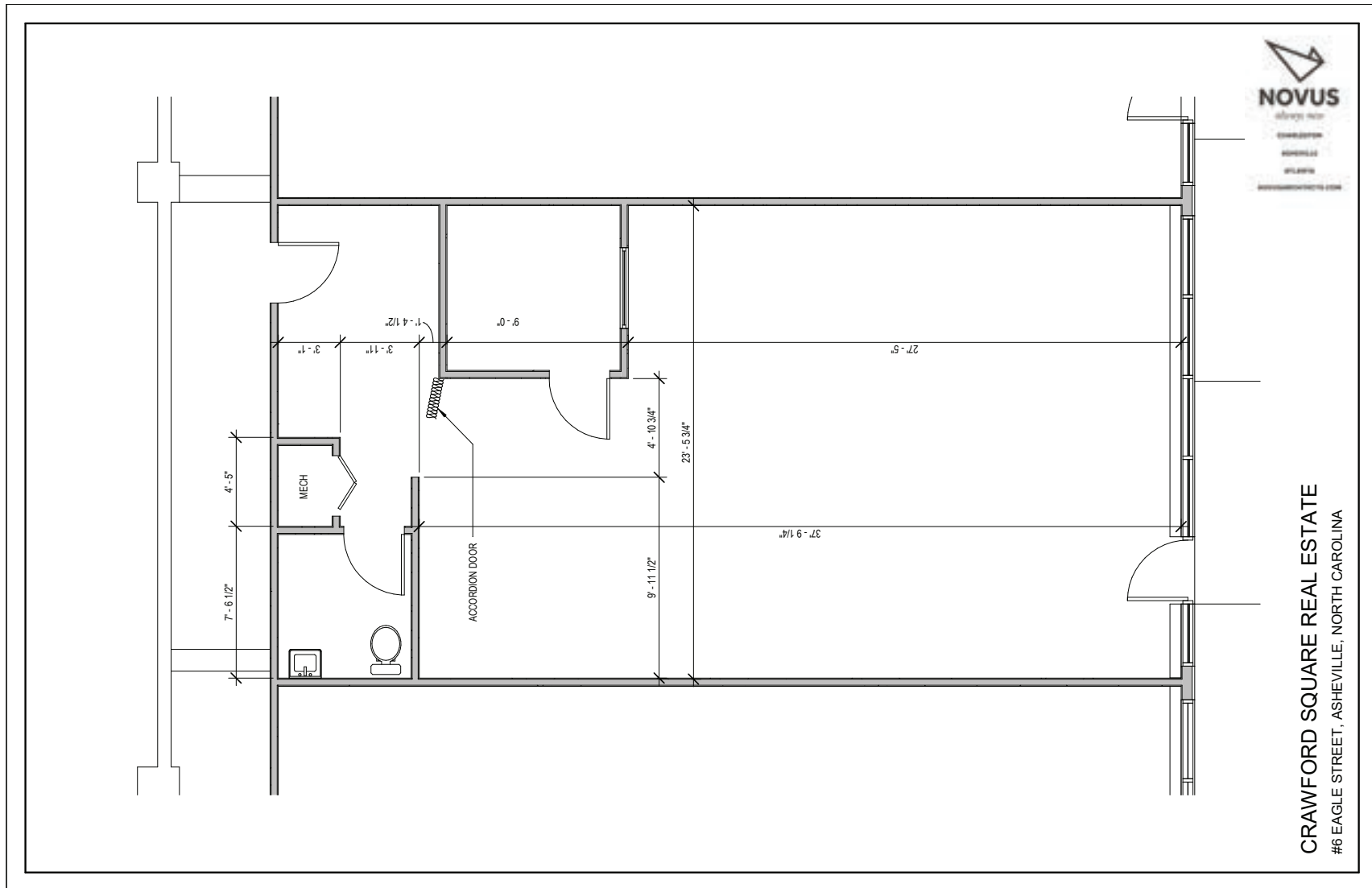




6 EAGLE STREET - FOR LEASE | WHITNEY COMMERCIAL REAL ESTATE

# FLOOR PLAN

JASON BURK, CCIM  
C: 828.674.2120



6 EAGLE STREET - FOR LEASE | WHITNEY COMMERCIAL REAL ESTATE

All information herein obtained from sources deemed reliable but not guaranteed, and may change or be updated without notice.

# AREA LANDMARKS

JASON BURK, CCIM  
C: 828.674.2120



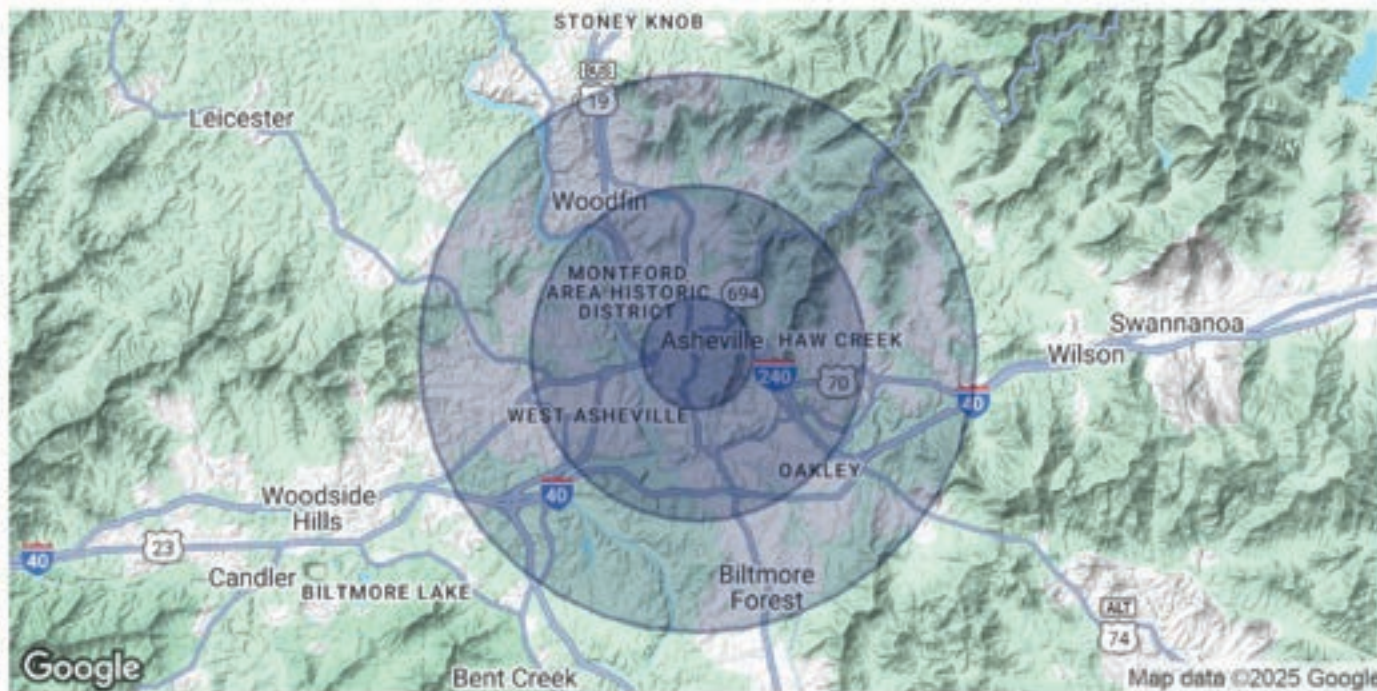
6 EAGLE STREET - FOR LEASE | WHITNEY COMMERCIAL REAL ESTATE

All information herein obtained from sources deemed reliable but not guaranteed, and may change or be updated without notice.



# DEMOGRAPHICS MAP & REPORT

JASON BURK, CCIM  
C: 828.674.2120



POPULATION	1 MILE	3 MILES	5 MILES
Total Population	8,873	48,336	95,409
Average Age	40	41	41
Average Age (Male)	40	40	40
Average Age (Female)	40	42	42
HOUSEHOLDS & INCOME	1 MILE	3 MILES	5 MILES
Total Households	4,353	22,368	42,011
# of Persons per HH	1.9	2.2	2.2
Average HH Income	\$39,280	\$50,608	\$50,695
Average House Value	\$238,022	\$297,937	\$277,433

2020 American Community Survey (ACS)

6 EAGLE STREET - FOR LEASE | WHITNEY COMMERCIAL REAL ESTATE

All information herein obtained from sources deemed reliable but not guaranteed, and may change or be updated without notice.

# TRANSACTION BROKER

jason burk

Commercial Real Estate Broker  
828.674.2120  
jburk@whitneycre.com



Jason Burk, CCIM is a seasoned commercial real estate professional with over two decades of experience. Since entering the industry in 1999, he's gained a diverse skill set spanning both development and brokerage. Specializing in retail, Jason excels in tenant and landlord representation, site location, shopping center investment sales, restaurant and medical leasing, and land transactions. He also offers expertise in industrial and office transactions when needed.

Jason's real estate journey began at Landex, Inc. in Charlotte, NC, where he worked on a project anchored by Concord Mills Mall. He later joined Alliance Development Group, focusing on single-tenant restaurant projects. In 2009, his work in Asheville shifted to the sale, leasing, and disposition of distressed assets with Whitney Commercial Real Estate. By 2014, Jason became part of the executive team at Biltmore Farms, serving as Director of Leasing, overseeing more than 1.6 million square feet of retail and office space. His role also included strategic planning for 3,000 acres of company holdings, including the renowned Biltmore Park Town Square—an award-winning mixed-use development.

Jason returned to Whitney Commercial Real Estate in 2019 to build the only dedicated retail team in Western North Carolina with Eric Engstrom. In 2024, Jason proudly celebrated 12 years with Whitney.

Originally from South Carolina, Jason, along with his wife, Hope, and children, Laila and Jack Wesley, relocated to Black Mountain in 2009. Outside of work, he enjoys spending quality time with his family—whether backpacking, fishing, or boating. Jason holds a degree in Real Estate and Urban Analysis from Appalachian State University and is a proud recipient of the prestigious CCIM.

## TRANSACTION HIGHLIGHTS:

AFC URGENT CARE	OREILLY'S
ALAN'S PAWN	PAPA'S & BEER
ALG SENIOR LIVING	PNC BANK
APRICOT LANE	POPEYE'S
BACKYARD BURGER	PROGRESSIVE INSURANCE
BEVERLY HANKS MTGE	RANGE URGENT CARE
BILTMORE PROPERTY GRP	REGAL THEATER
CLEAN JUICE	REICH, LLC
CLUB PILATES	REALTY INCOME-REIT
EARTHFARE	RBC CAPITAL MARKETS
FJALLRAVEN	SASSAFRAS
FRESH MARKET	SAW SOFTMILL
GREAT CLIPS	STANTON OPTICAL
HYDRATE MEDICAL	STARBUCK'S
ICI CHARTER SCHOOL	SUBWAY
KMART	TD BANK
LENSCRAFTERS	UNC SCHOOL OF MEDICINE
LUELLA'S BBQ	UPM RAFLATEC
MADISON CAPITAL GROUP	WICKER CAPITAL
MATTRESS WAREHOUSE	WNC OUTDOOR COLLECTIVE
MISSION HOSPITAL	WALGREENS
MOORE FOOT & ANKLE	UPM RAFLATEC
NORVELL PROPERTIES	