

FOR LEASE

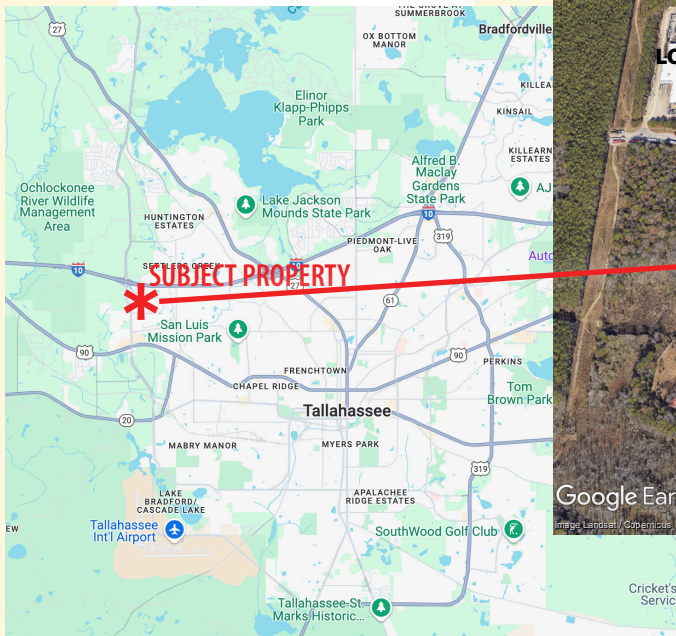
THE **WILLIAMS** GROUP
commercial real estate services

5,000 - 70,000 SQ FT - Light Industrial Under Development For Lease on 10 Acre Site

Commonwealth Blvd, 2 blocks from Capital Circle NW at I-10, Tallahassee, FL

- >> Parcel ID: 211930 B0010
- >> 3 buildings being developed: 25,000 SF, 25,000 SF, and 20,000 SF with 24 ft eave
- >> Anticipated delivery: 3rd quarter 2025
- >> .25 miles to I-10 (exit 196) via Capital Circle NW (truck route)
6.6 miles from downtown Tallahassee and State Capitol
6.5 miles to Tallahassee International Airport

>> **Lease rates starting at \$15 SF NNN**



For more information contact :
Johanna W Money

PO Box 2068 Tallahassee, FL 32316 // p 850.545.1674 // f 850.224.1790 // johanna@williamsgroupcre.com

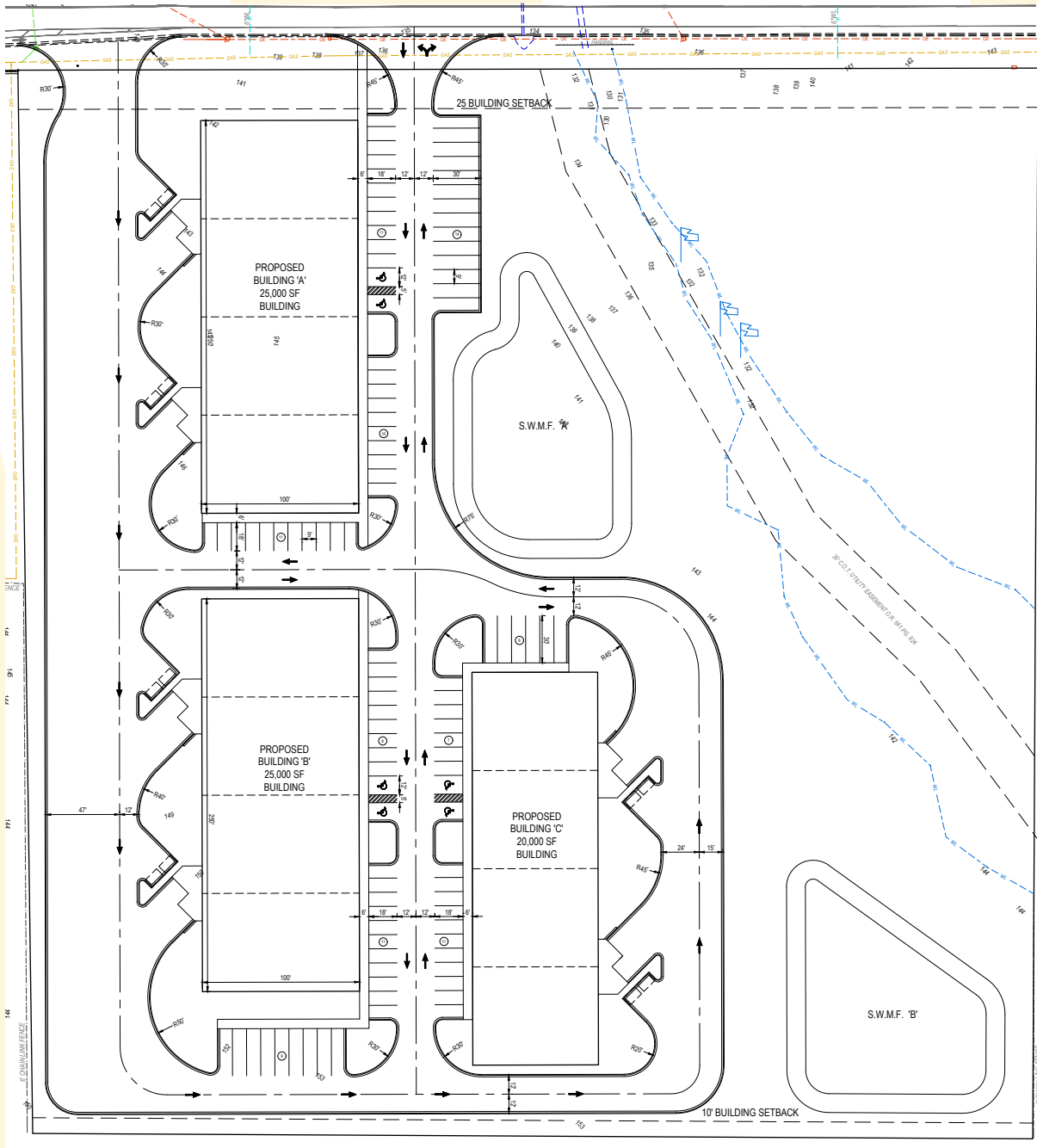
All information contained in this document is deemed reliable but not guaranteed. All properties are subject to prior sale, change or withdrawal notice. The Williams Group believes all information to be correct but assumes no legal responsibility for accuracy.

850.545.1674
www.WilliamsGroupCRE.com

FOR LEASE

THE **WILLIAMS** GROUP
commercial real estate services

:::SITE PLAN:::



For more information contact :
Johanna W Money

PO Box 2068 Tallahassee, FL 32316 // p 850.545.1674 // f 850.224.1790 // johanna@williamsgrupcre.com

All information contained in this document is deemed reliable but not guaranteed. All properties are subject to prior sale, change or withdrawal notice. The Williams Group believes all information to be correct but assumes no legal responsibility for accuracy.

850.545.1674
www.WilliamsGroupCRE.com



FOR LEASE

THE **WILLIAMS** GROUP
commercial real estate services

:::Location:::



For more information contact :
Johanna W Money

PO Box 2068 Tallahassee, FL 32316 // p 850.545.1674 // f 850.224.1790 // johanna@williamsgroupcre.com

All information contained in this document is deemed reliable but not guaranteed. All properties are subject to prior sale, change or withdrawal notice. The Williams Group believes all information to be correct but assumes no legal responsibility for accuracy.

850.545.1674
www.WilliamsGroupCRE.com