

ECHO BRIDGE OFFICE PARK

**375 - 395 ELLIOT STREET
NEWTON UPPER FALLS, MA**



**Attractive &
unique
office setting ,
in a
prime location**



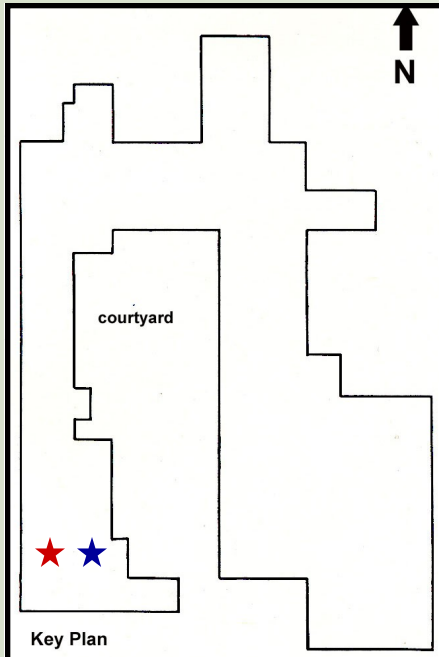
This renovated historic mill building is strategically located in the southeast corner of the intersection of Rte. 9 and Rte. 128 (I-95), overlooking the Charles River, by the Newton/Wellesley town line. It offers attractive office space in a prime location at reasonable rates.



Echo Bridge Office Park, Newton Upper Falls, MA



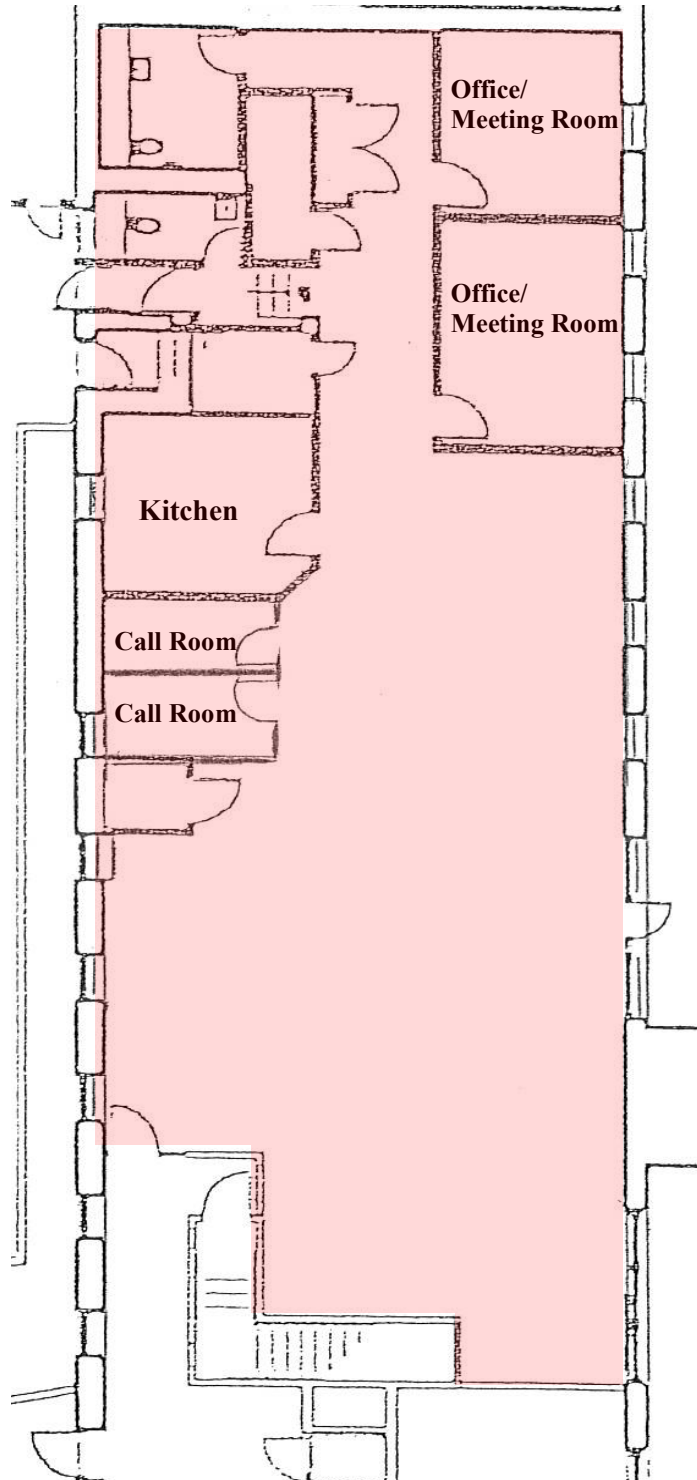
- Office Park Overlooks Charles River
- Centrally Located
- Locally based Landlord with 35 years experience, that offers quality customer service.
- Unique office setting that makes for a pleasant working environment.
- Abundant parking
- Quick and easy access to Rte. 128 & the Mass Pike



For more information:
781-235-4300
www.haynesmanagement.com



Echo Bridge Office Park 2,963 SF - First Floor Charles River Views



For more information:
781-235-4300
www.haynesmanagement.com