



0.33 Acres Next to CVS

4280 Mitt Lary Road Northport, AL 35475



FOR SALE

Property Highlights

- 0.33 acre lot adjacent to CVS available
- Available immediately
- Located at busy intersection of US HWY 43 & Mitt Lary Road
- Call for more information



ACRES
0.33



TRAFFIC
16,371



ACCESS
Highway

Demographics	3 mile	5 mile	10 mile
Population	16,325	35,771	71,373
Households	6,074	13,661	27,001
Daytime Pop	8,915	22,213	59,569
Med HH Income	\$97,904	\$90,151	\$84,010

Joe Strauss, CCIM jstrauss@retailspecialists.com 205.393.3215

Walker Reich walker@retailspecialists.com 205.441.9981

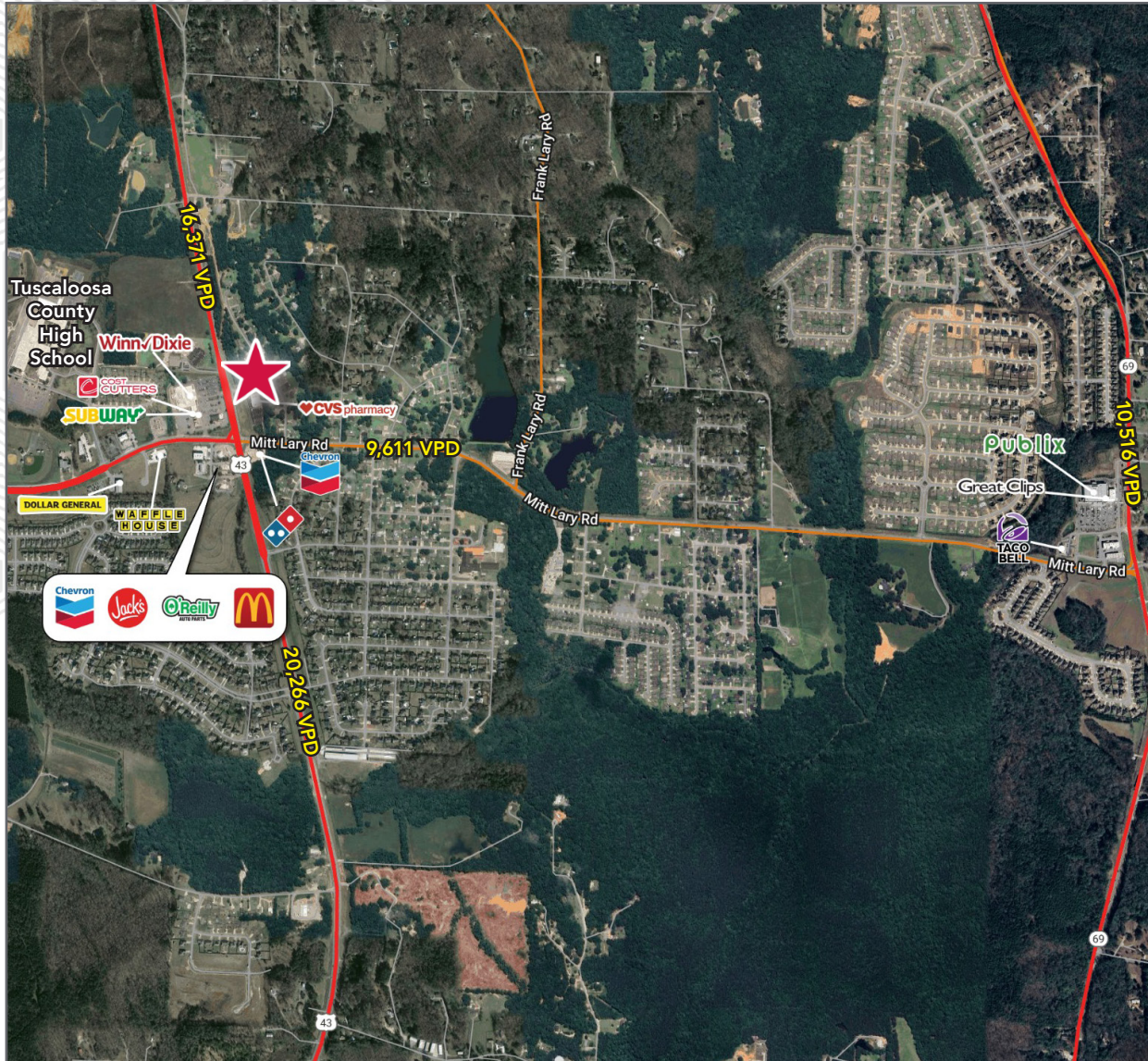


retail specialists

0.33 Acres Next to CVS

4280 Mitt Lary Road Northport, AL 35475

Market Aerial



FOR SALE

Joe Strauss, CCIM jstrauss@retailspecialists.com 205.393.3215

Walker Reich walker@retailspecialists.com 205.441.9981