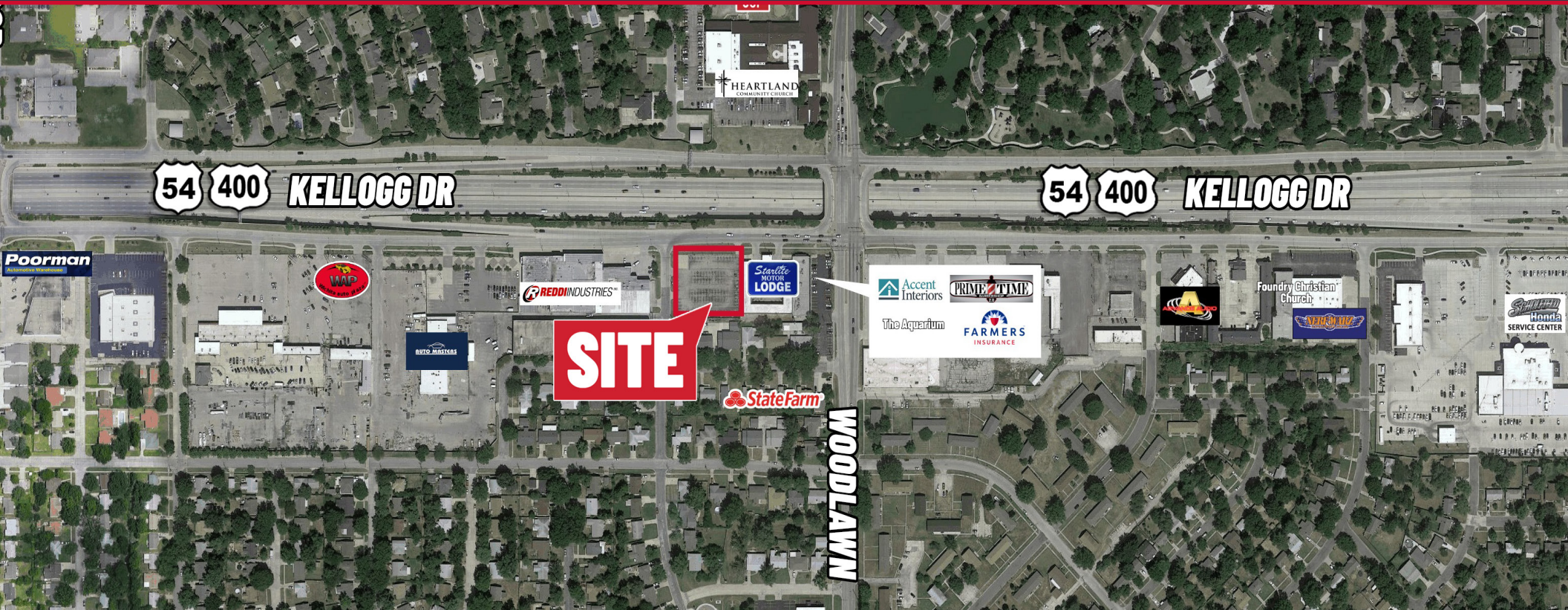


EAST KELLOGG LAND

6315 E. Kellogg Dr. | Wichita, KS
LEASE RATE \$2,000.00/Mo.



SITE SIZE
35,446 SF (0.81 A)

ZONING
LIMITED COMMERCIAL




UTILITIES
AVAILABLE TO SITE

2023 TAXES
GENERAL \$6,465.96 SPECIALS \$42.64

PROPERTY HIGHLIGHTS

- Completely paved lot available for lease.
- Located near the corner of Kellogg and Woodlawn.
- Short-term or long-term ground lease available.

DEMOGRAPHICS 1 MILE 3 MILES 5 MILES

	POPULATION	11,975	90,149	189,379
	AVG. HH INCOME	\$81,300	\$78,523	\$72,529
	MEDIAN AGE	34.4	34.6	34.2

TRAFFIC COUNTS
APPROX. 45,269 VPD AT KELLOGG AND WOODLAWN

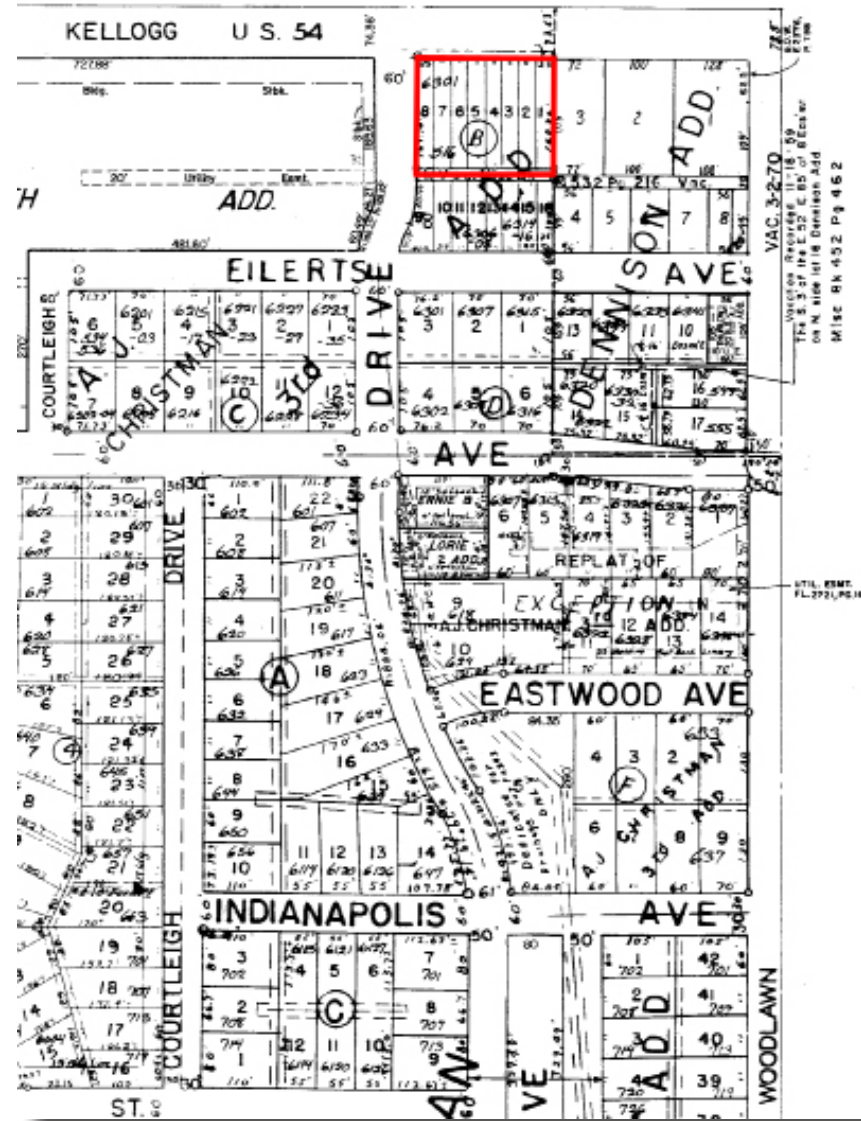


Offered by: **Grant Tidemann, SIOR** | 316-292-3908 | tidemann@weigand.com

EAST KELLOGG LAND

6315 E. Kellogg Dr. | Wichita, KS
LEASE RATE \$2,000.00/Mo.

PLAT



All information furnished regarding property for sale, lease, exchange or financing is from sources deemed reliable but no guarantee is made or responsibility assumed as to its accuracy or completeness and you are advised to make your own analysis and verification. Broker hereby notifies prospective buyer/lessee that (a) Broker will be acting as an agent of seller/lessor with the duty to represent seller/lessor's interest; (b) Broker will not be the agent of buyer/lessee; and (c) Information given to Broker will be disclosed to seller/lessor.



Offered by: **Grant Tidemann, SIOR** | 316-292-3908 | tidemann@weigand.com

EAST KELLOGG LAND

6315 E. Kellogg Dr. | Wichita, KS
LEASE RATE \$2,000.00/Mo.

UTILITY MAP



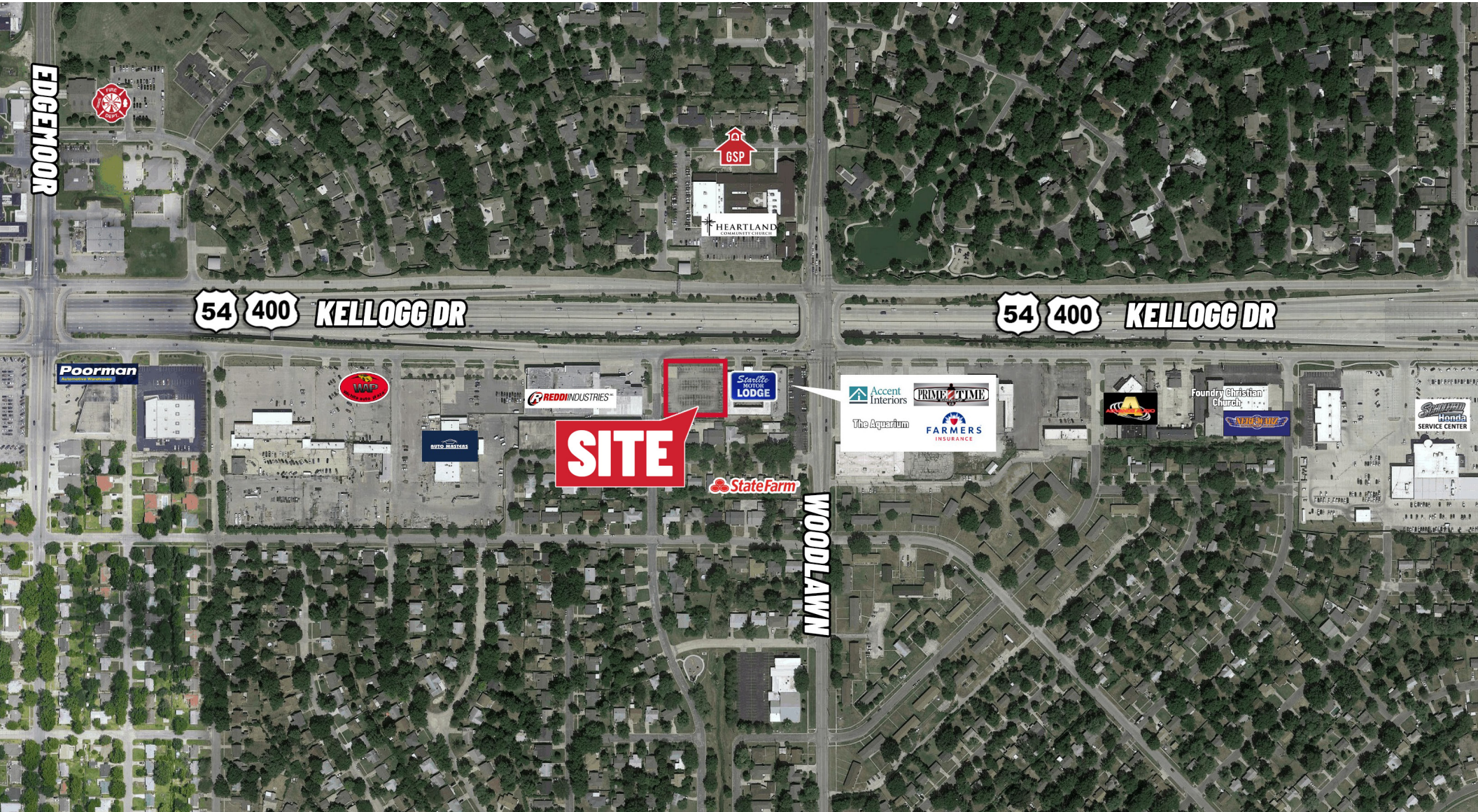
All information furnished regarding property for sale, lease, exchange or financing is from sources deemed reliable but no guarantee is made or responsibility assumed as to its accuracy or completeness and you are advised to make your own analysis and verification. Broker hereby notifies prospective buyer/lessee that (a) Broker will be acting as an agent of seller/lessor with the duty to represent seller/lessor's interest; (b) Broker will not be the agent of buyer/lessee; and (c) Information given to Broker will be disclosed to seller/lessor.



Offered by: **Grant Tidemann, SIOR** | 316-292-3908 | tidemann@weigand.com

EAST KELLOGG LAND

6315 E. Kellogg Dr. | Wichita, KS
LEASE RATE \$2,000.00/Mo.



All information furnished regarding property for sale, lease, exchange or financing is from sources deemed reliable but no guarantee is made or responsibility assumed as to its accuracy or completeness and you are advised to make your own analysis and verification. Broker hereby notifies prospective buyer/lessee that (a) Broker will be acting as an agent of seller/lessor with the duty to represent seller/lessor's interest; (b) Broker will not be the agent of buyer/lessee; and (c) Information given to Broker will be disclosed to seller/lessor.



Offered by: **Grant Tidemann, SIOR** | 316-292-3908 | tidemann@weigand.com

J.P. Weigand & Sons, Inc. Commercial Division | 150 N. Market Wichita, KS 67202 | WeigandCommercial.com